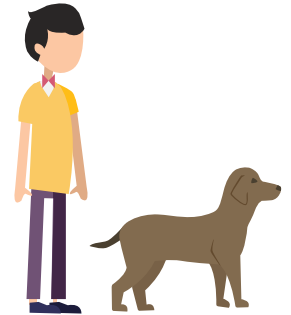
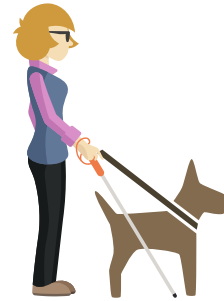




Service Animals in Food Establishments

Service animals are **dogs** that are **individually trained** to work or perform tasks for people with disabilities.



- A properly trained service animal is not a pet. **Service animals are working animals.**
- Dogs whose sole function is to provide **comfort or emotional support** **do not qualify as service animals** under Title II and III of the Americans with Disabilities Act.
- **Service animals must be under control.** The animal must be harnessed, leashed, or tethered, unless these devices interfere with the service animal's work or the individual's disability prevents using these devices.
- Other species of animals, whether trained or untrained, are not considered service animals.
- Service animals are not to be fed as part of the dining experience.



It is unlawful for a person to fraudulently represent an animal as a service animal (NRS 426.805)

Service animals are not allowed in grocery carts or on seats/tables.

(Reg 6-501.20(c))



Americans with Disabilities Act (ADA) requirements regarding service animals are available at www.ADA.gov.