



Southern Nevada Health District Weekly Influenza Surveillance Snapshot

MMWR WEEK 9 (03/01/2026 - 03/07/2026)

2025–2026 Season

SNHD Office of Epidemiology

Influenza surveillance for Clark County, Nevada includes data collected from local acute care hospitals and other healthcare providers. In Clark County, as of March 7, 2026, for the 2025–2026 influenza season, 1,016 influenza-associated hospitalizations were reported. Currently, there have been 30 deaths associated with influenza reported for the season. The percentage of emergency room (ER) and urgent care clinic visits for influenza-like illness (ILI), defined as fever (temperature of 100°F [37.8°C] or greater) and a cough and/or a sore throat, decreased from 3.2% in week 8 to 2.8% in week 9. Influenza A has been the predominant influenza type detected among hospitalized cases within Clark County. During week 9, 3.7% of outpatient visits nationally reported through the U.S. Outpatient Influenza-like Illness Surveillance Network (ILINet) were due to respiratory illness that included ILI. This percentage is above the national baseline of 3.1%. The current respiratory illness activity level in the state of Nevada is low. The Southern Nevada Health District (SNHD) will continue to update the public on the progression of the influenza season and encourage influenza vaccination for all persons 6 months of age and older without contraindications.



Table 1: Influenza Report by Age Group — Clark County, NV (CDC Week 40, 2025 to Week 9, 2026)

Age Group	Hospitalized	Hospitalized Deaths	Non-Hospitalized Deaths	Confirmed Cases
0-4	53	0	0	53
5-17	72	0	0	72
18-24	50	0	0	50
25-49	166	1	0	166
50-64	176	4	2	178
65+	499	19	4	503
Total	1,016	24	6	1,022

Data source: SNHD EpiTrax Warehouse

Note: This report does not include cases diagnosed by Rapid Influenza Diagnostic Test without hospitalization.

The total number of confirmed influenza cases is calculated as the sum of hospitalizations and deaths without prior hospitalizations.

Table 2: Influenza Report by Virus Strain — Clark County, NV (CDC Week 40, 2025 to Week 9, 2026)

Influenza Type	Hospitalized	Deaths	Confirmed Cases
Influenza A (2009 H1N1)	27	5	30
Influenza A (RIDT)	160	4	160
Influenza A (not sub-typed)	633	15	634
Influenza A (seasonal H3)	77	3	79
Influenza B (RIDT)	77	2	77
Influenza B (non-RIDT)	44	1	44
Total	1,018	30	1,024

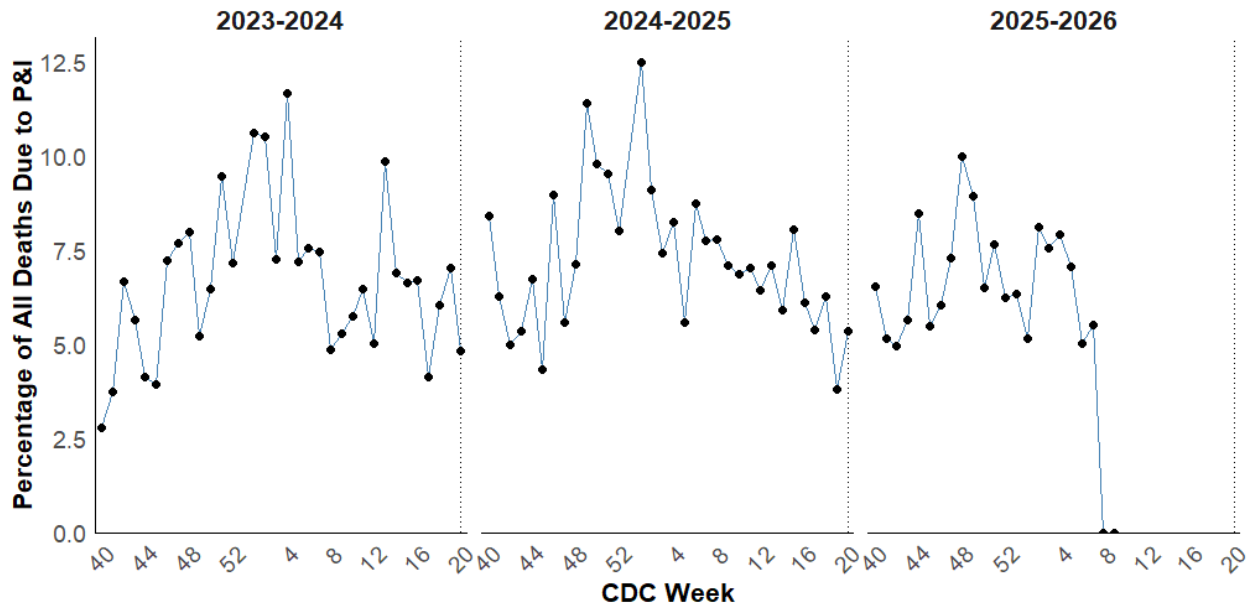
Data source: SNHD EpiTrax Warehouse

Confirmed Cases are defined as cases that meet laboratory criteria AND resulted in hospitalizations (>24 hours) or deaths.

In rare instances where both Influenza A and B were detected for the same individual, the case is counted under both virus types.

Totals therefore represent laboratory detections rather than unique persons.

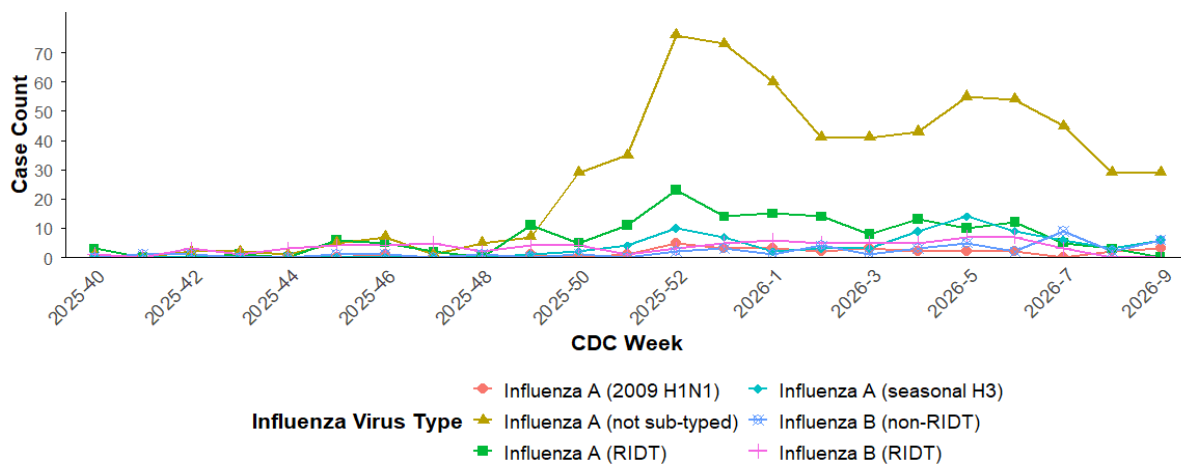
Figure 1: Percentage of Clark County Deaths Registered with Pneumonia and/or Influenza (P&I) by Week for Three Prior Influenza Seasons



Data Source: Clark County Electronic Death Registry System

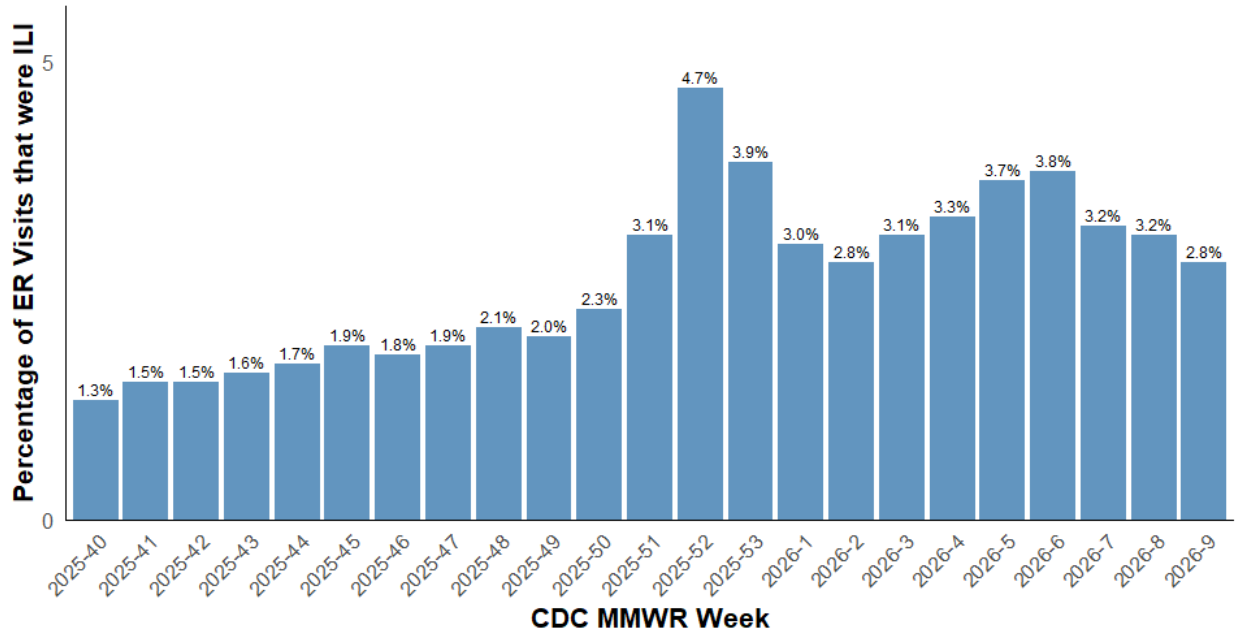
*Please note that due to a delay in receiving ICD codes for existing death records in the current season, the data in the image above may not reflect the true number of deaths attributed to pneumonia and/or influenza.

Figure 2: Distribution of Influenza Cases by Virus Strain — Clark County, NV (CDC Week 40, 2025 to Week 9, 2026)



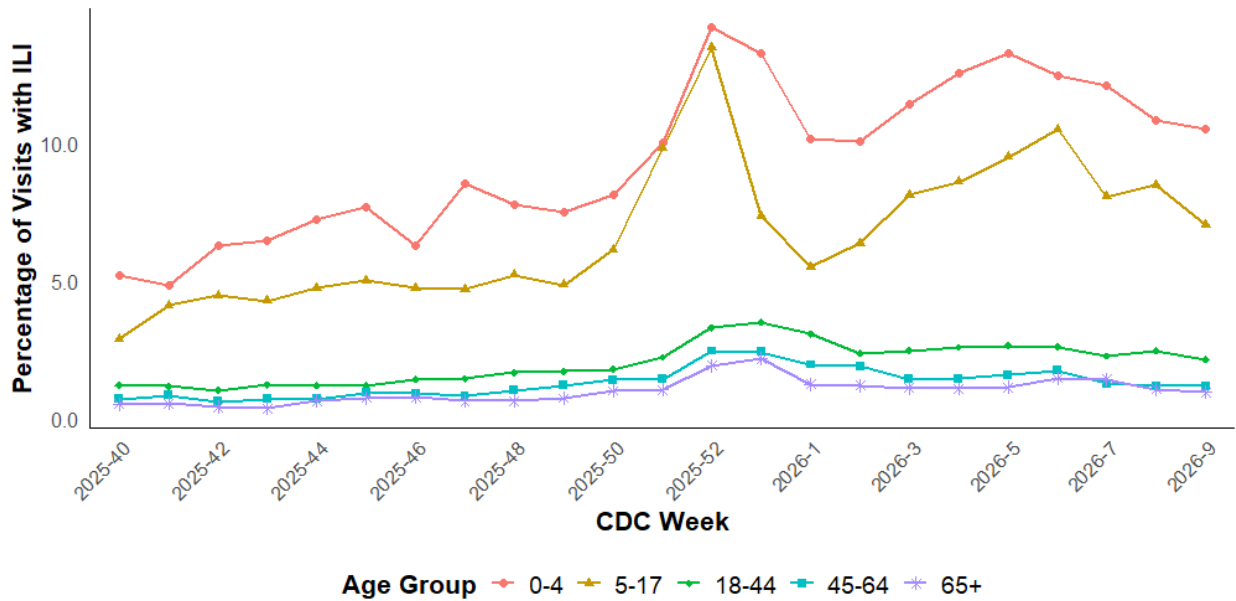
Data Source: SNHD EpiTrax Warehouse
 *Counts represent laboratory detections rather than unique persons
 Shown through MMWR week 9 (2026)

Figure 3: Weekly Proportion of Emergency Room and Urgent Care Visits for Influenza-Like Illness (ILI), Clark County, NV (CDC Week 40, 2025 to Week 9, 2026)



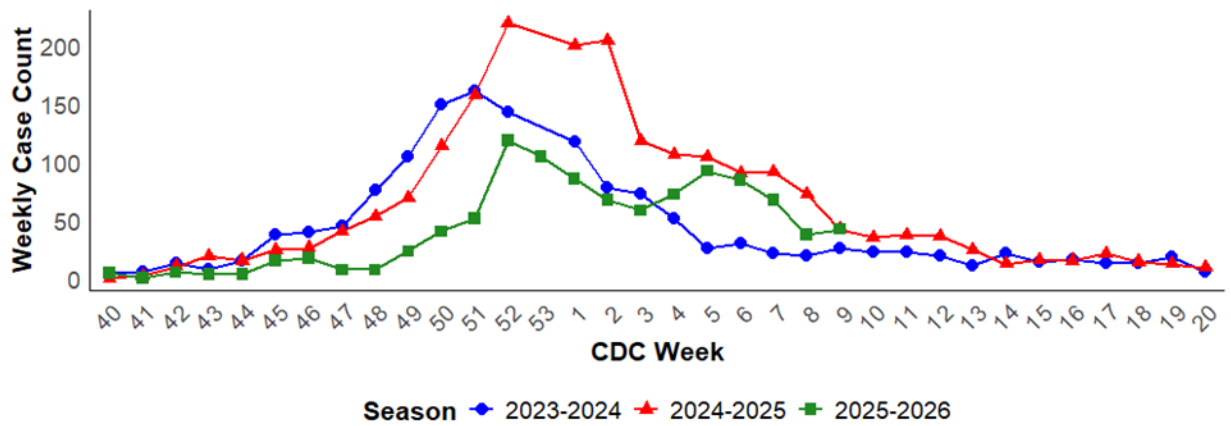
Data Source: Centers for Disease Control and Prevention. National Syndromic Surveillance Program. *ESSENCE*

Figure 4: Age Distribution of Emergency Room and Urgent Care Clinic Visits for Influenza-Like Illness (ILI), Clark County, NV (CDC Week 40, 2025 to Week 9, 2026)



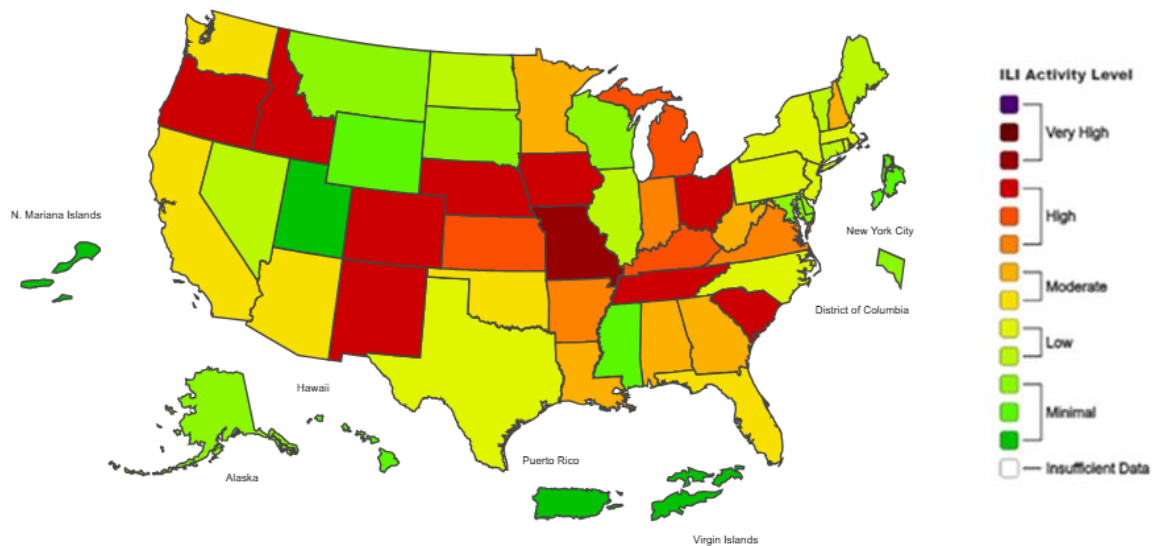
Data Source: Centers for Disease Control and Prevention. National Syndromic Surveillance Program. *ESSENCE*

Figure 5: Confirmed Influenza Cases with Hospitalization or Death — Clark County, NV, for the Last Three Influenza Seasons



Data Source: SNHD EpiTrax Warehouse
 Confirmed Cases include lab-confirmed cases with hospitalization (>24h) or death.
 Weeks with no reported hospitalized or fatal influenza cases at time of reporting are not shown.
 Total Confirmed Cases (Week 40–Week 9):
 1259 (2023–2024)
 1796 (2024–2025)
 1022 (2025–2026)

Figure 6: National Outpatient Respiratory Illness Activity Level — 2025–2026 Influenza Season, CDC Week 9 ending March 7, 2026



Data Source: Centers for Disease Control and Prevention, *FluView*



Additional Notes:

Confirmed Cases = Laboratory confirmed by PCR, culture, immunofluorescent antibody staining (direct or indirect), IHC antigen staining, rapid influenza diagnostic tests (RIDTs) with hospitalizations for 24 hours or longer, or with deaths. This weekly report is only a reflection of the hospitalized cases and deaths reported for the current influenza season (Table 1 and Table 2). The number of total confirmed cases in Figure 5 includes number of hospitalizations, deaths with hospitalizations and deaths without hospitalizations.

Note: The total number of confirmed cases presented in this report is subject to changes due to possible delays in reporting and processing. For additional information regarding SNHD influenza surveillance, please visit us at <http://southernnevadahealthdistrict.org/stats-reports/influenza-surveillance.php>.

Prepared by the Office of Epidemiology, Southern Nevada Health District