



Southern Nevada Health District Weekly Influenza Surveillance Snapshot

MMWR WEEK 52 2025–2026 Season

SNHD Office of Epidemiology

Influenza surveillance for Clark County, Nevada includes data collected from local acute care hospitals and other healthcare providers. In Clark County, as of December 27, 2025, for the 2025–2026 influenza season, 276 influenza-associated hospitalizations were reported. Currently, there has been two deaths associated with influenza reported for the season. The percentage of emergency room (ER) and urgent care clinic visits for influenza-like illness [ILI is defined as fever (temperature of 100°F [37.8°C] or greater) and a cough and/or a sore throat] increased from 3.1% in week 51 to 4.7% in week 52. Currently, Influenza A has been the predominant Influenza Type detected among hospitalized cases within Clark County. During week 52, 8.2% of outpatient patient visits nationally reported through the U.S. Outpatient Influenza-like Illness Surveillance Network (ILINet) were due to respiratory illness that included ILI. This percentage is above the national baseline of 3.1% for the fourth consecutive week. Due to potential reporting delays, the current respiratory illness activity level in the state of Nevada is unknown. The Southern Nevada Health District (SNHD) will continue to update the public on the progression of the influenza season and encourage influenza vaccination for all persons 6 months of age and older without contraindications.

Table 1: Influenza Report by Age Group — Clark County, NV (CDC Week 40, 2025 to Week 52, 2025)

Age Group	Hospitalized	Hospitalized Deaths	Non-Hospitalized Deaths	Confirmed Cases
0-4	12	0	0	12
05-17	21	0	0	21
18-24	17	0	0	17
25-49	40	0	0	40
50-64	42	0	1	43
65+	143	1	0	143
Total	275	1	1	276

Data source: SNHD EpiTrax Warehouse

Note: This report does not include cases diagnosed by Rapid Influenza Diagnostic Test without hospitalization.

The total number of confirmed influenza cases is determined by taking the sum of hospitalizations and Deaths W/O hospitalization history.

Table 2: Influenza Report by Virus Strain — Clark County, NV (CDC Week 40, 2025 to Week 52, 2025)

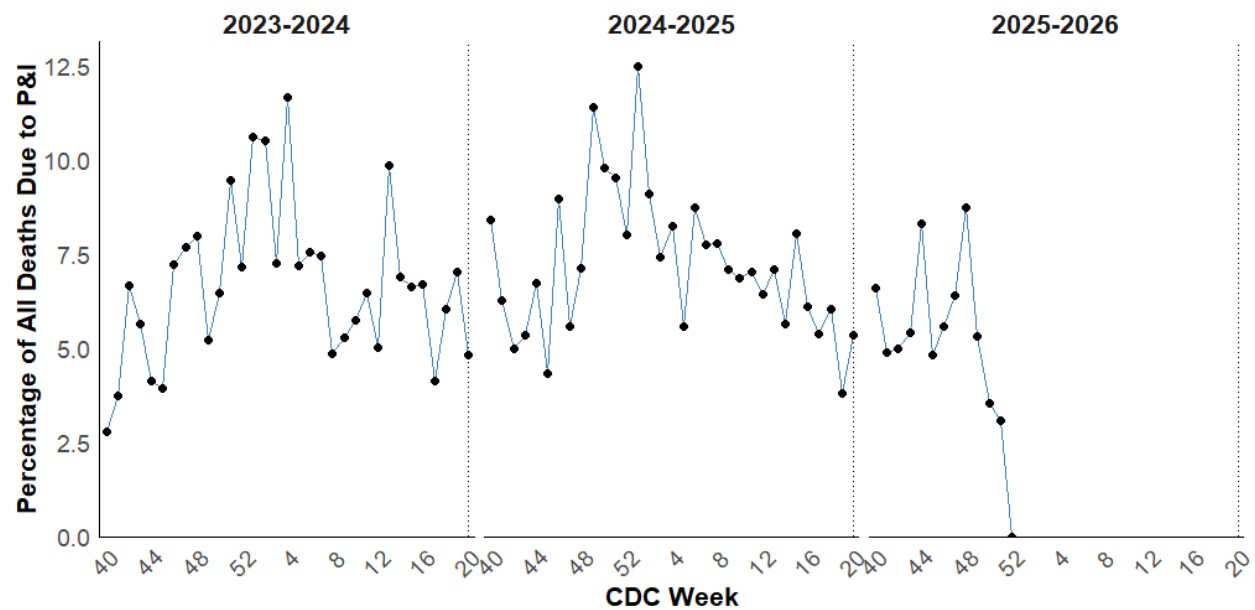
Influenza Type	Hospitalized	Deaths	Confirmed Cases
Influenza A (2009 H1N1)	7	1	8
Influenza A (RIDT)	56	1	56
Influenza A (not sub-typed)	161	0	161
Influenza A (seasonal H3)	13	0	13
Influenza B (RIDT)	31	0	31
Influenza B (non-RIDT)	7	0	7
Total	275	2	276

Data source: SNHD EpiTrax Warehouse

Confirmed Cases are defined as a case that meets laboratory criteria AND had a hospitalization (>24 hours) or has died.

In rare instances where both Influenza A and B were detected for the same individual, the case is counted under both virus types. Totals therefore represent laboratory detections rather than unique persons.

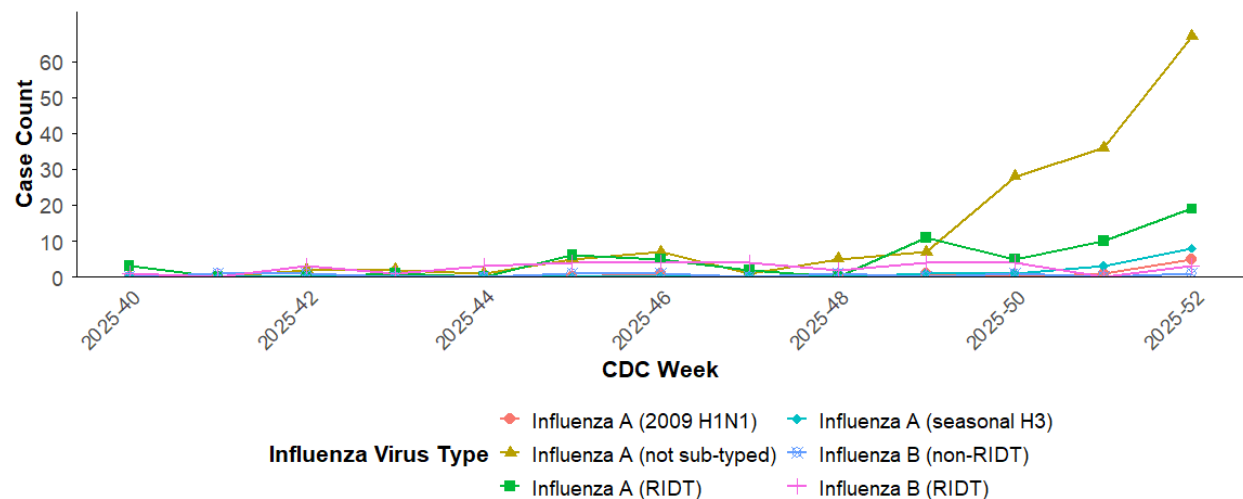
Figure 1: Percentage of Clark County Deaths Registered with Pneumonia and/or Influenza (P&I) by Week for Three Prior Influenza Seasons



Data Source: Clark County Electronic Death Registry System

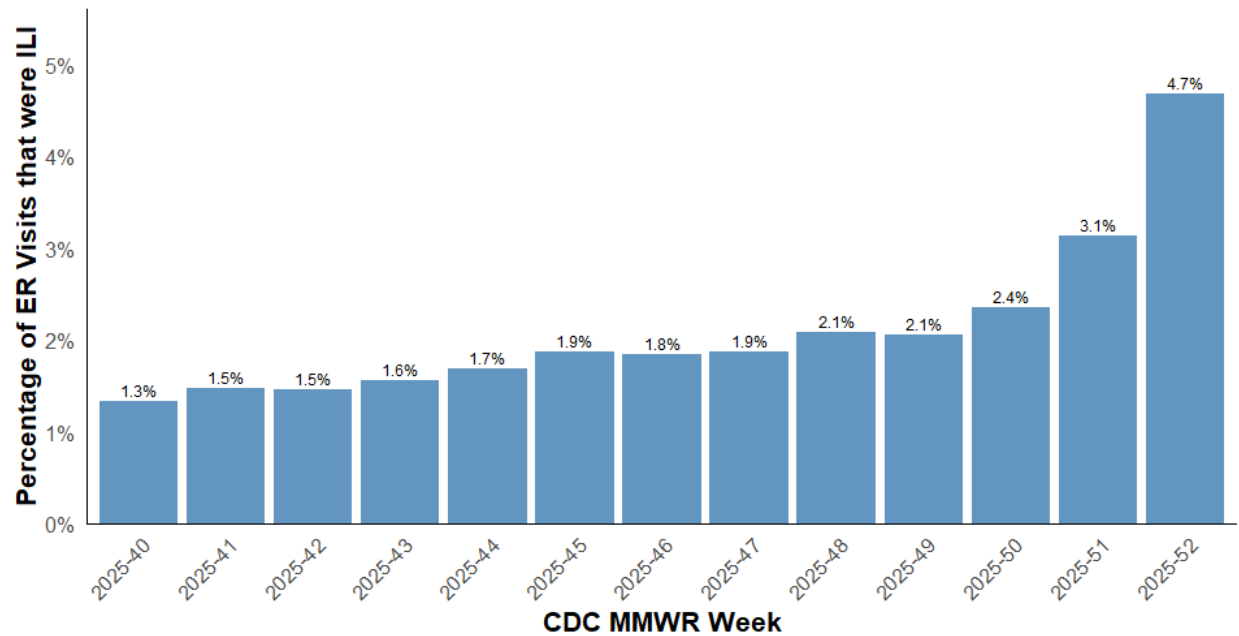
*Please note that due to a delay in receiving ICD codes for existing death records in the current season, the data reflected in the image above may not correspond to the true number of deaths attributed to Pneumonia and or Influenza.

Figure 2: Distribution of Influenza Cases by Virus Strain — Clark County, NV (CDC Week 40, 2025 to Week 52, 2025)



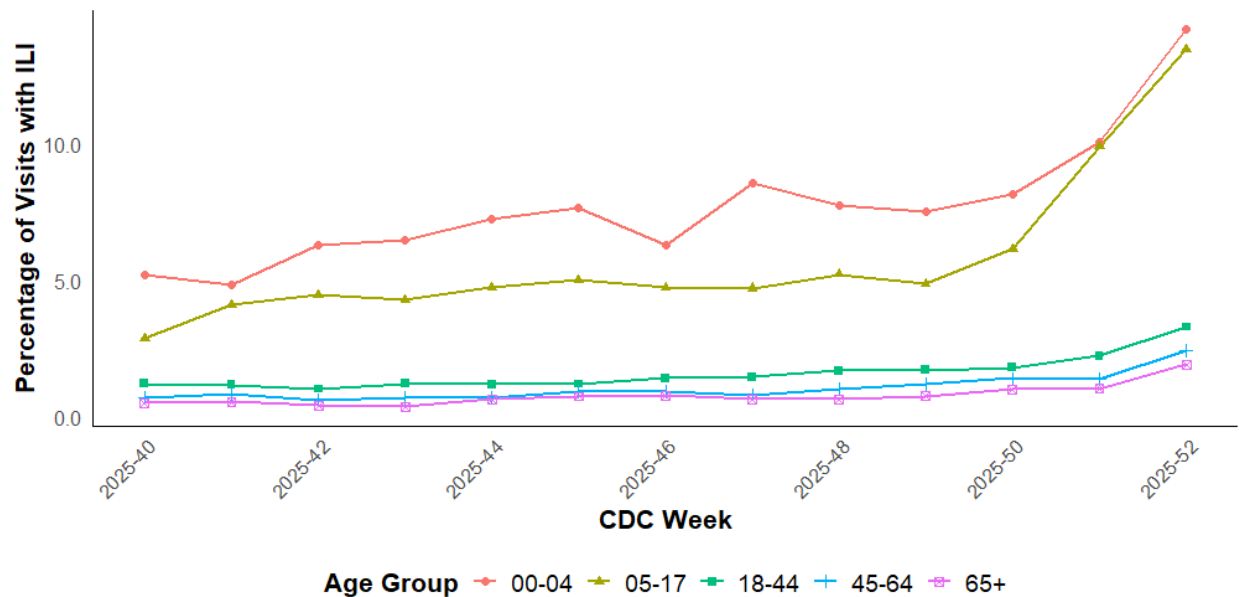
Data Source: SNHD EpiTrax Warehouse
 *Counts represent laboratory detections rather than unique persons
 Shown through MMWR week 52 (2025)

Figure 3: Weekly Proportion of Emergency Room and Urgent Care Visits for Influenza-Like Illness (ILI), Clark County, NV (CDC Week 40, 2025 to Week 52, 2025)



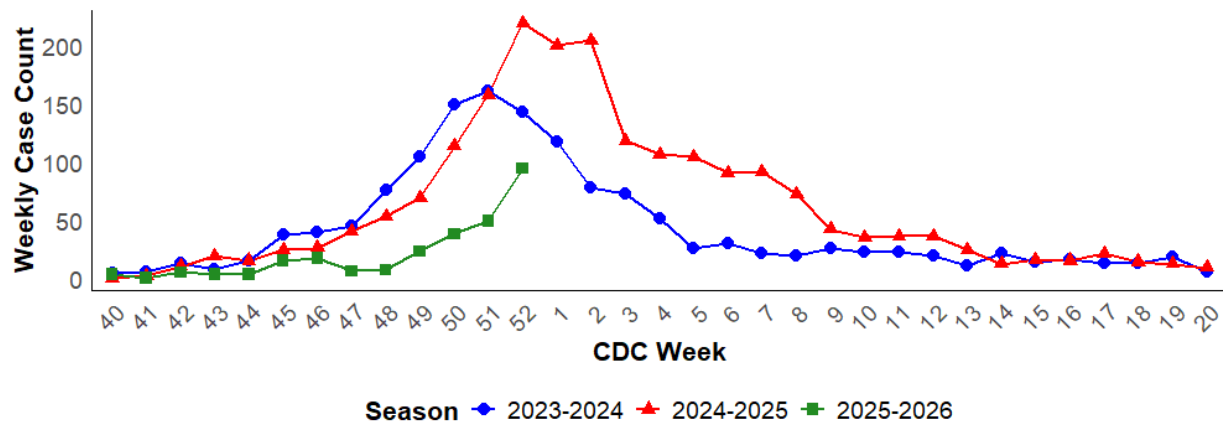
Data Source: Centers for Disease Control and Prevention. National Syndromic Surveillance Program. *ESSENCE*

Figure 4: Age Distribution of Emergency Room and Urgent Care Clinic Visits for Influenza-Like Illness (ILI), Clark County, NV (CDC Week 40, 2025 to Week 52, 2025)



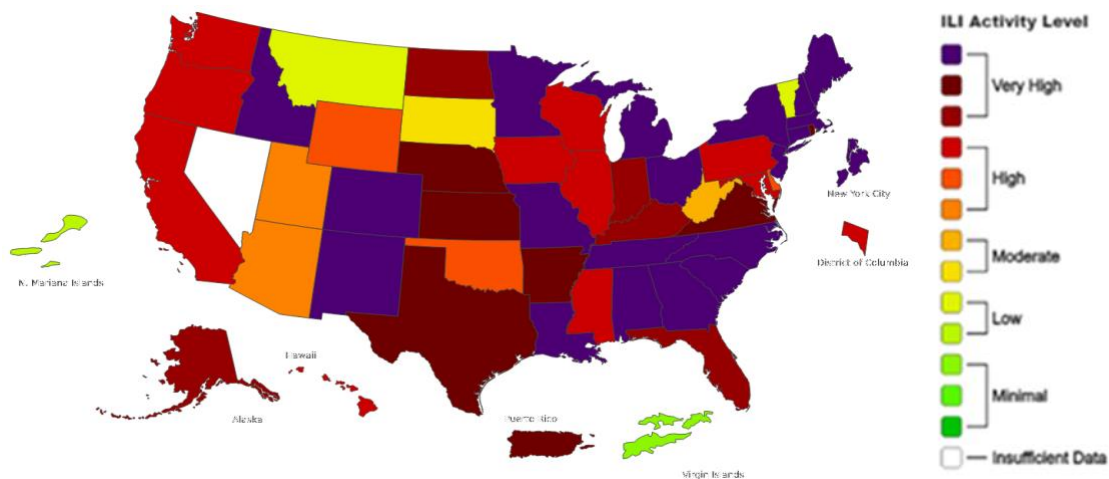
Data Source: Centers for Disease Control and Prevention. National Syndromic Surveillance Program. *ESSENCE*

Figure 5: Confirmed Influenza Cases With Hospitalization or Death — Clark County, NV, for the Last Three Influenza Seasons



Data Source: SNHD EpiTrax Warehouse
 Confirmed Cases include lab-confirmed cases with hospitalization (>24h) or death.
 Weeks with no reported hospitalized or fatal influenza cases at time of reporting are not shown.
 Total Confirmed Cases(Week 40–52):
 810 (2023–2024)
 760 (2024–2025)
 276 (2025–2026)

Figure 6: National Outpatient Respiratory Illness Activity Level — 2025–2026 Influenza Season, CDC Week 52 ending December 27, 2025



Date Source: Centers for Disease Control and Prevention, *FluView*

***Please Note:** The insufficient data for Nevada reflects potential reporting delays to the CDC for the current week.

Additional Notes:

Confirmed Cases = Laboratory confirmed by PCR, culture, immunofluorescent antibody staining (direct or indirect), IHC antigen staining, rapid influenza diagnostic tests (RIDTs) with hospitalizations for 24 hours or longer, or with deaths. This weekly report is only a reflection of the hospitalized cases and deaths reported for the current influenza season (Table 1 and Table 2). The number of total confirmed cases in Figure 5 includes number of hospitalizations, deaths with hospitalizations and deaths without hospitalizations.

Note: The total number of confirmed cases presented in this report is subject to changes due to possible delays in reporting and processing. For additional information regarding SNHD influenza surveillance, please visit us at <http://southernnevadahealthdistrict.org/stats-reports/influenza-surveillance.php>.

Prepared by the Office of Epidemiology, Southern Nevada Health District