



Southern Nevada Weekly Influenza Surveillance Snapshot CDC Week 4, Jan 19, 2025, to Jan 25, 2025

Summary:

Influenza surveillance for Clark County, Nevada includes data collected from local acute care hospitals and other healthcare providers. In Clark County, as of 01/25/2025, for the 2024 - 2025 influenza season, 1,135 influenza-associated hospitalizations were reported. Currently there have been 40 deaths associated with influenza reported for the season. The percentage of emergency room (ER) and urgent care clinic visits for influenza-like illness [ILI (fever plus cough or sore throat)] decreased from 6.9% during week 3 to 6.0% in week 4. Currently, Influenza A has been the predominant strain detected within the region. During week 4, 6.9% of outpatient patient visits nationally reported through the U.S. Outpatient Influenza-like Illness Surveillance Network (ILINet) were due to respiratory illness that included ILI. This percentage exceeds the national baseline of 3.0%. Among 55 states/jurisdictions, the respiratory illness activity level in the state of Nevada is high. The Southern Nevada Health District (SNHD) will continue to update the public on the progression of the influenza season and encourage influenza vaccination for all persons 6 months of age and older without contraindications.

Table 1: Influenza Report by Age Group, Clark County, NV (CDC Week 40, 2024 to Week 4, 2025)

Age Group	Deaths	Hospitalized
0-4	0	78
05-17	0	60
18-24	0	26
25-49	2	166
50-64	8	205
65+	30	600
Total Cases	40	1135

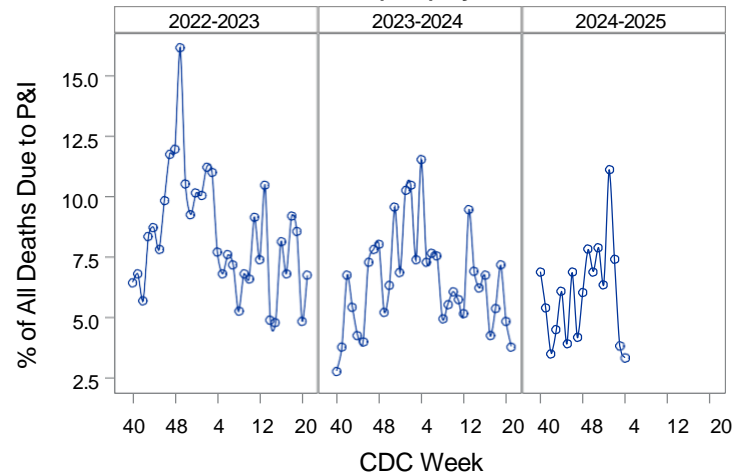
Source: SNHD EpiTrax Warehouse

Table 2: Influenza Report by Virus Strain, Clark County, NV (CDC Week 40, 2024 to Week 4, 2025)

Influenza Type	Deaths	Hospitalized
A (2009 H1N1)	2	53
A (RIDT)	0	72
A (not sub-typed)	24	903
A (seasonal H3)	14	76
B (RIDT)	0	12
B (non-RIDT)	0	17
Influenza (unknown type, RIDT)	0	2
Total Cases	40	1135

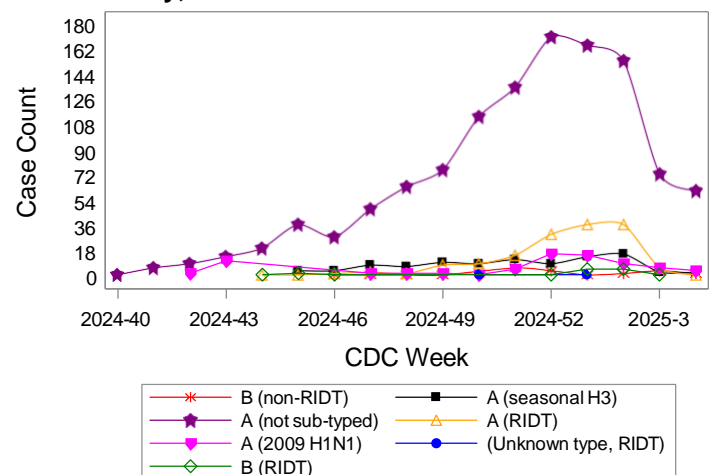
Source: SNHD EpiTrax Warehouse

Figure 1: Percent of Clark County Deaths Registered with Pneumonia and/or Influenza (P&I) by Week



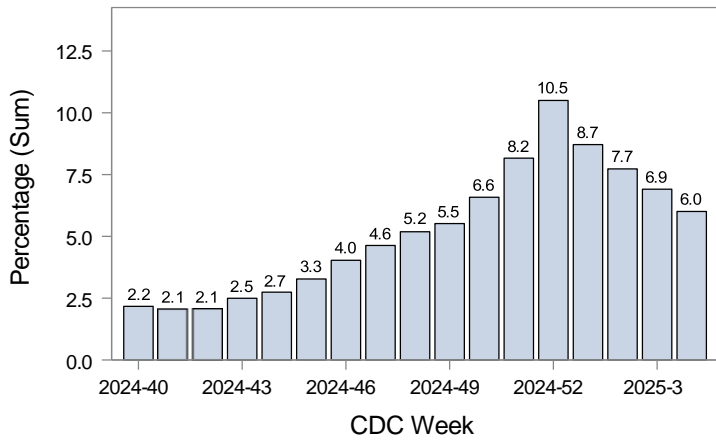
Source: Clark County Electronic Death Registry System

Figure 2: Distribution of Confirmed Cases* by Virus Strain, Clark County, NV



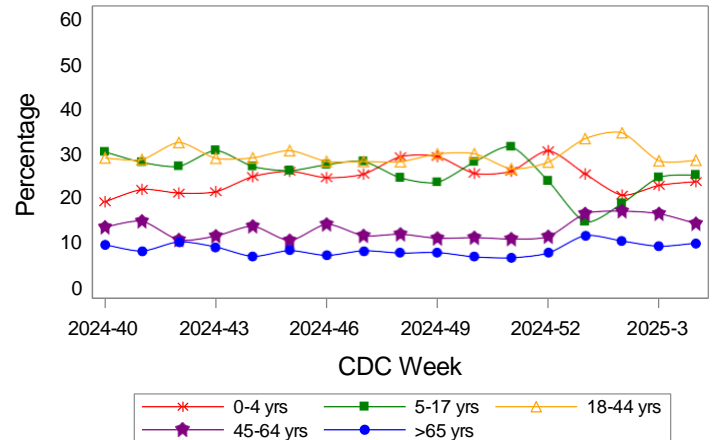
Source: SNHD EpiTrax Warehouse

Figure 3: Weekly Proportion of Emergency Room and Urgent Care Clinic Visits for Influenza-Like Illness, Clark County, NV



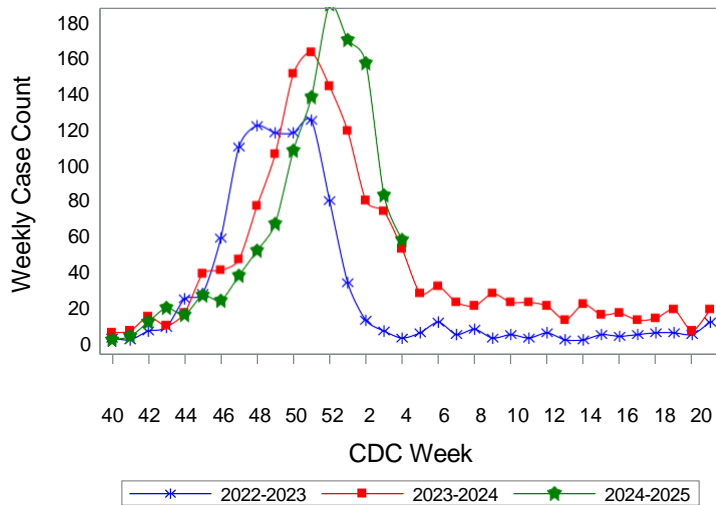
Source: Centers for Disease Control and Prevention. National Syndromic Surveillance Program. ESSENCE

Figure 4: Age Distribution of Emergency Room and Urgent Care Clinic Visits for Influenza-Like Illness, Clark County, NV



Source: Centers for Disease Control and Prevention. National Syndromic Surveillance Program. ESSENCE

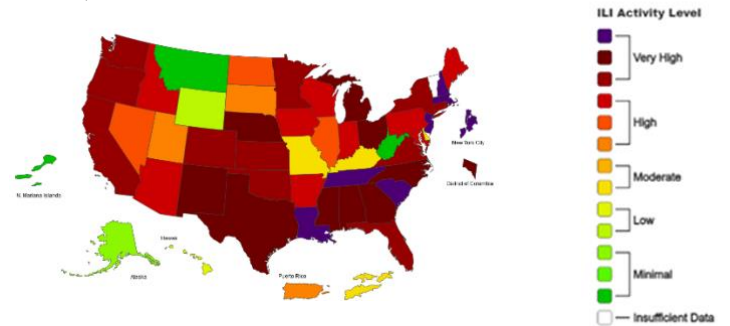
Figure 5: Seasonal Trends of Confirmed Cases* of Influenza, Clark County, NV



Total Confirmed Cases*(Week 40 - 4):
 846(2022-2023) 1132(2023-2024) 1148(2024-2025)

Source: SNHD EpiTrax Warehouse

Figure 6: National Outpatient Respiratory Illness Activity Level- 2024-2025 Influenza Season CDC Week 4 ending Jan 25, 2025



Source: Centers for Disease Control and Prevention: FluView

*Confirmed Cases= Laboratory confirmed by PCR, culture, immunofluorescent antibody staining (direct or indirect), IHC antigen staining, rapid influenza diagnostic tests (RIDTs) with hospitalizations for 24 hours or longer, or with deaths. This weekly report is only a reflection of the hospitalized cases and deaths reported for the current influenza season (Table 1 and Table 2). The number of total confirmed cases in Figure 5 includes number of hospitalizations, deaths with hospitalizations and deaths without hospitalizations.

Note: The total number of confirmed cases presented in this report is subject to changes due to possible delays in reporting and processing. For additional information regarding SNHD influenza surveillance, please visit us at <http://southernnevadahealthdistrict.org/stats-reports/influenza-surveillance.php>.

