



Southern Nevada Weekly Influenza Surveillance Snapshot CDC Week 11, Mar 09, 2025, to Mar 15, 2025

Summary:

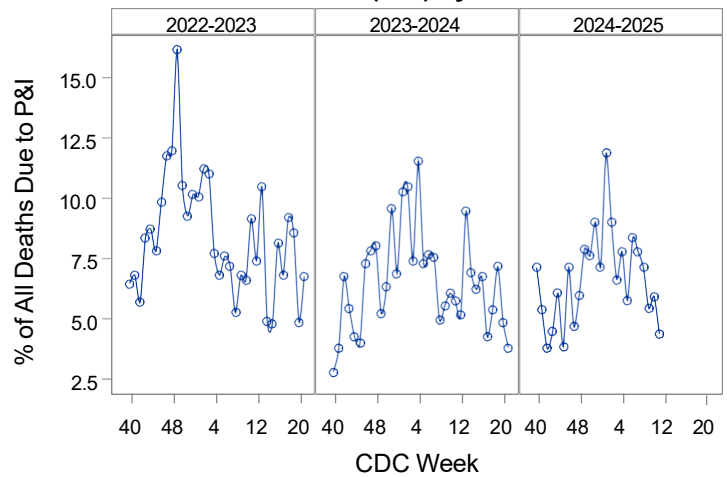
Influenza surveillance for Clark County, Nevada includes data collected from local acute care hospitals and other healthcare providers. In Clark County, as of 03/15/2025, for the 2024 - 2025 influenza season, 1,691 influenza-associated hospitalizations were reported. Currently there have been 75 deaths associated with influenza reported for the season. The percentage of emergency room (ER) and urgent care clinic visits for influenza-like illness [ILI (fever plus cough or sore throat)] increased from 4.2% during week 10 to 4.5% in week 11. Currently, Influenza A has been the predominant strain detected within the region. During week 11, 3.9% of outpatient patient visits nationally reported through the U.S. Outpatient Influenza-like Illness Surveillance Network (ILINet) were due to respiratory illness that included ILI. This percentage exceeds the national baseline of 3.0%. Among 55 states/jurisdictions, the respiratory illness activity level in the state of Nevada is moderate. The Southern Nevada Health District (SNHD) will continue to update the public on the progression of the influenza season and encourage influenza vaccination for all persons 6 months of age and older without contraindications.

Table 1: Influenza Report by Age Group, Clark County, NV (CDC Week 40, 2024 to Week 11, 2025)

Age Group	Deaths	Hospitalized
0-4	0	114
05-17	0	101
18-24	0	38
25-49	6	236
50-64	14	308
65+	55	894
Total Cases	75	1691

Source: SNHD EpiTrax Warehouse

Figure 1: Percent of Clark County Deaths Registered with Pneumonia and/or Influenza (P&I) by Week



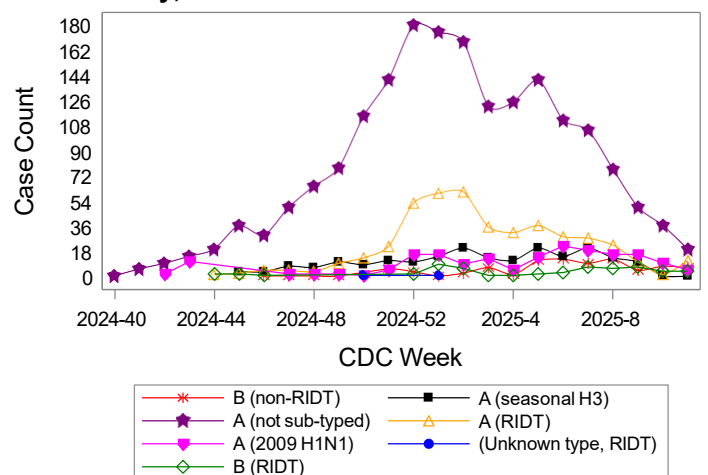
Source: Clark County Electronic Death Registry System

Table 2: Influenza Report by Virus Strain, Clark County, NV (CDC Week 40, 2024 to Week 11, 2025)

Influenza Type	Deaths	Hospitalized
A (2009 H1N1)	9	87
A (RIDT)	1	107
A (not sub-typed)	44	1231
A (seasonal H3)	20	179
B (RIDT)	1	27
B (non-RIDT)	0	58
Influenza (unknown type, RIDT)	0	2
Total Cases	75	1691

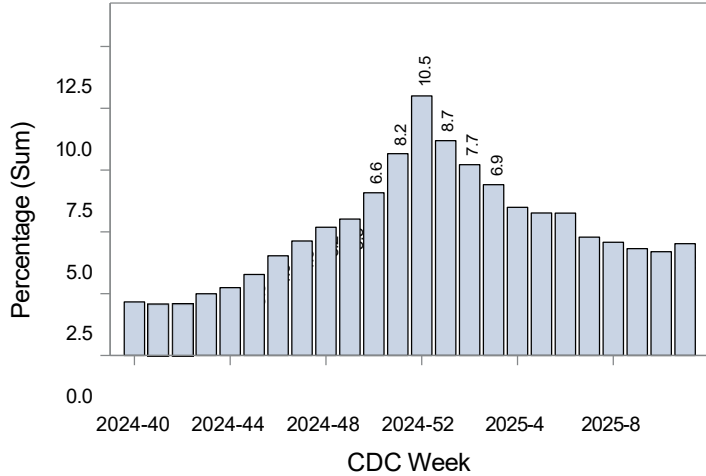
Source: SNHD EpiTrax Warehouse

Figure 2: Distribution of Confirmed Cases* by Virus Strain, Clark County, NV



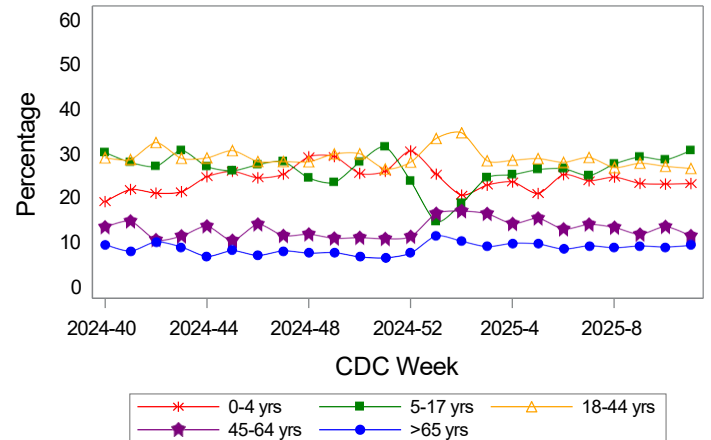
Source: SNHD EpiTrax Warehouse

Figure 3: Weekly Proportion of Emergency Room and Urgent Care Clinic Visits for Influenza-Like Illness, Clark County, NV



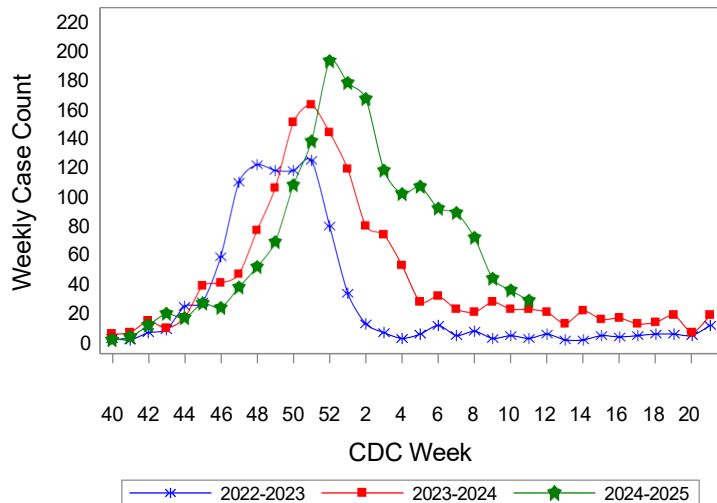
Source: Centers for Disease Control and Prevention. National Syndromic Surveillance Program. ESSENCE

Figure 4: Age Distribution of Emergency Room and Urgent Care Clinic Visits for Influenza-Like Illness, Clark County, NV



Source: Centers for Disease Control and Prevention. National Syndromic Surveillance Program. ESSENCE

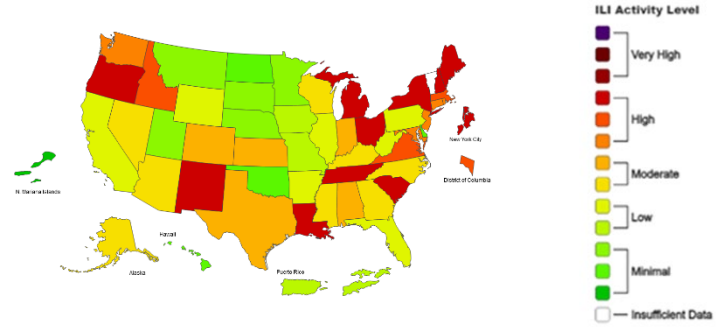
Figure 5: Seasonal Trends of Confirmed Cases* of Influenza, Clark County, NV



Total Confirmed Cases*(Week 40 - 11):
 881(2022-2023) 1303(2023-2024) 1713(2024-2025)

Source: SNHD EpiTrax Warehouse

Figure 6: National Outpatient Respiratory Illness Activity Level- 2024-2025 Influenza Season CDC Week 11 ending Mar 15, 2025



Source: Centers for Disease Control and Prevention: FluView

*Confirmed Cases= Laboratory confirmed by PCR, culture, immunofluorescent antibody staining (direct or indirect), IHC antigen staining, rapid influenza diagnostic tests (RIDTs) with hospitalizations for 24 hours or longer, or with deaths. This weekly report is only a reflection of the hospitalized cases and deaths reported for the current influenza season (Table 1 and Table 2). The number of total confirmed cases in Figure 5 includes number of hospitalizations, deaths with hospitalizations and deaths without hospitalizations.

Note: The total number of confirmed cases presented in this report is subject to changes due to possible delays in reporting and processing. For additional information regarding SNHD influenza surveillance, please visit us at <http://southernnevadahealthdistrict.org/stats-reports/influenza-surveillance.php>.



**Influenza Report by Age Group, Clark County, NV
(CDC Week 2024-40 to 2025-11)**

Age Group	Hospitalizations	Deaths*		Cases
		W/ hospitalization history	W/O hospitalization history	
0-4	114	0	0	114
05-17	101	0	0	101
18-24	38	0	0	38
25-49	236	4	2	238
50-64	308	8	6	314
65+	894	41	14	908
Total Confirmed Cases	1,691	53	22	1,713

**Influenza Report by Age Group, Clark County, NV
(CDC Week 2023-40 to 2024-11)**

Age Group	Hospitalizations	Deaths*		Cases
		W/ hospitalization history	W/O hospitalization history	
0-4	76	0	0	76
05-17	96	0	1	97
18-24	26	0	0	26
25-49	200	2	7	207
50-64	264	2	5	269
65+	613	54	15	628
Total Confirmed Cases	1,275	58	28	1,303

Note: This report does not include cases diagnosed by Rapid Influenza Diagnosis Test without hospitalization. The total number of confirmed influenza cases is determined by taking the sum of hospitalizations and Deaths W/O hospitalization history. Deaths that occur W/ hospitalization history are reflected in the hospitalization count.