



Southern Nevada Weekly Influenza Surveillance Snapshot CDC Week 19: May 05, 2024, to May 11, 2024

Summary:

Influenza surveillance for Clark County, Nevada includes data collected from local acute care hospitals and other healthcare providers. In Clark County, as of 5/11/2024, for the 2023 - 2024 influenza season, 1,382 influenza-associated hospitalizations with 48% being persons 65 years of age or older were reported. In addition, 85 deaths associated with influenza, including one influenza-associated pediatric death were reported for this season. Seventy-nine percent (79%) of deaths were in persons 65 years of age or older. The percentage of emergency room (ER) and urgent care clinic visits for influenza-like illness [ILI (fever plus cough or sore throat)] decreased from 3.3% in week 18 to 3.1% in week 19. Influenza A has been the dominant type circulating. Two percent of patient visits reported through the U.S. Outpatient Influenza-like Illness Surveillance Network (ILINet) were due to respiratory illness that included ILI. This percentage was below the national baseline of 2.9%. Among 55 states/jurisdictions, the respiratory illness activity level in the state of Nevada was minimal. The Southern Nevada Health District (SNHD) will continue to update the public on the progression of the influenza season and encourage influenza vaccination for all persons 6 months of age and older without contraindications.

Table 1: Influenza Report by Age Group, Clark County, NV (CDC Week 40, 2023 to Week 19, 2024)

Age Group	Deaths	Hospitalized
0-4	0	87
05-17	1	112
18-24	0	27
25-49	9	219
50-64	8	277
65+	67	660
Total Cases	85	1382

Figure 1: Percent of Clark County Deaths Registered with Pneumonia and/or Influenza (P&I) by Week

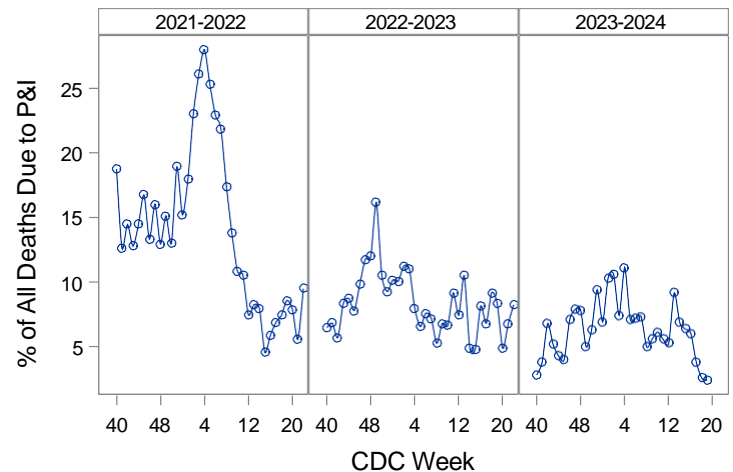


Table 2: Influenza Report by Virus Strain, Clark County, NV (CDC Week 40, 2023 to Week 19, 2024)

Influenza Type	Deaths	Hospitalized
A (2009 H1N1)	8	127
A (RIDT)	1	21
A (not sub-typed)	50	957
A (seasonal H3)	20	59
B (RIDT)	2	11
B (non-RIDT)	4	206
Influenza A/B	0	1
Total Cases	85	1382

Figure 2: Distribution of Confirmed Cases* by Virus Strain, Clark County, NV

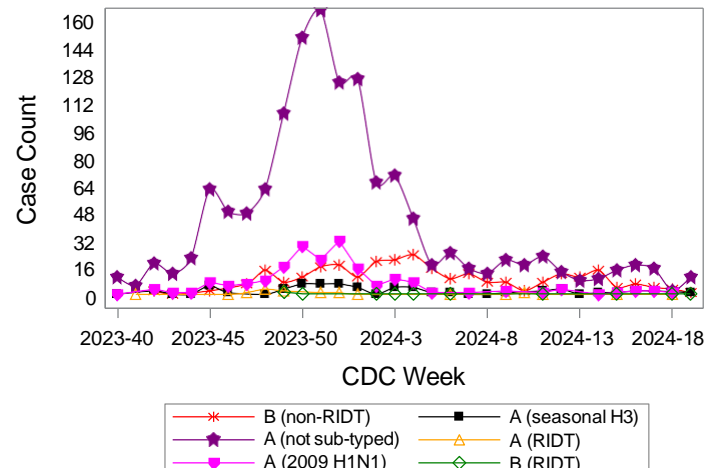


Figure 3: Weekly Proportion of Emergency Room and Urgent Care Clinic Visits for Influenza-Like Illness, Clark County, NV

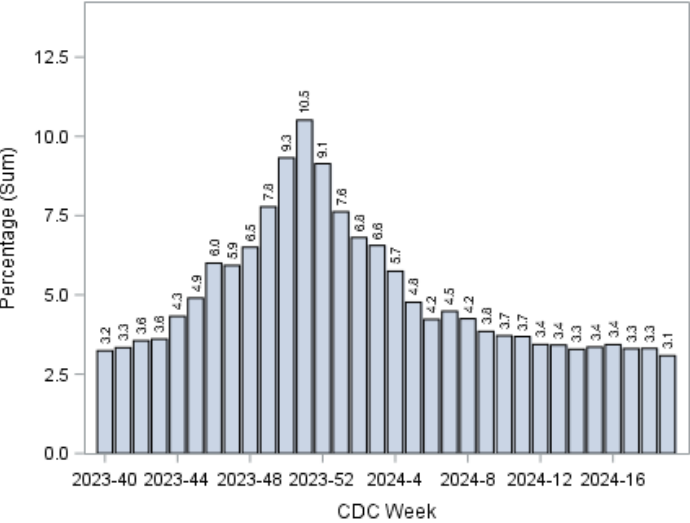


Figure 4: Age Distribution of Emergency Room and Urgent Care Clinic Visits for Influenza-Like Illness, Clark County, NV

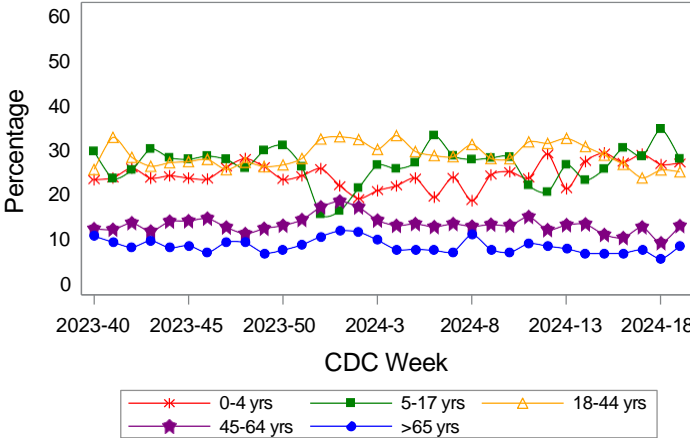


Figure 5: Seasonal Trends of Confirmed Cases* of Influenza, Clark County, NV

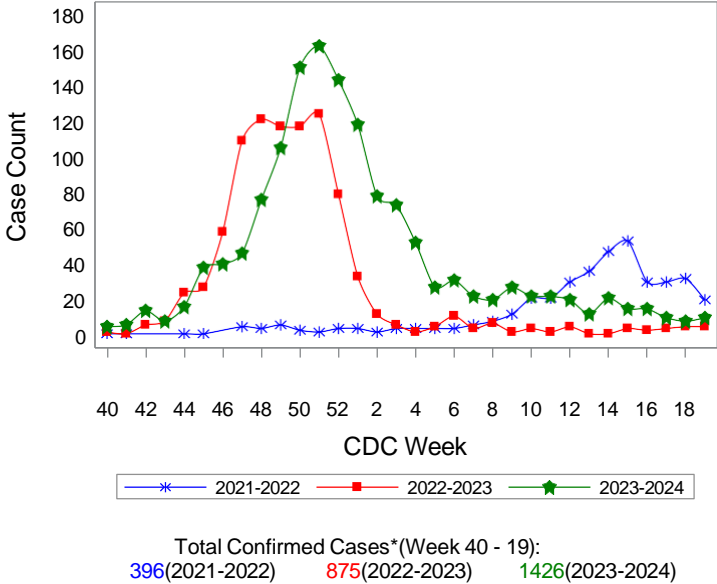


Figure 6: National Outpatient Respiratory Illness Activity Level- 2023-2024 Influenza Season CDC Week 19 ending May 11, 2024



*Confirmed Cases= Laboratory confirmed by PCR, culture, immunofluorescent antibody staining (direct or indirect), IHC antigen staining, rapid influenza diagnostic tests (RIDTs) with hospitalizations for 24 hours or longer, or with deaths. This weekly report is only a reflection of the hospitalized cases and deaths reported for the current influenza season (Table 1 and Table 2). The number of total confirmed cases in Figure 5 includes number of hospitalizations, deaths with hospitalizations and deaths without hospitalizations.

Note: The total number of confirmed cases presented in this report is subject to changes due to possible delays in reporting and processing. For additional information regarding SNHD influenza surveillance, please visit us at <http://southernnevadahealthdistrict.org/stats-reports/influenza-surveillance.php>.

Office of Informatics and Epidemiology (OIE)
Benjamin Ashraf, PhD, MPH, Epidemiologist