



## Southern Nevada Weekly Influenza Surveillance Snapshot CDC Week 47, November 20, 2022 to November 26, 2022

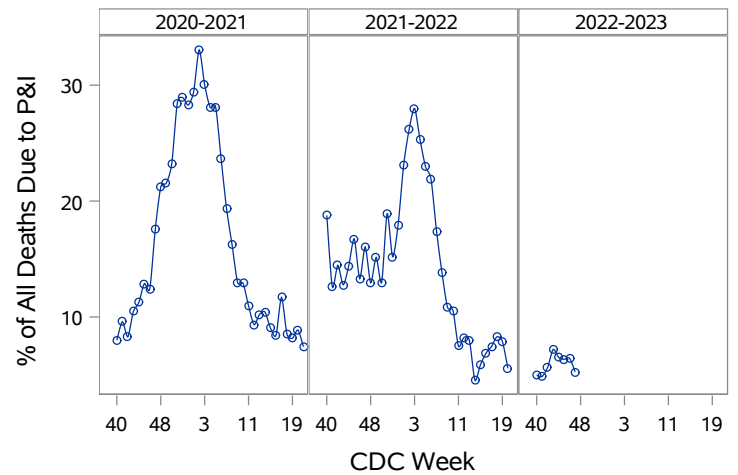
### Summary:

Influenza surveillance for Clark County, Nevada includes data collected from local acute care hospitals and other healthcare providers. In Clark County, as of 11/26/2022, for the 2022 - 2023 influenza season, 145 influenza-associated hospitalizations and 2 deaths associated with influenza were reported. The percentage of emergency room (ER) and urgent care clinic visits for influenza-like illness [ILI( fever plus cough or sore throat)] increased from 8% in week 46 to an alarming level of 10% in week 47. Approximately 58% area ER and urgent care clinic visits for ILI were made by children 0 - 17 years of age which was lower than week 46 (62%). Influenza A has been the dominant type circulating. Nationwide, during week 47, seasonal influenza activity is high and continues to increase across the country. Seven point five percent of patient visits reported through the U.S. Outpatient Influenza-like Illness Surveillance Network (ILINet) were due to respiratory illness that included ILI. This percentage was above the national baseline of 2.5%. Among 55 states/jurisdictions, the respiratory illness activity level in the state of Nevada increased from 'high' to 'very high'. Southern Nevada Health District will continue to update the public on the progression of the influenza season and encourage influenza vaccination for all persons 6 months of age and older without contraindications.

**Table 1: Influenza Report by Age Group, Clark County, NV (CDC Week 40, 2022 to Week 47, 2022)**

Age Group	Deaths	Hospitalized
0-4	0	9
05-17	0	17
18-24	0	3
25-49	1	21
50-64	1	28
65+	0	67
Total Cases	2	145

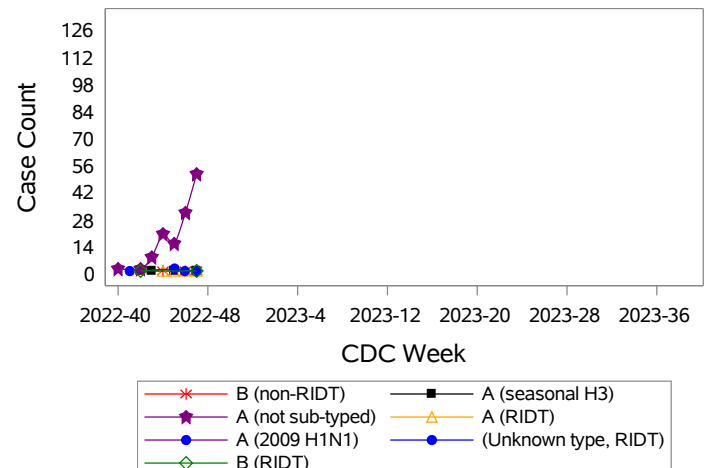
**Figure 1: Percent of Clark County Deaths Registered with Pneumonia and/or Influenza (P&I) by Week**



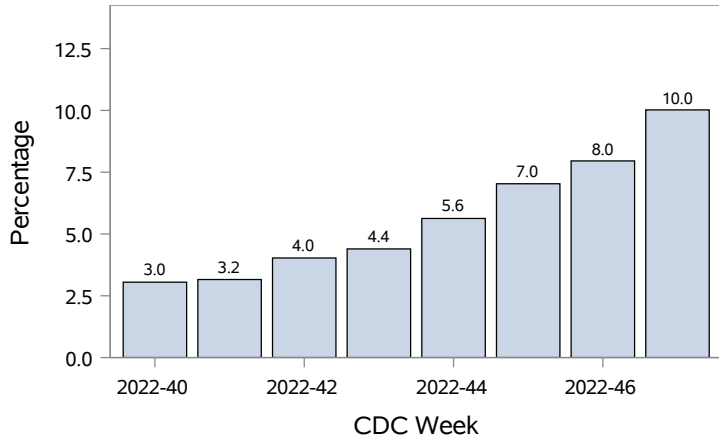
**Table 2: Influenza Report by Virus Strain, Clark County, NV (CDC Week 40, 2022 to Week 47, 2022)**

Influenza Type	Deaths	Hospitalized
(unknown type, RIDT)	0	1
A (2009 H1N1)	1	5
A (RIDT)	0	3
A (not sub-typed)	1	127
A (seasonal H3)	0	4
B (RIDT)	0	2
B (non-RIDT)	0	3
Total Cases	2	145

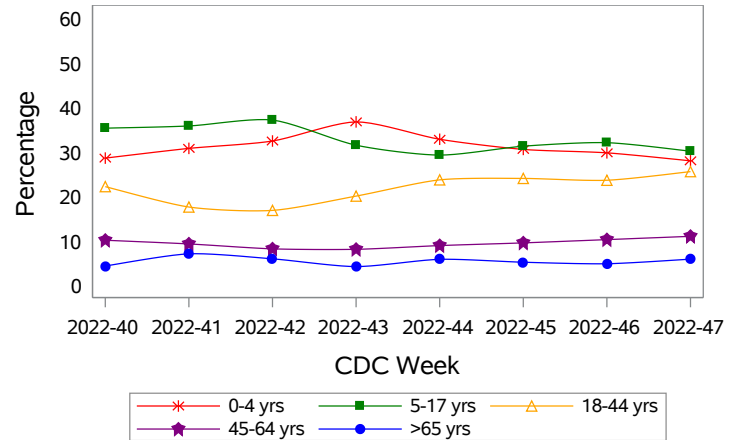
**Figure 2: Distribution of Confirmed Cases\* by Virus Strain, Clark County, NV**



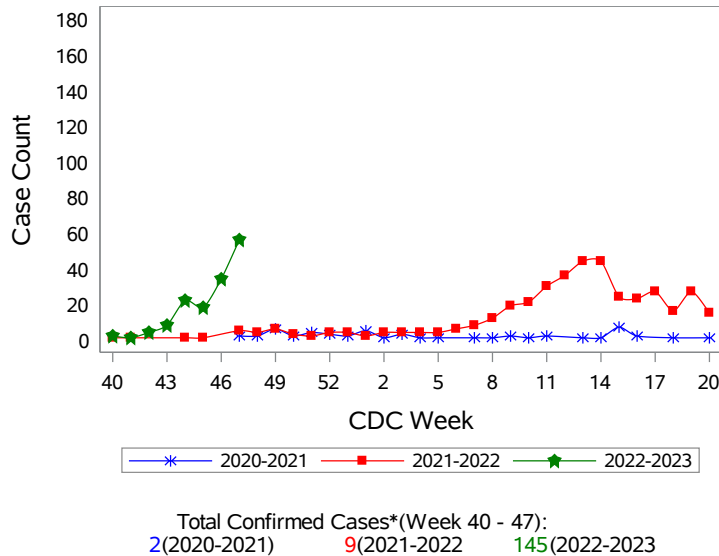
**Figure 3: Weekly Proportion of Emergency Room and Urgent Care Clinic Visits for Influenza-Like Illness, Clark County, NV**



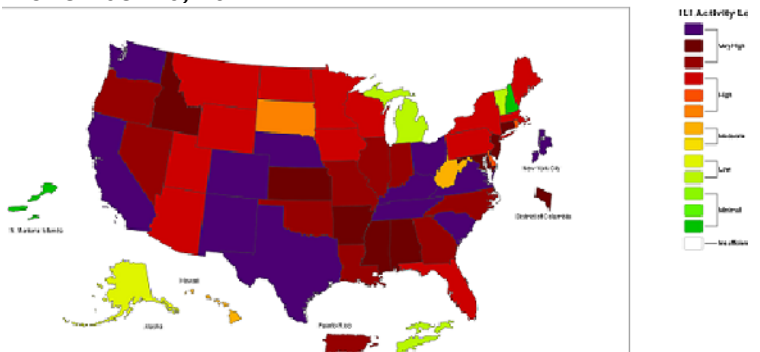
**Figure 4: Age Distribution of Emergency Room and Urgent Care Clinic Visits for Influenza-Like Illness, Clark County, NV**



**Figure 5: Seasonal Trends of Confirmed Cases of Influenza, Clark County, NV**



**Figure 6: National Outpatient Respiratory Illness Activity Level- 2022-2023 Influenza Season CDC Week 47 ending November 26, 2022**



\*Confirmed Cases= Laboratory confirmed by PCR, culture, immunofluorescent antibody staining (direct or indirect), IHC antigen staining, rapid influenza diagnostic tests (RIDTs) with hospitalizations for 24 hours or longer, or with deaths. This weekly report is only a reflection of the hospitalized cases and deaths reported for the current influenza season (Table 1 and Table 2). Number of total confirmed cases in Figure 5 includes number of hospitalization, deaths with hospitalization and deaths without hospitalization.

Note: The total number of confirmed cases presented in this report is subject to changes due to possible delays in reporting and processing. For additional information regarding SNHD influenza surveillance, please visit us at <http://southernnevadahealthdistrict.org/stats-reports/influenza-surveillance.php>.

Office of Epidemiology (OOE)  
 Zuwen Qiu-Shultz, MPH, CPH, Epidemiologist



## Influenza Report by Age Group, Clark County, NV

(MMWR Week 2022-40 to 2022-47)

Age Group	Hospitalizations	Deaths	Cases
0-4	9	0	9
05-17	17	0	17
18-24	3	0	3
25-49	21	1	21
50-64	28	1	28
65+	67	0	67
Total Confirmed Cases	145	2	145

## Influenza Report by Age Group, Clark County, NV

(MMWR Week 2021-40 to 2021-47)

Age Group	Hospitalizations	Deaths	Cases
0-4	0	0	0
05-17	0	0	0
18-24	2	0	2
25-49	2	0	2
50-64	1	0	1
65+	4	0	4
Total Confirmed Cases	9	0	9

Note: Influenza, Influenza A, Novel Virus and Influenza-associated death in a person under 18 are included.

The report doesn't include cases diagnosed by Rapid Influenza Diagnosis Test with no hospitalization.