



Southern Nevada Weekly Influenza Surveillance Snapshot CDC Week 52, December 26, 2021 to January 1, 2022

Summary:

Influenza surveillance for Clark County, Nevada includes data collected from local acute care hospitals and other healthcare providers. In Clark County, for the season as of 1/1/2022, 22 influenza-associated hospitalizations and one deaths associated with influenza had been reported. The percentage of emergency room (ER) and urgent care clinic visits for ILI reached alert level of 6.2% in week 52 which was higher than week 51 (4.3%). Approximately 15% area ER and urgent care clinic visits for ILI were made by children 0 - 4 years of age which was lower than week 51 (17%). 47% area ER and urgent care clinic visits for ILI were made by adult 18-44 years of age which was higher than week 51 (42%). Influenza A has been the dominant type circulating. Nationwide, seasonal influenza activity in the United States is increasing. During week 52, 4.8% of patient visits reported through the U.S. Outpatient Influenza-like Illness Surveillance Network (ILINet) were due to ILI. This percentage was above the national baseline of 2.5%. Among 55 states/jurisdictions, the ILI activity level in the state of Nevada was high. Southern Nevada Health District will continue to update the public on the progression of the influenza season and encourage influenza vaccination for all persons 6 months of age and older without contraindications.

Table 1: Influenza Report by Age Group, Clark County, NV (CDC Week 40, 2021 to Week 52, 2021)

Age Group	Deaths	Hospitalized
0-4	0	2
05-17	0	0
18-24	0	3
25-49	0	4
50-64	0	6
65+	1	7
Total Cases	1	22

Figure 1: Percent of Clark County Deaths Registered with Pneumonia and/or Influenza (P&I) by Week

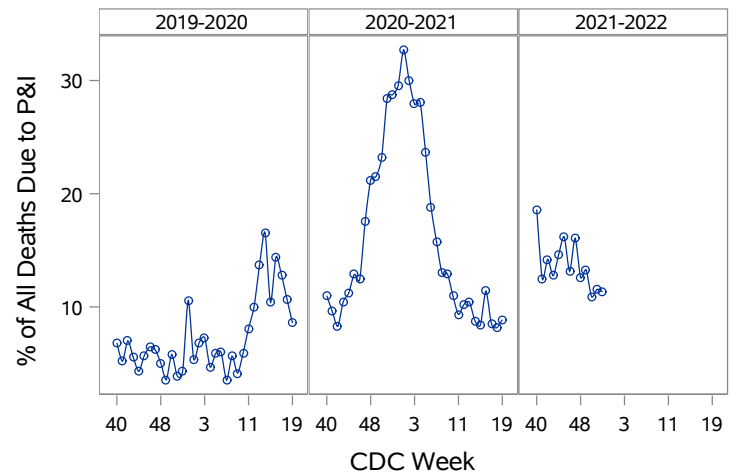


Table 2: Influenza Report by Virus Strain, Clark County, NV (CDC Week 40, 2021 to Week 52, 2021)

Influenza Type	Deaths	Hospitalized
(unknown type, RIDT)	0	0
A (2009 H1N1)	0	0
A (RIDT)	0	2
A (not sub-typed)	0	9
A (seasonal H3)	0	8
B (RIDT)	1	3
B (non-RIDT)	0	0
Total Cases	1	22

Figure 2: Distribution of Confirmed Cases* by Virus Strain, Clark County, NV

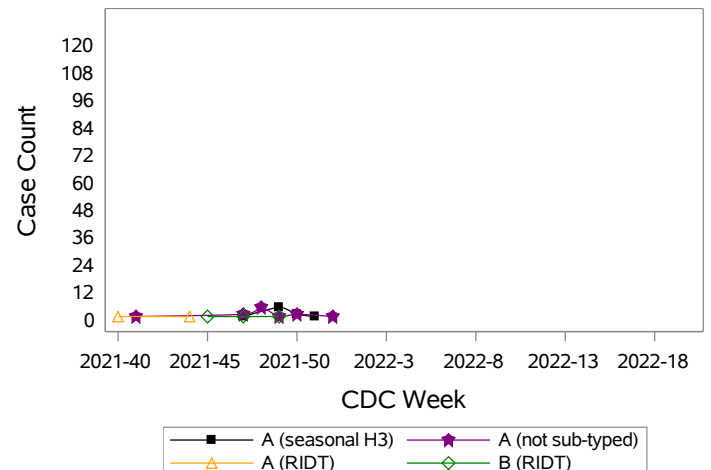


Figure 3: Weekly Proportion of Emergency Room and Urgent Care Clinic Visits for Influenza-Like Illness, Clark County, NV

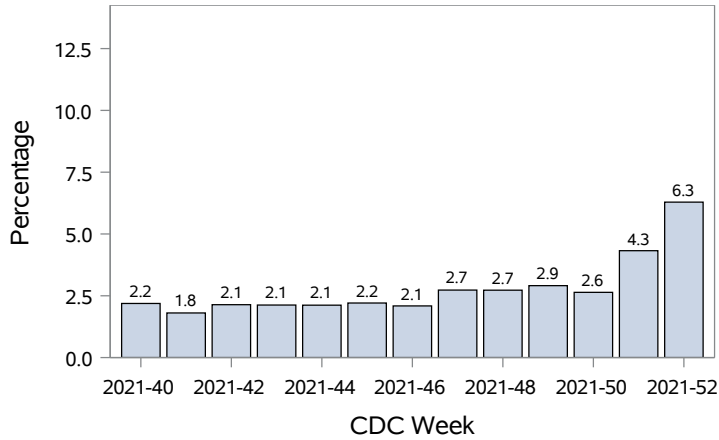


Figure 4: Age Distribution of Emergency Room and Urgent Care Clinic Visits for Influenza-Like Illness, Clark County, NV

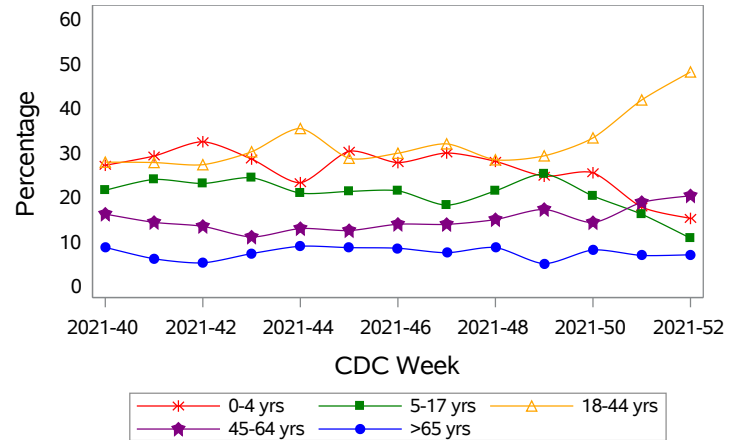


Figure 5: Seasonal Trends of Confirmed Cases of Influenza, Clark County, NV

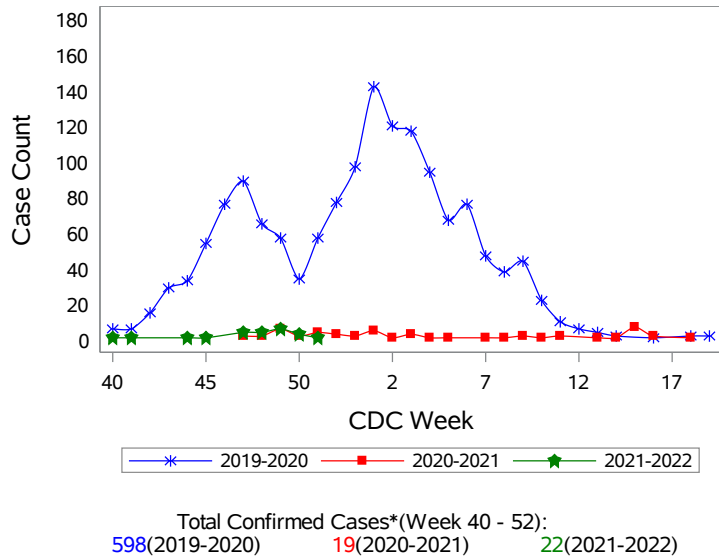
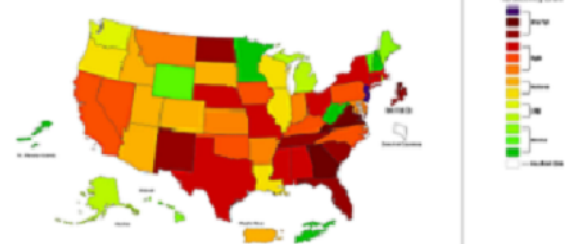


Figure 6: National ILI Activity Level- '2021-2022' Influenza Season CDC Week 52 ending January 1, 2022



*Confirmed Cases= Laboratory confirmed by PCR, culture, immunofluorescent antibody staining (direct or indirect), IHC antigen staining, rapid influenza diagnostic tests (RIDTs) with hospitalizations for 24 hours or longer, or RIDTs with death. This weekly report is only a reflection of the hospitalized cases and deaths reported for the current influenza season (Table 1 and Table 2). Number of total confirmed cases in Figure 5 includes number of hospitalization, deaths with hospitalization and deaths without hospitalization.

Note: The total number of confirmed cases presented in this report is subject to changes due to possible delays in reporting and processing. For additional information regarding SNHD influenza surveillance, please visit us at <http://southernnevadahealthdistrict.org/stats-reports/influenza-surveillance.php>.

Office of Epidemiology and Disease Surveillance (OEDS)
 Zuwen Qiu-Shultz, MPH, CPH, Epidemiologist