



**Southern Nevada Weekly Influenza  
Surveillance Snapshot  
CDC Week 53, December 27, 2020 to January 2, 2021**

**Summary:** The Southern Nevada Health District (SNHD) Office of Epidemiology and Disease Surveillance (OEDS) began surveillance for the 2020–2021 influenza season on September 27, 2020 and will continue through May 22, 2021. Influenza surveillance for Clark County, Nevada includes data collected from local acute care hospitals and other healthcare providers. As of January 2, 2021, ten hospitalized cases (an increase of 5 cases since week 52 report) and one death associated with influenza had been reported to SNHD for Clark County. During week 53, the percentage of emergency room (ER) and urgent care clinic visits for influenza-like illness (ILI) in Clark County was 3.2% which was higher than week 52 (2.6%). Nationwide, seasonal influenza activity in the United States remains lower than usual for this time of the year. According to the U.S. Outpatient Influenza-like Illness Surveillance Network (ILINet), 1.6% of reported patient visits were due to ILI, which was the same as the previous week (1.6%). The US ILI activity remains below the national baseline of 2.6%. Among 54 states/jurisdictions, the ILI activity level in the state of Nevada is low. ILI surveillance may be impacted by Covid-19 pandemic and should be interpreted with caution.

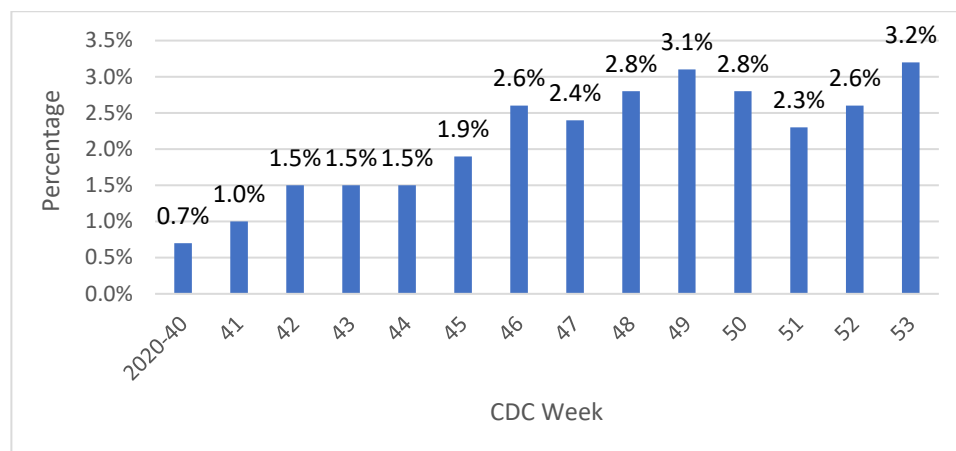
**Clark County Influenza Key Statistics (CDC Week 40, 2020 to Week 53, 2020)**

|                                       |             |
|---------------------------------------|-------------|
| Hospitalizations                      | 10          |
| Most Common Influenza Strain          | Influenza A |
| Influenza-associated Deaths           | 1           |
| Pediatric Influenza-associated deaths | 0           |

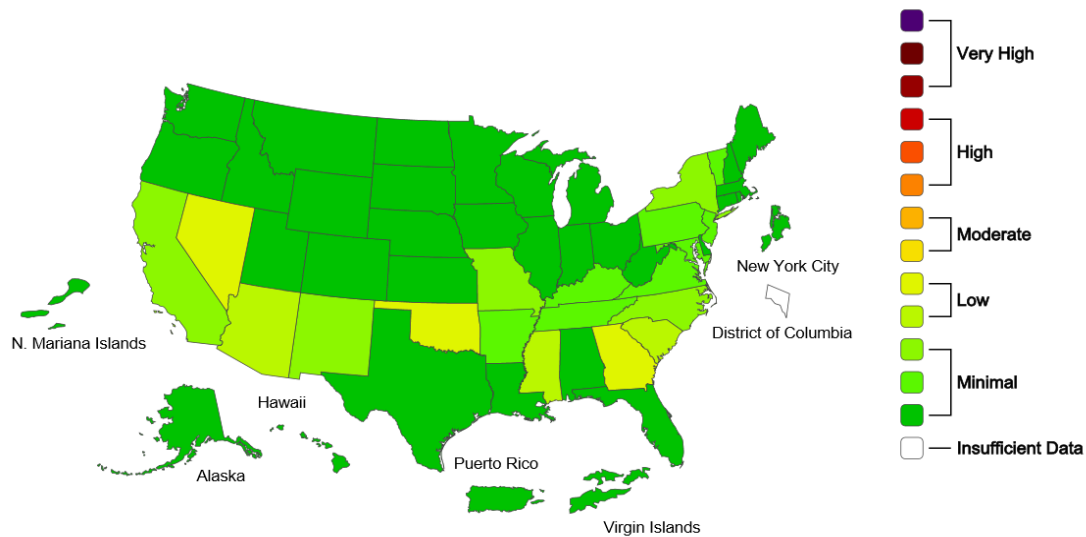
**Clark County Influenza Seasonal Comparison (CDC Week 40, 2020 to Week 53, 2020)**

| Influenza Season | Total Hospitalizations | Total Deaths | Total Pediatric (<18 years) Deaths |
|------------------|------------------------|--------------|------------------------------------|
| 2017-2018        | 409                    | 29           | 3                                  |
| 2018-2019        | 176                    | 8            | 1                                  |
| 2019-2020        | 597                    | 15           | 1                                  |
| 2020-2021        | 10 (to date)           | 1 (to date)  | 0 (to date)                        |

**Weekly Percentage of Emergency Room and Urgent Care Clinic Visits for ILI, Clark County, NV**



## **National ILI Activity Level – 2020-2021 Influenza Season CDC Week 53 ending January 2, 2020**



### **Influenza Vaccination and COVID-19**

A retrospective observational study was conducted among hospitalized patients with COVID-19 in Brazil between January 1, 2020 and June 23, 2020. A total of 53,752 clinically confirmed COVID-19 cases with available influenza vaccination information were analyzed. After controlling variables such as health facility of treatment, comorbidities as well as an extensive range of sociodemographic factors, patients who received a recent influenza vaccine experienced on average 7% lower odds of needing intensive care treatment (95% CI 0.87 to 0.98), 17% lower odds of requiring invasive respiratory support (95% CI 0.77 to 0.88) and 16% lower odds of death (95% CI 0.78 to 0.90). Protective effects were larger when the vaccine was administered after onset of symptoms as well as among younger patients. The study concludes that Patients with COVID-19 with recent inactivated influenza vaccination experience significantly better health outcomes than non-vaccinated patients in Brazil.

The study can be accessed here: [Inactivated trivalent influenza vaccination is associated with lower mortality among patients with COVID-19 in Brazil.](#)

#### **Key Points:**

1. Flu activity is unusually low at this time but may increase in the coming months.
2. An annual flu vaccine is the best way to protect against flu and its potentially serious complications.
3. If you haven't gotten your flu vaccine yet, [get vaccinated now.](#)

If you have any questions on influenza or influenza surveillance, please contact OEDS at (702) 759-1300.

Office of Epidemiology and Disease Surveillance (OEDS)