



Southern Nevada Weekly Influenza Surveillance Snapshot CDC Week 51, December 15, 2019 to December 21, 2019

Summary:

Influenza surveillance for Clark County, Nevada includes data collected from local acute care hospitals and other healthcare providers. Influenza activity in the United States continues to increase and has been elevated for seven weeks. During week 51, in the state of Nevada, Influenza-Like Illness (ILI) activity was widespread but low. In Clark County, for the season, as of 12/21/2019, 478 influenza-associated hospitalizations and 5 influenza-associated deaths were reported. The proportion of emergency room (ER) and urgent care clinic visits for ILI was 3.5% in week 51 which was slightly lower than week 50 (4.2%). Approximately 45% of area ER and urgent care clinic visits for ILI were made by children under 18 years of age. Influenza B was the dominant type circulating. Southern Nevada Health District will continue to update the public on the progression of the influenza season and encourage influenza vaccination for all persons 6 months of age and older.

Table 1: Influenza Report by Age Group, Clark County, NV (CDC Week 40, 2019 to Week 51, 2020)

Age Group	Deaths	Hospitalized
0-4	0	47
05-17	0	51
18-24	0	30
25-49	0	116
50-64	1	88
65+	4	145
Age Unknown	0	1
Total Cases	5	478

Figure 1: Percent of Clark County Deaths Registered with Pneumonia and/or Influenza by Week

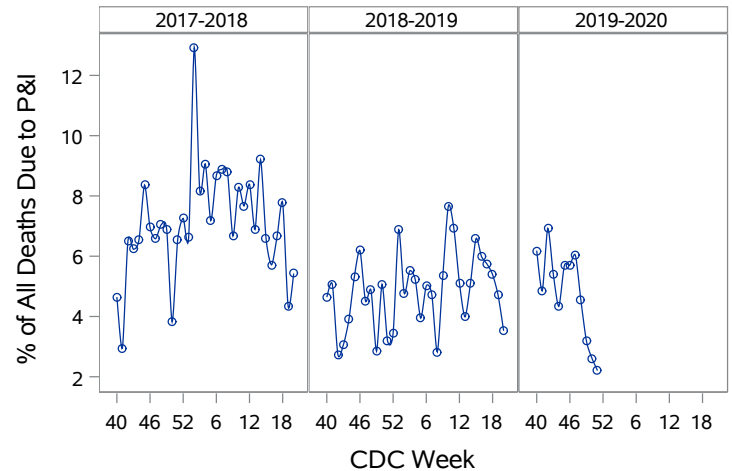


Table 2: Influenza Report by Virus Strain, Clark County, NV (CDC Week 40, 2019 to Week 51, 2020)

Influenza Type	Deaths	Hospitalized
A (2009 H1N1)	0	13
A (RIDT)	1	35
A (not sub-typed)	0	110
A (unknown type, RIDT)	0	1
A (seasonal H3)	0	1
B (RIDT)	0	81
B (non-RIDT)	4	237
Total Cases	5	478

Figure 2: Distribution of Confirmed Cases* by Virus Strain, Clark County, NV

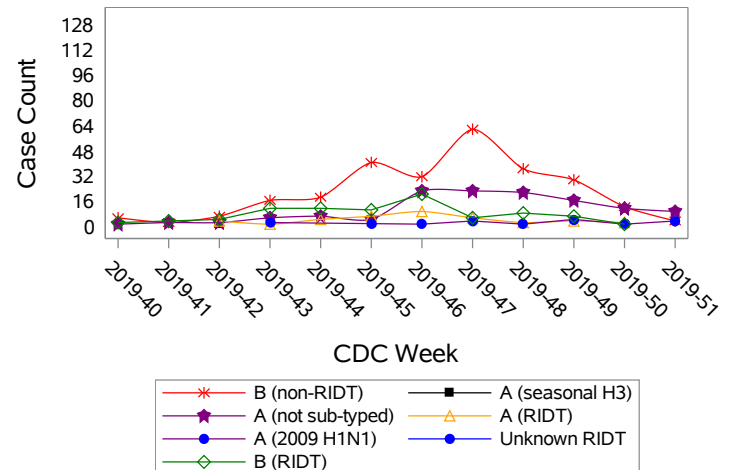


Figure 3: Weekly Proportion of Emergency Room and Urgent Care Clinic Visits for Influenza-Like Illness, Clark County, NV

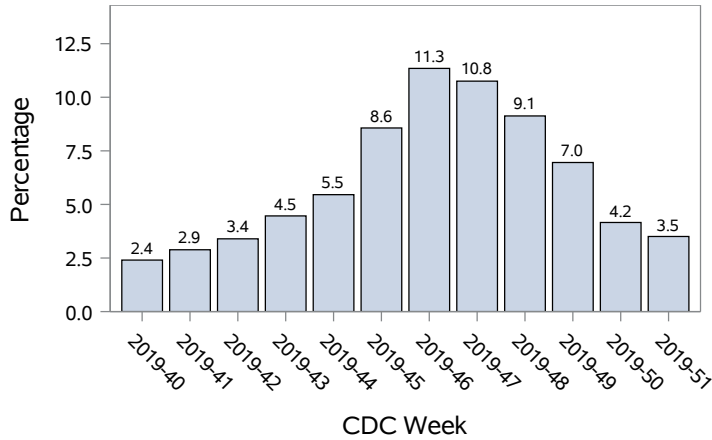


Figure 4: Age Distribution of Emergency Room and Urgent Care Clinic Visits for Influenza-Like Illness, Clark County, NV

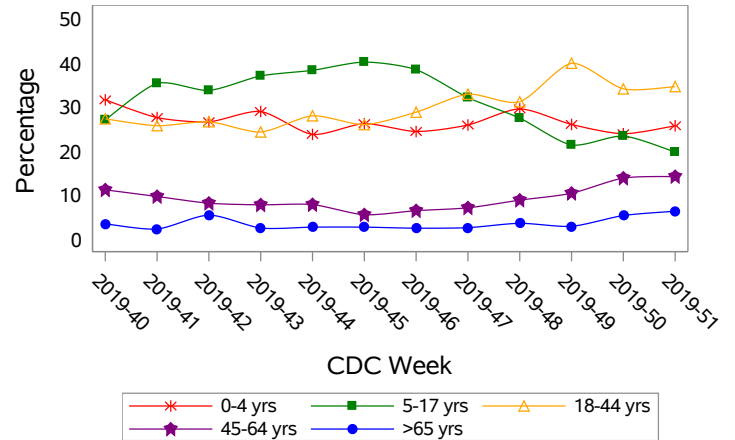


Figure 5: Seasonal Trends of Confirmed Cases of Influenza, Clark County, NV

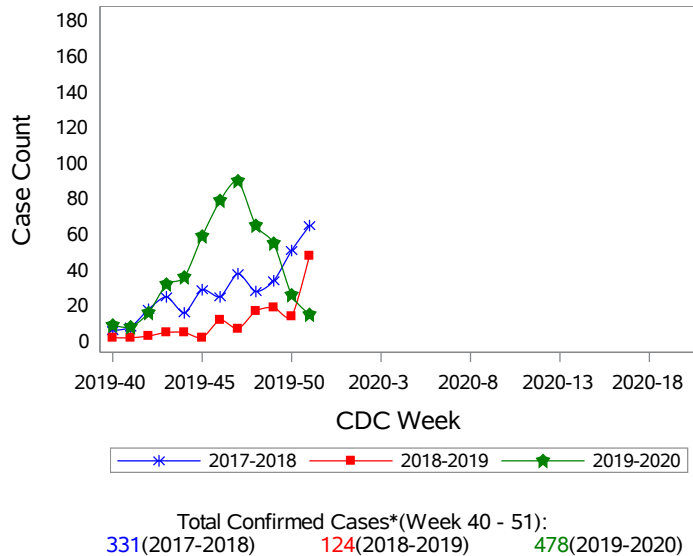
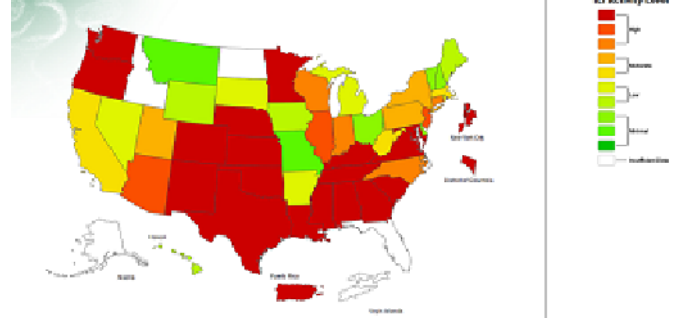


Figure 6: National ILI Activity Level- 2019-2020 Influenza Season CDC Week 51 ending December 21, 2019



*Confirmed Cases= Laboratory confirmed by PCR, culture, immunofluorescent antibody staining (direct or indirect), IHC antigen staining, rapid influenza diagnostic tests (RIDTs) with hospitalizations for 24 hours or longer, or RIDTs with death. This weekly report is only a reflection of the hospitalized cases and deaths reported for the current influenza season.

Note: The total number of confirmed cases presented in this report is subject to changes due to possible delays in reporting and processing. For additional information regarding SNHD influenza surveillance, please visit us at <http://southernnevadahealthdistrict.org/stats-reports/influenza-surveillance.php>.

Office of Epidemiology and Disease Surveillance (OEDS)
 Zuwen Qiu-Shultz, MPH, CPH, Epidemiologist