



## Southern Nevada Weekly Influenza Surveillance Snapshot CDC Week 50, December 8, 2019 to December 14, 2019

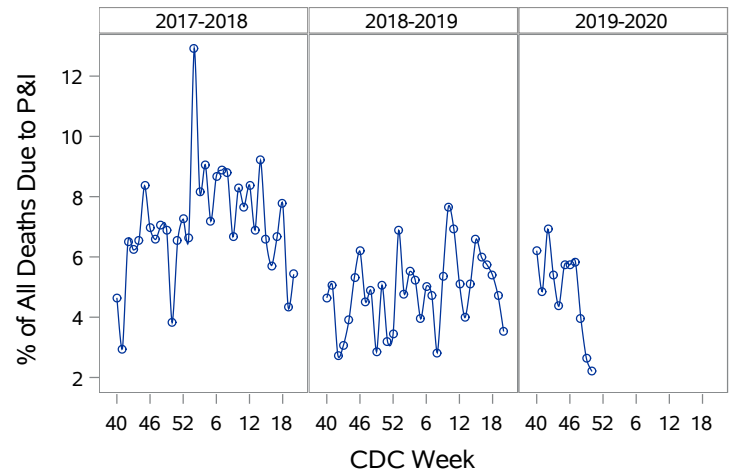
### Summary:

Influenza surveillance for Clark County, Nevada includes data collected from local acute care hospitals and other healthcare providers. Seasonal Influenza activity in the United States has been elevated for six weeks and continues to increase. During week 50, in the state of Nevada, Influenza-Like Illness (ILI) activity was low but widespread. In Clark County, for the season, as of 12/14/2019, 450 influenza-associated hospitalizations and 5 influenza-associated deaths were reported. The proportion of emergency room (ER) and urgent care clinic visits for ILI was 4% in week 50 which was lower than week 49 (7%). Approximately 47% of area ER and urgent care clinic visits for ILI were made by children under 18 years of age. The percentage of patients in the 18-44 age group that visited area ER and urgent care clinics for ILI decreased from 40% in week 49 to 34% in week 50. Influenza B was the dominant type circulating. Southern Nevada Health District will continue to update the public on the progression of the influenza season and encourage influenza vaccination for all persons 6 months of age and older.

**Table 1: Influenza Report by Age Group, Clark County, NV (CDC Week 40, 2019 to Week 50, 2019)**

Age Group	Deaths	Hospitalized
0-4	0	46
05-17	0	49
18-24	0	30
25-49	0	110
50-64	1	81
65+	4	133
Age Unknown	0	1
Total Cases	5	450

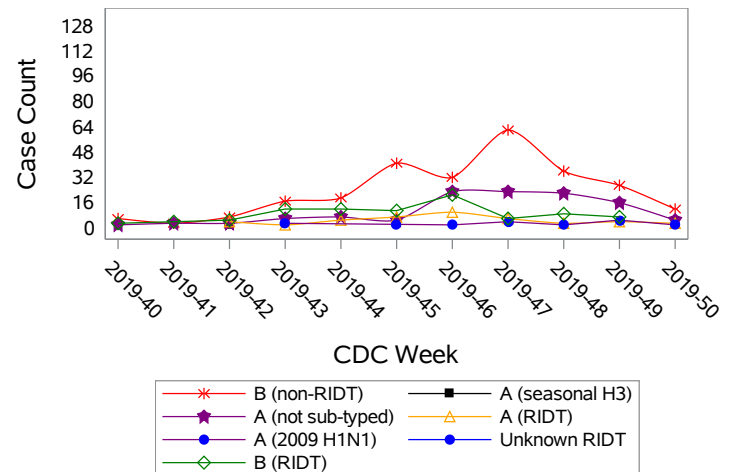
**Figure 1: Percent of Clark County Deaths Registered with Pneumonia and/or Influenza by Week**



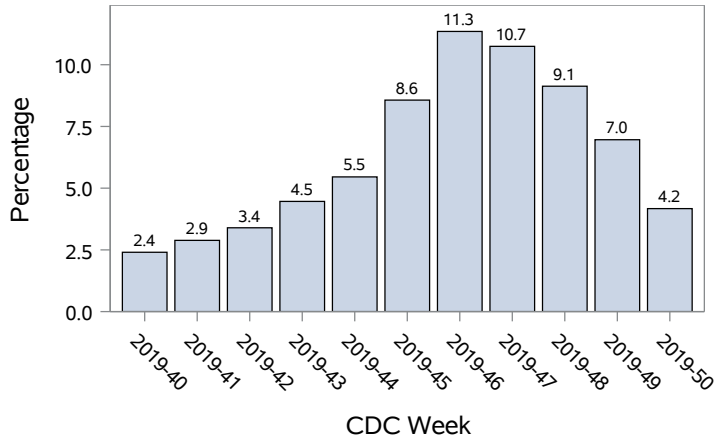
**Table 2: Influenza Report by Virus Strain, Clark County, NV (CDC Week 40, 2019 to Week 50, 2019)**

Influenza Type	Deaths	Hospitalized
A (2009 H1N1)	0	10
A (RIDT)	1	35
A (not sub-typed)	0	94
A (unknown type, RIDT)	0	1
A (seasonal H3)	0	1
B (RIDT)	0	80
B (non-RIDT)	4	229
Total Cases	5	450

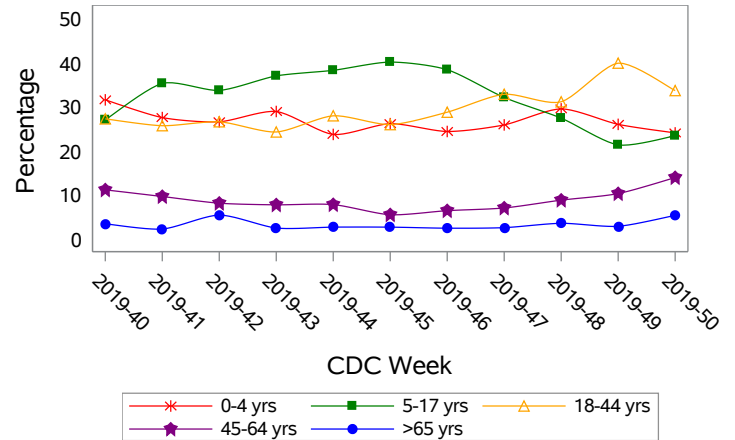
**Figure 2: Distribution of Confirmed Cases\* by Virus Strain, Clark County, NV**



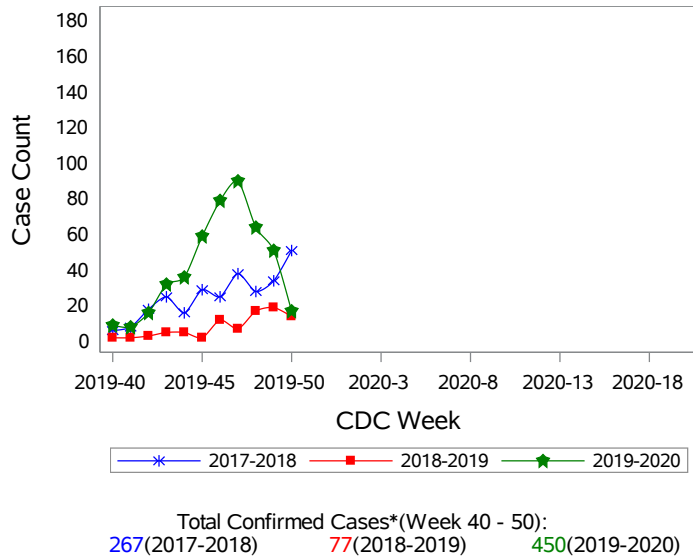
**Figure 3: Weekly Proportion of Emergency Room and Urgent Care Clinic Visits for Influenza-Like Illness, Clark County, NV**



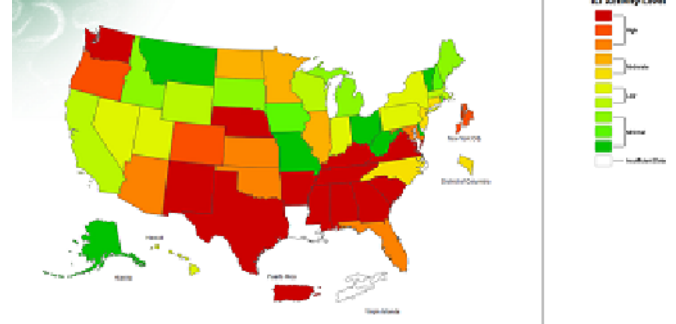
**Figure 4: Age Distribution of Emergency Room and Urgent Care Clinic Visits for Influenza-Like Illness, Clark County, NV**



**Figure 5: Seasonal Trends of Confirmed Cases of Influenza, Clark County, NV**



**Figure 6: National ILI Activity Level- 2019-2020 Influenza Season CDC Week 50 ending December 14, 2019**



\*Confirmed Cases= Laboratory confirmed by PCR, culture, immunofluorescent antibody staining (direct or indirect), IHC antigen staining, rapid influenza diagnostic tests (RIDTs) with hospitalizations for 24 hours or longer, or RIDTs with death. This weekly report is only a reflection of the hospitalized cases and deaths reported for the current influenza season.

Note: The total number of confirmed cases presented in this report is subject to changes due to possible delays in reporting and processing. For additional information regarding SNHD influenza surveillance, please visit us at <http://southernnevadahealthdistrict.org/stats-reports/influenza-surveillance.php>.

Office of Epidemiology and Disease Surveillance (OEDS)  
 Zuwen Qiu-Shultz, MPH, CPH, Epidemiologist