



Southern Nevada Weekly Influenza Surveillance Snapshot CDC Week 49, December 1, 2019 to December 7, 2019

Summary:

Influenza surveillance for Clark County, Nevada includes data collected from local acute care hospitals and other healthcare providers. Seasonal Influenza activity in the United States has been elevated for five weeks and continues to increase. During week 49, in the state of Nevada, Influenza-Like Illness (ILI) activity was moderate and widespread. In Clark County, for the season, as of 12/7/2019, 403 influenza-associated hospitalizations and four influenza-associated deaths were reported. The proportion of emergency room (ER) and urgent care clinic visits for ILI was 7% in week 49 which was lower than week 48 (9.1%). Approximately 47% of area ER and urgent care clinic visits for ILI were made by children under 18 years of age. The percentage of patients in the 18-44 age group that visited area ER and urgent care clinics for ILI increased from 31% in week 48 to 40% in week 49. Influenza B was the dominant type circulating. Southern Nevada Health District will continue to update the public on the progression of the influenza season and encourage influenza vaccination for all persons 6 months of age and older.

Table 1: Influenza Report by Age Group, Clark County, NV (CDC Week 40, 2019 to Week 49, 2019)

Age Group	Deaths	Hospitalized
0-4	0	42
05-17	0	47
18-24	0	26
25-49	0	99
50-64	0	71
65+	4	117
Age Unknown	0	1
Total Cases	4	403

Figure 1: Percent of Clark County Deaths Registered with Pneumonia and/or Influenza by Week

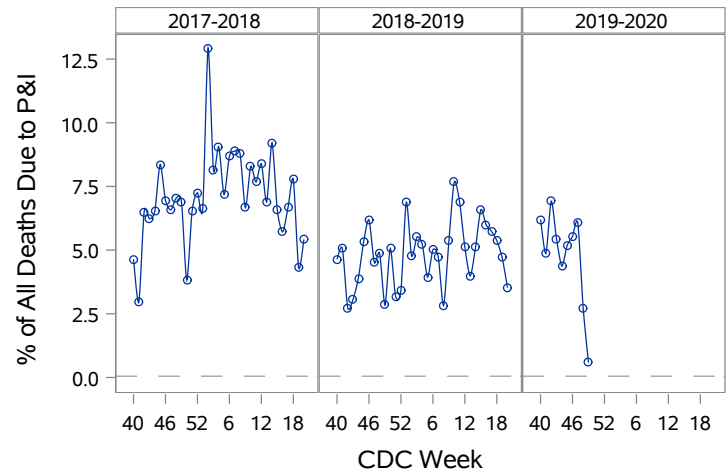


Table 2: Influenza Report by Virus Strain, Clark County, NV (CDC Week 40, 2019 to Week 49, 2019)

Influenza Type	Deaths	Hospitalized
A (2009 H1N1)	0	8
A (RIDT)	1	32
A (not sub-typed)	0	80
A (unknown type, RIDT)	0	1
A (seasonal H3)	0	1
B (RIDT)	0	75
B (non-RIDT)	3	206
Total Cases	4	403

Figure 2: Distribution of Confirmed Cases* by Virus Strain, Clark County, NV

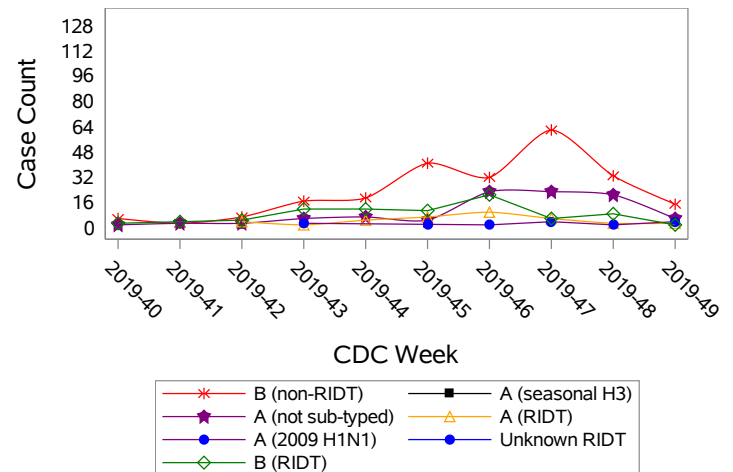


Figure 3: Weekly Proportion of Emergency Room and Urgent Care Clinic Visits for Influenza-Like Illness, Clark County, NV

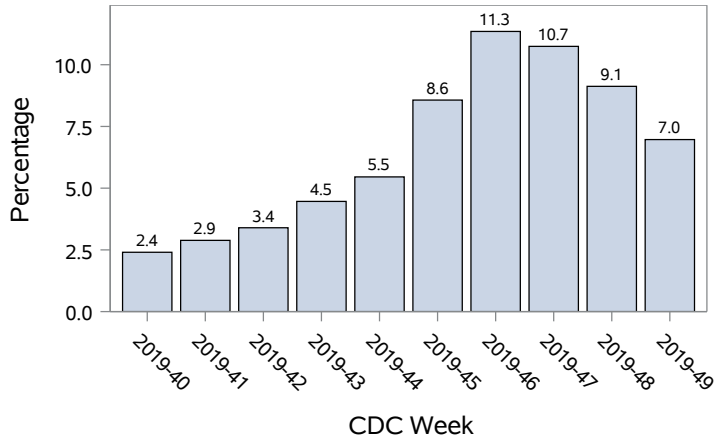


Figure 4: Age Distribution of Emergency Room and Urgent Care Clinic Visits for Influenza-Like Illness, Clark County, NV

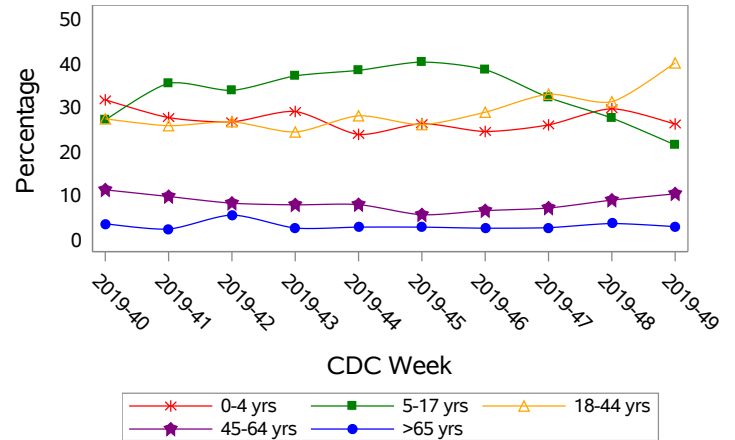


Figure 5: Seasonal Trends of Confirmed Cases of Influenza, Clark County, NV

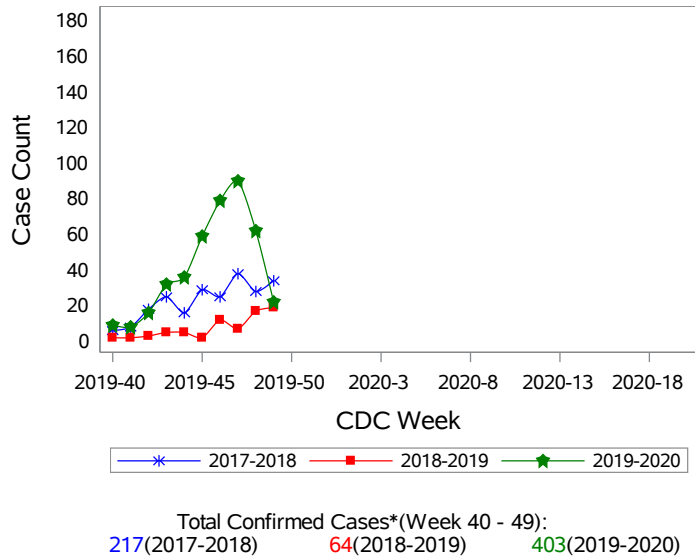
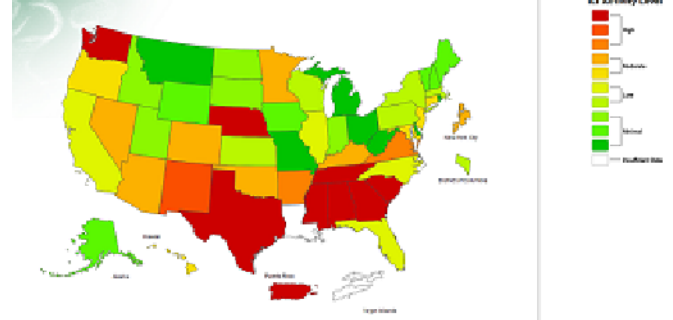


Figure 6: National ILI Activity Level- 2019-2020 Influenza Season CDC Week 49 ending December 7, 2019



*Confirmed Cases= Laboratory confirmed by PCR, culture, immunofluorescent antibody staining (direct or indirect), IHC antigen staining, rapid influenza diagnostic tests (RIDTs) with hospitalizations for 24 hours or longer, or RIDTs with death. This weekly report is only a reflection of the hospitalized cases and deaths reported for the current influenza season.

Note: The total number of confirmed cases presented in this report is subject to changes due to possible delays in reporting and processing. For additional information regarding SNHD influenza surveillance, please visit us at <http://southernnevadahealthdistrict.org/stats-reports/influenza-surveillance.php>.

Office of Epidemiology and Disease Surveillance (OEDS)
Zuwen Qiu-Shultz, MPH, CPH, Epidemiologist