



Southern Nevada Weekly Influenza Surveillance Snapshot CDC Week 20, May 10, 2020 to May 16, 2020

Summary:

Influenza surveillance for Clark County, Nevada includes data collected from local acute care hospitals and other healthcare providers. Influenza activity as reported by clinical laboratories in the United States remains low. Influenza-Like Illness (ILI) activity continues to decrease and is below the national baseline. During week 20, in the state of Nevada, ILI activity was minimal. In Clark County, for the season, as of 5/16/2020, 1398 influenza-associated hospitalizations and 54 influenza-associated deaths including 1 pediatric death were reported. The proportion of emergency room (ER) and urgent care clinic visits for ILI was 2.0% in week 20 which was slightly higher than week 19 (1.9%). Approximately 42.8% of area ER and urgent care clinic visits for ILI were made by adults 18 - 44 years of age. Influenza A has become the dominant type circulating. This is the last influenza weekly report for the 2019-2020 season. Southern Nevada Health District will resume the influenza weekly reporting when 2020-2021 flu season starts on September 27, 2020.

Table 1: Influenza Report by Age Group, Clark County, NV (CDC Week 40, 2019 to Week 20, 2020)

Age Group	Deaths	Hospitalized
0-4	1	122
05-17	0	81
18-24	0	44
25-49	3	293
50-64	17	352
65+	33	506
Total Cases	54	1398

Figure 1: Percent of Clark County Deaths Registered with Pneumonia and/or Influenza (P&I) by Week

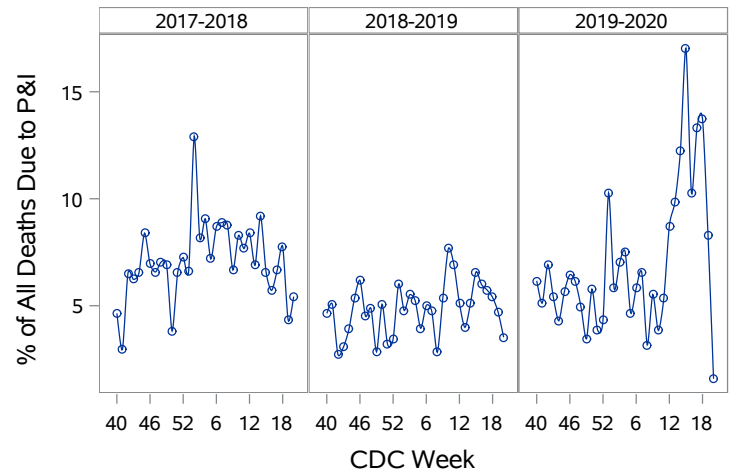


Table 2: Influenza Report by Virus Strain, Clark County, NV (CDC Week 40, 2019 to Week 20, 2020)

Influenza Type	Deaths	Hospitalized
A (2009 H1N1)	6	126
A (RIDT)	12	215
A (not sub-typed)	23	673
Influenza (unknown type, RIDT)	0	1
A (seasonal H3)	1	5
B (RIDT)	1	92
B (non-RIDT)	11	286
Total Cases	54	1398

Figure 2: Distribution of Confirmed Cases* by Virus Strain, Clark County, NV

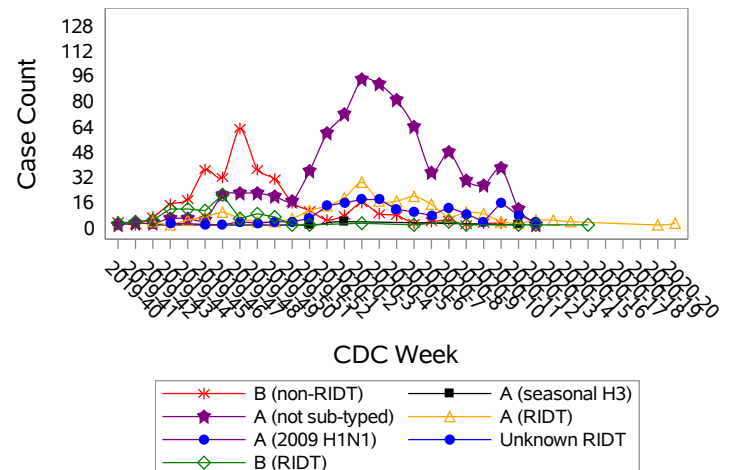


Figure 3: Weekly Proportion of Emergency Room and Urgent Care Clinic Visits for Influenza-Like Illness, Clark County, NV

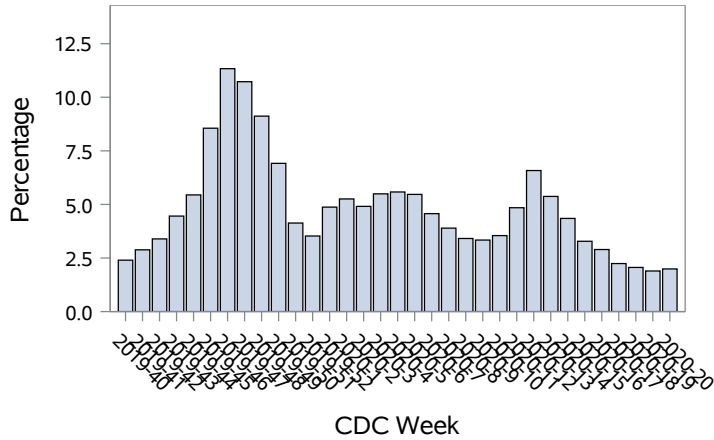


Figure 4: Age Distribution of Emergency Room and Urgent Care Clinic Visits for Influenza-Like Illness, Clark County, NV

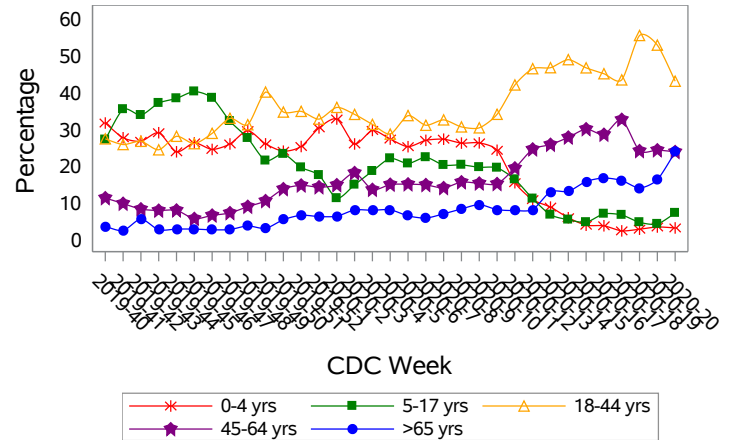


Figure 5: Seasonal Trends of Confirmed Cases of Influenza, Clark County, NV

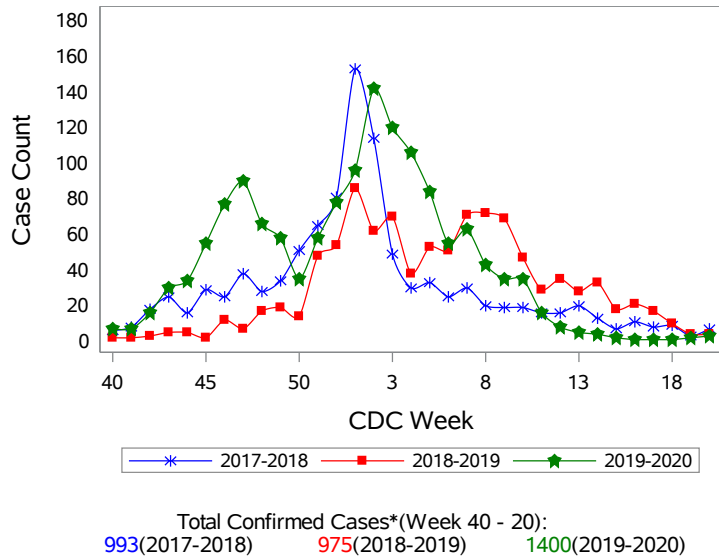
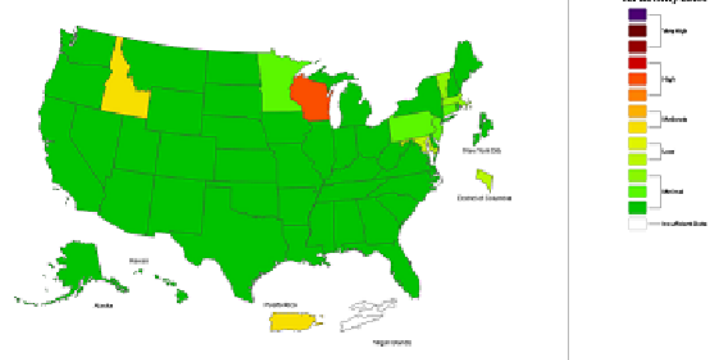


Figure 6: National ILI Activity Level- 2019-2020 Influenza Season CDC Week 20 ending May 16, 2020



*Confirmed Cases= Laboratory confirmed by PCR, culture, immunofluorescent antibody staining (direct or indirect), IHC antigen staining, rapid influenza diagnostic tests (RIDTs) with hospitalizations for 24 hours or longer, or RIDTs with death. This weekly report is only a reflection of the hospitalized cases and deaths reported for the current influenza season (Table 1 and Table 2). Number of total confirmed cases in Figure 5 includes number of hospitalization, deaths with hospitalization and deaths without hospitalization.

Note: The total number of confirmed cases presented in this report is subject to changes due to possible delays in reporting and processing. For additional information regarding SNHD influenza surveillance, please visit us at <http://southernnevadahealthdistrict.org/stats-reports/influenza-surveillance.php>.

Office of Epidemiology and Disease Surveillance (OEDS)
 Zuwen Qiu-Shultz, MPH, CPH, Epidemiologist