



Southern Nevada Weekly Influenza Surveillance Snapshot CDC Week 16, April 12, 2020 to April 18, 2020

Summary:

Influenza surveillance for Clark County, Nevada includes data collected from local acute care hospitals and other healthcare providers. Influenza activity as reported by clinical laboratories in the United States is now low. Influenza-Like Illness (ILI) activity continues to decrease and is below the national baseline. During week 16, in the state of Nevada, ILI activity was minimal and regional. In Clark County, for the season, as of 4/18/2020, 1367 influenza-associated hospitalizations and 47 influenza-associated deaths including 1 pediatric death were reported. The proportion of emergency room (ER) and urgent care clinic visits for ILI was 2.9% in week 16 which was lower than week 15 (3.3%). Approximately 45.0% of area ER and urgent care clinic visits for ILI were made by adults 18 - 44 years of age. Influenza A has become the dominant type circulating. Southern Nevada Health District will continue to update the public on the progression of the influenza season and encourage influenza vaccination for all persons 6 months of age and older without contraindications.

Table 1: Influenza Report by Age Group, Clark County, NV (CDC Week 40, 2019 to Week 16, 2020)

Age Group	Deaths	Hospitalized
0-4	1	118
05-17	0	79
18-24	0	41
25-49	2	290
50-64	14	343
65+	30	496
Total Cases	47	1367

Figure 1: Percent of Clark County Deaths Registered with Pneumonia and/or Influenza (P&I) by Week

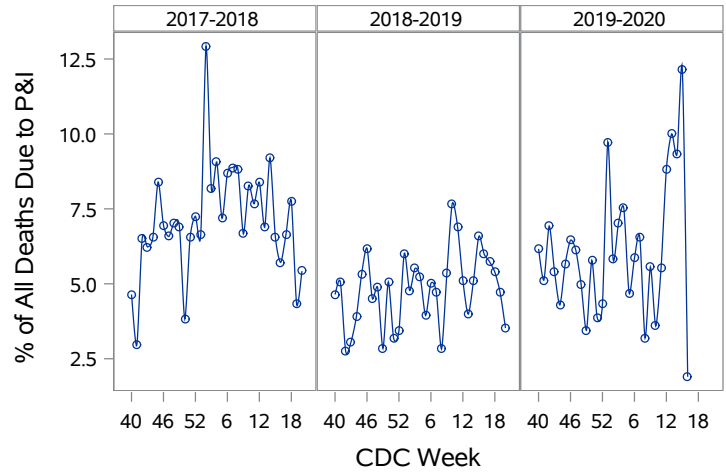


Table 2: Influenza Report by Virus Strain, Clark County, NV (CDC Week 40, 2019 to Week 16, 2020)

Influenza Type	Deaths	Hospitalized
A (2009 H1N1)	6	126
A (RIDT)	7	195
A (not sub-typed)	23	665
Influenza (unknown type, RIDT)	0	1
A (seasonal H3)	1	5
B (RIDT)	0	89
B (non-RIDT)	10	286
Total Cases	47	1367

Figure 2: Distribution of Confirmed Cases* by Virus Strain, Clark County, NV

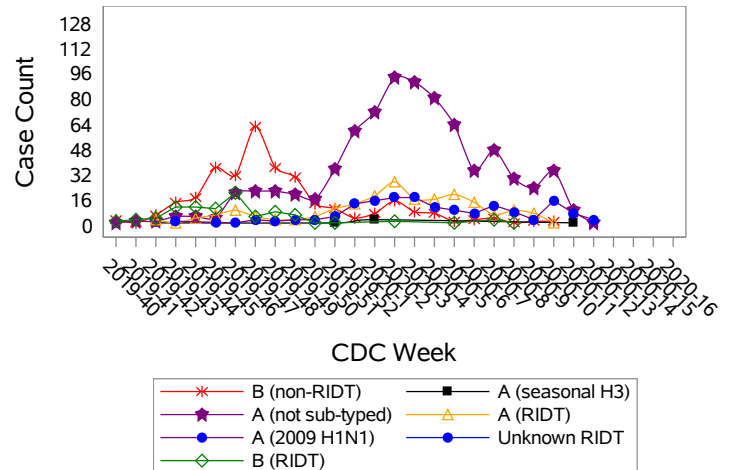


Figure 3: Weekly Proportion of Emergency Room and Urgent Care Clinic Visits for Influenza-Like Illness, Clark County, NV

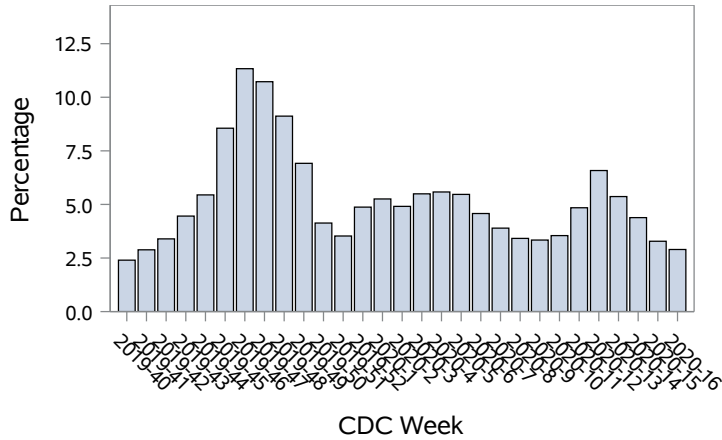


Figure 4: Age Distribution of Emergency Room and Urgent Care Clinic Visits for Influenza-Like Illness, Clark County, NV

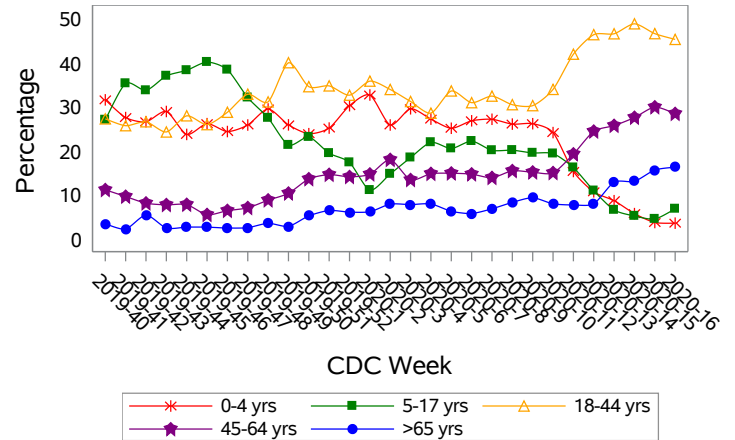


Figure 5: Seasonal Trends of Confirmed Cases of Influenza, Clark County, NV

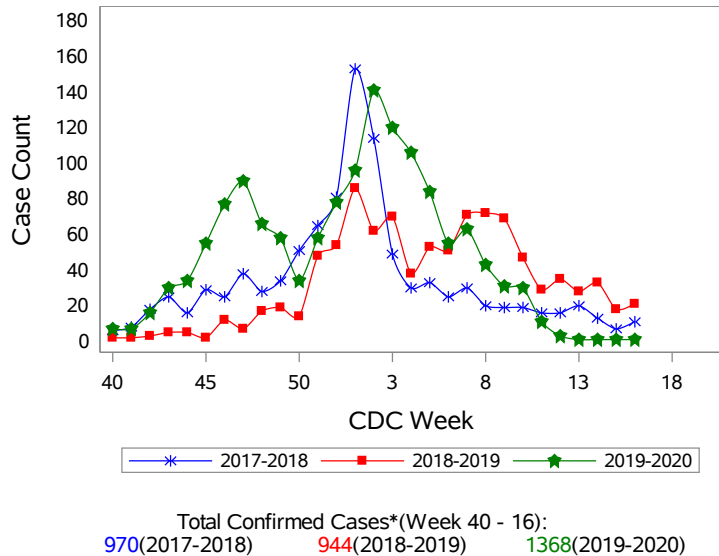
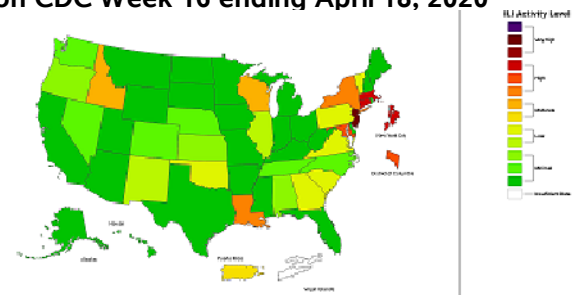


Figure 6: National ILI Activity Level- 2019-2020 Influenza Season CDC Week 16 ending April 18, 2020



*Confirmed Cases= Laboratory confirmed by PCR, culture, immunofluorescent antibody staining (direct or indirect), IHC antigen staining, rapid influenza diagnostic tests (RIDTs) with hospitalizations for 24 hours or longer, or RIDTs with death. This weekly report is only a reflection of the hospitalized cases and deaths reported for the current influenza season (Table 1 and Table 2). Number of total confirmed cases in Figure 5 includes number of hospitalization, deaths with hospitalization and deaths without hospitalization.

Note: The total number of confirmed cases presented in this report is subject to changes due to possible delays in reporting and processing. For additional information regarding SNHD influenza surveillance, please visit us at <http://southernnevadahealthdistrict.org/stats-reports/influenza-surveillance.php>.

Office of Epidemiology and Disease Surveillance (OEDS)
 Zuwen Qiu-Shultz, MPH, CPH, Epidemiologist