



## Southern Nevada Weekly Influenza Surveillance Snapshot CDC Week 12, March 15, 2020 to March 21, 2020

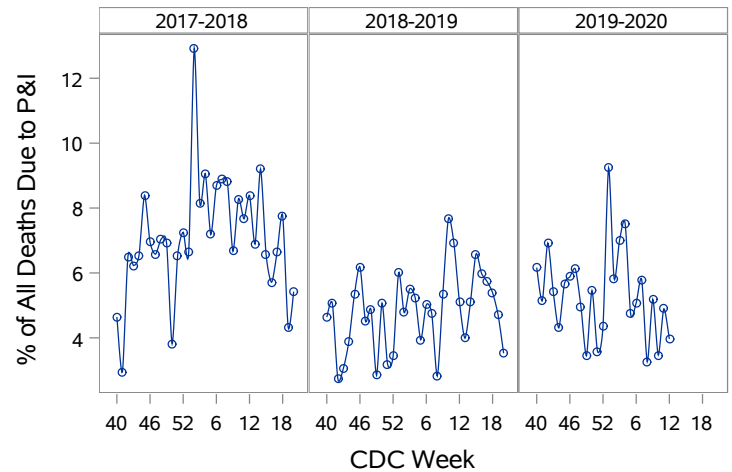
### Summary:

Influenza surveillance for Clark County, Nevada includes data collected from local acute care hospitals and other healthcare providers. Influenza activity as reported by clinical laboratories in the United States continued to decrease but Influenza-Like Illness (ILI) activity was increasing. During week 12, in the state of Nevada, ILI activity was moderate but widespread. In Clark County, for the season, as of 3/21/2020, 1358 influenza-associated hospitalizations and 43 influenza-associated deaths including 1 pediatric death were reported. The proportion of emergency room (ER) and urgent care clinic visits for ILI was 6.6% in week 12 which was higher than week 11 (4.8%). Approximately 46.2% of area ER and urgent care clinic visits for ILI were made by adults 18 - 44 years of age. Influenza A has become the dominant type circulating. Southern Nevada Health District will continue to update the public on the progression of the influenza season and encourage influenza vaccination for all persons 6 months of age and older without contraindications.

**Table 1: Influenza Report by Age Group, Clark County, NV (CDC Week 40, 2019 to Week 12, 2020)**

Age Group	Deaths	Hospitalized
0-4	1	117
05-17	0	78
18-24	0	41
25-49	2	288
50-64	13	340
65+	27	493
Age Unknown	0	1
<b>Total Cases</b>	<b>43</b>	<b>1358</b>

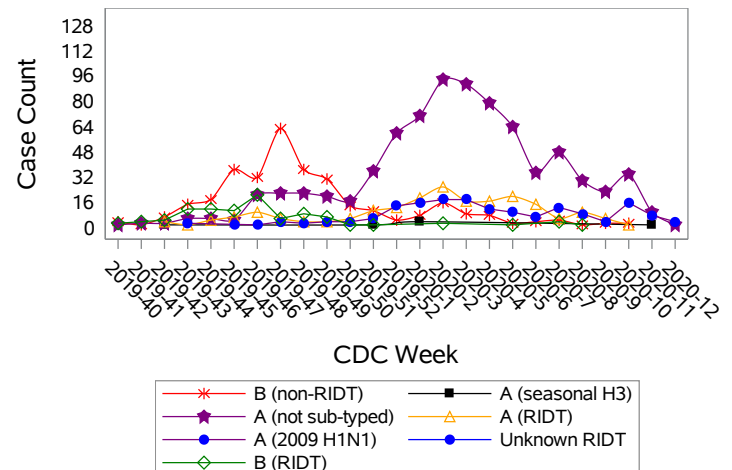
**Figure 1: Percent of Clark County Deaths Registered with Pneumonia and/or Influenza by Week**



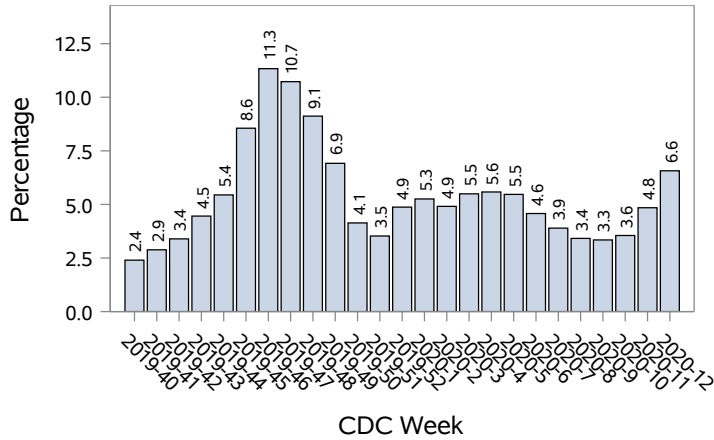
**Table 2: Influenza Report by Virus Strain, Clark County, NV (CDC Week 40, 2019 to Week 12, 2020)**

Influenza Type	Deaths	Hospitalized
A (2009 H1N1)	5	125
A (RIDT)	7	189
A (not sub-typed)	20	663
A (unknown type, RIDT)	0	1
A (seasonal H3)	1	5
B (RIDT)	0	89
B (non-RIDT)	10	286
<b>Total Cases</b>	<b>43</b>	<b>1358</b>

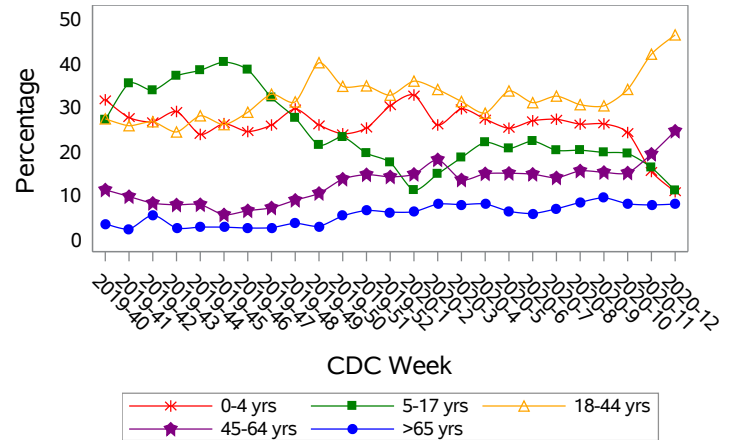
**Figure 2: Distribution of Confirmed Cases\* by Virus Strain, Clark County, NV**



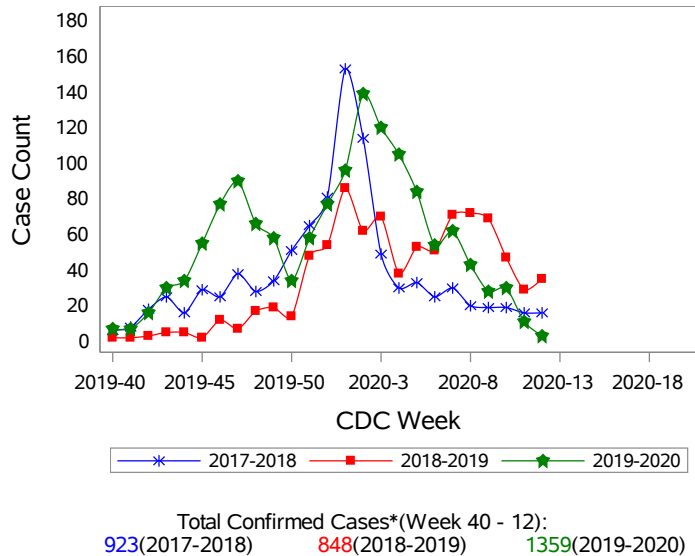
**Figure 3: Weekly Proportion of Emergency Room and Urgent Care Clinic Visits for Influenza-Like Illness, Clark County, NV**



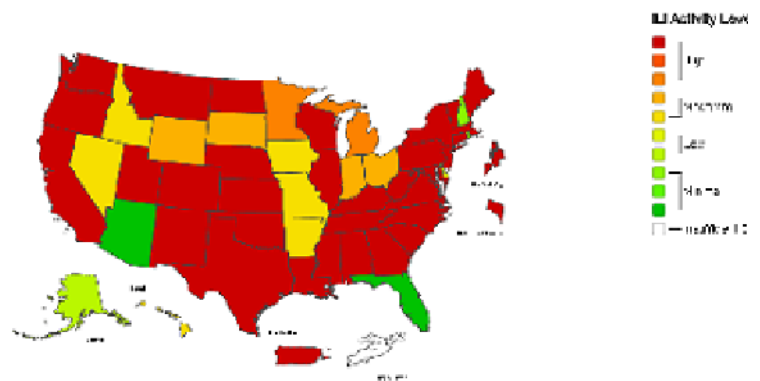
**Figure 4: Age Distribution of Emergency Room and Urgent Care Clinic Visits for Influenza-Like Illness, Clark County, NV**



**Figure 5: Seasonal Trends of Confirmed Cases of Influenza, Clark County, NV**



**Figure 6: National ILI Activity Level- 2019-2020 Influenza Season CDC Week 12 ending March 21, 2020**



\*Confirmed Cases= Laboratory confirmed by PCR, culture, immunofluorescent antibody staining (direct or indirect), IHC antigen staining, rapid influenza diagnostic tests (RIDTs) with hospitalizations for 24 hours or longer, or RIDTs with death. This weekly report is only a reflection of the hospitalized cases and deaths reported for the current influenza season (Table 1 and Table 2). Number of total confirmed cases in Figure 5 includes number of hospitalization, deaths with hospitalization and deaths without hospitalization.

Note: The total number of confirmed cases presented in this report is subject to changes due to possible delays in reporting and processing. For additional information regarding SNHD influenza surveillance, please visit us at <http://southernnevadahealthdistrict.org/stats-reports/influenza-surveillance.php>.

Office of Epidemiology and Disease Surveillance (OEDS)  
 Zuwen Qiu-Shultz, MPH, CPH, Epidemiologist