



Southern Nevada Weekly Influenza Surveillance Snapshot CDC Week 5, January 26, 2020 to February 1, 2020

Summary:

Influenza surveillance for Clark County, Nevada includes data collected from local acute care hospitals and other healthcare providers. Influenza activity in the United States declined in the first two weeks of the year but increased over the last three weeks. During week 5, in the state of Nevada, Influenza-Like Illness (ILI) activity was moderate and widespread. In Clark County, for the season, as of 2/1/2020, 1033 influenza-associated hospitalizations and 24 influenza-associated deaths including two pediatric death were reported. The proportion of emergency room (ER) and urgent care clinic visits for ILI was 5.5% in week 5 which was similar to week 4 (5.6%). Approximately 45.5% of area ER and urgent care clinic visits for ILI were made by children under 18 years of age. Influenza A has become the dominant type circulating. Southern Nevada Health District will continue to update the public on the progression of the influenza season and encourage influenza vaccination for all persons 6 months of age and older without contraindications.

Table 1: Influenza Report by Age Group, Clark County, NV (CDC Week 40, 2019 to Week 5, 2020)

Age Group	Deaths	Hospitalized
0-4	2	100
05-17	0	69
18-24	0	34
25-49	0	226
50-64	6	246
65+	16	358
Total Cases	24	1033

Figure 1: Percent of Clark County Deaths Registered with Pneumonia and/or Influenza by Week

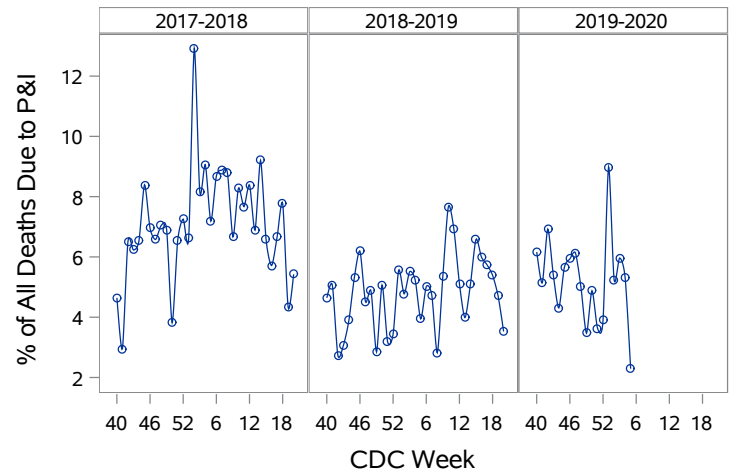


Table 2: Influenza Report by Virus Strain, Clark County, NV (CDC Week 40, 2019 to Week 5, 2020)

Influenza Type	Deaths	Hospitalized
A (2009 H1N1)	0	79
A (RIDT)	4	130
A (not sub-typed)	8	460
Influenza (unknown type, RIDT)	0	1
A (seasonal H3)	2	5
B (RIDT)	0	84
B (non-RIDT)	10	274
Total Cases	24	1033

Figure 2: Distribution of Confirmed Cases* by Virus Strain, Clark County, NV

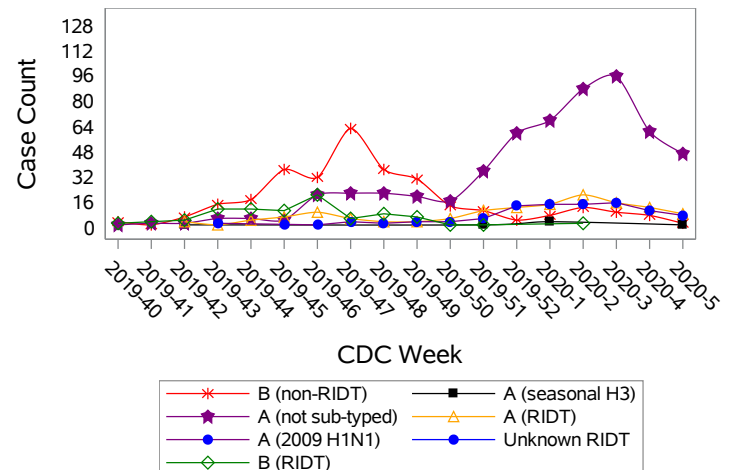


Figure 3: Weekly Proportion of Emergency Room and Urgent Care Clinic Visits for Influenza-Like Illness, Clark County, NV

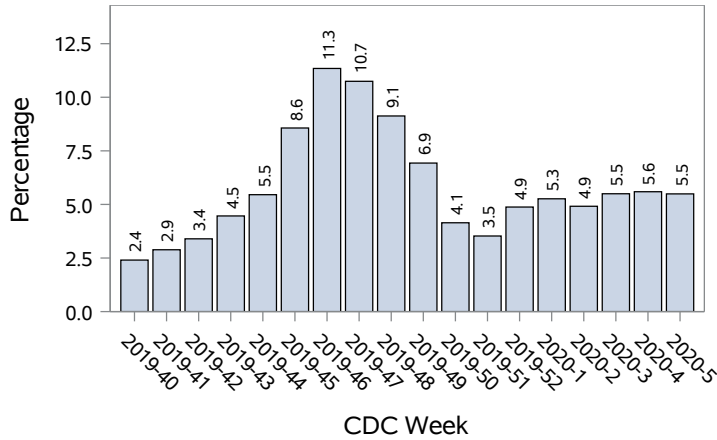


Figure 4: Age Distribution of Emergency Room and Urgent Care Clinic Visits for Influenza-Like Illness, Clark County, NV

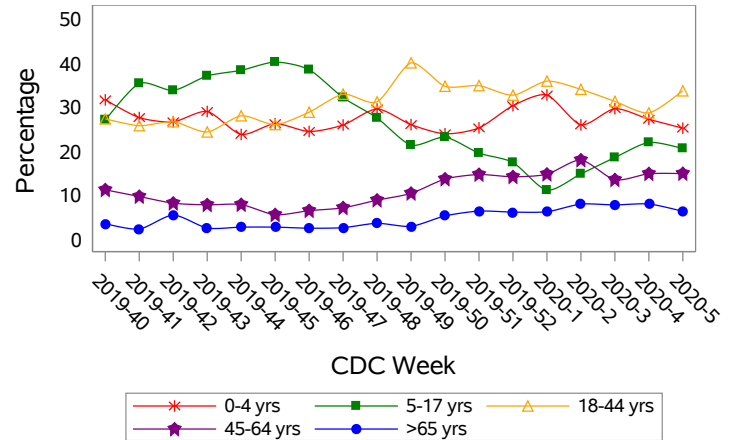


Figure 5: Seasonal Trends of Confirmed Cases of Influenza, Clark County, NV

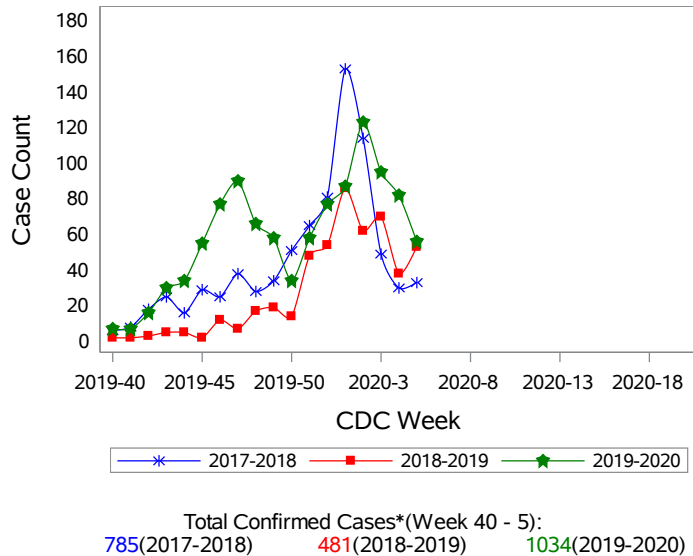
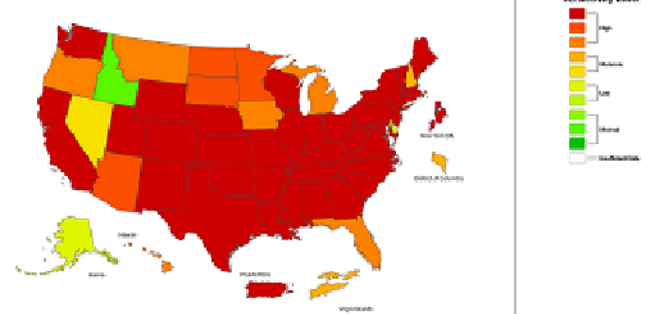


Figure 6: National ILI Activity Level- 2019-2020 Influenza Season CDC Week 5 ending February 1, 2020



*Confirmed Cases= Laboratory confirmed by PCR, culture, immunofluorescent antibody staining (direct or indirect), IHC antigen staining, rapid influenza diagnostic tests (RIDTs) with hospitalizations for 24 hours or longer, or RIDTs with death. This weekly report is only a reflection of the hospitalized cases and deaths reported for the current influenza season (Table 1 and Table 2). Number of total confirmed cases in Figure 5 includes number of hospitalization, deaths with hospitalization and deaths without hospitalization.

Note: The total number of confirmed cases presented in this report is subject to changes due to possible delays in reporting and processing. For additional information regarding SNHD influenza surveillance, please visit us at <http://southernnevadahealthdistrict.org/stats-reports/influenza-surveillance.php>.

Office of Epidemiology and Disease Surveillance (OEDS)
 Zuwen Qiu-Shultz, MPH, CPH, Epidemiologist