



Southern Nevada Weekly Influenza Surveillance Snapshot CDC Week 4, January 19, 2020 to January 25, 2020

Summary:

Influenza surveillance for Clark County, Nevada includes data collected from local acute care hospitals and other healthcare providers. Influenza activity in the United States declined in the first two weeks of the year but increased over the last two weeks. During week 4, in the state of Nevada, Influenza-Like Illness (ILI) activity was moderate and widespread. In Clark County, for the season, as of 1/25/2020, 828 influenza-associated hospitalizations and 13 influenza-associated deaths including one pediatric death were reported. The proportion of emergency room (ER) and urgent care clinic visits for ILI was 5.6% in week 4 which was similar to week 3 (5.5%). Approximately 48.8% of area ER and urgent care clinic visits for ILI were made by children under 18 years of age. Influenza A has become the dominant type circulating. Southern Nevada Health District will continue to update the public on the progression of the influenza season and encourage influenza vaccination for all persons 6 months of age and older without contraindications.

Table 1: Influenza Report by Age Group, Clark County, NV (CDC Week 40, 2019 to Week 4, 2020)

Age Group	Deaths	Hospitalized
0-4	1	78
05-17	0	61
18-24	0	33
25-49	0	185
50-64	3	191
65+	9	280
Total Cases	13	828

Figure 1: Percent of Clark County Deaths Registered with Pneumonia and/or Influenza by Week

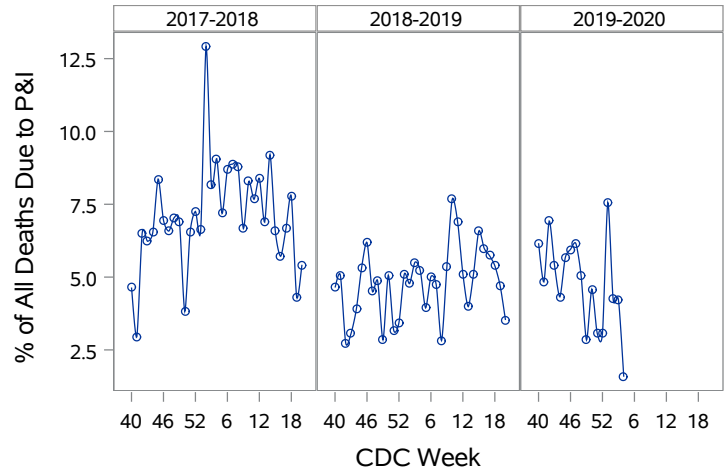


Table 2: Influenza Report by Virus Strain, Clark County, NV (CDC Week 40, 2019 to Week 4, 2020)

Influenza Type	Deaths	Hospitalized
A (2009 H1N1)	0	57
A (RIDT)	4	101
A (not sub-typed)	2	321
Influenza (unknown type, RIDT)	0	1
A (seasonal H3)	1	5
B (RIDT)	0	84
B (non-RIDT)	6	259
Total Cases	13	828

Figure 2: Distribution of Confirmed Cases* by Virus Strain, Clark County, NV

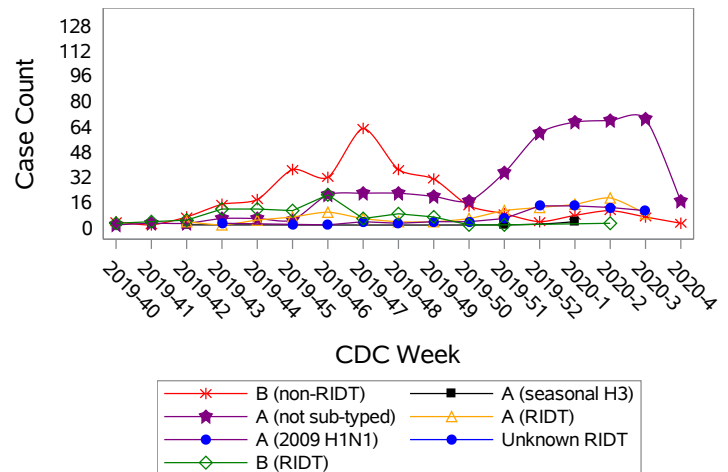


Figure 3: Weekly Proportion of Emergency Room and Urgent Care Clinic Visits for Influenza-Like Illness, Clark County, NV

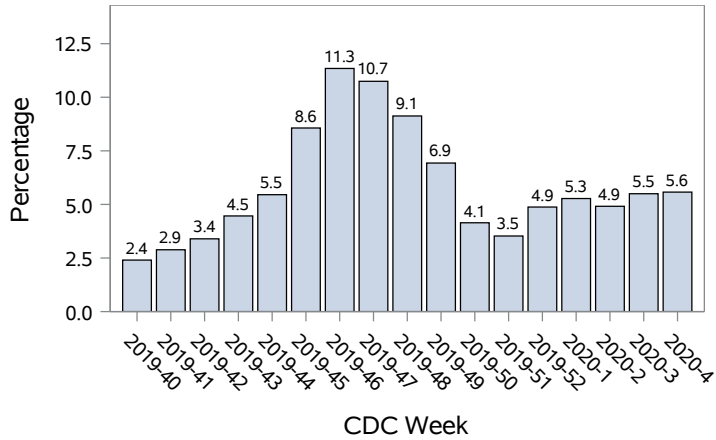


Figure 4: Age Distribution of Emergency Room and Urgent Care Clinic Visits for Influenza-Like Illness, Clark County, NV

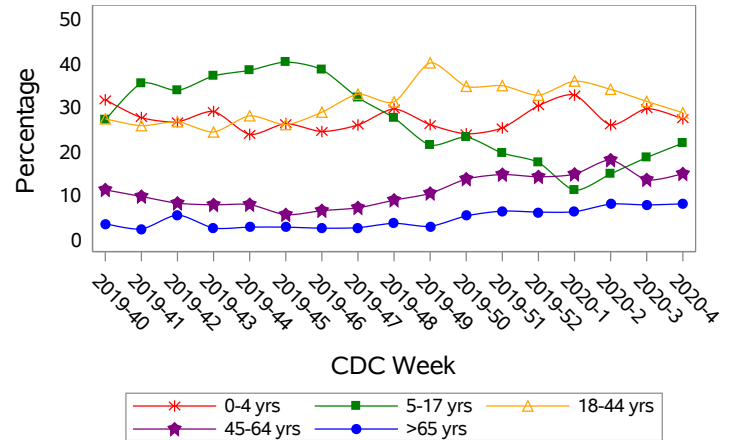
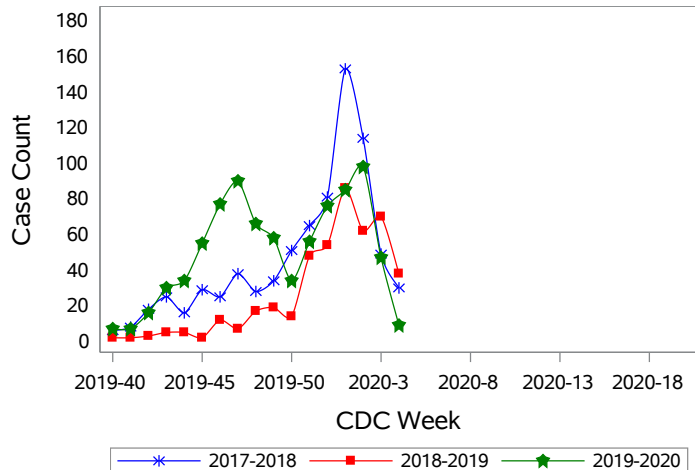
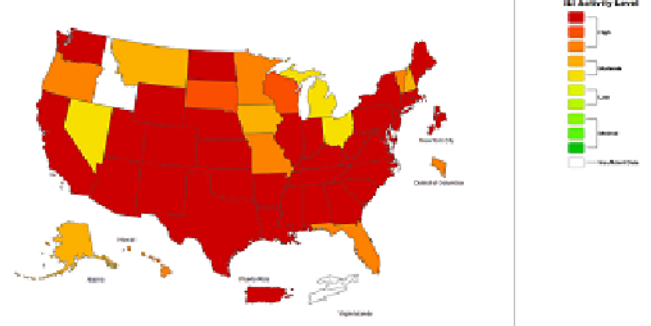


Figure 5: Seasonal Trends of Confirmed Cases of Influenza, Clark County, NV



Total Confirmed Cases*(Week 40 - 4):
 753(2017-2018) 429(2018-2019) 828(2019-2020)

Figure 6: National ILI Activity Level- 2019-2020 Influenza Season CDC Week 4 ending January 25, 2020



*Confirmed Cases= Laboratory confirmed by PCR, culture, immunofluorescent antibody staining (direct or indirect), IHC antigen staining, rapid influenza diagnostic tests (RIDTs) with hospitalizations for 24 hours or longer, or RIDTs with death. This weekly report is only a reflection of the hospitalized cases and deaths reported for the current influenza season.

Note: The total number of confirmed cases presented in this report is subject to changes due to possible delays in reporting and processing. For additional information regarding SNHD influenza surveillance, please visit us at <http://southernnevadahealthdistrict.org/stats-reports/influenza-surveillance.php>.

Office of Epidemiology and Disease Surveillance (OEDS)
 Zuwen Qiu-Shultz, MPH, CPH, Epidemiologist