



Southern Nevada Weekly Influenza Surveillance Snapshot CDC Week 3, January 12, 2020 to January 18, 2020

Summary:

Influenza surveillance for Clark County, Nevada includes data collected from local acute care hospitals and other healthcare providers. Influenza activity in the United States has declined in the first two weeks of the year but increased slightly this week. During week 3, in the state of Nevada, Influenza-Like Illness (ILI) activity was widespread but low. In Clark County, for the season, as of 1/18/2020, 820 influenza-associated hospitalizations and 11 influenza-associated deaths including one pediatric death were reported. The proportion of emergency room (ER) and urgent care clinic visits for ILI was 5.5% in week 3 which was higher than week 2 (4.9%). Approximately 47.9% of area ER and urgent care clinic visits for ILI were made by children under 18 years of age. Influenza A has become the dominant type circulating. Southern Nevada Health District will continue to update the public on the progression of the influenza season and encourage influenza vaccination for all persons 6 months of age and older without contraindications.

Table 1: Influenza Report by Age Group, Clark County, NV (CDC Week 40, 2019 to Week 3, 2020)

| Age Group | Deaths | Hospitalized |
|-------------|--------|--------------|
| 0-4 | 1 | 76 |
| 05-17 | 0 | 61 |
| 18-24 | 0 | 33 |
| 25-49 | 0 | 184 |
| 50-64 | 2 | 189 |
| 65+ | 8 | 277 |
| Total Cases | 11 | 820 |

Figure 1: Percent of Clark County Deaths Registered with Pneumonia and/or Influenza by Week

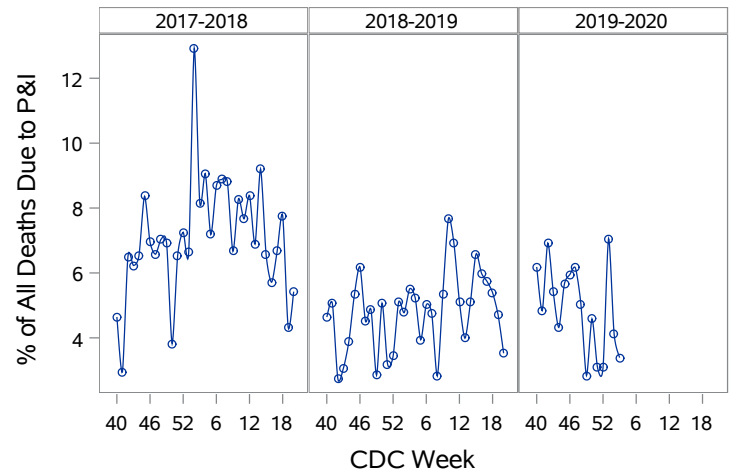


Table 2: Influenza Report by Virus Strain, Clark County, NV (CDC Week 40, 2019 to Week 3, 2020)

| Influenza Type | Deaths | Hospitalized |
|--------------------------------|--------|--------------|
| A (2009 H1N1) | 0 | 57 |
| A (RIDT) | 3 | 101 |
| A (not sub-typed) | 2 | 315 |
| Influenza (unknown type, RIDT) | 0 | 1 |
| A (seasonal H3) | 1 | 5 |
| B (RIDT) | 0 | 84 |
| B (non-RIDT) | 5 | 257 |
| Total Cases | 11 | 820 |

Figure 2: Distribution of Confirmed Cases* by Virus Strain, Clark County, NV

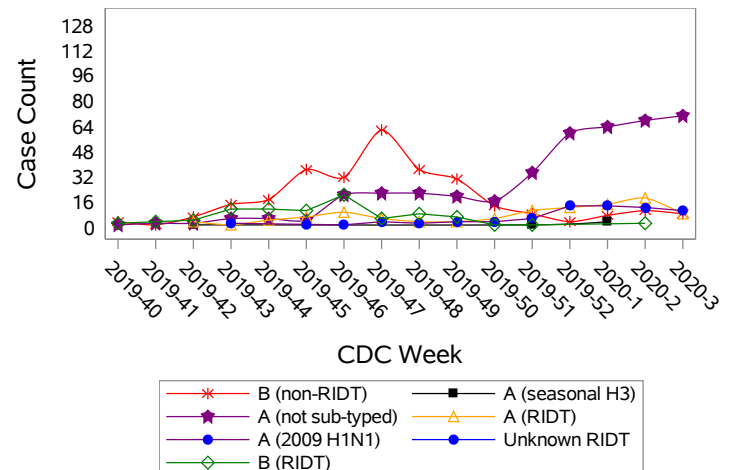


Figure 3: Weekly Proportion of Emergency Room and Urgent Care Clinic Visits for Influenza-Like Illness, Clark County, NV

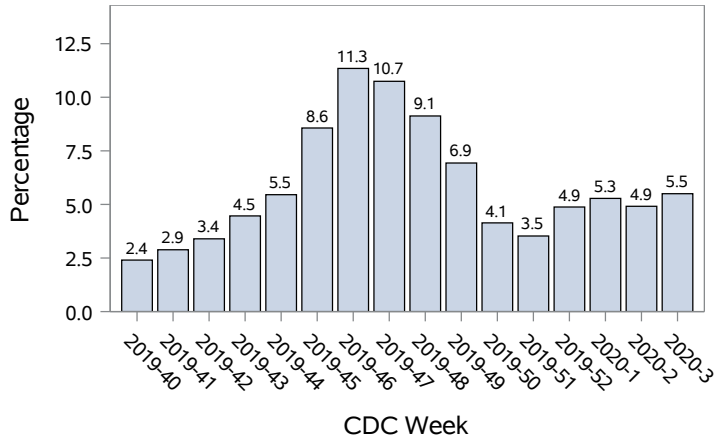


Figure 4: Age Distribution of Emergency Room and Urgent Care Clinic Visits for Influenza-Like Illness, Clark County, NV

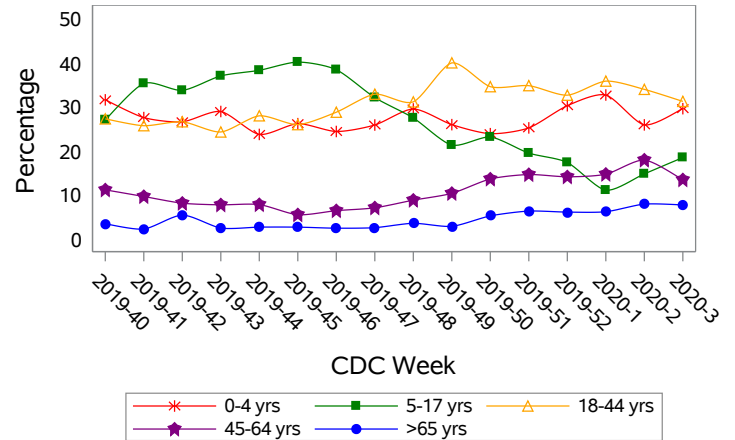


Figure 5: Seasonal Trends of Confirmed Cases of Influenza, Clark County, NV

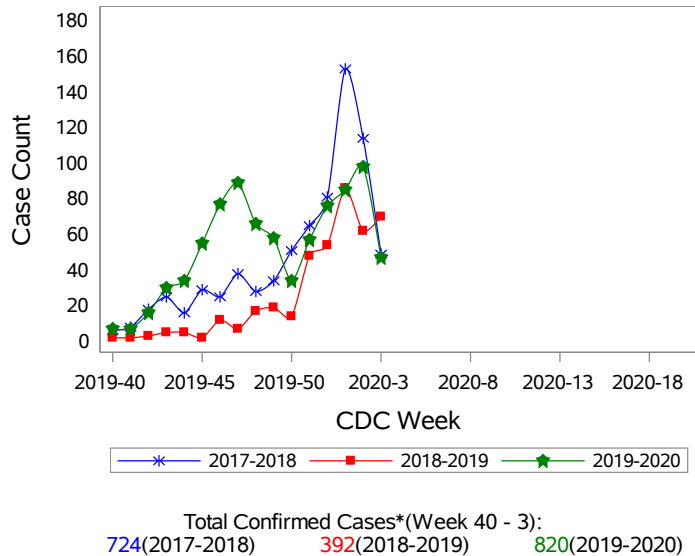
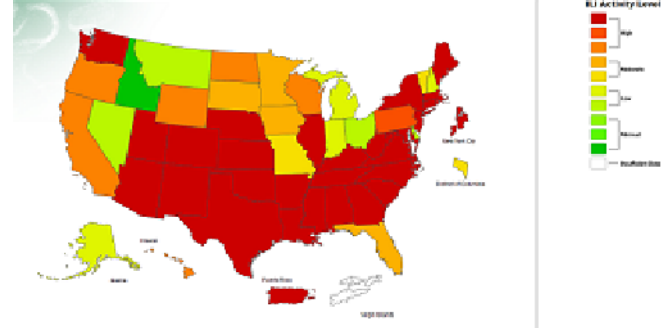


Figure 6: National ILI Activity Level- 2019-2020 Influenza Season CDC Week 3 ending January 18, 2020



*Confirmed Cases= Laboratory confirmed by PCR, culture, immunofluorescent antibody staining (direct or indirect), IHC antigen staining, rapid influenza diagnostic tests (RIDTs) with hospitalizations for 24 hours or longer, or RIDTs with death. This weekly report is only a reflection of the hospitalized cases and deaths reported for the current influenza season.

Note: The total number of confirmed cases presented in this report is subject to changes due to possible delays in reporting and processing. For additional information regarding SNHD influenza surveillance, please visit us at <http://southernnevadahealthdistrict.org/stats-reports/influenza-surveillance.php>.

Office of Epidemiology and Disease Surveillance (OEDS)
 Zuwen Qiu-Shultz, MPH, CPH, Epidemiologist