



## Southern Nevada Weekly Influenza Surveillance Snapshot CDC Week 20, May 12, 2019 to May 18, 2019

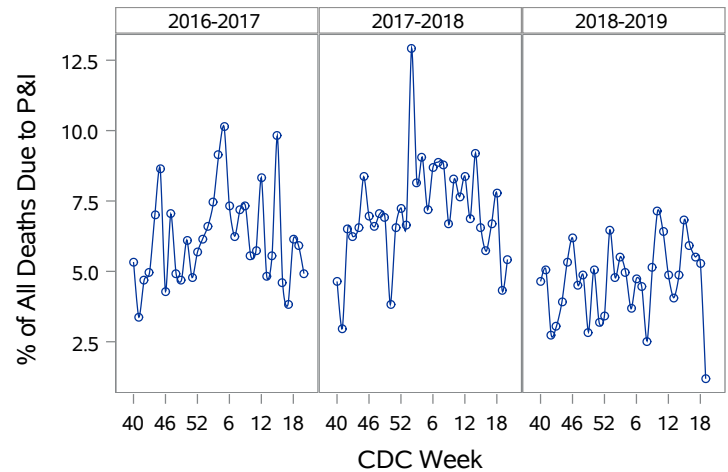
### Summary:

Influenza surveillance for Clark County, Nevada includes data collected from local acute care hospitals and other healthcare providers. Influenza activity remained low in the United States and was similar to last week. During week 20, in the state of Nevada, sporadic influenza activity and minimal Influenza-Like Illness (ILI) activity level were reported. In Clark County, for the season, as of 5/18/2019, 965 influenza-associated hospitalizations with 64% being persons 50 years of age or older, and 37 influenza-associated deaths including three deaths of children under age 18 were reported. The proportion of emergency room (ER) and urgent care clinic visits for ILI was 2.5% in week 20 which was slightly higher than week 19 (2.3%). Approximately 57% of area ER and urgent care clinic visits for ILI were made by children under 18 years of age. Influenza A was the dominant type circulating. Southern Nevada Health District will continue to update the public on the progression of the influenza season and encourage influenza vaccination for all persons 6 months of age and older.

**Table 1: Influenza Report by Age Group, Clark County, NV (CDC Week 40, 2018 to Week 20, 2019)**

Age Group	Deaths	Hospitalized
0-4	1	78
05-17	2	70
18-24	0	28
25-49	6	169
50-64	8	255
65+	20	365
Total Cases	37	965

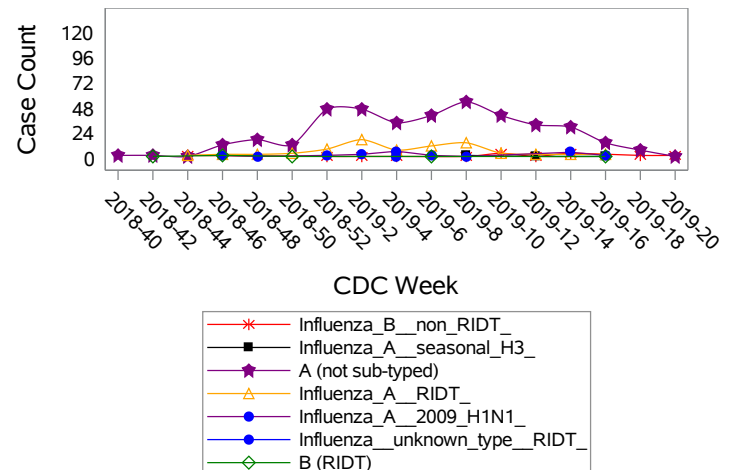
**Figure 1: Percent of Clark County Deaths Registered with Pneumonia and/or Influenza by Week**



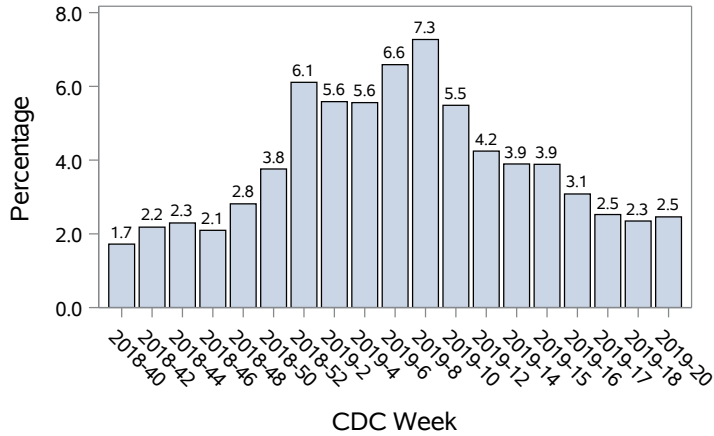
**Table 2: Influenza Report by Virus Strain, Clark County, NV (CDC Week 40, 2018 to Week 20, 2019)**

Influenza Type	Deaths	Hospitalized
A (2009 H1N1)	4	41
A (RIDT)	10	171
A (not sub-typed)	19	702
A (not sub-typed)	0	1
A (seasonal H3)	2	6
B (RIDT)	1	11
B (non-RIDT)	1	30
Total Cases	37	965

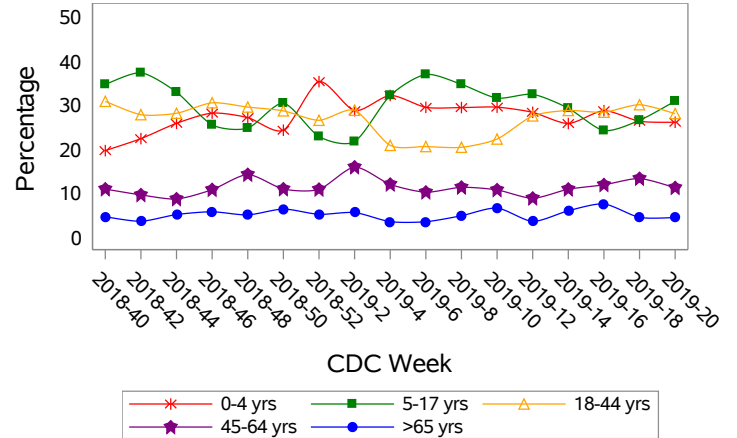
**Figure 2: Distribution of Confirmed Cases\* by Virus Strain, Clark County, NV**



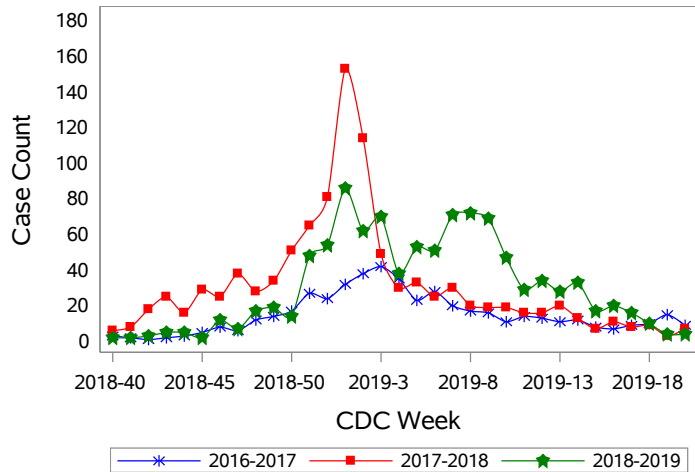
**Figure 3: Weekly Proportion of Emergency Room and Urgent Care Clinic Visits for Influenza-Like Illness, Clark County, NV**



**Figure 4: Age Distribution of Emergency Room and Urgent Care Clinic Visits for Influenza-Like Illness, Clark County, NV**

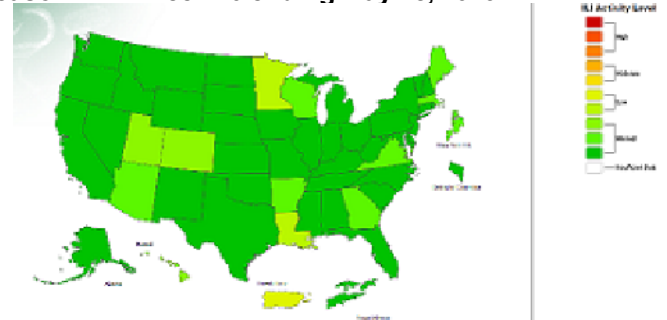


**Figure 5: Seasonal Trends of Confirmed Cases of Influenza, Clark County, NV**



Total Confirmed Cases\*(Week 40 - 20):  
 461 (2016-2017)    993 (2017-2018)    971 (2018-2019)

**Figure 6: National ILI Activity Level- 2018-2019 Influenza Season CDC Week 20 ending May 18, 2019**



\*Confirmed Cases= Laboratory confirmed by PCR, culture, immunofluorescent antibody staining (direct or indirect), IHC antigen staining, rapid influenza diagnostic tests (RIDTs) with hospitalizations for 24 hours or longer, or RIDTs with death. This weekly report is only a reflection of the hospitalized cases and deaths reported for the current influenza season.

Note: The total number of confirmed cases presented in this report is subject to changes due to possible delays in reporting and processing. For additional information regarding SNHD influenza surveillance, please visit us at <http://southernnevadahealthdistrict.org/stats-reports/influenza-surveillance.php>.

Office of Epidemiology and Disease Surveillance (OEDS)  
 Zuwen Qiu-Shultz, MPH, Epidemiologist