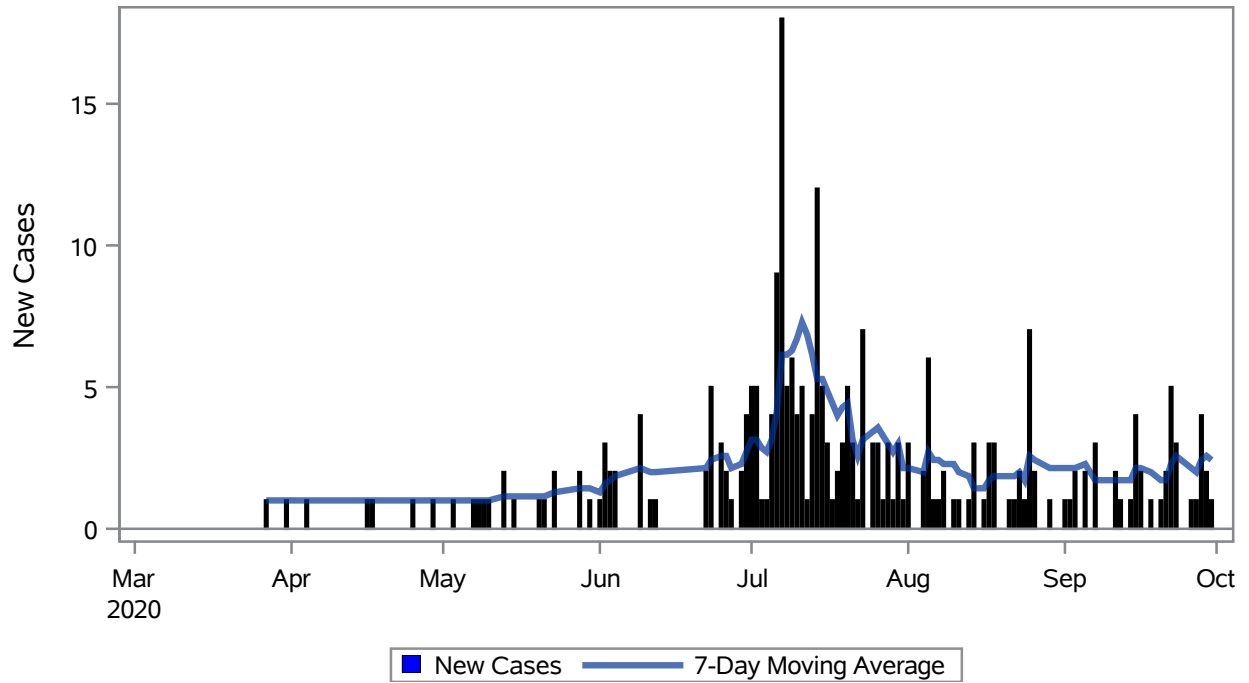


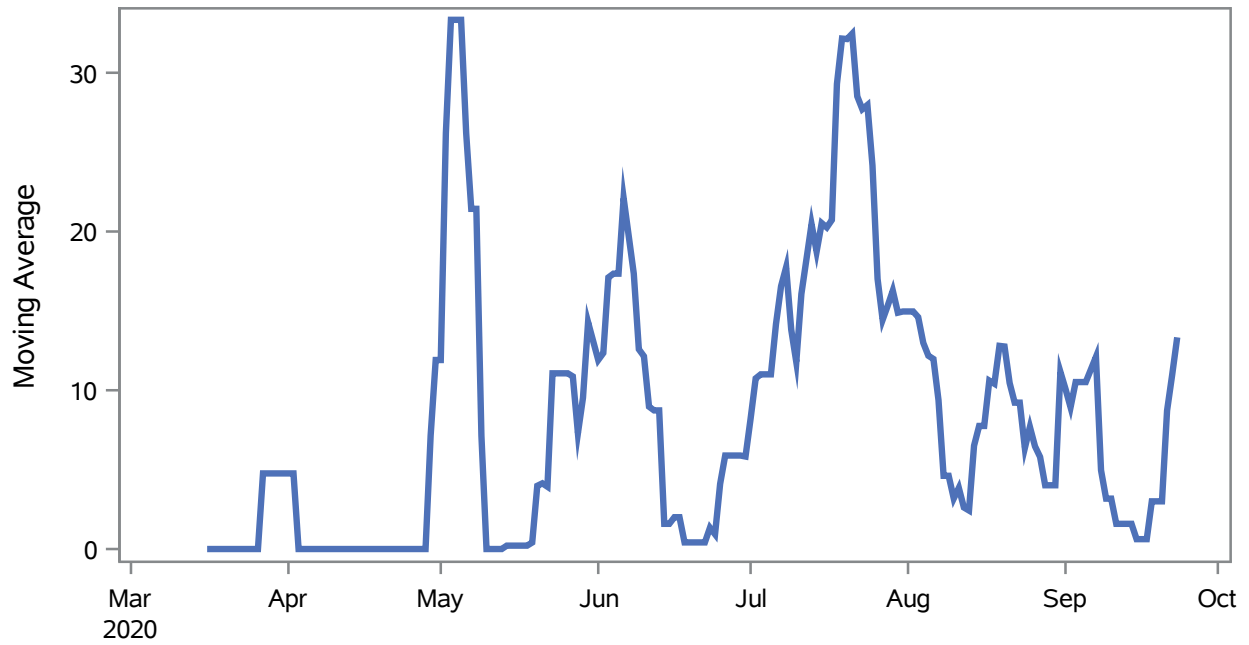
### COVID19 Cases for Mesquite, 7-Day Moving Average



Investigations are ongoing; data are subject to change.  
Reporting through 30SEP2020

Mesquite zip codes include 89027. The U.S. Census Bureau data uses Zip Code Tabulation Area (ZCTA), which does not list 89034 but has incorporated areas of 89034 within 89027 through the American Community Survey (ACS) 5-Year Estimates.

## Percent of People Receiving COVID-19 Viral Tests Who Have Positive Results in Mesquite



Investigations are ongoing; data are subject to change.  
Reporting through 30SEP2020

Mesquite zip codes include 89027. The U.S. Census Bureau data uses Zip Code Tabulation Area (ZCTA), which does not list 89034 but has incorporated areas of 89034 within 89027 through the American Community Survey (ACS) 5-Year Estimates.

**Table 1: Age and COVID19 in Mesquite**

Case Status	Age Categories	N	%	Population	Rate per 100,000
Cases	Aged 4 or less	2	0.8	702	--
	Aged 5 to 17	9	3.5	2,217	--
	Aged 18 to 24	28	10.9	938	2985.1
	Aged 25 to 49	89	34.5	3,386	2628.5
	Aged 50 to 64	62	24.0	3,371	1839.2
	Aged 64+	68	26.4	7,290	932.78
Hospitalizations	Aged 25 to 49	4	16.0	3,386	--
	Aged 50 to 64	7	28.0	3,371	--
	Aged 64+	14	56.0	7,290	192.04
Deaths	Aged 64+	3	100	7,290	--

Note1: Population data source for calculating rate estimates: U.S. Census Bureau, ACS 5-year estimate.

Note2: Rates for categories with fewer than 12 cases are suppressed due to high relative standard error.

Note3: Hospitalizations are regardless of deceased status; Deaths are regardless of hospitalization status

**Investigations are ongoing; data are subject to change.  
Reporting through 30SEP2020**

**Mesquite zip codes include 89027. The U.S. Census Bureau data uses Zip Code Tabulation Area (ZCTA), which does not list 89034 but has incorporated areas of 89034 within 89027 through the American Community Survey (ACS) 5-Year Estimates.**

**Table 2: Race/Ethnicity and COVID19 in Mesquite**

Case Status	Race Ethnicity Categories	N	%	Population	Rate per 100,000
Cases	Hispanic	133	51.6	3,738	3558.1
	White	93	36.0	13,120	708.84
	American Indian/Alaskan Native	--	0.4	95	--
	Native Hawaiian/Pacific Islander	--	1.2	30	--
	Unknown	28	10.9	.	.
Hospitalizations	Hispanic	12	48.0	3,738	321.03
	White	11	44.0	13,120	--
	Native Hawaiian/Pacific Islander	--	4.0	30	--
	Unknown	1	4.0	.	.
Deaths	White	3	100	13,120	--

Note1: Population data source for calculating rate estimates: U.S. Census Bureau, ACS 5-year estimate.

Note2: Rates for categories with fewer than 12 cases are suppressed due to high relative standard error. Counts for categories with population less than 500 are suppressed for confidentiality.

Note3: Due to suppression, the total counts per case status may not equal expected totals.

Note4: Hospitalizations are regardless of deceased status; Deaths are regardless of hospitalization status

**Investigations are ongoing; data are subject to change.  
Reporting through 30SEP2020**

**Mesquite zip codes include 89027. The U.S. Census Bureau data uses Zip Code Tabulation Area (ZCTA), which does not list 89034 but has incorporated areas of 89034 within 89027 through the American Community Survey (ACS) 5-Year Estimates.**

**Table 3: Birth Sex and COVID19 in Mesquite**

Case Status	Birth Sex Categories	N	%	Population	Rate per 100,000
Cases	Female	155	60.1	9,111	1701.2
	Male	101	39.1	8,793	1148.6
	Unknown	2	0.8	.	.
Hospitalizations	Female	15	60.0	9,111	164.64
	Male	10	40.0	8,793	--
Deaths	Male	3	100	8,793	--

Note1: Population data source for calculating rate estimates: U.S. Census Bureau, ACS 5-year estimate.

Note2: Rates for categories with fewer than 12 cases are suppressed due to high relative standard error. Counts for categories with population less than 500 are suppressed for confidentiality.

Note3: Hospitalizations are regardless of deceased status; Deaths are regardless of hospitalization status

**Investigations are ongoing; data are subject to change.  
Reporting through 30SEP2020**

**Mesquite zip codes include 89027. The U.S. Census Bureau data uses Zip Code Tabulation Area (ZCTA), which does not list 89034 but has incorporated areas of 89034 within 89027 through the American Community Survey (ACS) 5-Year Estimates.**