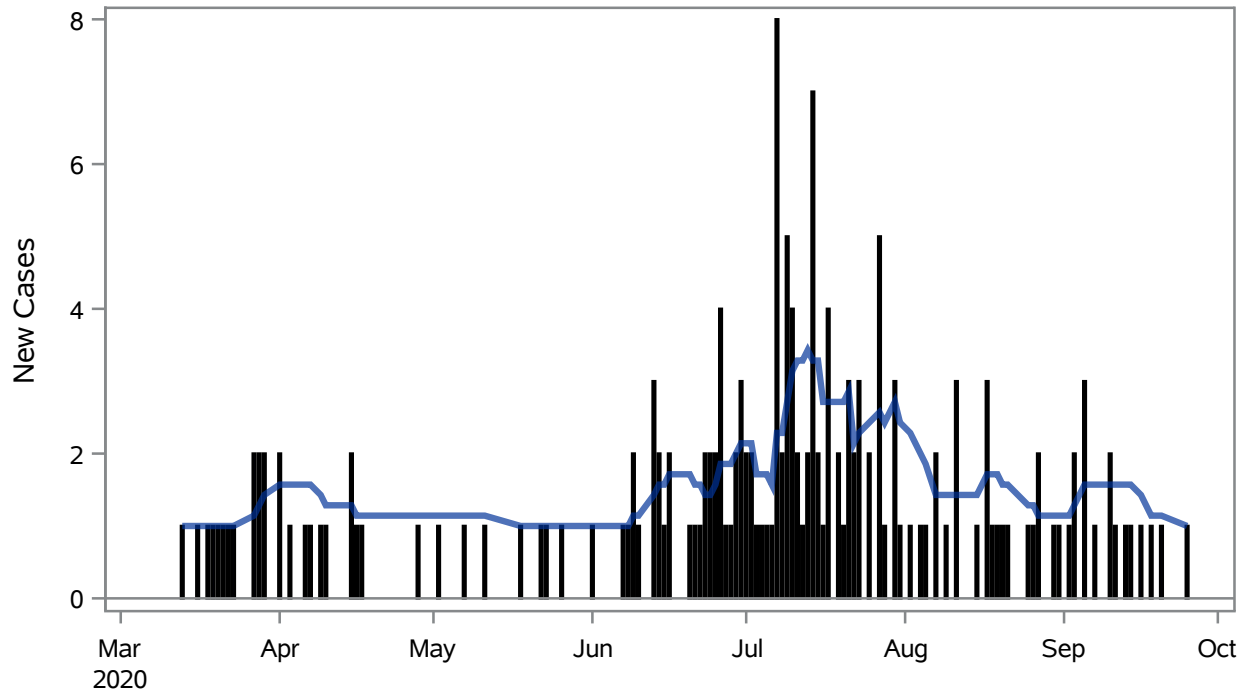


### COVID19 Cases for Boulder City, 7-Day Moving Average



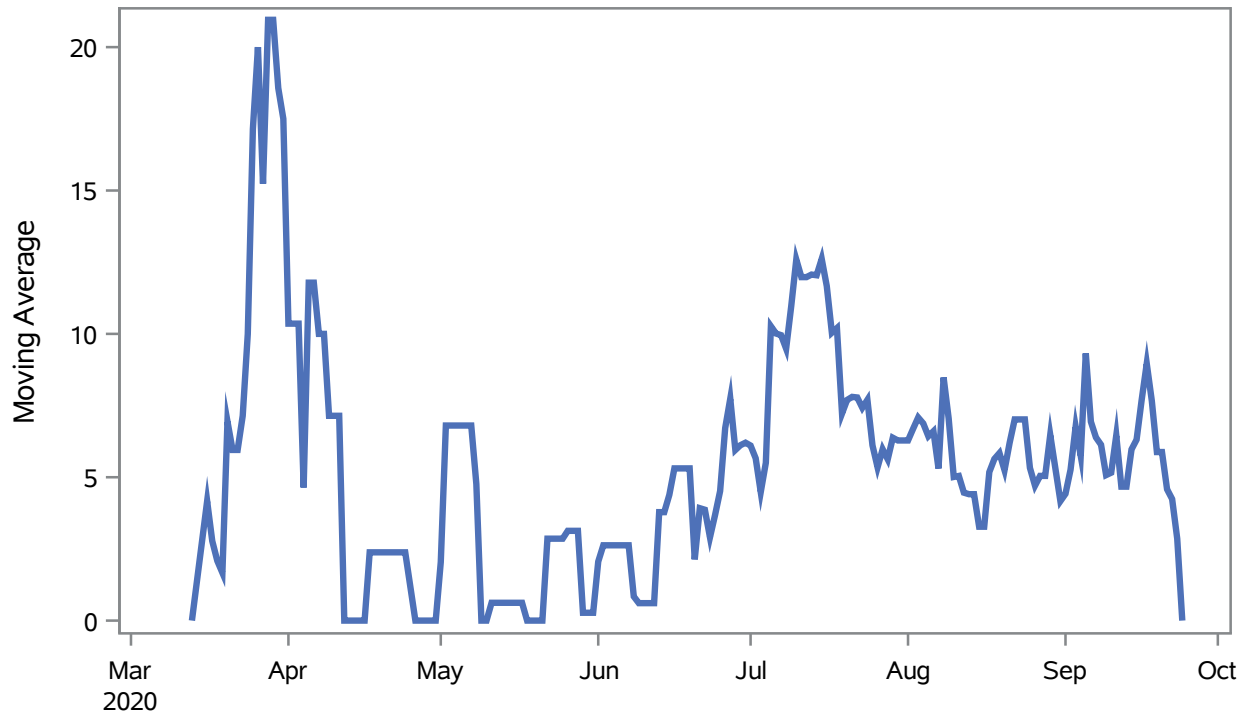
■ New Cases      — 7-Day Moving Average

Investigations are ongoing; data are subject to change.

Reporting through 30SEP2020

Boulder City zip codes include 89005.

### Percent of People Receiving COVID-19 Viral Tests Who Have Positive Results in Boulder City



Investigations are ongoing; data are subject to change.

Reporting through 30SEP2020

Boulder City zip codes include 89005.

**Table 1: Age and COVID19 in Boulder City**

Case Status	Age Categories	N	%	Population	Rate per 100,000
Cases	Aged 4 or less	5	2.9	659	--
	Aged 5 to 17	6	3.4	2,123	--
	Aged 18 to 24	11	6.3	921	--
	Aged 25 to 49	62	35.6	3,509	1766.9
	Aged 50 to 64	41	23.6	3,701	1107.8
	Aged 64+	49	28.2	4,767	1027.9
Hospitalizations	Aged 25 to 49	1	4.5	3,509	--
	Aged 50 to 64	5	22.7	3,701	--
	Aged 64+	16	72.7	4,767	335.64
Deaths	Aged 64+	9	100	4,767	--

Note1: Population data source for calculating rate estimates: U.S. Census Bureau, ACS 5-year estimate.

Note2: Rates for categories with fewer than 12 cases are suppressed due to high relative standard error.

Note3: Hospitalizations are regardless of deceased status; Deaths are regardless of hospitalization status

**Investigations are ongoing; data are subject to change.  
Reporting through 30SEP2020  
Boulder City zip codes include 89005.**

**Table 2: Race/Ethnicity and COVID19 in Boulder City**

Case Status	Race Ethnicity Categories	N	%	Population	Rate per 100,000
Cases	Hispanic	18	10.3	1,164	1546.4
	White	124	71.3	13,569	913.85
	Asian	--	1.1	199	--
	American Indian/Alaskan Native	--	0.6	140	--
	Unknown	29	16.7	.	.
Hospitalizations	White	19	86.4	13,569	140.03
	Unknown	3	13.6	.	.
Deaths	White	9	100	13,569	--

Note1: Population data source for calculating rate estimates: U.S. Census Bureau, ACS 5-year estimate.

Note2: Rates for categories with fewer than 12 cases are suppressed due to high relative standard error. Counts for categories with population less than 500 are suppressed for confidentiality.

Note3: Due to suppression, the total counts per case status may not equal expected totals.

Note4: Hospitalizations are regardless of deceased status; Deaths are regardless of hospitalization status

**Investigations are ongoing; data are subject to change.  
Reporting through 30SEP2020  
Boulder City zip codes include 89005.**