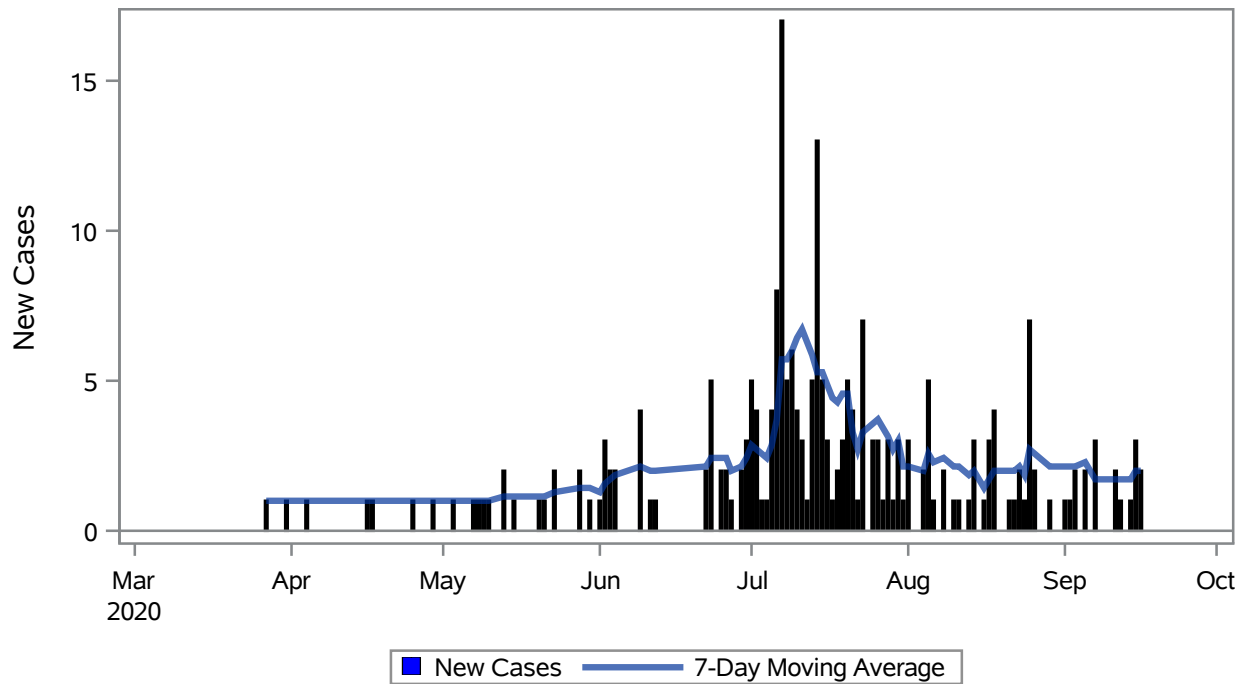


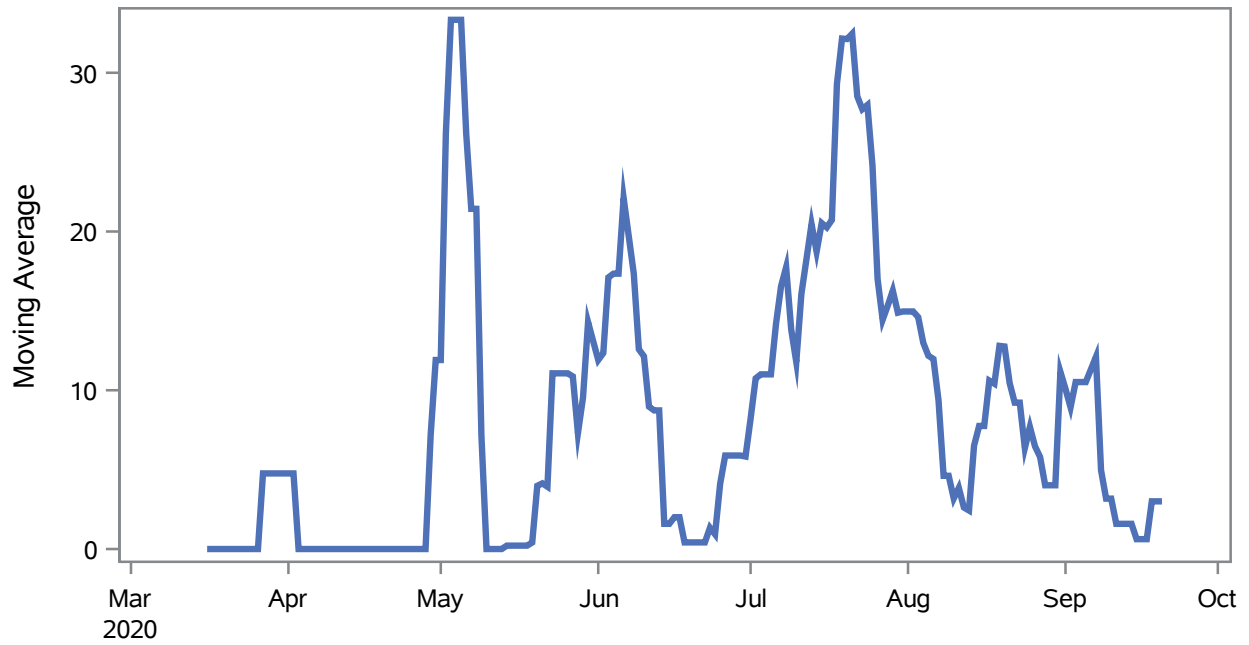
COVID19 Cases for Mesquite, 7-Day Moving Average



Investigations are ongoing; data are subject to change.
Reporting through 23SEP2020

Mesquite zip codes include 89027. The U.S. Census Bureau data uses Zip Code Tabulation Area (ZCTA), which does not list 89034 but has incorporated areas of 89034 within 89027 through the American Community Survey (ACS) 5-Year Estimates.

Percent of People Receiving COVID-19 Viral Tests Who Have Positive Results in Mesquite



Investigations are ongoing; data are subject to change.
Reporting through 23SEP2020

Mesquite zip codes include 89027. The U.S. Census Bureau data uses Zip Code Tabulation Area (ZCTA), which does not list 89034 but has incorporated areas of 89034 within 89027 through the American Community Survey (ACS) 5-Year Estimates.

Table 1: Age and COVID19 in Mesquite

Case Status	Age Categories	N	%	Population	Rate per 100,000
Cases	Aged 4 or less	1	0.4	702	--
	Aged 5 to 17	8	3.4	2,217	--
	Aged 18 to 24	27	11.6	938	2878.5
	Aged 25 to 49	84	36.2	3,386	2480.8
	Aged 50 to 64	59	25.4	3,371	1750.2
	Aged 64+	53	22.8	7,290	727.02
Hospitalizations	Aged 25 to 49	4	20.0	3,386	--
	Aged 50 to 64	6	30.0	3,371	--
	Aged 64+	10	50.0	7,290	--
Deaths	Aged 64+	3	100	7,290	--

Note1: Population data source for calculating rate estimates: U.S. Census Bureau, ACS 5-year estimate.

Note2: Rates for categories with fewer than 12 cases are suppressed due to high relative standard error.

Note3: Hospitalizations are regardless of deceased status; Deaths are regardless of hospitalization status

**Investigations are ongoing; data are subject to change.
Reporting through 23SEP2020**

Mesquite zip codes include 89027. The U.S. Census Bureau data uses Zip Code Tabulation Area (ZCTA), which does not list 89034 but has incorporated areas of 89034 within 89027 through the American Community Survey (ACS) 5-Year Estimates.

Table 2: Race/Ethnicity and COVID19 in Mesquite

Case Status	Race Ethnicity Categories	N	%	Population	Rate per 100,000
Cases	Hispanic	124	53.4	3,738	3317.3
	White	81	34.9	13,120	617.38
	American Indian/Alaskan Native	--	0.4	95	--
	Native Hawaiian/Pacific Islander	--	0.9	30	--
	Unknown	24	10.3	.	.
Hospitalizations	Hispanic	10	50.0	3,738	--
	White	10	50.0	13,120	--
Deaths	White	3	100	13,120	--

Note1: Population data source for calculating rate estimates: U.S. Census Bureau, ACS 5-year estimate.

Note2: Rates for categories with fewer than 12 cases are suppressed due to high relative standard error. Counts for categories with population less than 500 are suppressed for confidentiality.

Note3: Due to suppression, the total counts per case status may not equal expected totals.

Note4: Hospitalizations are regardless of deceased status; Deaths are regardless of hospitalization status

**Investigations are ongoing; data are subject to change.
Reporting through 23SEP2020**

Mesquite zip codes include 89027. The U.S. Census Bureau data uses Zip Code Tabulation Area (ZCTA), which does not list 89034 but has incorporated areas of 89034 within 89027 through the American Community Survey (ACS) 5-Year Estimates.

Table 3: Birth Sex and COVID19 in Mesquite

Case Status	Birth Sex Categories	N	%	Population	Rate per 100,000
Cases	Female	137	59.1	9,111	1503.7
	Male	93	40.1	8,793	1057.7
	Unknown	2	0.9	.	.
Hospitalizations	Female	12	60.0	9,111	131.71
	Male	8	40.0	8,793	--
Deaths	Male	3	100	8,793	--

Note1: Population data source for calculating rate estimates: U.S. Census Bureau, ACS 5-year estimate.

Note2: Rates for categories with fewer than 12 cases are suppressed due to high relative standard error. Counts for categories with population less than 500 are suppressed for confidentiality.

Note3: Hospitalizations are regardless of deceased status; Deaths are regardless of hospitalization status

**Investigations are ongoing; data are subject to change.
Reporting through 23SEP2020**

Mesquite zip codes include 89027. The U.S. Census Bureau data uses Zip Code Tabulation Area (ZCTA), which does not list 89034 but has incorporated areas of 89034 within 89027 through the American Community Survey (ACS) 5-Year Estimates.