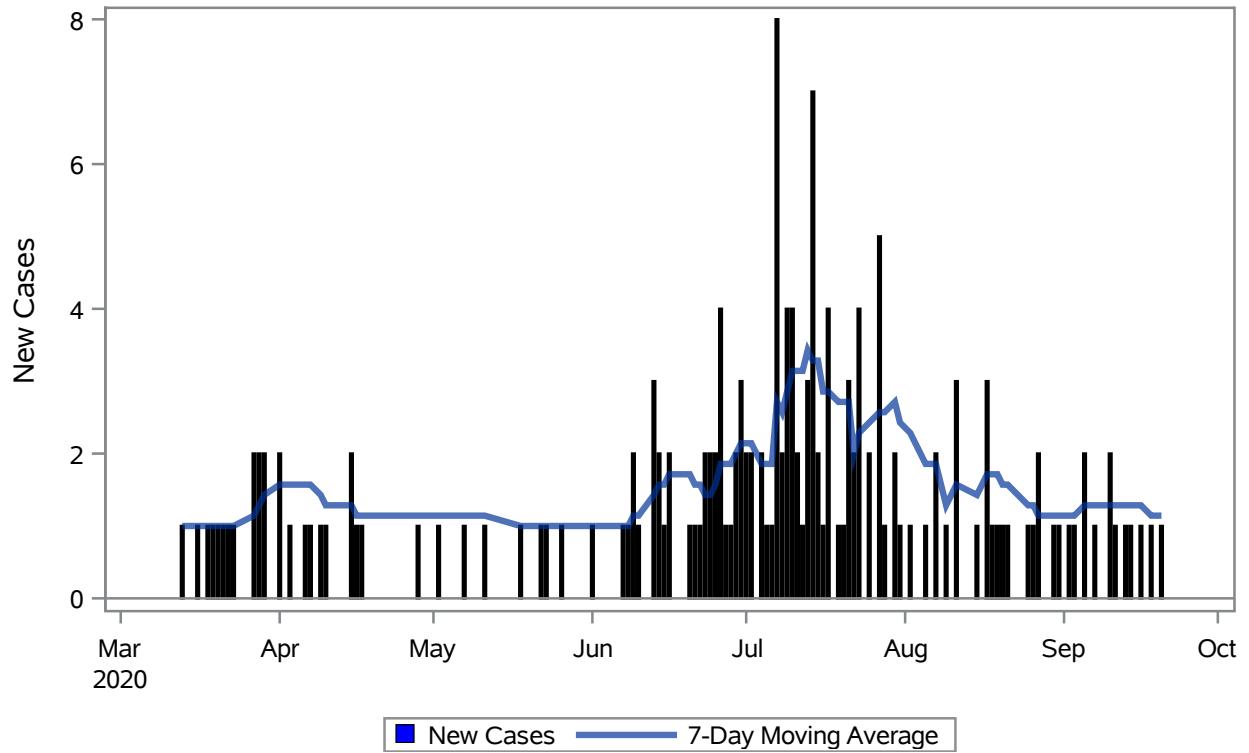
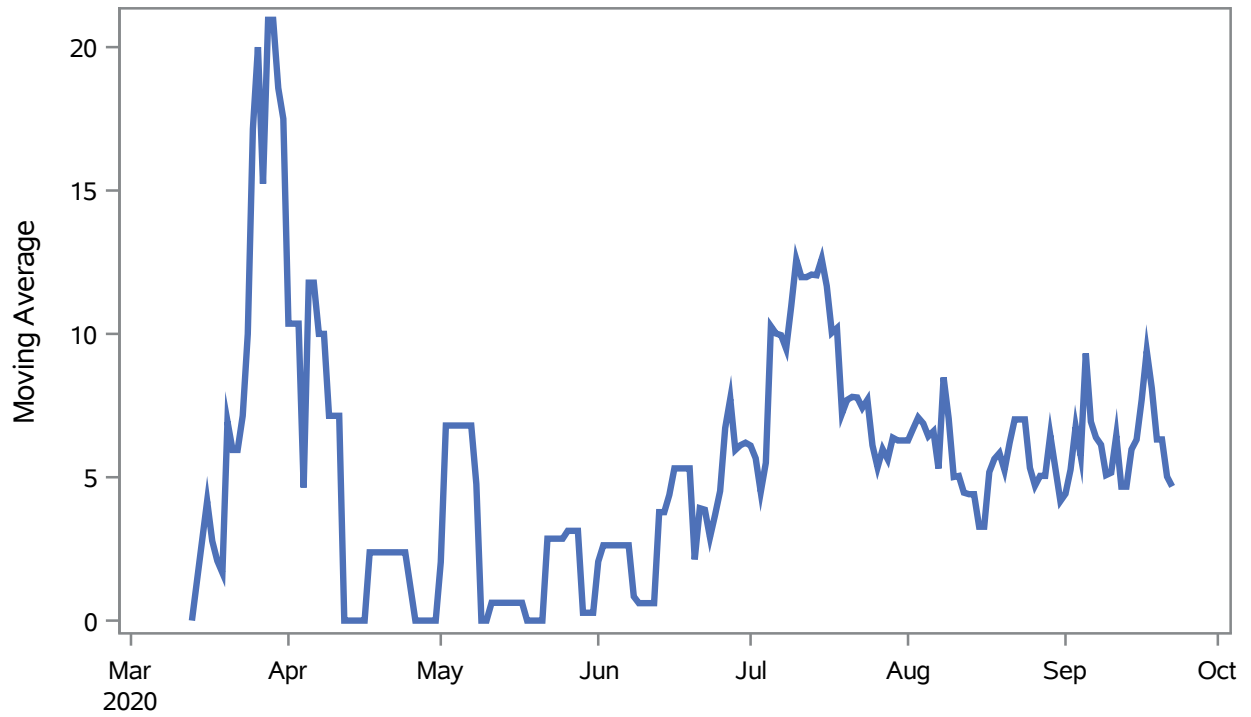


COVID19 Cases for Boulder City, 7-Day Moving Average



Investigations are ongoing; data are subject to change.
Reporting through 23SEP2020
Boulder City zip codes include 89005.

Percent of People Receiving COVID-19 Viral Tests Who Have Positive Results in Boulder City



Investigations are ongoing; data are subject to change.

Reporting through 23SEP2020

Boulder City zip codes include 89005.

Table 1: Age and COVID19 in Boulder City

Case Status	Age Categories	N	%	Population	Rate per 100,000
Cases	Aged 4 or less	5	3.0	659	--
	Aged 5 to 17	6	3.6	2,123	--
	Aged 18 to 24	11	6.5	921	--
	Aged 25 to 49	59	35.1	3,509	1681.4
	Aged 50 to 64	40	23.8	3,701	1080.8
	Aged 64+	47	28.0	4,767	985.95
Hospitalizations	Aged 25 to 49	1	5.0	3,509	--
	Aged 50 to 64	4	20.0	3,701	--
	Aged 64+	15	75.0	4,767	314.66
Deaths	Aged 64+	9	100	4,767	--

Note1: Population data source for calculating rate estimates: U.S. Census Bureau, ACS 5-year estimate.

Note2: Rates for categories with fewer than 12 cases are suppressed due to high relative standard error.

Note3: Hospitalizations are regardless of deceased status; Deaths are regardless of hospitalization status

**Investigations are ongoing; data are subject to change.
Reporting through 23SEP2020
Boulder City zip codes include 89005.**

Table 2: Race/Ethnicity and COVID19 in Boulder City

Case Status	Race Ethnicity Categories	N	%	Population	Rate per 100,000
Cases	Hispanic	18	10.7	1,164	1546.4
	White	120	71.4	13,569	884.37
	Asian	--	1.2	199	--
	American Indian/Alaskan Native	--	0.6	140	--
	Unknown	27	16.1	.	.
Hospitalizations	White	18	90.0	13,569	132.66
	Unknown	2	10.0	.	.
Deaths	White	9	100	13,569	--

Note1: Population data source for calculating rate estimates: U.S. Census Bureau, ACS 5-year estimate.

Note2: Rates for categories with fewer than 12 cases are suppressed due to high relative standard error. Counts for categories with population less than 500 are suppressed for confidentiality.

Note3: Due to suppression, the total counts per case status may not equal expected totals.

Note4: Hospitalizations are regardless of deceased status; Deaths are regardless of hospitalization status

**Investigations are ongoing; data are subject to change.
Reporting through 23SEP2020
Boulder City zip codes include 89005.**