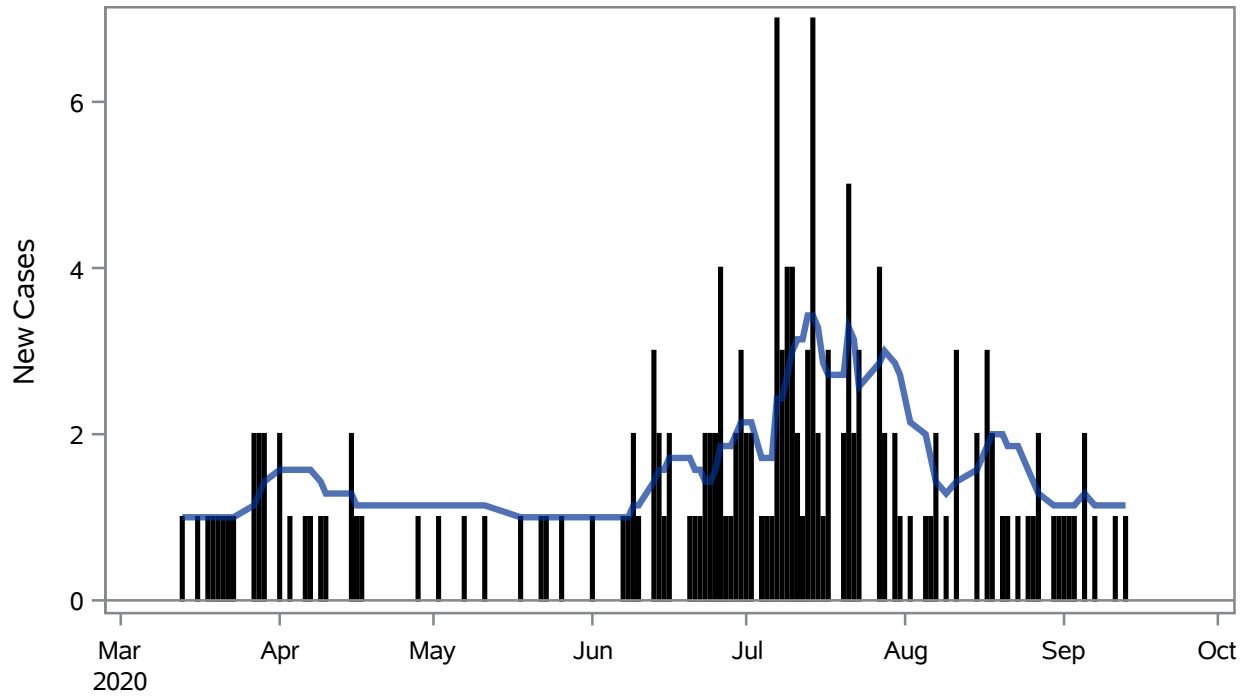


COVID19 Cases for Boulder City, 7-Day Moving Average



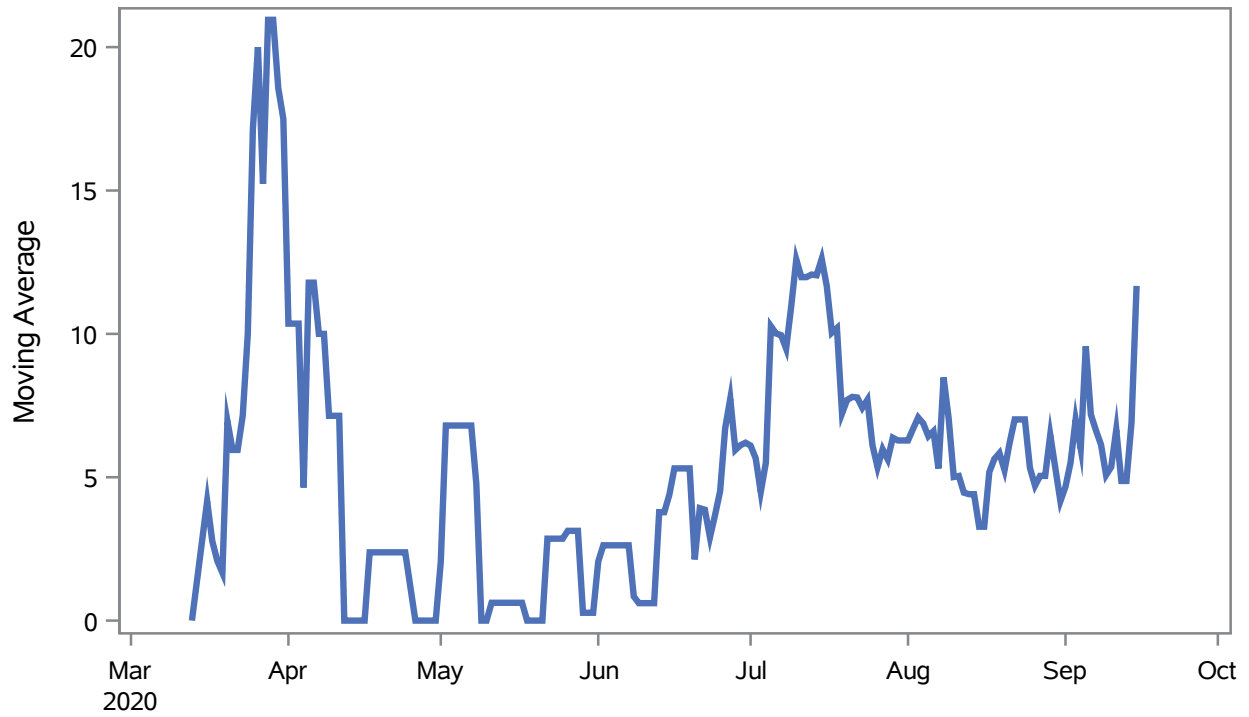
■ New Cases — 7-Day Moving Average

Investigations are ongoing; data are subject to change.

Reporting through 16SEP2020

Boulder City zip codes include 89005.

Percent of People Receiving COVID-19 Viral Tests Who Have Positive Results in Boulder City



Investigations are ongoing; data are subject to change.

Reporting through 16SEP2020

Boulder City zip codes include 89005.

Table 1: Age and COVID19 in Boulder City

Case Status	Age Categories	N	%	Population	Rate per 100,000
Cases	Aged 4 or less	5	3.1	659	--
	Aged 5 to 17	6	3.7	2,123	--
	Aged 18 to 24	11	6.7	921	--
	Aged 25 to 49	57	35.0	3,509	1624.4
	Aged 50 to 64	38	23.3	3,701	1026.7
	Aged 64+	46	28.2	4,767	964.97
Hospitalizations	Aged 25 to 49	1	5.9	3,509	--
	Aged 50 to 64	2	11.8	3,701	--
	Aged 64+	14	82.4	4,767	293.69
Deaths	Aged 64+	9	100	4,767	--

Note1: Population data source for calculating rate estimates: U.S. Census Bureau, ACS 5-year estimate.

Note2: Rates for categories with fewer than 12 cases are suppressed due to high relative standard error.

Note3: Hospitalizations are regardless of deceased status; Deaths are regardless of hospitalization status

**Investigations are ongoing; data are subject to change.
Reporting through 16SEP2020
Boulder City zip codes include 89005.**

Table 2: Race/Ethnicity and COVID19 in Boulder City

Case Status	Race Ethnicity Categories	N	%	Population	Rate per 100,000
Cases	Hispanic	18	11.0	1,164	1546.4
	White	115	70.6	13,569	847.52
	Asian	--	1.2	199	--
	American Indian/Alaskan Native	--	0.6	140	--
	Unknown	27	16.6	.	.
Hospitalizations	White	15	88.2	13,569	110.55
	Unknown	2	11.8	.	.
Deaths	White	9	100	13,569	--

Note1: Population data source for calculating rate estimates: U.S. Census Bureau, ACS 5-year estimate.

Note2: Rates for categories with fewer than 12 cases are suppressed due to high relative standard error. Counts for categories with population less than 500 are suppressed for confidentiality.

Note3: Hospitalizations are regardless of deceased status; Deaths are regardless of hospitalization status

**Investigations are ongoing; data are subject to change.
Reporting through 16SEP2020
Boulder City zip codes include 89005.**