



# COVID-19 Trends

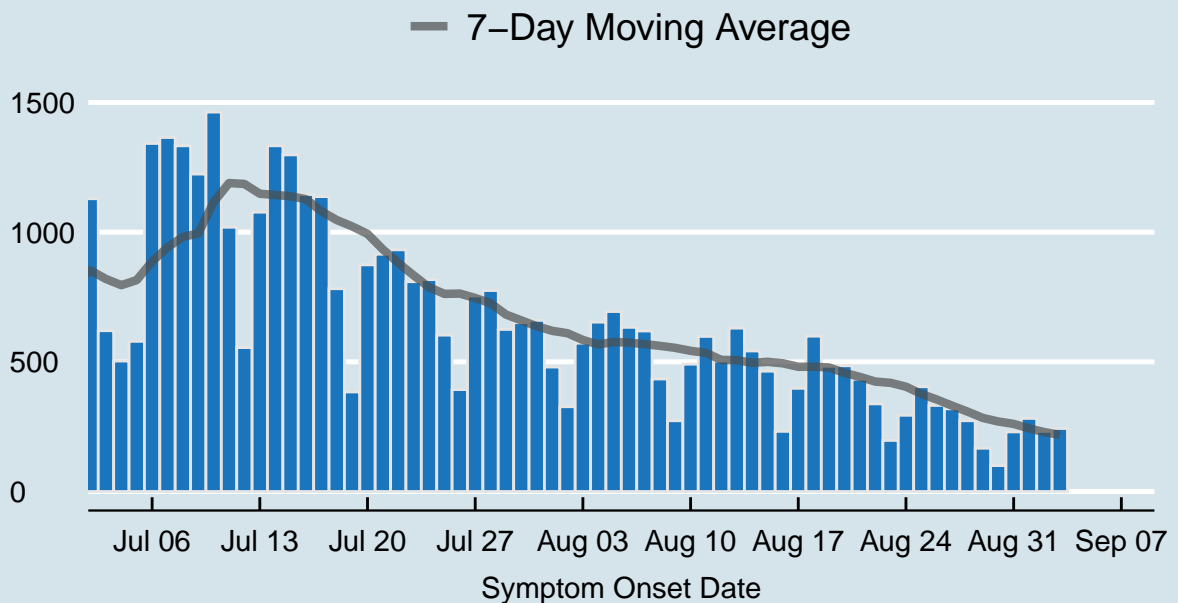
Clark County, Nevada

Document creation date: September 7, 2020

- General notes: This report uses surveillance data collected by the Southern Nevada Health District. Due to delays related to laboratory processing, reporting, and case investigations, data from the most recent days are less complete than data from older time points. For this reason, as of June 10, 2020 this report will not display data from the previous three days prior to the date that the report was created. As many case investigations are ongoing, all data presented in this report are considered preliminary and subject to change. Data regarding cases, hospitalizations, deaths, and labs were last updated September 7 at 12:00 AM, and data is reported up through September 3, 2020.
- Cases: Symptom onset date was used for aggregating cases. If symptom onset date was missing, the following dates were substituted in this order: diagnosis date, lab collection date, report date (date case was reported to SNHD), event creation date (date case was entered into TriSano, SNHD's surveillance system).
- Hospitalizations: Admission date was used for aggregating hospitalizations. If admission date was missing, report date was substituted. If a person had more than one hospitalization after his/her COVID-19 diagnosis, only the first admission date was used.
- Deaths: Date of death was used for aggregating deaths. If date of death was missing, report date was used.
- For the "7-Day Average of Daily New Cases per 100K, by Age Group (Years)" graph and table, the population data source for calculating rate estimates was the "2019 ASRHO Estimates and Projections Summary for 2020, Office of the State Demographer for Nevada." Rates for individual age categories may be based on small numbers, which may give unstable estimates.
- All graphs in this report show data from approximately 60 days prior to the date of the report.
- All tables show data from the last 14 days before the current date.
- For the "Percent of People Receiving COVID-19 Viral Tests Who Have Positive Results" graph, one person who has multiple specimens collected in one day is only reported once. If any of that person's tests are positive, that person counts as a positive result. If all of that individual's tests are negative, that person counts as a negative result. Laboratory tests were included if they were a test assessing for the presence of SARS-CoV-2 viral RNA, for example PCR tests. Antibody tests were excluded.

## COVID-19 Cases

Clark County, NV



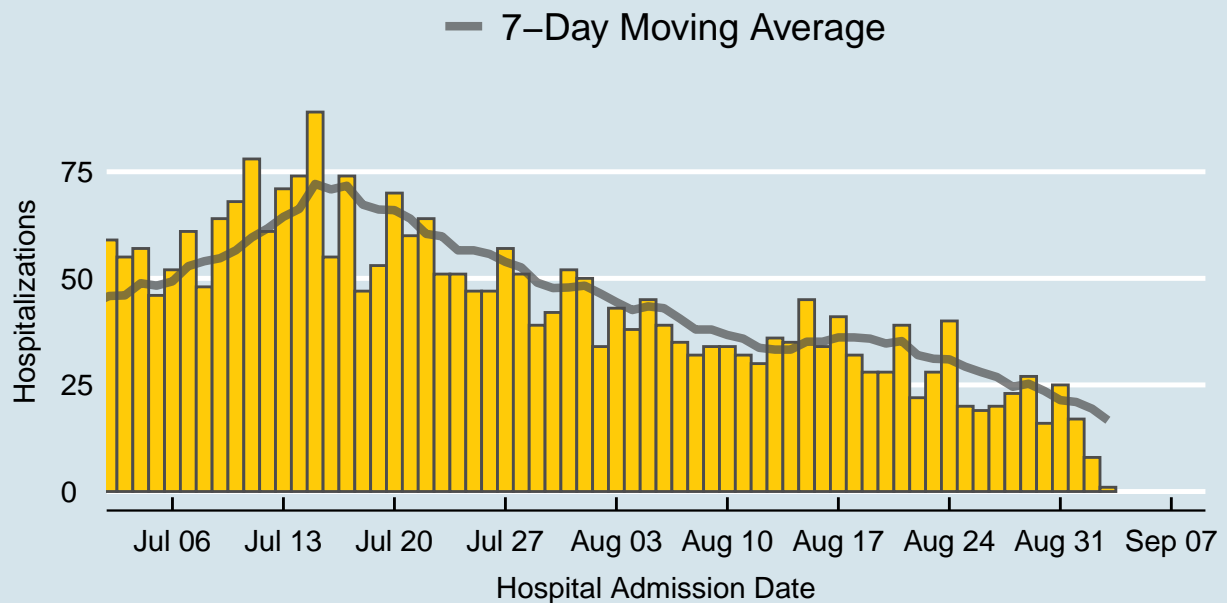
Data source: SNHD Office of Epidemiology and Disease Surveillance

Table 1: COVID-19 Cases per Day, Clark County, NV

Date	Cases per Day	7-Day Moving Average
Aug 21	433	442.0
Aug 22	338	424.0
Aug 23	197	419.0
Aug 24	294	404.1
Aug 25	404	376.3
Aug 26	332	354.7
Aug 27	319	331.0
Aug 28	273	308.1
Aug 29	167	283.7
Aug 30	100	269.9
Aug 31	230	260.7
Sep 01	282	243.3
Sep 02	232	229.0
Sep 03	243	218.1

## COVID-19 Hospitalizations

Clark County, NV



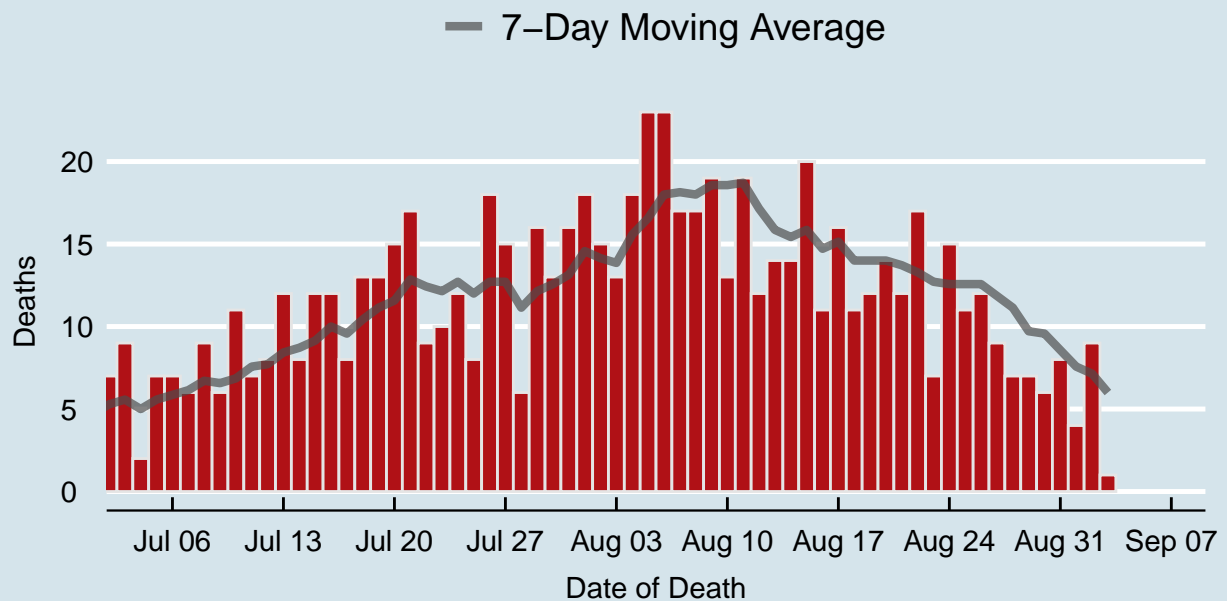
Data source: SNHD Office of Epidemiology and Disease Surveillance

Table 2: COVID-19 Hospitalizations per Day, Clark County, NV

Date	Hospitalizations per Day	7-Day Moving Average
Aug 21	39	35.3
Aug 22	22	32.0
Aug 23	28	31.1
Aug 24	40	31.0
Aug 25	20	29.3
Aug 26	19	28.0
Aug 27	20	26.9
Aug 28	23	24.6
Aug 29	27	25.3
Aug 30	16	23.6
Aug 31	25	21.4
Sep 01	17	21.0
Sep 02	8	19.4
Sep 03	1	16.7

## COVID-19 Deaths

Clark County, NV



Data source: SNHD Office of Epidemiology and Disease Surveillance

Table 3: COVID-19 Deaths per Day, Clark County, NV

Date	Deaths per Day	7-Day Moving Average
Aug 21	12	13.7
Aug 22	17	13.3
Aug 23	7	12.7
Aug 24	15	12.6
Aug 25	11	12.6
Aug 26	12	12.6
Aug 27	9	11.9
Aug 28	7	11.1
Aug 29	7	9.7
Aug 30	6	9.6
Aug 31	8	8.6
Sep 01	4	7.6
Sep 02	9	7.1
Sep 03	1	6.0

## 7-Day Average of Daily New Cases per 100K, by Age Group (Years)

Clark County, NV

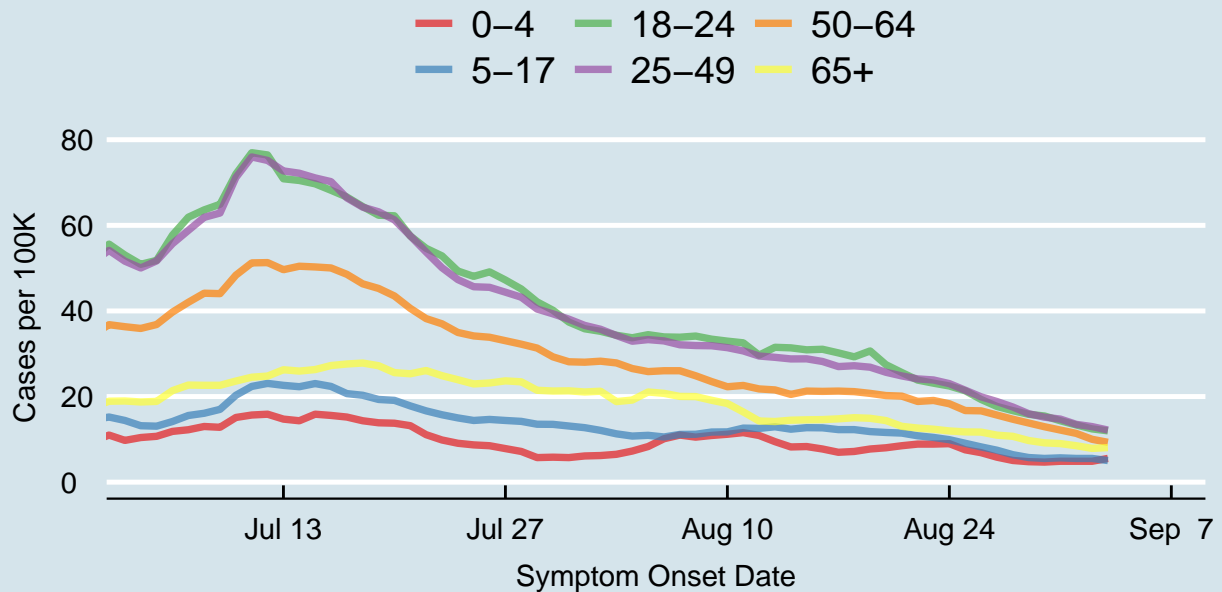
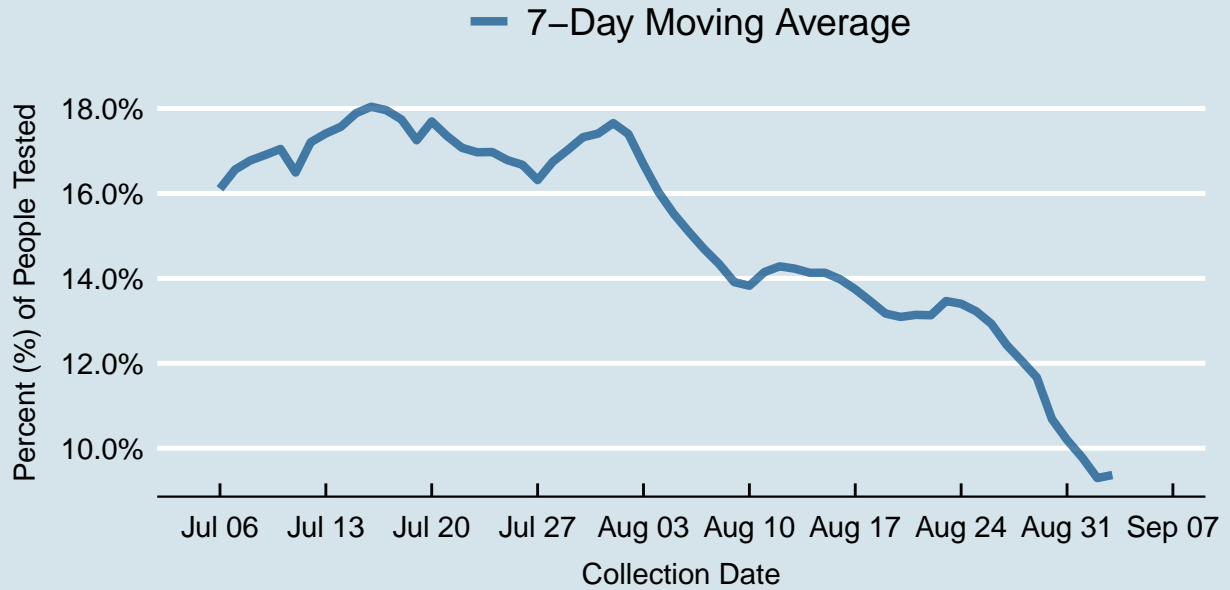


Table 4: 7-Day Average of Daily New Cases per 100K, by Age Group (Years)

Symptom Onset Date	0-4	5-17	18-24	25-49	50-64	65+
Aug 21	8.5	11.5	25.6	24.8	20.1	13.0
Aug 22	8.9	10.8	23.8	24.1	18.9	12.6
Aug 23	8.9	10.4	23.1	23.9	19.1	12.4
Aug 24	9.0	9.9	22.5	23.0	18.3	12.0
Aug 25	7.6	9.1	21.4	21.5	16.7	11.7
Aug 26	6.9	8.2	19.3	19.9	16.7	11.7
Aug 27	5.8	7.5	17.7	18.8	15.7	11.0
Aug 28	5.1	6.4	16.7	17.6	14.7	10.7
Aug 29	4.8	5.8	15.9	16.0	13.8	9.7
Aug 30	4.7	5.5	15.5	15.2	12.9	9.2
Aug 31	4.9	5.7	14.3	14.7	12.2	9.0
Sep 01	4.9	5.5	13.4	13.5	11.4	8.5
Sep 02	4.9	5.5	12.4	13.0	10.0	7.9
Sep 03	5.5	5.0	12.0	12.2	9.3	8.1

## Percent of People Receiving COVID-19 Viral Tests Who Have Positive Results

Clark County, NV





*Report prepared by: Kellie Watkins, PhD, MS, Ying Zhang, PhD, MPH (Office of Epidemiology and Disease Surveillance) and Lei Zhang, MS (Office of Informatics)*