

# COVID-19 Trends

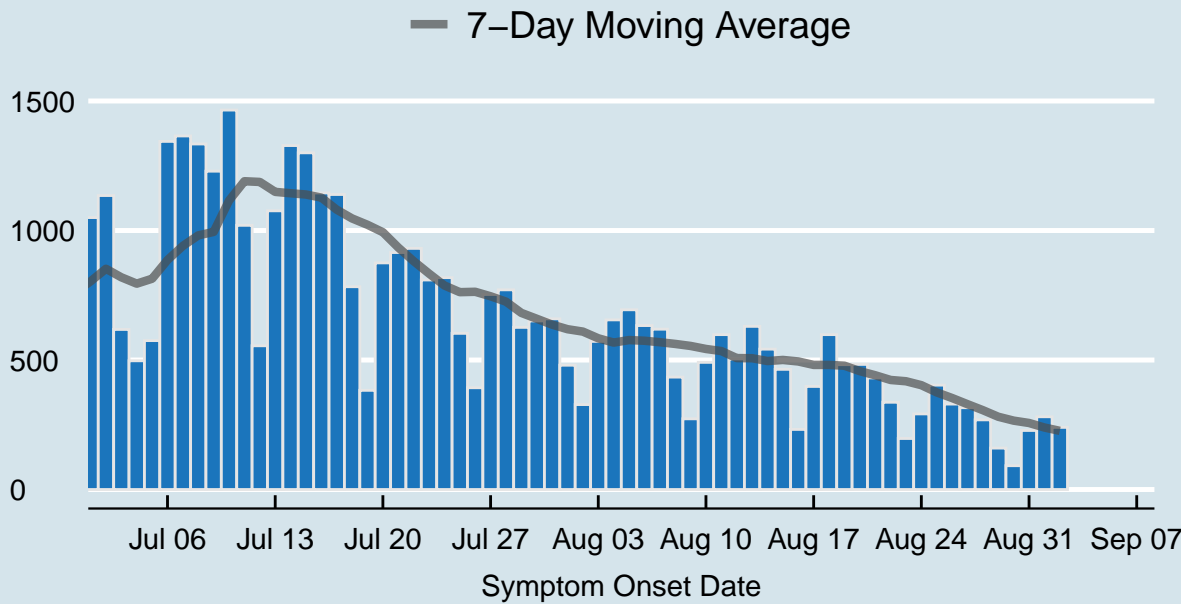
Clark County, Nevada

Document creation date: September 6, 2020

- General notes: This report uses surveillance data collected by the Southern Nevada Health District. Due to delays related to laboratory processing, reporting, and case investigations, data from the most recent days are less complete than data from older time points. For this reason, as of June 10, 2020 this report will not display data from the previous three days prior to the date that the report was created. As many case investigations are ongoing, all data presented in this report are considered preliminary and subject to change. Data regarding cases, hospitalizations, deaths, and labs were last updated September 6 at 12:00 AM, and data is reported up through September 2, 2020.
- Cases: Symptom onset date was used for aggregating cases. If symptom onset date was missing, the following dates were substituted in this order: diagnosis date, lab collection date, report date (date case was reported to SNHD), event creation date (date case was entered into TriSano, SNHD's surveillance system).
- Hospitalizations: Admission date was used for aggregating hospitalizations. If admission date was missing, report date was substituted. If a person had more than one hospitalization after his/her COVID-19 diagnosis, only the first admission date was used.
- Deaths: Date of death was used for aggregating deaths. If date of death was missing, report date was used.
- For the "7-Day Average of Daily New Cases per 100K, by Age Group (Years)" graph and table, the population data source for calculating rate estimates was the "2019 ASRHO Estimates and Projections Summary for 2020, Office of the State Demographer for Nevada." Rates for individual age categories may be based on small numbers, which may give unstable estimates.
- All graphs in this report show data from approximately 60 days prior to the date of the report.
- All tables show data from the last 14 days before the current date.
- For the "Percent of People Receiving COVID-19 Viral Tests Who Have Positive Results" graph, one person who has multiple specimens collected in one day is only reported once. If any of that person's tests are positive, that person counts as a positive result. If all of that individual's tests are negative, that person counts as a negative result. Laboratory tests were included if they were a test assessing for the presence of SARS-CoV-2 viral RNA, for example PCR tests. Antibody tests were excluded.

## COVID-19 Cases

Clark County, NV



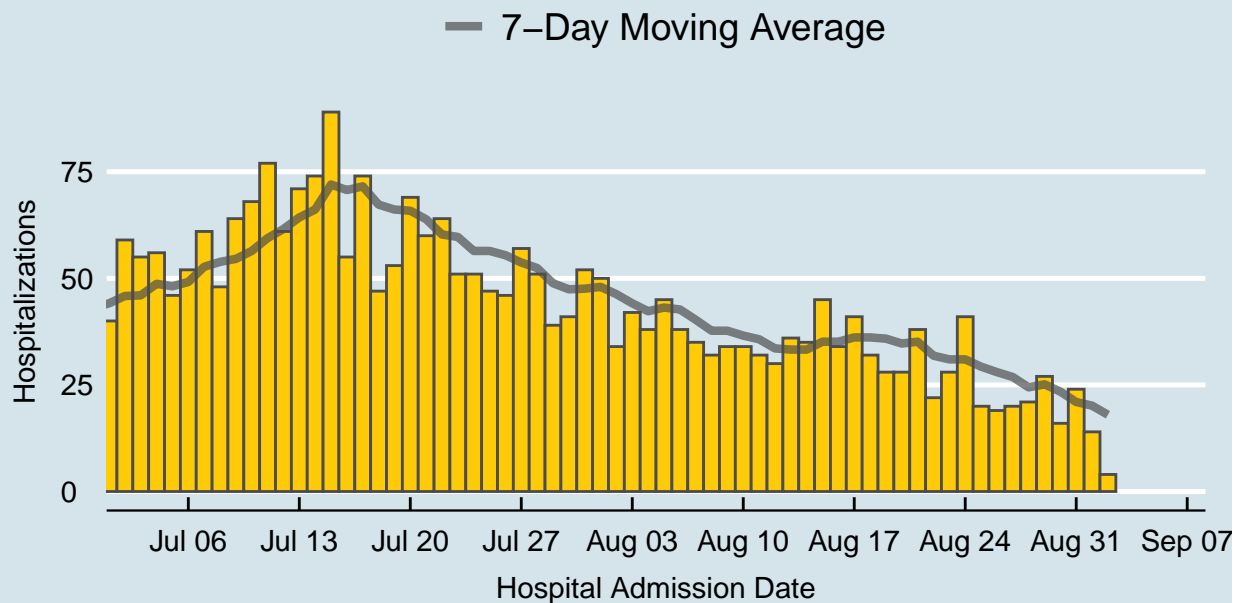
Data source: SNHD Office of Epidemiology and Disease Surveillance

Table 1: COVID-19 Cases per Day, Clark County, NV

Date	Cases per Day	7-Day Moving Average
Aug 20	483	457.0
Aug 21	431	441.1
Aug 22	337	423.0
Aug 23	197	418.0
Aug 24	292	402.9
Aug 25	403	375.0
Aug 26	330	353.3
Aug 27	316	329.4
Aug 28	269	306.3
Aug 29	160	281.0
Aug 30	92	266.0
Aug 31	228	256.9
Sep 01	281	239.4
Sep 02	240	226.6

## COVID-19 Hospitalizations

Clark County, NV



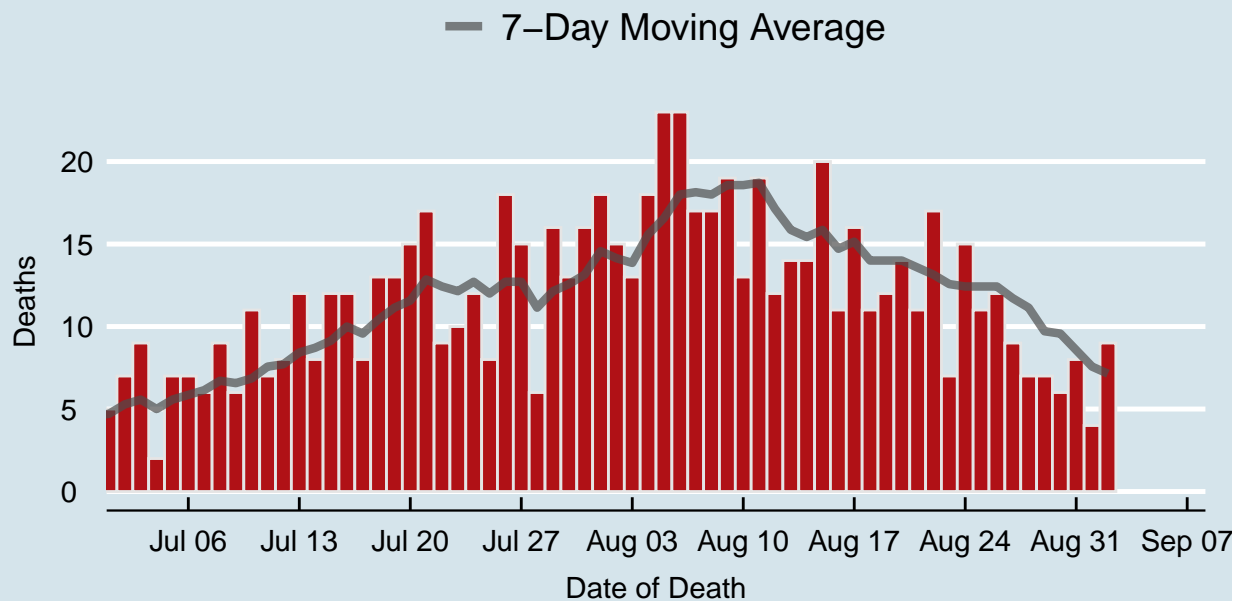
Data source: SNHD Office of Epidemiology and Disease Surveillance

Table 2: COVID-19 Hospitalizations per Day, Clark County, NV

Date	Hospitalizations per Day	7-Day Moving Average
Aug 20	28	34.7
Aug 21	38	35.1
Aug 22	22	31.9
Aug 23	28	31.0
Aug 24	41	31.0
Aug 25	20	29.3
Aug 26	19	28.0
Aug 27	20	26.9
Aug 28	21	24.4
Aug 29	27	25.1
Aug 30	16	23.4
Aug 31	24	21.0
Sep 01	14	20.1
Sep 02	4	18.0

## COVID-19 Deaths

Clark County, NV



Data source: SNHD Office of Epidemiology and Disease Surveillance

Table 3: COVID-19 Deaths per Day, Clark County, NV

Date	Deaths per Day	7-Day Moving Average
Aug 20	14	14.0
Aug 21	11	13.6
Aug 22	17	13.1
Aug 23	7	12.6
Aug 24	15	12.4
Aug 25	11	12.4
Aug 26	12	12.4
Aug 27	9	11.7
Aug 28	7	11.1
Aug 29	7	9.7
Aug 30	6	9.6
Aug 31	8	8.6
Sep 01	4	7.6
Sep 02	9	7.1

## 7-Day Average of Daily New Cases per 100K, by Age Group (Years)

Clark County, NV

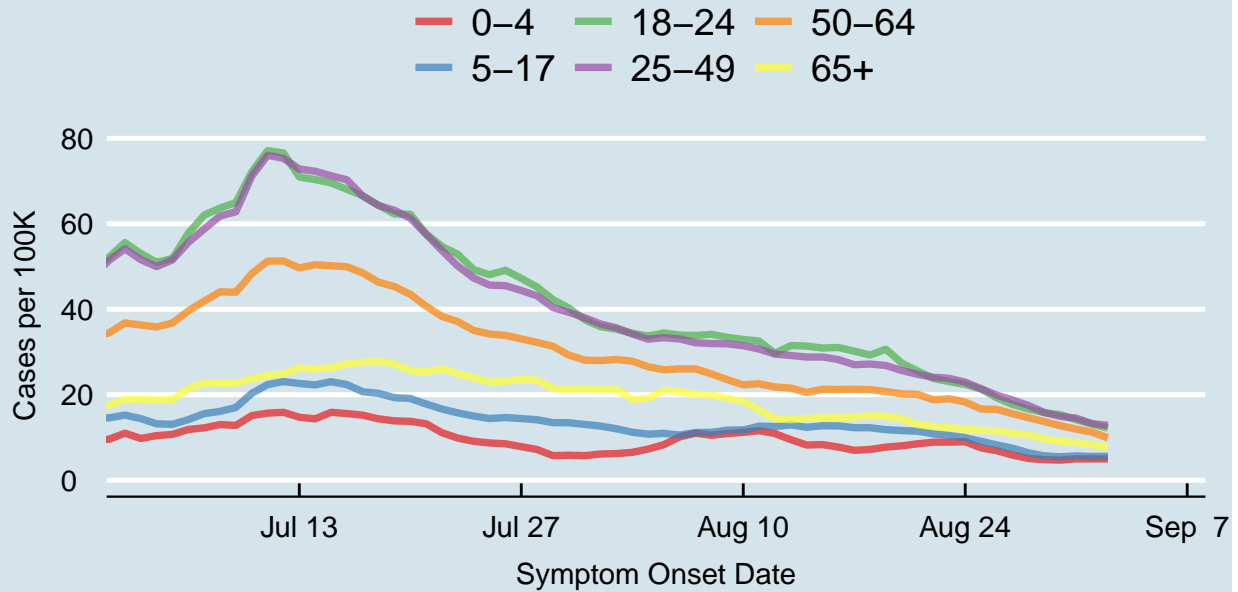
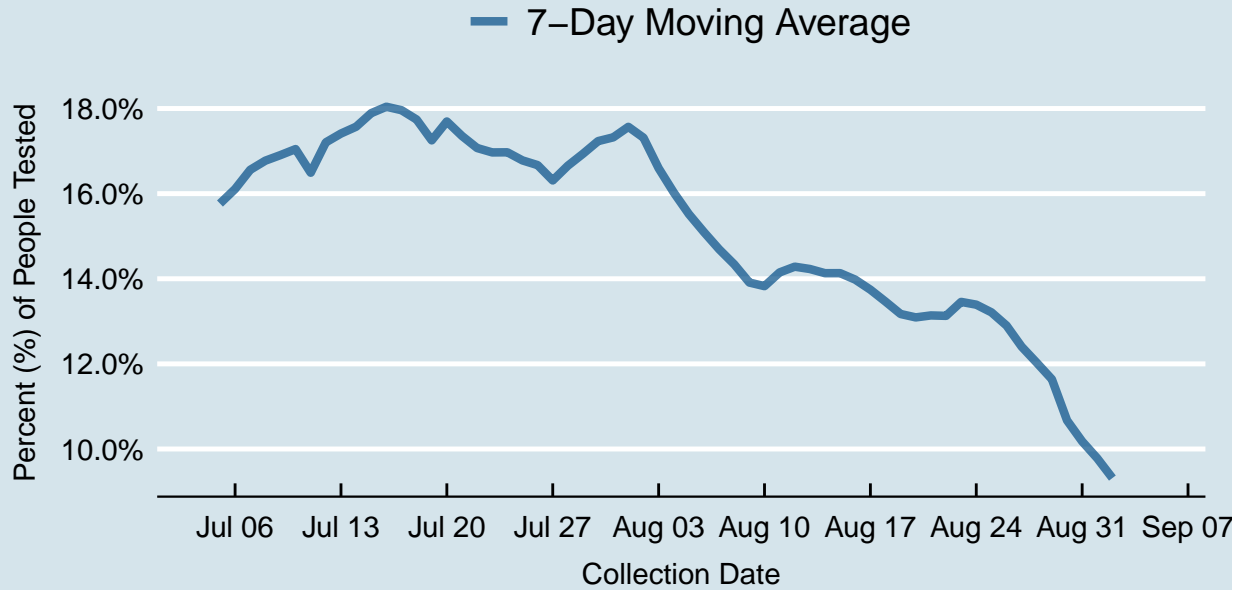


Table 4: 7-Day Average of Daily New Cases per 100K, by Age Group (Years)

Symptom Onset Date	0-4	5-17	18-24	25-49	50-64	65+
Aug 20	8.0	11.6	27.4	25.7	20.2	14.3
Aug 21	8.5	11.5	25.5	24.8	20.1	13.0
Aug 22	8.9	10.8	23.8	24.1	18.8	12.5
Aug 23	8.9	10.4	23.1	23.8	19.1	12.3
Aug 24	9.0	9.9	22.4	22.9	18.3	11.9
Aug 25	7.6	9.1	21.3	21.4	16.7	11.7
Aug 26	6.9	8.2	19.3	19.9	16.6	11.6
Aug 27	5.8	7.5	17.7	18.7	15.5	10.9
Aug 28	5.1	6.4	16.6	17.5	14.6	10.6
Aug 29	4.8	5.7	15.8	15.8	13.7	9.6
Aug 30	4.7	5.5	15.3	14.9	12.7	9.1
Aug 31	5.0	5.7	14.1	14.5	11.9	8.8
Sep 01	5.0	5.5	13.1	13.3	11.2	8.3
Sep 02	5.0	5.6	12.2	12.8	9.9	7.8

## Percent of People Receiving COVID-19 Viral Tests Who Have Positive Results

Clark County, NV





*Report prepared by: Kellie Watkins, PhD, MS, Ying Zhang, PhD, MPH (Office of Epidemiology and Disease Surveillance) and Lei Zhang, MS (Office of Informatics)*