

# COVID-19 Trends

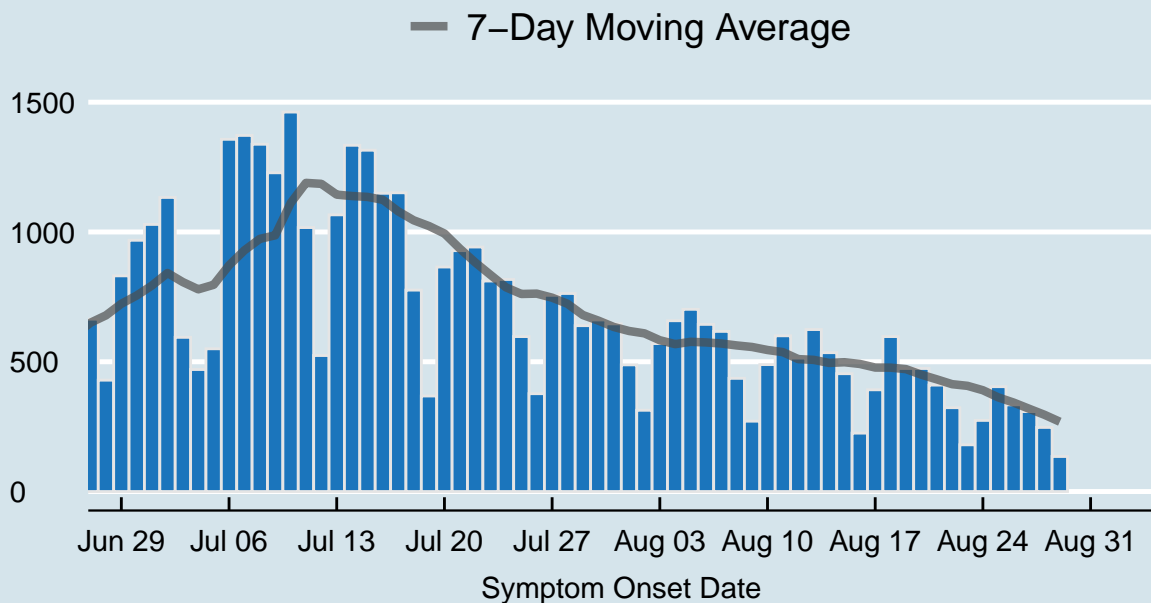
Clark County, Nevada

Document creation date: September 2, 2020

- General notes: This report uses surveillance data collected by the Southern Nevada Health District. Due to delays related to laboratory processing, reporting, and case investigations, data from the most recent days are less complete than data from older time points. For this reason, as of June 10, 2020 this report will not display data from the previous three days prior to the date that the report was created. As many case investigations are ongoing, all data presented in this report are considered preliminary and subject to change. Data regarding cases, hospitalizations, deaths, and labs were last updated September 2 at 12:00 AM, and data is reported up through August 29, 2020.
- Cases: Symptom onset date was used for aggregating cases. If symptom onset date was missing, the following dates were substituted in this order: diagnosis date, lab collection date, report date (date case was reported to SNHD), event creation date (date case was entered into TriSano, SNHD's surveillance system).
- Hospitalizations: Admission date was used for aggregating hospitalizations. If admission date was missing, report date was substituted. If a person had more than one hospitalization after his/her COVID-19 diagnosis, only the first admission date was used.
- Deaths: Date of death was used for aggregating deaths. If date of death was missing, report date was used.
- For the "7-Day Average of Daily New Cases per 100K, by Age Group (Years)" graph and table, the population data source for calculating rate estimates was the "2019 ASRHO Estimates and Projections Summary for 2020, Office of the State Demographer for Nevada." Rates for individual age categories may be based on small numbers, which may give unstable estimates.
- All graphs in this report show data from approximately 60 days prior to the date of the report.
- All tables show data from the last 14 days before the current date.
- For the "Percent of People Receiving COVID-19 Viral Tests Who Have Positive Results" graph, one person who has multiple specimens collected in one day is only reported once. If any of that person's tests are positive, that person counts as a positive result. If all of that individual's tests are negative, that person counts as a negative result. Laboratory tests were included if they were a test assessing for the presence of SARS-CoV-2 viral RNA, for example PCR tests. Antibody tests were excluded.

## COVID-19 Cases

Clark County, NV



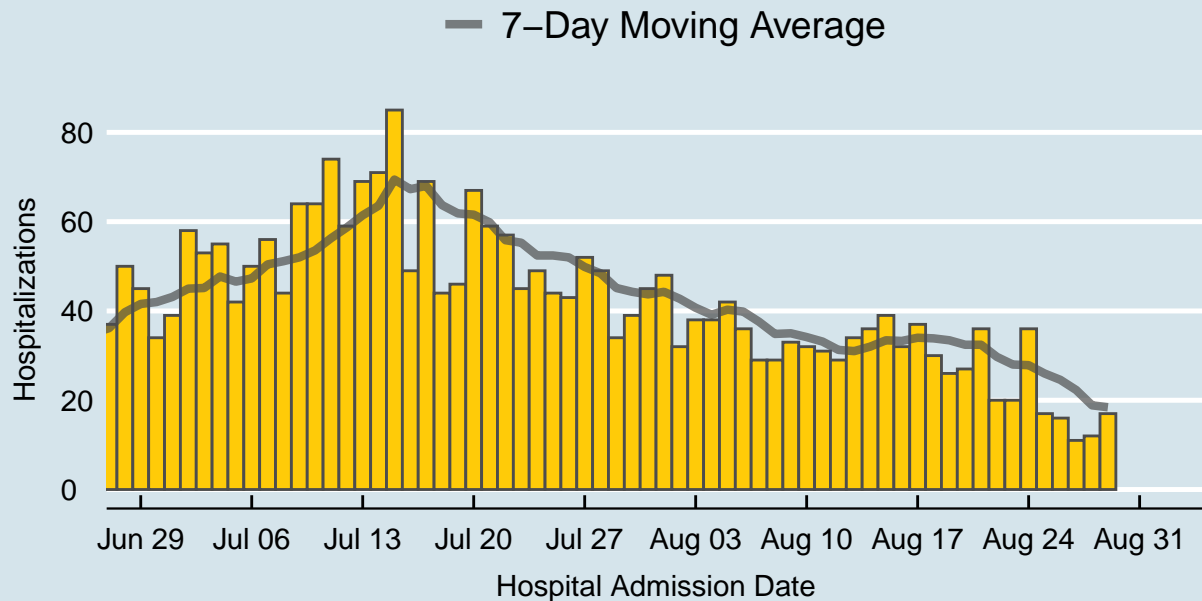
Data source: SNHD Office of Epidemiology and Disease Surveillance

Table 1: COVID-19 Cases per Day, Clark County, NV

Date	Cases per Day	7-Day Moving Average
Aug 16	225	491.6
Aug 17	392	477.7
Aug 18	597	477.3
Aug 19	474	471.6
Aug 20	474	450.1
Aug 21	410	432.3
Aug 22	323	413.6
Aug 23	180	407.1
Aug 24	274	390.3
Aug 25	404	362.7
Aug 26	334	342.7
Aug 27	308	319.0
Aug 28	247	295.7
Aug 29	135	268.9

## COVID-19 Hospitalizations

Clark County, NV



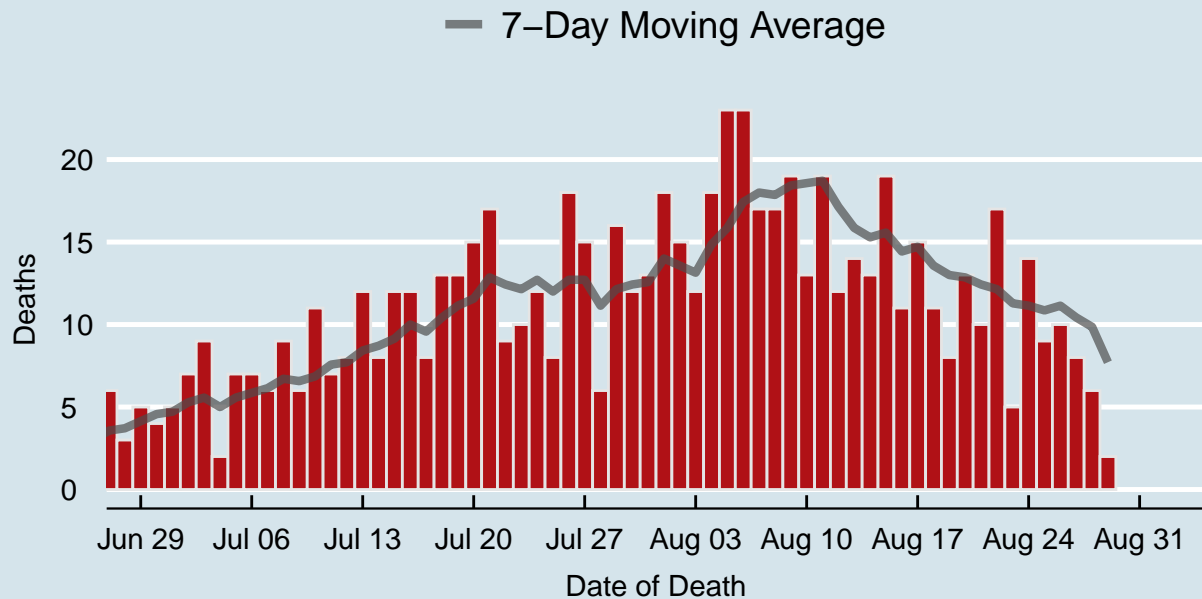
Data source: SNHD Office of Epidemiology and Disease Surveillance

Table 2: COVID-19 Hospitalizations per Day, Clark County, NV

Date	Hospitalizations per Day	7-Day Moving Average
Aug 16	32	33.3
Aug 17	37	34.0
Aug 18	30	33.9
Aug 19	26	33.4
Aug 20	27	32.4
Aug 21	36	32.4
Aug 22	20	29.7
Aug 23	20	28.0
Aug 24	36	27.9
Aug 25	17	26.0
Aug 26	16	24.6
Aug 27	11	22.3
Aug 28	12	18.9
Aug 29	17	18.4

## COVID-19 Deaths

Clark County, NV



Data source: SNHD Office of Epidemiology and Disease Surveillance

Table 3: COVID-19 Deaths per Day, Clark County, NV

Date	Deaths per Day	7-Day Moving Average
Aug 16	11	14.4
Aug 17	15	14.7
Aug 18	11	13.6
Aug 19	8	13.0
Aug 20	13	12.9
Aug 21	10	12.4
Aug 22	17	12.1
Aug 23	5	11.3
Aug 24	14	11.1
Aug 25	9	10.9
Aug 26	10	11.1
Aug 27	8	10.4
Aug 28	6	9.9
Aug 29	2	7.7

## 7-Day Average of Daily New Cases per 100K, by Age Group (Years)

Clark County, NV

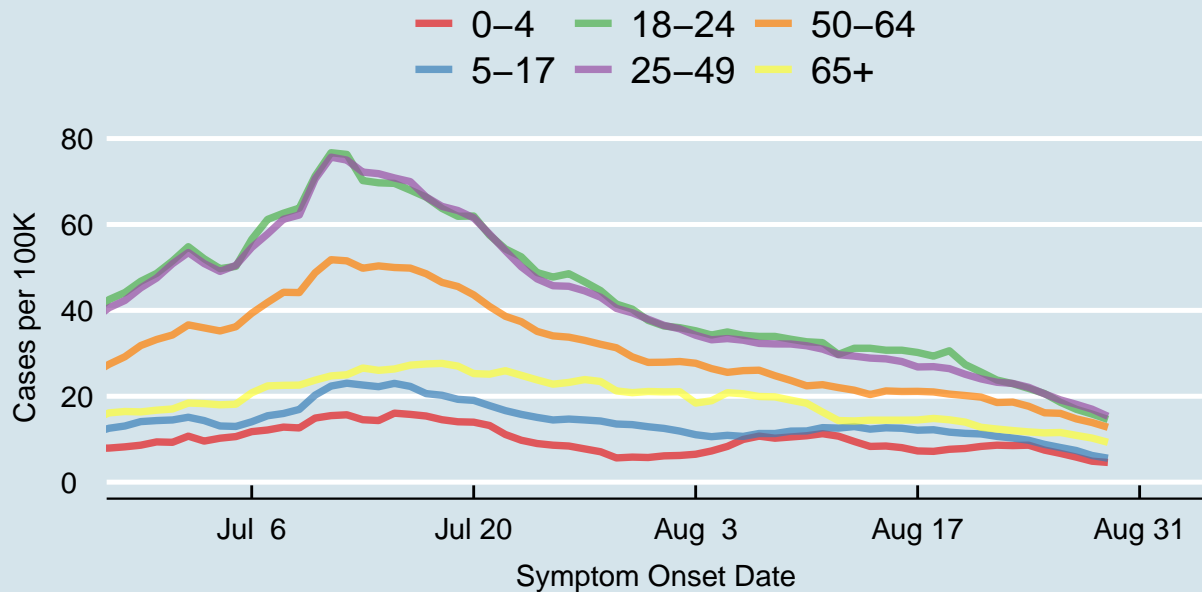
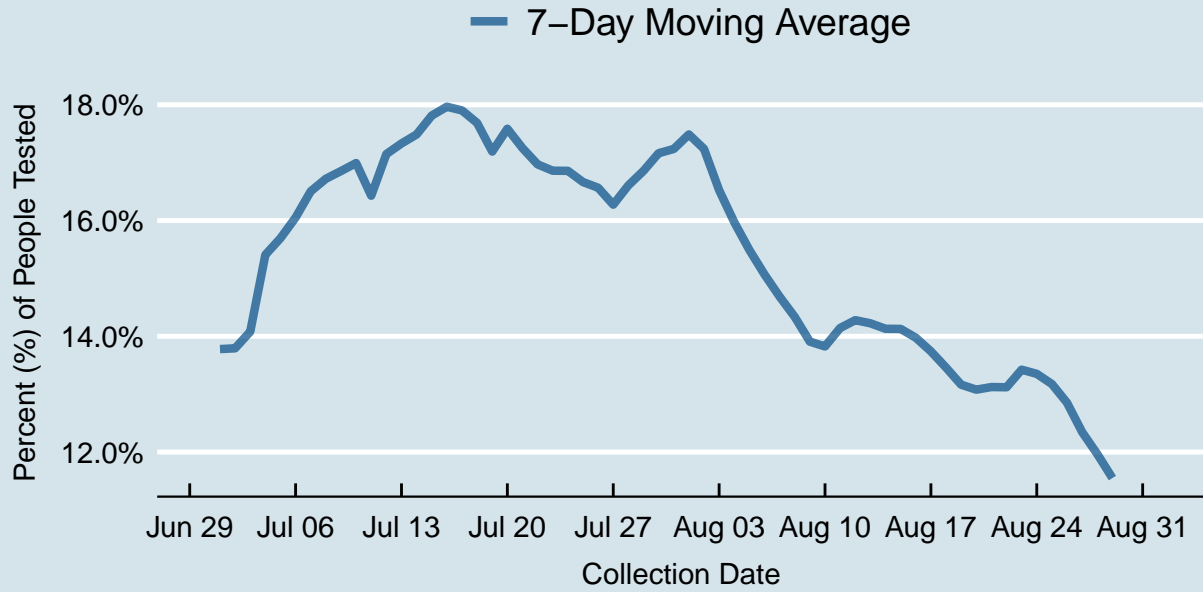


Table 4: 7-Day Average of Daily New Cases per 100K, by Age Group (Years)

Symptom Onset Date	0-4	5-17	18-24	25-49	50-64	65+
Aug 16	8.0	12.6	30.7	28.1	21.1	14.4
Aug 17	7.3	12.1	30.2	26.8	21.1	14.5
Aug 18	7.2	12.2	29.3	26.9	21.0	14.8
Aug 19	7.7	11.6	30.6	26.4	20.5	14.5
Aug 20	7.8	11.4	27.4	25.1	20.2	14.0
Aug 21	8.3	11.2	25.6	24.0	19.8	12.8
Aug 22	8.6	10.7	23.8	23.3	18.5	12.4
Aug 23	8.5	10.3	22.9	23.0	18.6	12.0
Aug 24	8.6	9.7	21.8	22.1	17.7	11.7
Aug 25	7.5	8.8	20.6	20.6	16.2	11.5
Aug 26	6.7	8.1	18.6	19.2	16.0	11.6
Aug 27	5.8	7.4	17.0	18.1	14.7	10.9
Aug 28	4.9	6.2	15.9	17.0	13.9	10.3
Aug 29	4.6	5.6	14.6	15.3	12.8	9.3

## Percent of People Receiving COVID-19 Viral Tests Who Have Positive Results

Clark County, NV





*Report prepared by: Kellie Watkins, PhD, MS, Ying Zhang, PhD, MPH (Office of Epidemiology and Disease Surveillance) and Lei Zhang, MS (Office of Informatics)*