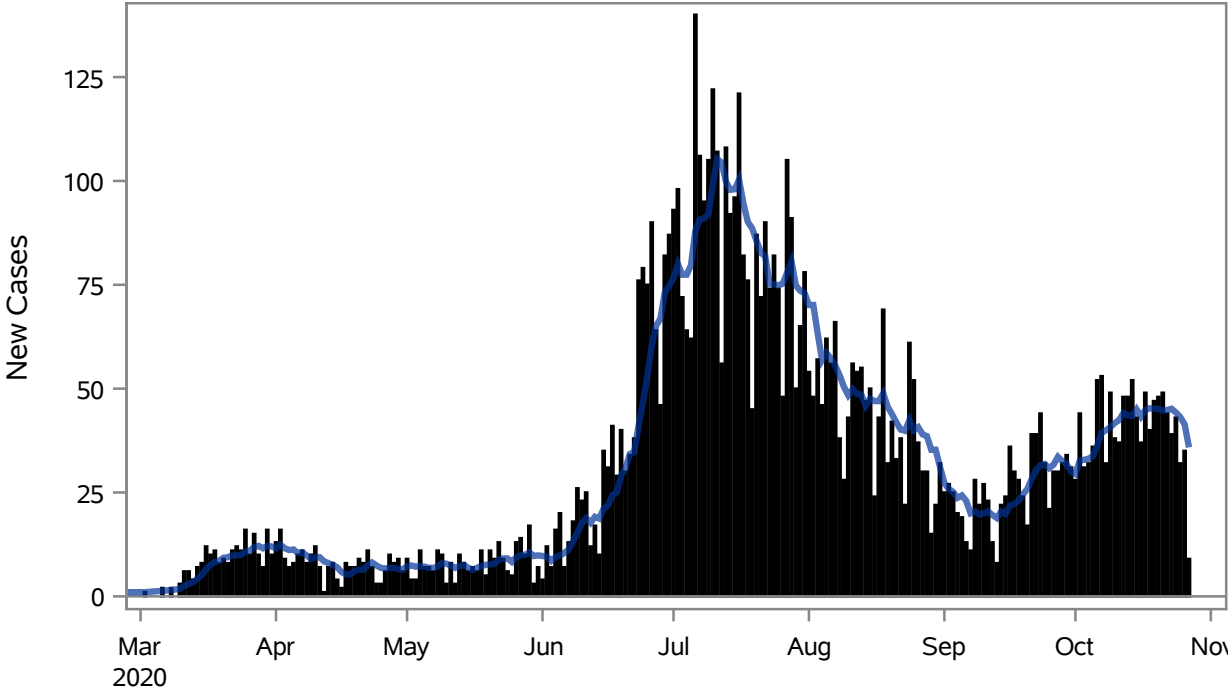


### COVID19 Cases for Henderson, 7-Day Moving Average



■ New Cases — 7-Day Moving Average

Investigations are ongoing; data are subject to change.

Reporting through 28OCT2020

Henderson zip codes include 89002, 89011, 89012, 89014, 89015, 89044, 89052, 89074.

**Table 1: New COVID19 Cases and 7-Day Moving Average in Henderson, Previous Two Weeks**

Date (Daily)	New Cases	7-Day Moving Average
15OCT2020	43	45.00
16OCT2020	37	43.29
17OCT2020	49	44.86
18OCT2020	40	45.29
19OCT2020	47	45.14
20OCT2020	48	45.14
21OCT2020	49	44.71
22OCT2020	44	44.86
23OCT2020	39	45.14
24OCT2020	43	44.29
25OCT2020	32	43.14
26OCT2020	35	41.43

---

Note1: Event Date is calculated as follows based on completed information:

1) Disease onset date 2) Disease diagnosis date 3) Lab result collection date 4) Report date to SNHD.

---

**Investigations are ongoing; data are subject to change.**

**Reporting through 28OCT2020**

**Henderson zip codes include 89002, 89011, 89012, 89014, 89015, 89044, 89052, 89074.**

### Percent of People Receiving COVID-19 Viral Tests Who Have Positive Results in Henderson



Investigations are ongoing; data are subject to change.

Reporting through 28OCT2020

Henderson zip codes include 89002, 89011, 89012, 89014, 89015, 89044, 89052, 89074.

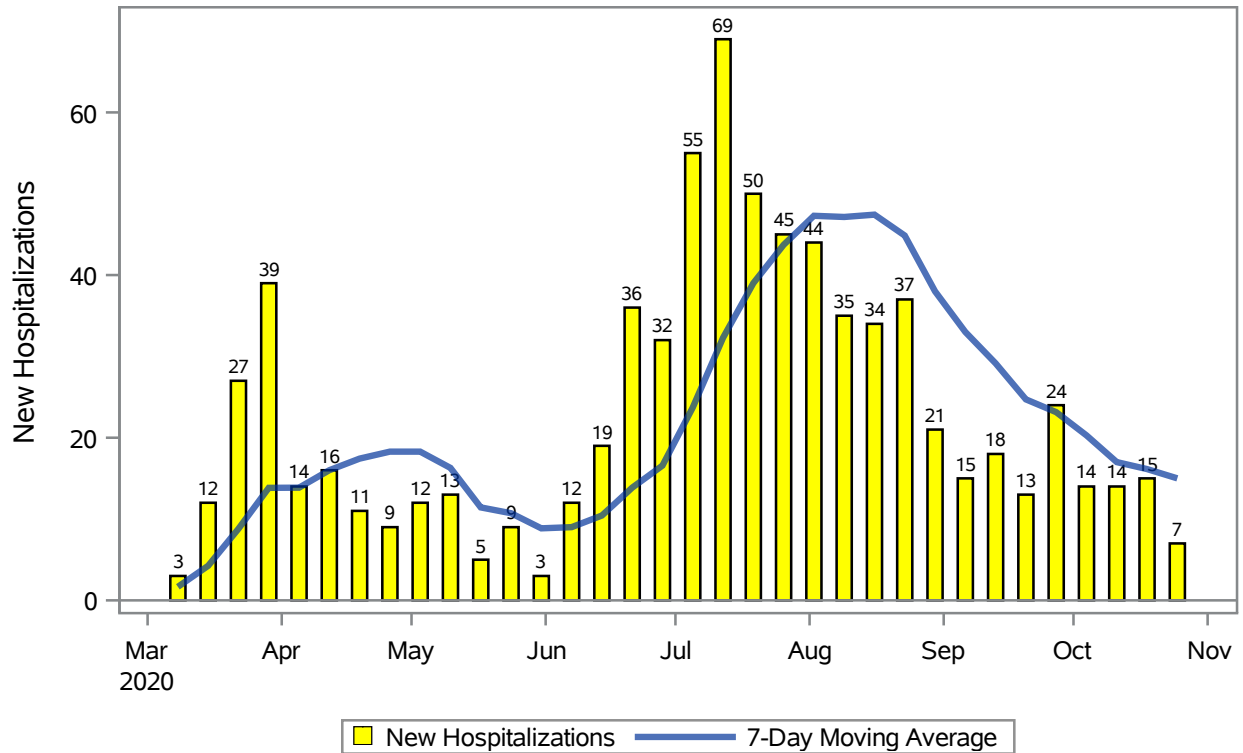
**Table 2: Percent of People Receiving COVID-19 Viral Tests Who Have Positive Results in Henderson**

Collection Date	Positive	Negative	Equivocal	Total	% Positivity	7-Day Moving Average
12OCT2020	32	566	0	598	5.35	6.04
13OCT2020	73	958	0	1031	7.08	6.33
14OCT2020	63	856	2	921	6.84	6.50
15OCT2020	74	732	1	807	9.17	7.22
16OCT2020	45	753	0	798	5.64	6.76
17OCT2020	46	512	1	559	8.23	6.72
18OCT2020	43	459	0	502	8.57	7.27
19OCT2020	58	659	0	717	8.09	7.66
20OCT2020	62	1035	0	1097	5.65	7.46
21OCT2020	59	874	0	933	6.32	7.38
22OCT2020	59	769	0	828	7.13	7.09
23OCT2020	60	727	0	787	7.62	7.37
24OCT2020	66	504	0	570	11.58	7.85
25OCT2020	35	417	0	452	7.74	7.73
26OCT2020	33	309	0	342	9.65	7.96

Note: Testing Data includes a 3 day delay

**Investigations are ongoing; data are subject to change.  
Reporting through 28OCT2020  
Henderson zip codes include 89002, 89011, 89012, 89014, 89015, 89044, 89052, 89074.**

### COVID19 Hospitalizations for Henderson, 7-Day Moving Average



Investigations are ongoing; data are subject to change.

Reporting through 28OCT2020

Henderson zip codes include 89002, 89011, 89012, 89014, 89015, 89044, 89052, 89074.

**Table 3: New COVID19-Related Hospitalizations and 7-Day Moving Average in Henderson, previous month**

Week	Hospitalizations	7-Day Moving Average
04OCT2020	14	20.3
11OCT2020	14	17.0
18OCT2020	15	16.1
25OCT2020	7	15.0

---

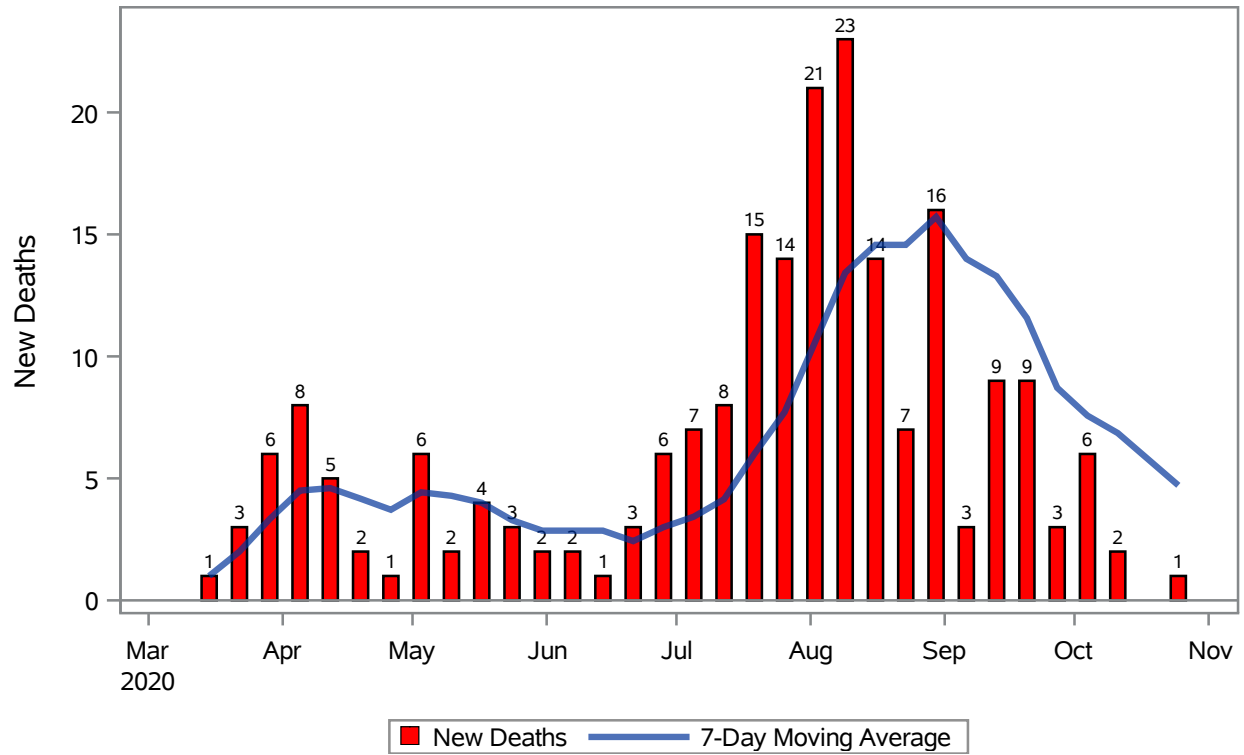
Note1: Admission Date is calculated as follows based on completed information:  
A) COVID19 Case is hospitalized B) COVID19 Case has a hospital admission date.

If admission date is missing, then the following is substituted temporarily, in order:  
1) Disease onset date 2) Disease diagnosis date 3) Lab result collection date 4) Report date to SNHD.

---

**Investigations are ongoing; data are subject to change.  
Reporting through 28OCT2020  
Henderson zip codes include 89002, 89011, 89012, 89014, 89015, 89044, 89052, 89074.**

### COVID19 Deaths for Henderson, 7-Day Moving Average



Investigations are ongoing; data are subject to change.

Reporting through 28OCT2020

Henderson zip codes include 89002, 89011, 89012, 89014, 89015, 89044, 89052, 89074.

**Table 4: New COVID19-Related Deaths and 7-Day Moving Average in Henderson, Previous Month**

Week	Deaths	7-Day Moving Average
04OCT2020	6	7.57
11OCT2020	2	6.86
25OCT2020	1	4.71

---

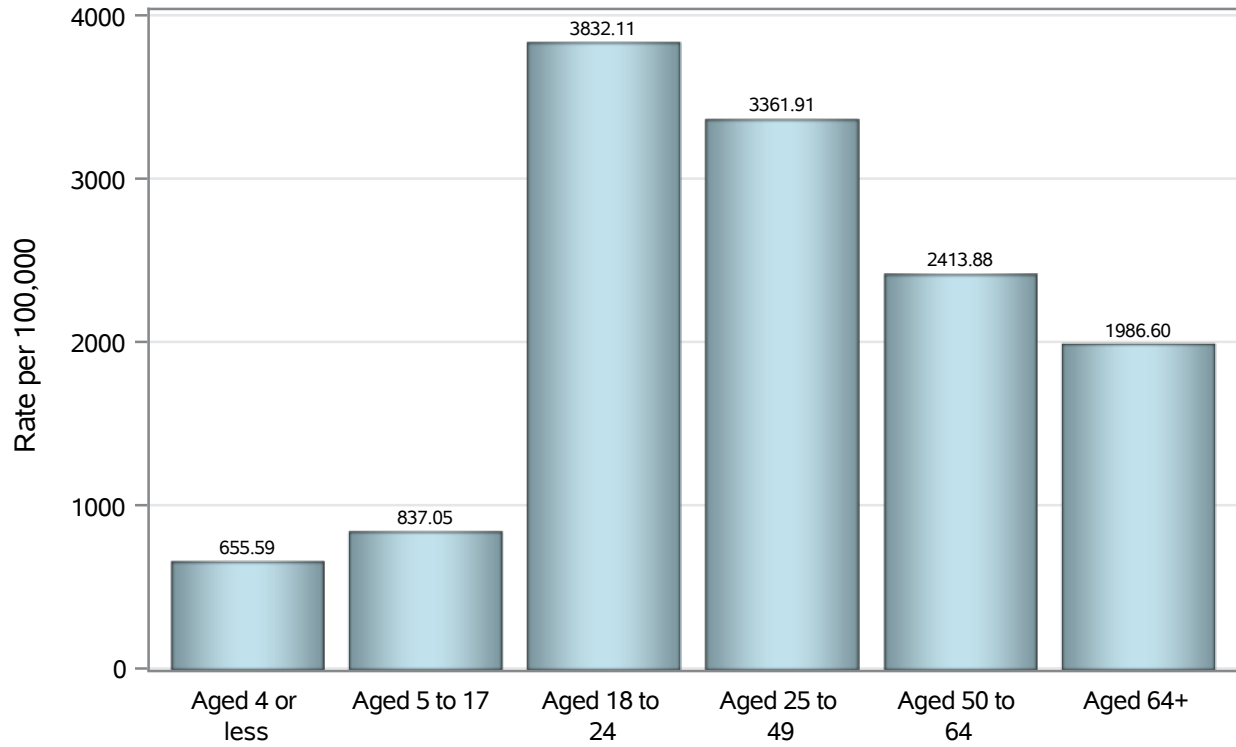
Note1: Date of Death is calculated as follows based on completed information:  
A) COVID19 Case is reported as deceased B) COVID19 Case has a reported date of death.

If date of death is missing, then the following is substituted temporarily, in order:  
1) Disease onset date 2) Disease diagnosis date  
3) Lab result collection date 4) Report date to SNHD.

---



### Case Age Rates in Henderson

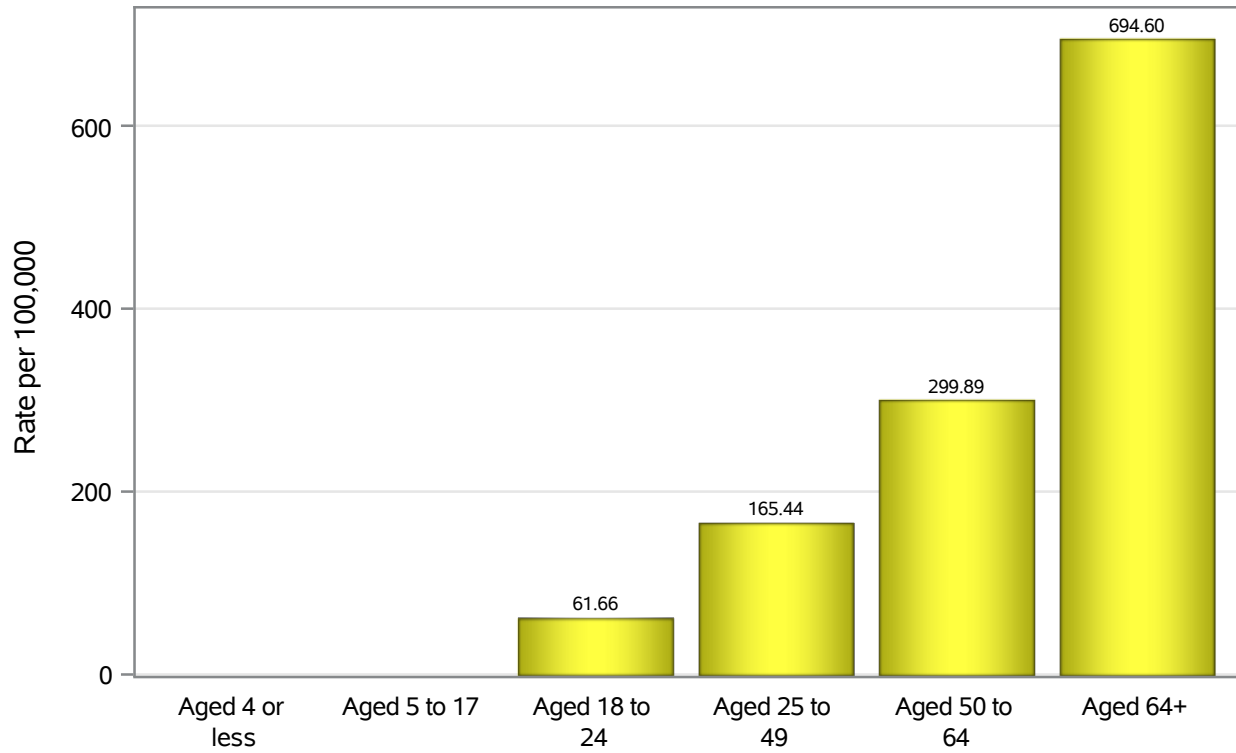


Investigations are ongoing; data are subject to change.

Reporting through 28OCT2020

Henderson zip codes include 89002, 89011, 89012, 89014, 89015, 89044, 89052, 89074.

### Hospitalization Age Rates in Henderson

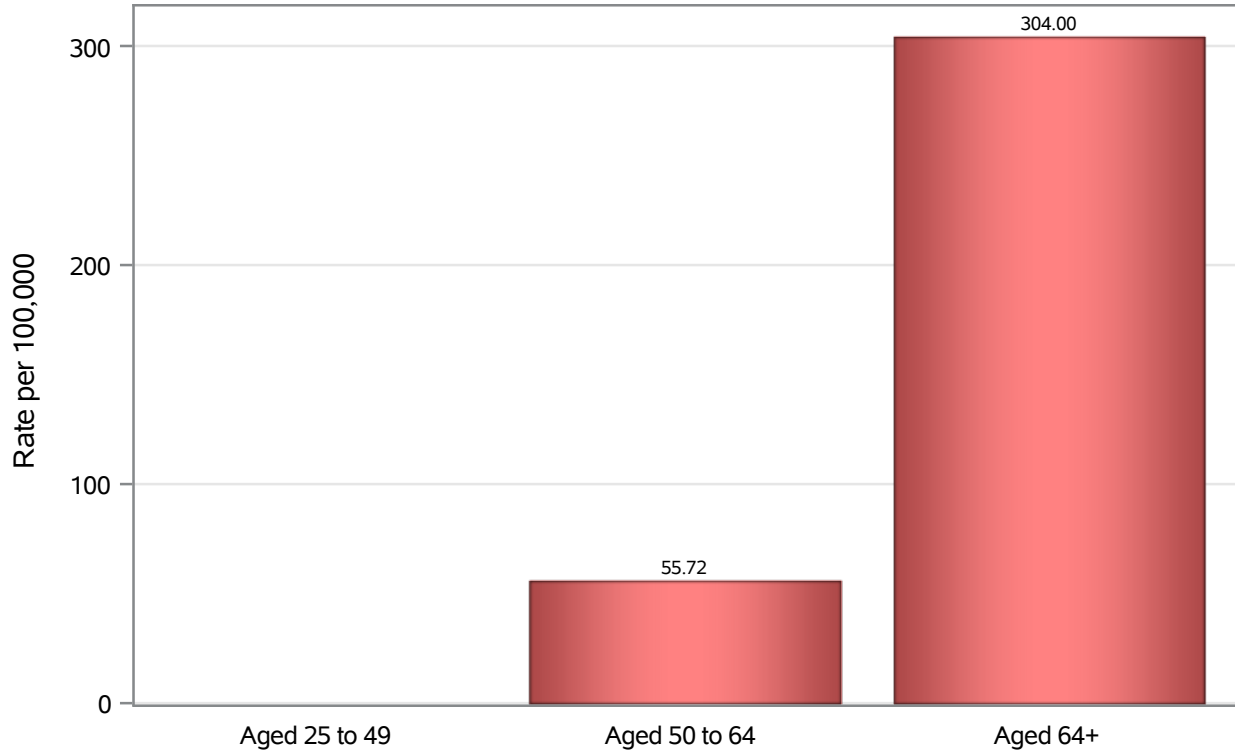


Investigations are ongoing; data are subject to change.

Reporting through 28OCT2020

Henderson zip codes include 89002, 89011, 89012, 89014, 89015, 89044, 89052, 89074.

### Death Age Rates in Henderson



Investigations are ongoing; data are subject to change.

Reporting through 28OCT2020

Henderson zip codes include 89002, 89011, 89012, 89014, 89015, 89044, 89052, 89074.

**Table 5: Age and COVID19 in Henderson**

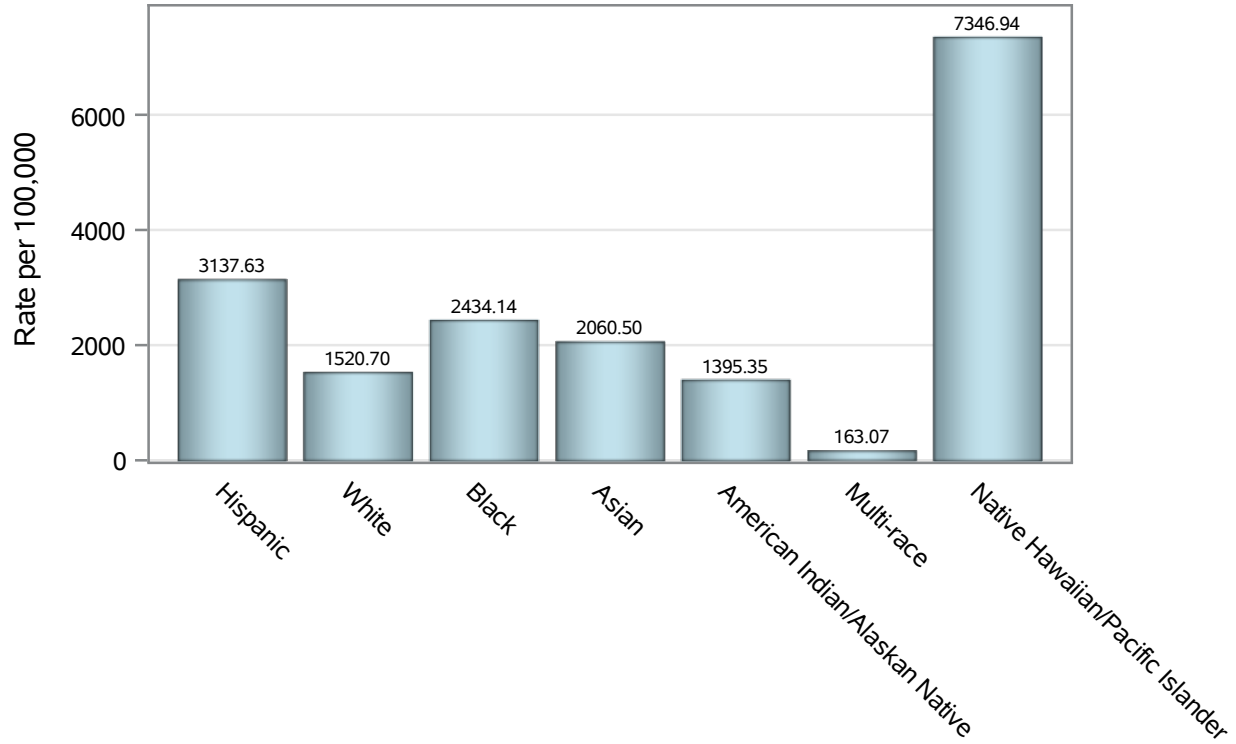
Case Status	Age Categories	N	%	Population	Rate per 100,000
Cases	Aged 4 or less	101	1.4	15,406	655.59
	Aged 5 to 17	409	5.6	48,862	837.05
	Aged 18 to 24	808	11.1	21,085	3832.1
	Aged 25 to 49	3353	46.1	99,735	3361.9
	Aged 50 to 64	1473	20.3	61,022	2413.9
	Aged 64+	1124	15.5	56,579	1986.6
Hospitalizations	Aged 4 or less	3	0.4	15,406	.
	Aged 5 to 17	5	0.7	48,862	.
	Aged 18 to 24	13	1.7	21,085	61.66
	Aged 25 to 49	165	21.7	99,735	165.44
	Aged 50 to 64	183	24.0	61,022	299.89
	Aged 64+	393	51.6	56,579	694.60
Deaths	Aged 25 to 49	5	2.4	99,735	.
	Aged 50 to 64	34	16.1	61,022	55.72
	Aged 64+	172	81.5	56,579	304.00

Note1: Population data source for calculating rate estimates: U.S. Census Bureau, ACS 5-year estimate.

Note2: Rates for categories with fewer than 12 cases are suppressed due to high relative standard error.

Note3: Hospitalizations are regardless of deceased status; Deaths are regardless of hospitalization status

### Case Race/Ethnicity Rates in Henderson

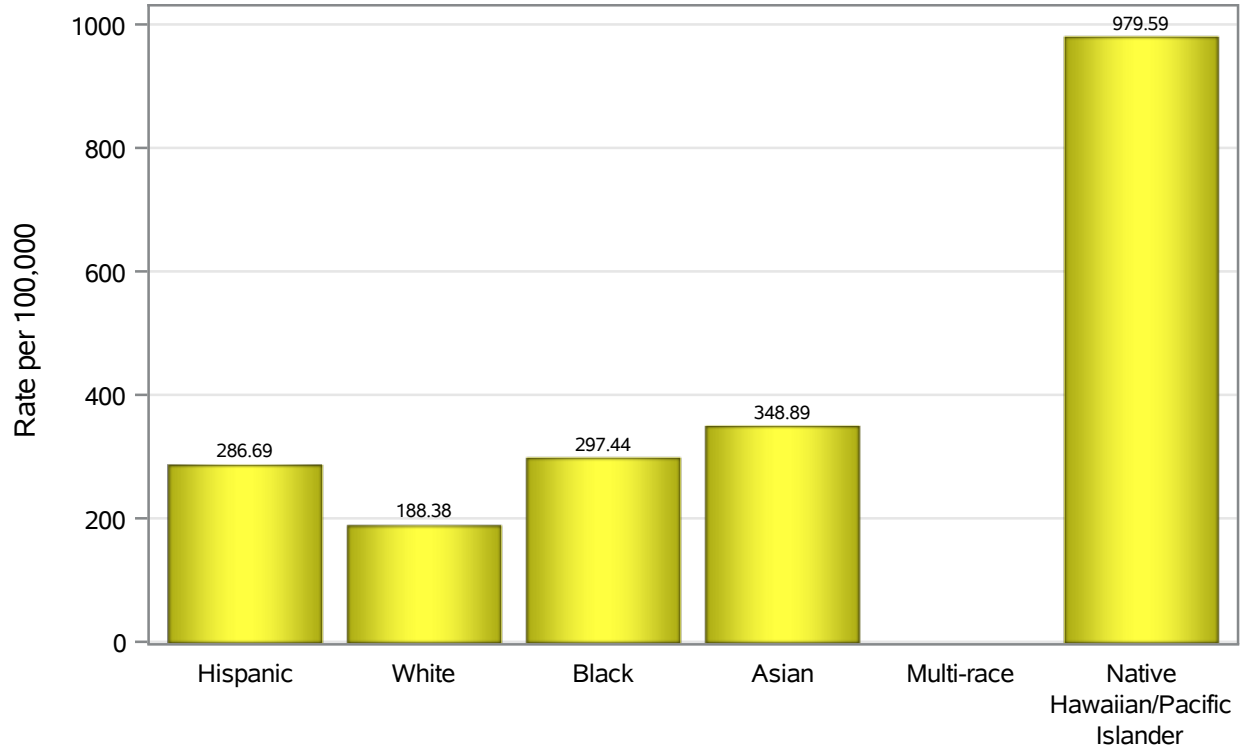


Investigations are ongoing; data are subject to change.

Reporting through 28OCT2020

Henderson zip codes include 89002, 89011, 89012, 89014, 89015, 89044, 89052, 89074.

### Hospitalization Race/Ethnicity Rates in Henderson

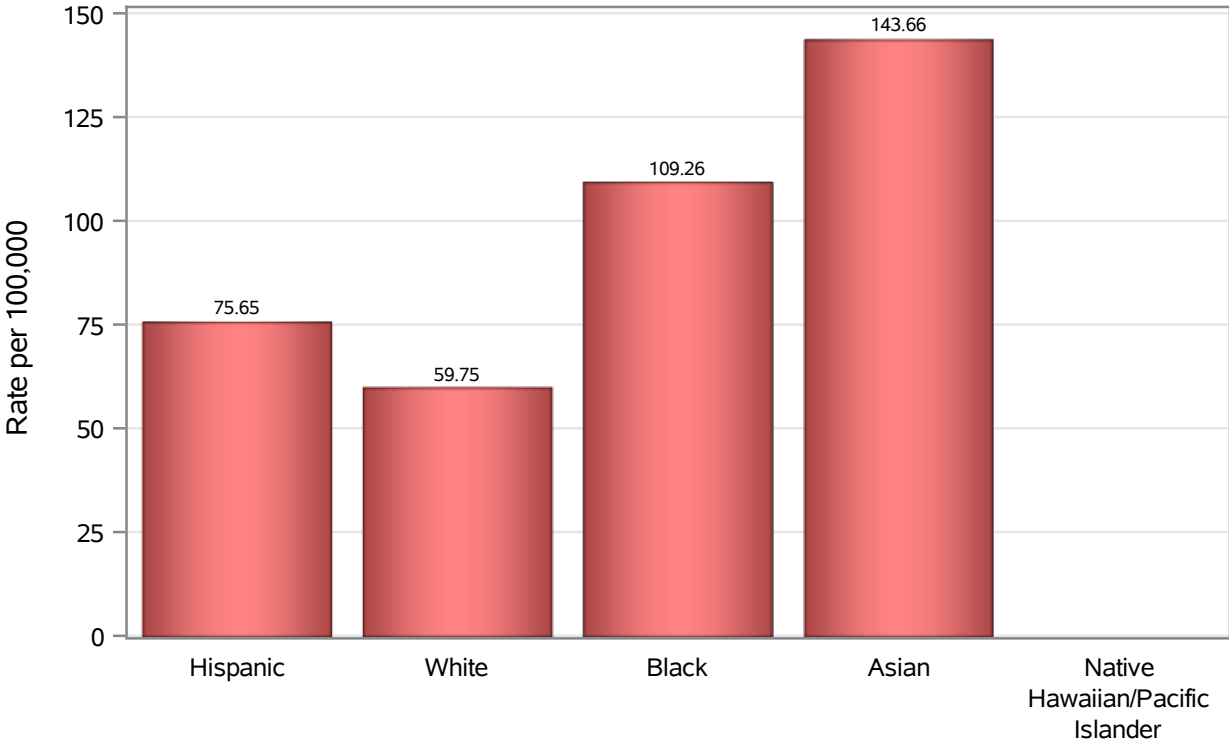


Investigations are ongoing; data are subject to change.

Reporting through 28OCT2020

Henderson zip codes include 89002, 89011, 89012, 89014, 89015, 89044, 89052, 89074.

### Death Race/Ethnicity Rates in Henderson



Investigations are ongoing; data are subject to change.

Reporting through 28OCT2020

Henderson zip codes include 89002, 89011, 89012, 89014, 89015, 89044, 89052, 89074.

**Table 6: Race/Ethnicity and COVID19 in Henderson**

Case Status	Race Ethnicity Categories	N	%	Population	Rate per 100,000
Cases	Hispanic	1576	21.7	50,229	3137.6
	White	3003	41.3	197475	1520.7
	Black	401	5.5	16,474	2434.1
	Asian	502	6.9	24,363	2060.5
	American Indian/Alaskan Native	15	0.2	1,075	1395.3
	Multi-race	18	0.2	11,038	163.07
	Native Hawaiian/Pacific Islander	90	1.2	1,225	7346.9
	Unknown	1663	22.9	.	.
Hospitalizations	Hispanic	144	18.9	50,229	286.69
	White	372	48.8	197475	188.38
	Black	49	6.4	16,474	297.44
	Asian	85	11.2	24,363	348.89
	Multi-race	4	0.5	11,038	.
	Native Hawaiian/Pacific Islander	12	1.6	1,225	979.59
	Unknown	96	12.6	.	.
	Deaths	Hispanic	38	18.0	50,229
White		118	55.9	197475	59.75
Black		18	8.5	16,474	109.26
Asian		35	16.6	24,363	143.66
Native Hawaiian/Pacific Islander		1	0.5	1,225	.
Unknown		1	0.5	.	.

Note1: Population data source for calculating rate estimates: U.S. Census Bureau, ACS 5-year estimate.

Note2: Rates for categories with fewer than 12 cases are suppressed due to high relative standard error.

Note3: Hospitalizations are regardless of deceased status; Deaths are regardless of hospitalization status

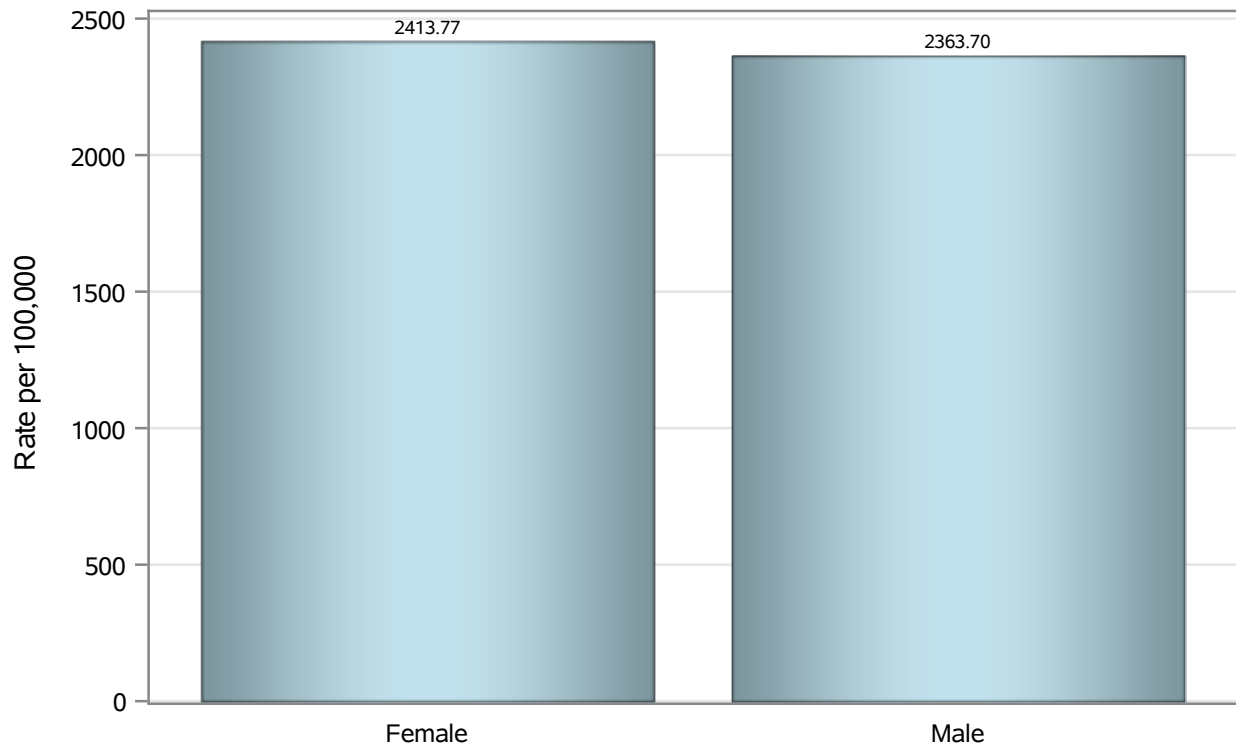
**Investigations are ongoing; data are subject to change.**

**Reporting through 28OCT2020**

**Henderson zip codes include 89002, 89011, 89012, 89014, 89015, 89044, 89052, 89074.**



### Case Birth Sex Rates in Henderson

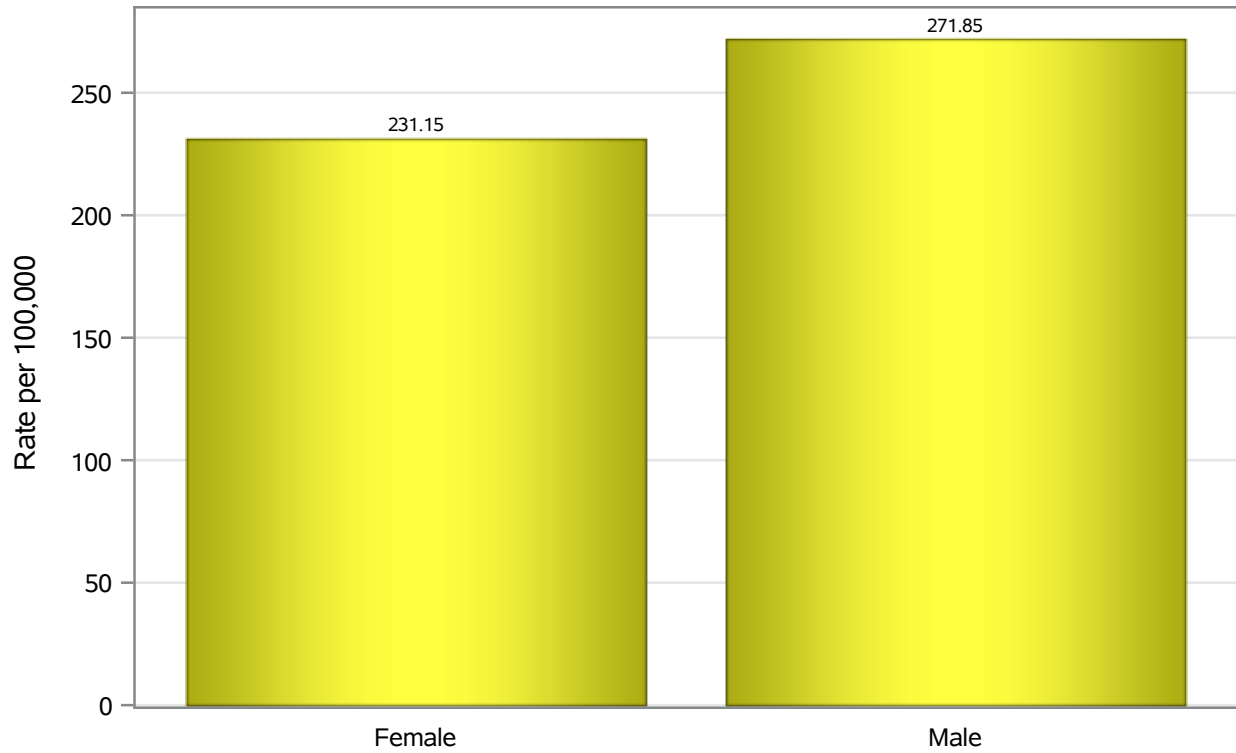


Investigations are ongoing; data are subject to change.

Reporting through 28OCT2020

Henderson zip codes include 89002, 89011, 89012, 89014, 89015, 89044, 89052, 89074.

### Hospitalization Birth Sex Rates in Henderson

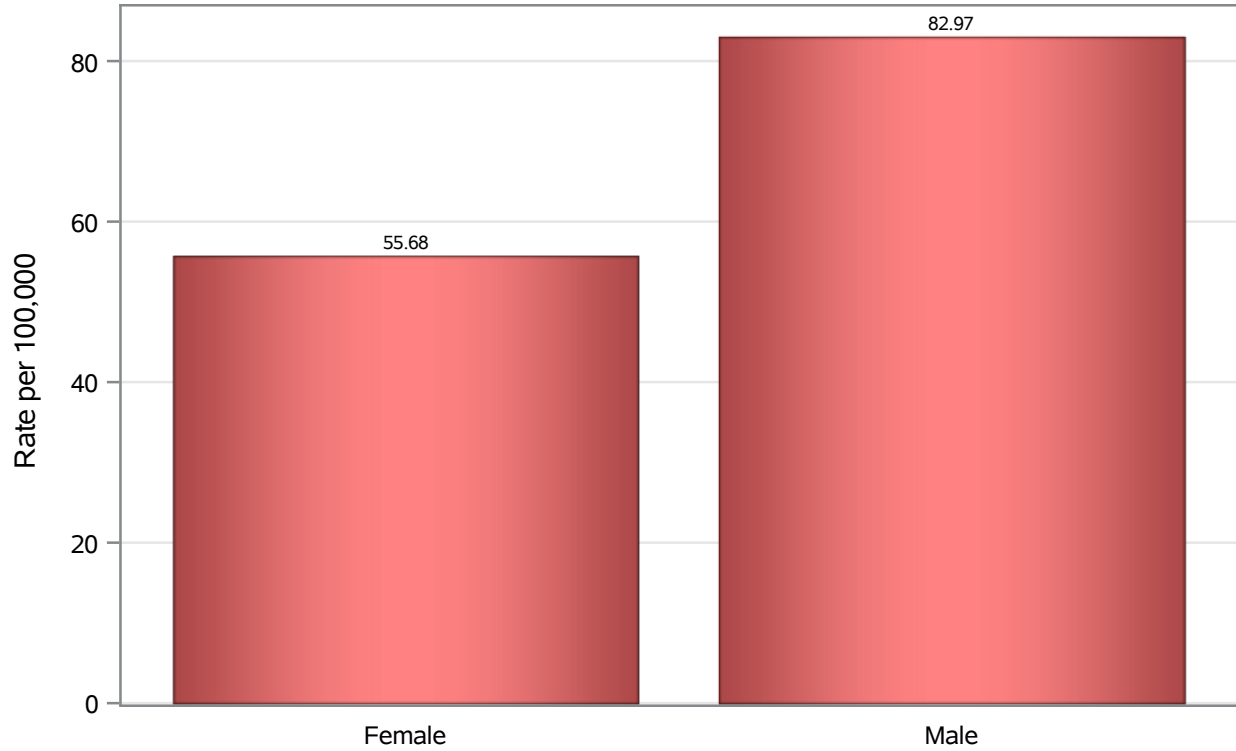


Investigations are ongoing; data are subject to change.

Reporting through 28OCT2020

Henderson zip codes include 89002, 89011, 89012, 89014, 89015, 89044, 89052, 89074.

### Death Birth Sex Rates in Henderson



Investigations are ongoing; data are subject to change.

Reporting through 28OCT2020

Henderson zip codes include 89002, 89011, 89012, 89014, 89015, 89044, 89052, 89074.

**Table 7: Birth Sex and COVID19 in Henderson**

Case Status	Birth Sex Categories	N	%	Population	Rate per 100,000
Cases	Female	3728	51.3	154447	2413.8
	Male	3504	48.2	148242	2363.7
	Unknown	36	0.5	.	.
Hospitalizations	Female	357	46.9	154447	231.15
	Male	403	52.9	148242	271.85
	Unknown	2	0.3	.	.
Deaths	Female	86	40.8	154447	55.68
	Male	123	58.3	148242	82.97
	Unknown	2	0.9	.	.

---

Note1: Population data source for calculating rate estimates: U.S. Census Bureau, ACS 5-year estimate.

Note2: Rates for categories with fewer than 12 cases are suppressed due to high relative standard error.

Note3: Hospitalizations are regardless of deceased status; Deaths are regardless of hospitalization status

---