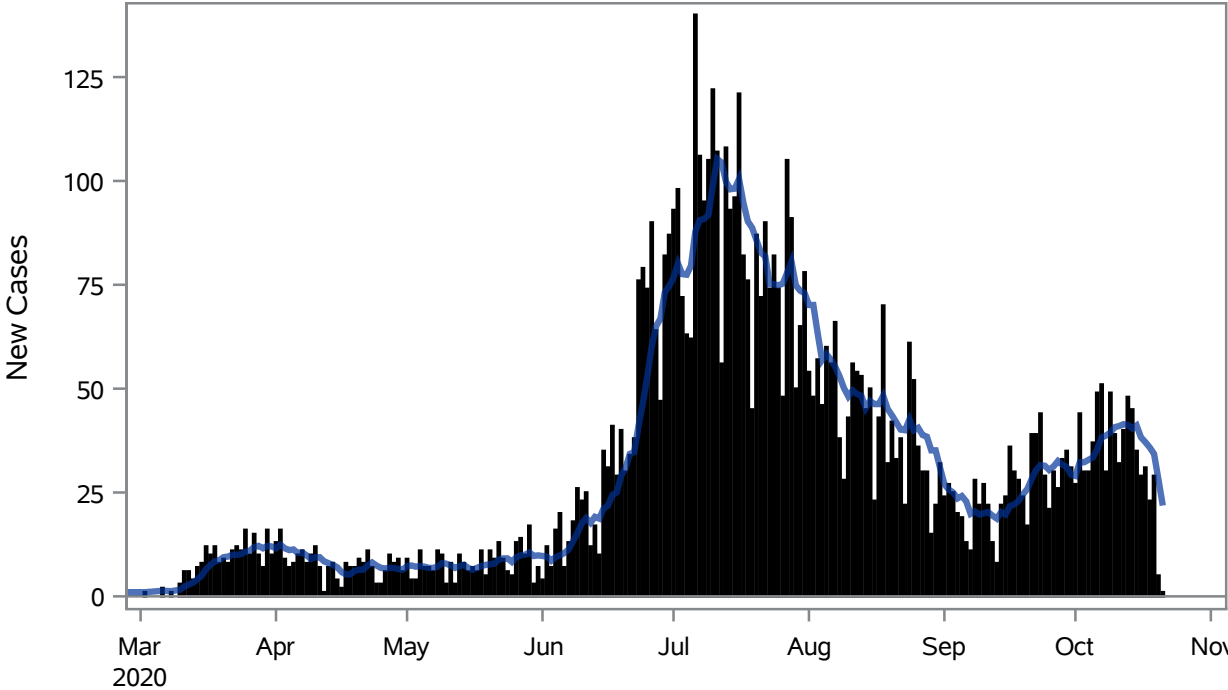


COVID19 Cases for Henderson, 7-Day Moving Average



■ New Cases — 7-Day Moving Average

Investigations are ongoing; data are subject to change.

Reporting through 21OCT2020

Henderson zip codes include 89002, 89011, 89012, 89014, 89015, 89044, 89052, 89074.

Table 1: New COVID19 Cases and 7-Day Moving Average in Henderson, Previous Two Weeks

Date (Daily)	New Cases	7-Day Moving Average
08OCT2020	30	38.71
09OCT2020	49	39.43
10OCT2020	39	40.71
11OCT2020	32	41.00
12OCT2020	40	41.43
13OCT2020	48	41.29
14OCT2020	45	40.43
15OCT2020	35	41.14
16OCT2020	29	38.29
17OCT2020	31	37.14
18OCT2020	23	35.86
19OCT2020	29	34.29

Note1: Event Date is calculated as follows based on completed information:

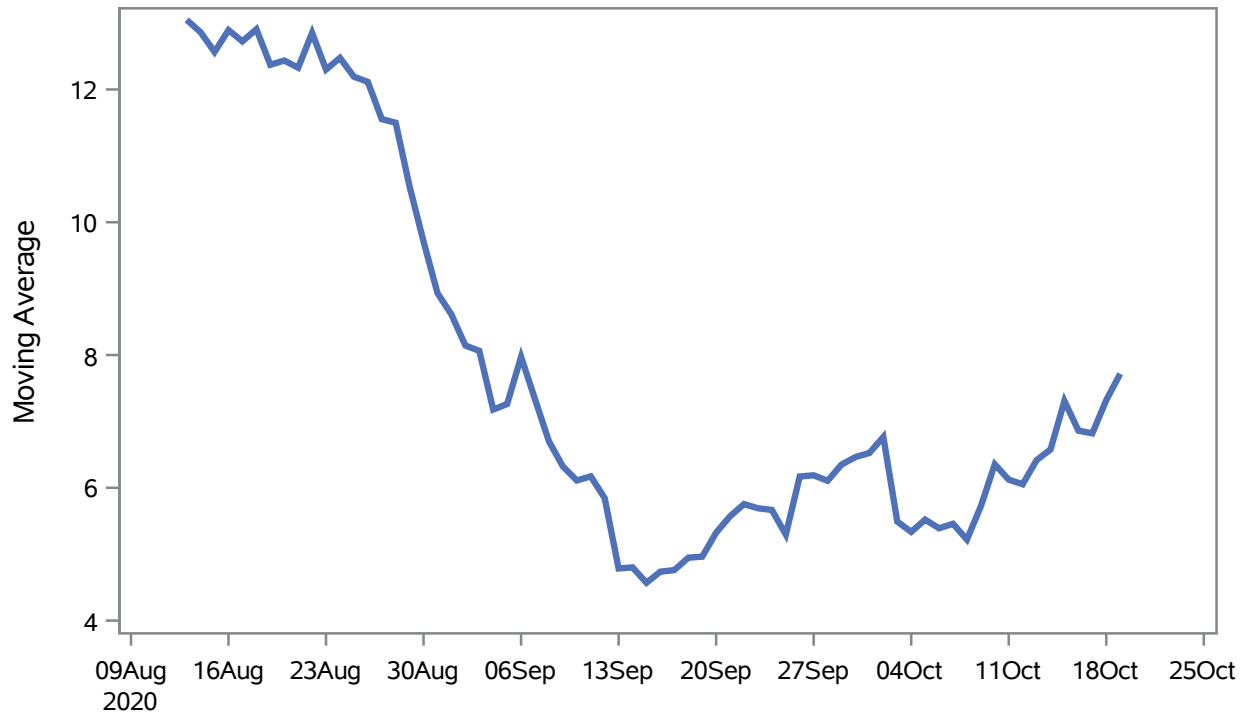
1) Disease onset date 2) Disease diagnosis date 3) Lab result collection date 4) Report date to SNHD.

Investigations are ongoing; data are subject to change.

Reporting through 21OCT2020

Henderson zip codes include 89002, 89011, 89012, 89014, 89015, 89044, 89052, 89074.

Percent of People Receiving COVID-19 Viral Tests Who Have Positive Results in Henderson



Investigations are ongoing; data are subject to change.

Reporting through 21OCT2020

Henderson zip codes include 89002, 89011, 89012, 89014, 89015, 89044, 89052, 89074.

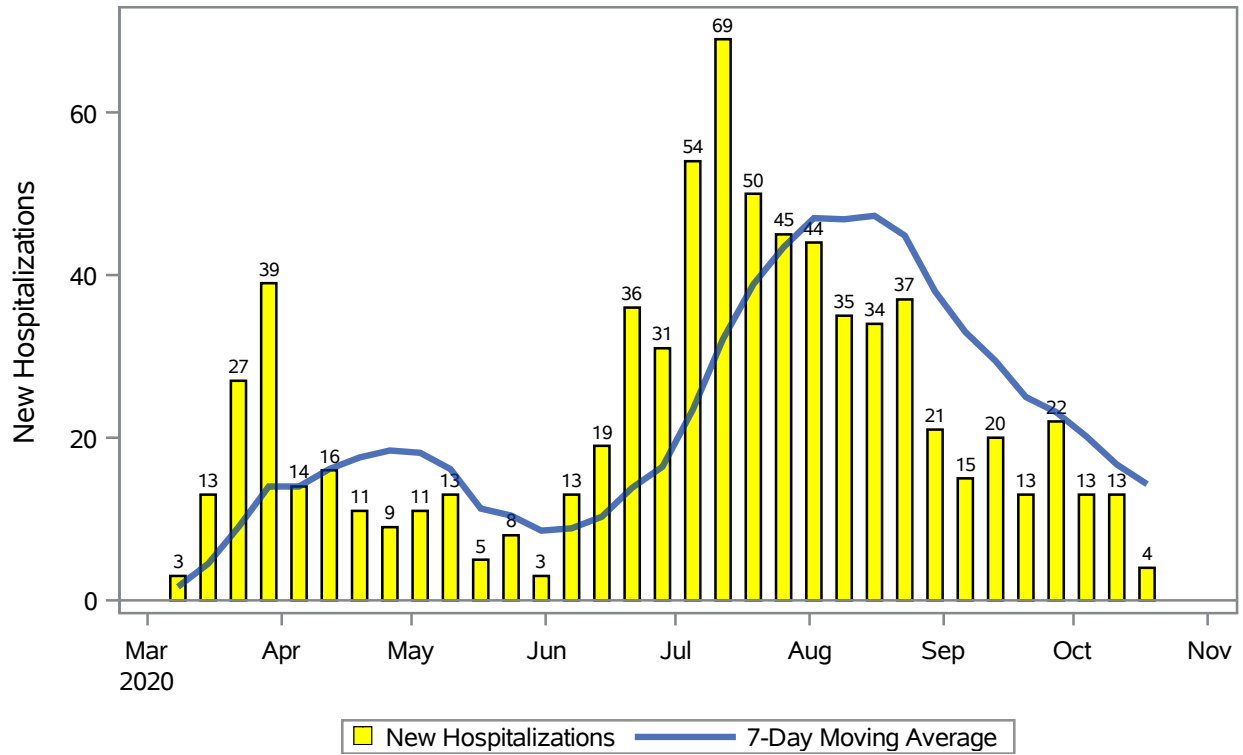
Table 2: Percent of People Receiving COVID-19 Viral Tests Who Have Positive Results in Henderson

Collection Date	Positive	Negative	Equivocal	Total	% Positivity	7-Day Moving Average
05OCT2020	39	627	0	666	5.86	5.52
06OCT2020	51	973	0	1024	4.98	5.39
07OCT2020	50	825	0	875	5.71	5.46
08OCT2020	44	1037	0	1081	4.07	5.22
09OCT2020	66	673	0	739	8.93	5.72
10OCT2020	44	470	0	514	8.56	6.35
11OCT2020	15	301	0	316	4.75	6.12
12OCT2020	32	564	0	596	5.37	6.05
13OCT2020	73	897	0	970	7.53	6.42
14OCT2020	63	856	2	921	6.84	6.58
15OCT2020	74	731	1	806	9.18	7.31
16OCT2020	44	714	0	758	5.80	6.86
17OCT2020	46	510	0	556	8.27	6.82
18OCT2020	41	456	0	497	8.25	7.32
19OCT2020	51	575	0	626	8.15	7.72

Note: Testing Data includes a 3 day delay

**Investigations are ongoing; data are subject to change.
Reporting through 21OCT2020
Henderson zip codes include 89002, 89011, 89012, 89014, 89015, 89044, 89052, 89074.**

COVID19 Hospitalizations for Henderson, 7-Day Moving Average



Investigations are ongoing; data are subject to change.

Reporting through 21OCT2020

Henderson zip codes include 89002, 89011, 89012, 89014, 89015, 89044, 89052, 89074.

Table 3: New COVID19-Related Hospitalizations and 7-Day Moving Average in Henderson, previous month

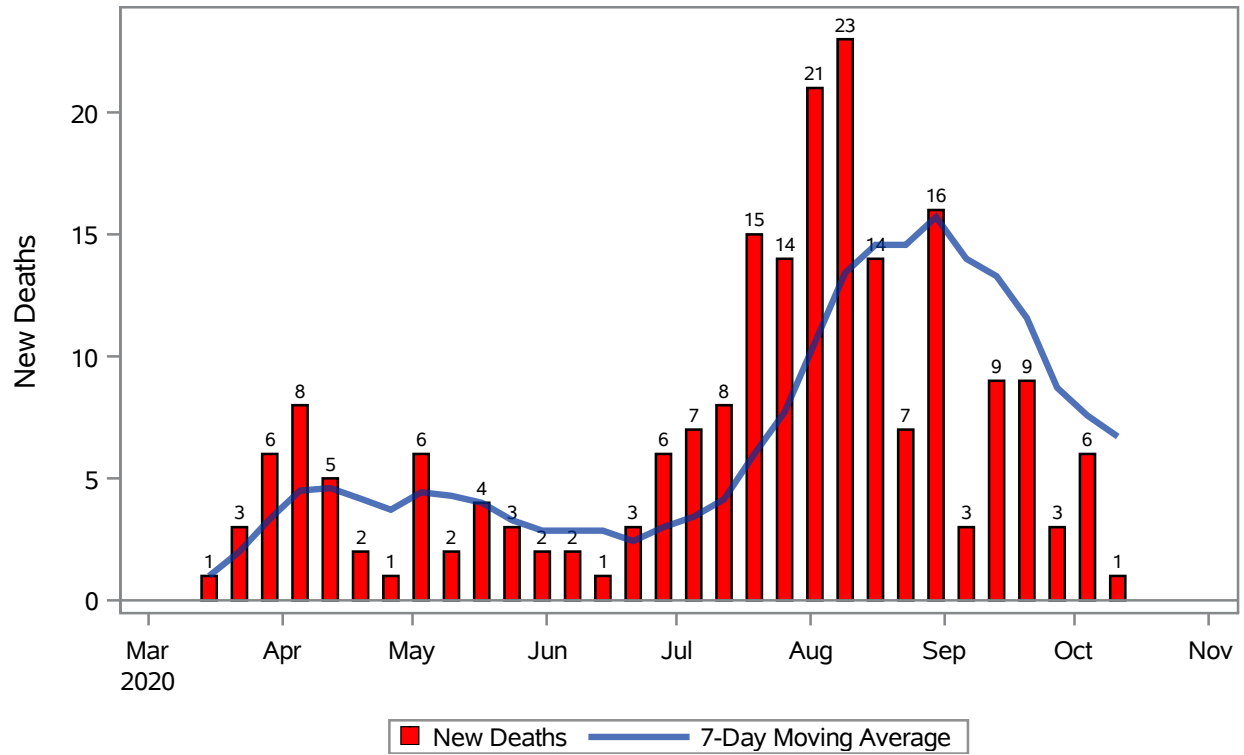
Week	Hospitalizations	7-Day Moving Average
27SEP2020	22	23.1
04OCT2020	13	20.1
11OCT2020	13	16.7
18OCT2020	4	14.3

Note1: Admission Date is calculated as follows based on completed information:
A) COVID19 Case is hospitalized B) COVID19 Case has a hospital admission date.

If admission date is missing, then the following is substituted temporarily, in order:
1) Disease onset date 2) Disease diagnosis date 3) Lab result collection date 4) Report date to SNHD.

**Investigations are ongoing; data are subject to change.
Reporting through 21OCT2020
Henderson zip codes include 89002, 89011, 89012, 89014, 89015, 89044, 89052, 89074.**

COVID19 Deaths for Henderson, 7-Day Moving Average



Investigations are ongoing; data are subject to change.

Reporting through 21OCT2020

Henderson zip codes include 89002, 89011, 89012, 89014, 89015, 89044, 89052, 89074.

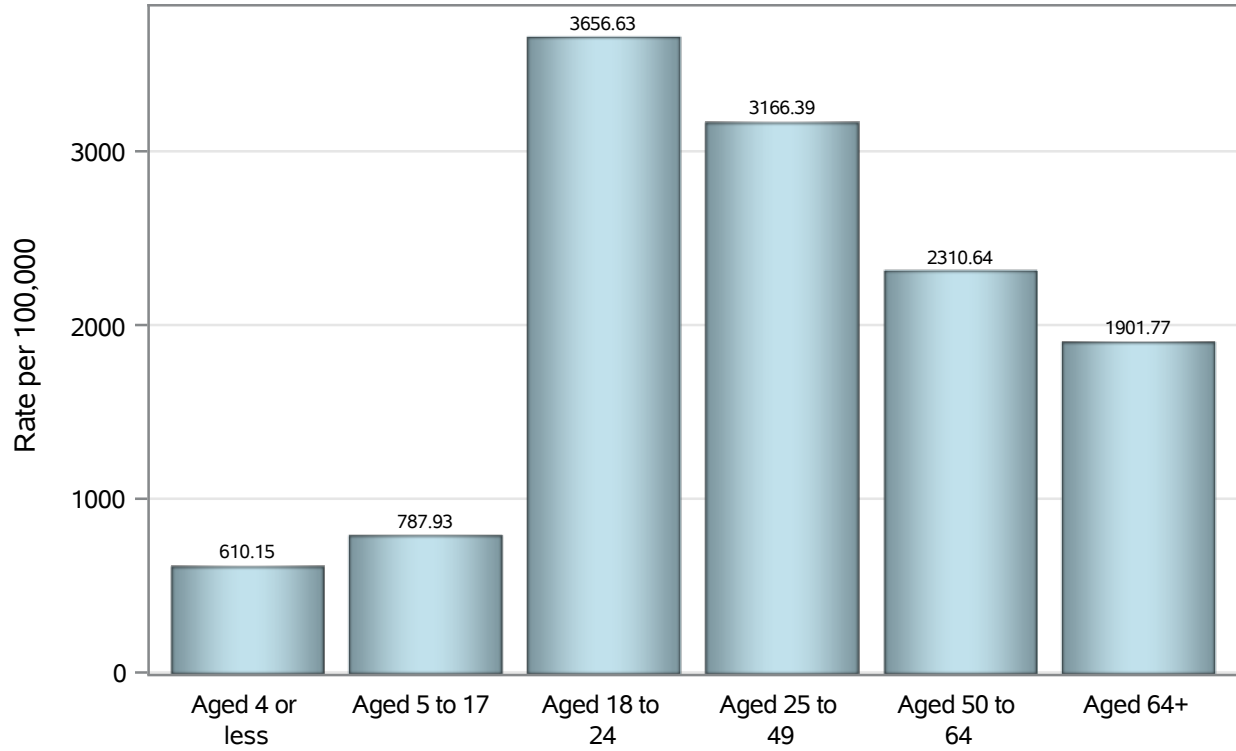
Table 4: New COVID19-Related Deaths and 7-Day Moving Average in Henderson, Previous Month

Week	Deaths	7-Day Moving Average
27SEP2020	3	8.71
04OCT2020	6	7.57
11OCT2020	1	6.71

Note1: Date of Death is calculated as follows based on completed information:
A) COVID19 Case is reported as deceased B) COVID19 Case has a reported date of death.

If date of death is missing, then the following is substituted temporarily, in order:
1) Disease onset date 2) Disease diagnosis date
3) Lab result collection date 4) Report date to SNHD.

Case Age Rates in Henderson

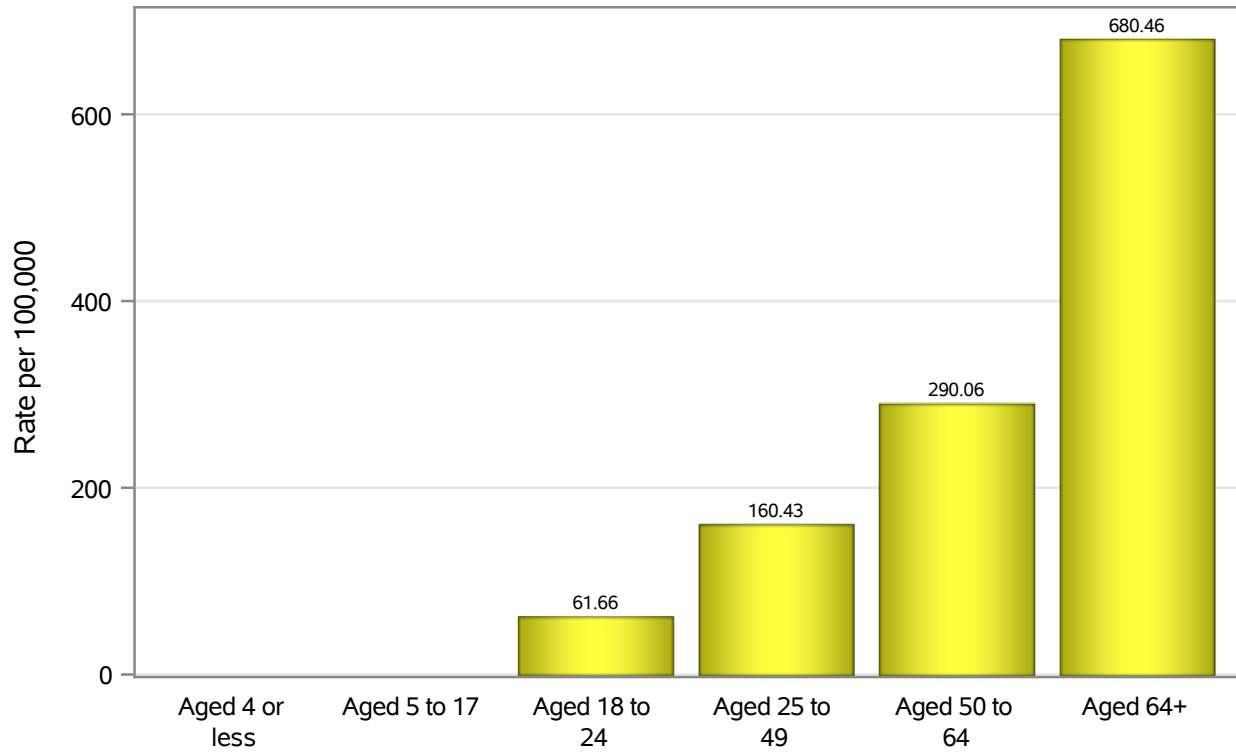


Investigations are ongoing; data are subject to change.

Reporting through 21OCT2020

Henderson zip codes include 89002, 89011, 89012, 89014, 89015, 89044, 89052, 89074.

Hospitalization Age Rates in Henderson

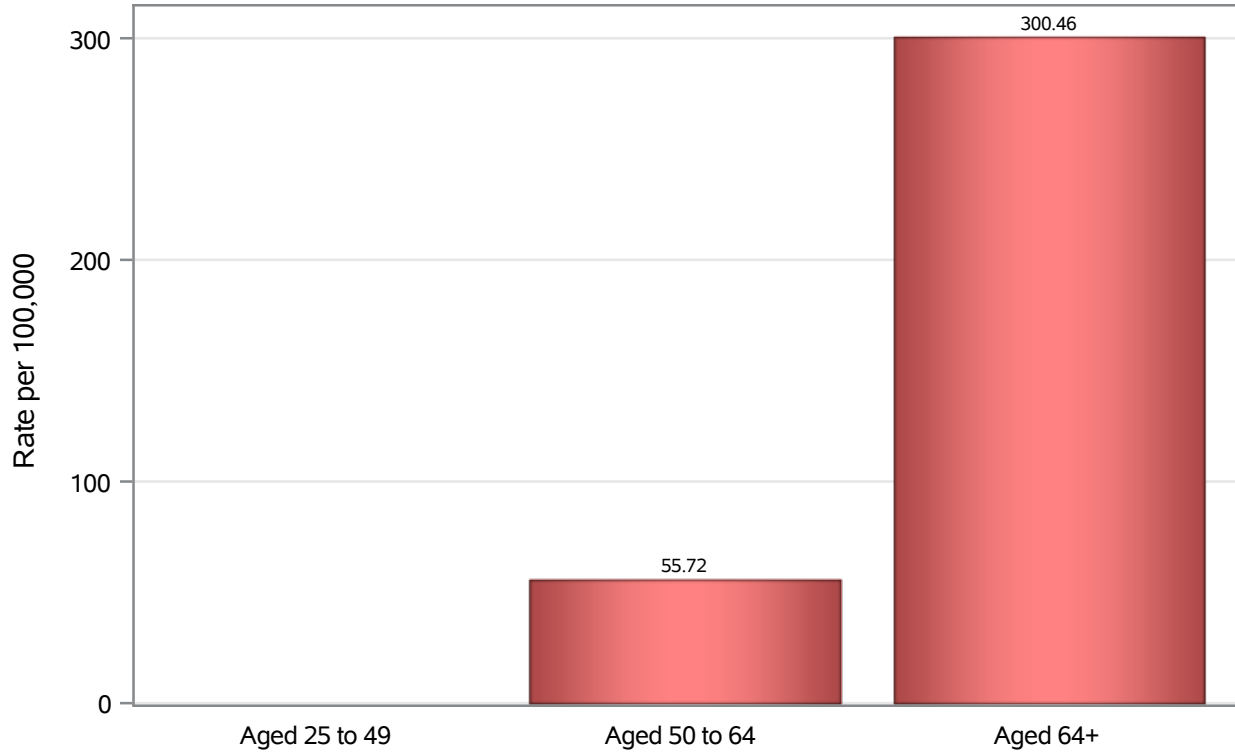


Investigations are ongoing; data are subject to change.

Reporting through 21OCT2020

Henderson zip codes include 89002, 89011, 89012, 89014, 89015, 89044, 89052, 89074.

Death Age Rates in Henderson



Investigations are ongoing; data are subject to change.

Reporting through 21OCT2020

Henderson zip codes include 89002, 89011, 89012, 89014, 89015, 89044, 89052, 89074.

Table 5: Age and COVID19 in Henderson

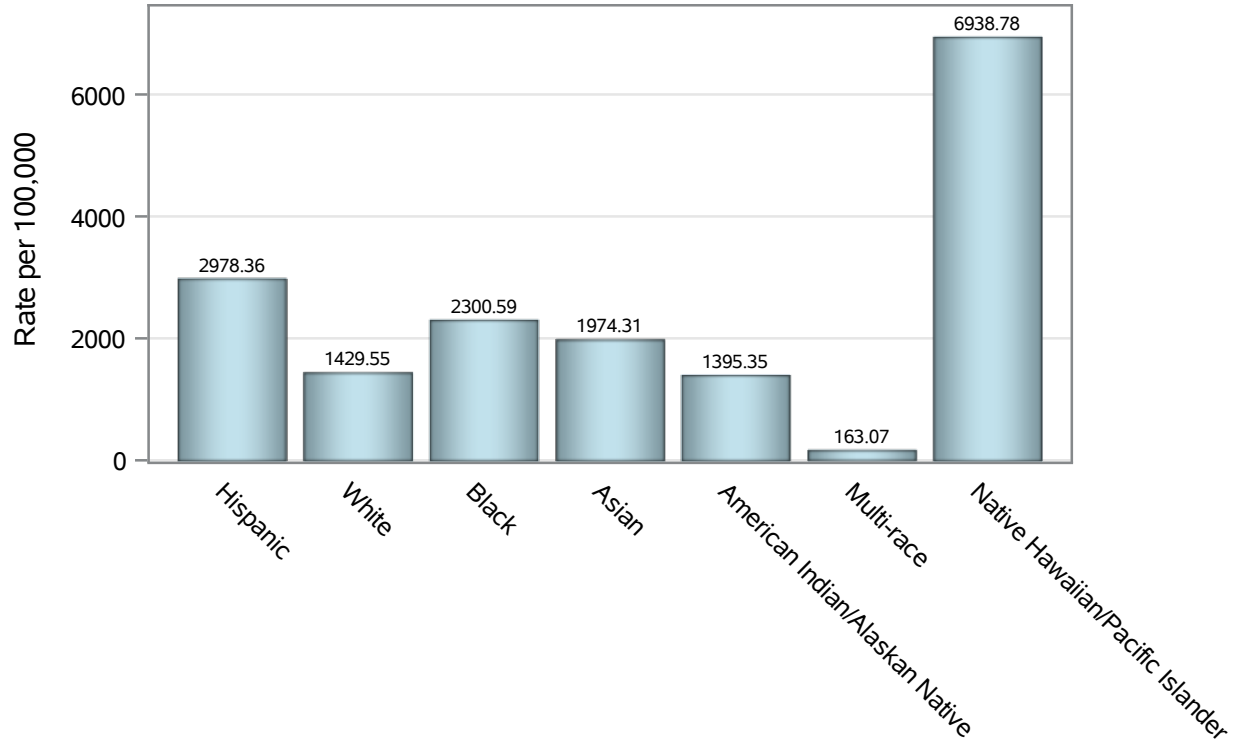
Case Status	Age Categories	N	%	Population	Rate per 100,000
Cases	Aged 4 or less	94	1.4	15,406	610.15
	Aged 5 to 17	385	5.6	48,862	787.93
	Aged 18 to 24	771	11.2	21,085	3656.6
	Aged 25 to 49	3158	45.8	99,735	3166.4
	Aged 50 to 64	1410	20.5	61,022	2310.6
	Aged 64+	1076	15.6	56,579	1901.8
Hospitalizations	Aged 4 or less	3	0.4	15,406	.
	Aged 5 to 17	4	0.5	48,862	.
	Aged 18 to 24	13	1.8	21,085	61.66
	Aged 25 to 49	160	21.6	99,735	160.43
	Aged 50 to 64	177	23.9	61,022	290.06
	Aged 64+	385	51.9	56,579	680.46
Deaths	Aged 25 to 49	5	2.4	99,735	.
	Aged 50 to 64	34	16.3	61,022	55.72
	Aged 64+	170	81.3	56,579	300.46

Note1: Population data source for calculating rate estimates: U.S. Census Bureau, ACS 5-year estimate.

Note2: Rates for categories with fewer than 12 cases are suppressed due to high relative standard error.

Note3: Hospitalizations are regardless of deceased status; Deaths are regardless of hospitalization status

Case Race/Ethnicity Rates in Henderson

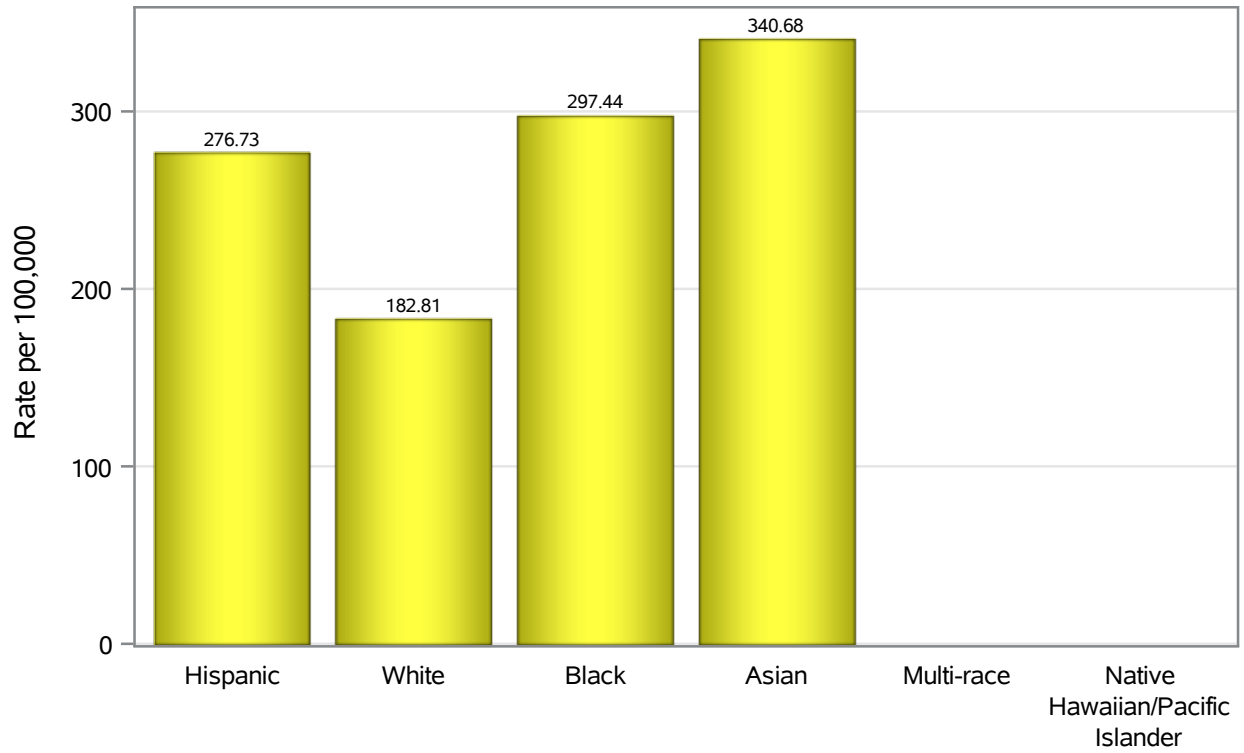


Investigations are ongoing; data are subject to change.

Reporting through 21OCT2020

Henderson zip codes include 89002, 89011, 89012, 89014, 89015, 89044, 89052, 89074.

Hospitalization Race/Ethnicity Rates in Henderson

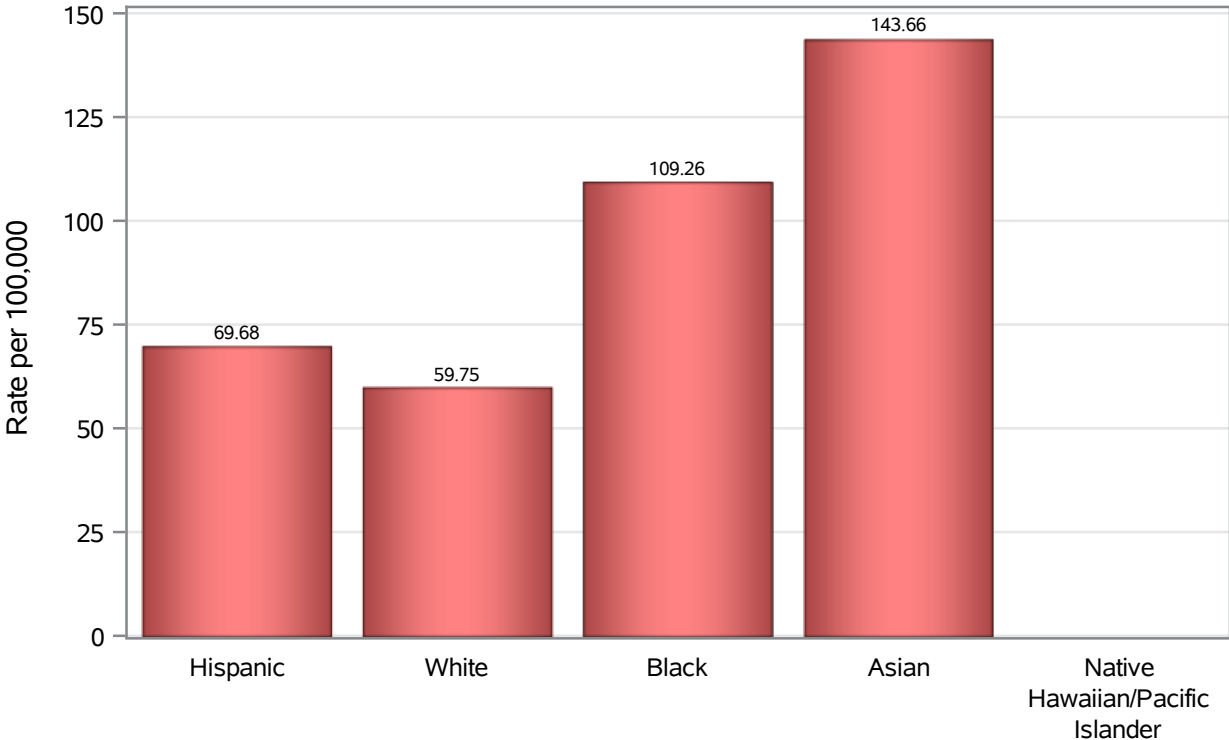


Investigations are ongoing; data are subject to change.

Reporting through 21OCT2020

Henderson zip codes include 89002, 89011, 89012, 89014, 89015, 89044, 89052, 89074.

Death Race/Ethnicity Rates in Henderson



Investigations are ongoing; data are subject to change.

Reporting through 21OCT2020

Henderson zip codes include 89002, 89011, 89012, 89014, 89015, 89044, 89052, 89074.

Table 6: Race/Ethnicity and COVID19 in Henderson

Case Status	Race Ethnicity Categories	N	%	Population	Rate per 100,000
Cases	Hispanic	1496	21.7	50,229	2978.4
	White	2823	40.9	197475	1429.5
	Black	379	5.5	16,474	2300.6
	Asian	481	7.0	24,363	1974.3
	American Indian/Alaskan Native	15	0.2	1,075	1395.3
	Multi-race	18	0.3	11,038	163.07
	Native Hawaiian/Pacific Islander	85	1.2	1,225	6938.8
	Unknown	1597	23.2	.	.
Hospitalizations	Hispanic	139	18.7	50,229	276.73
	White	361	48.7	197475	182.81
	Black	49	6.6	16,474	297.44
	Asian	83	11.2	24,363	340.68
	Multi-race	4	0.5	11,038	.
	Native Hawaiian/Pacific Islander	10	1.3	1,225	.
	Unknown	96	12.9	.	.
	Deaths	Hispanic	35	16.7	50,229
White		118	56.5	197475	59.75
Black		18	8.6	16,474	109.26
Asian		35	16.7	24,363	143.66
Native Hawaiian/Pacific Islander		1	0.5	1,225	.
Unknown		2	1.0	.	.

Note1: Population data source for calculating rate estimates: U.S. Census Bureau, ACS 5-year estimate.

Note2: Rates for categories with fewer than 12 cases are suppressed due to high relative standard error.

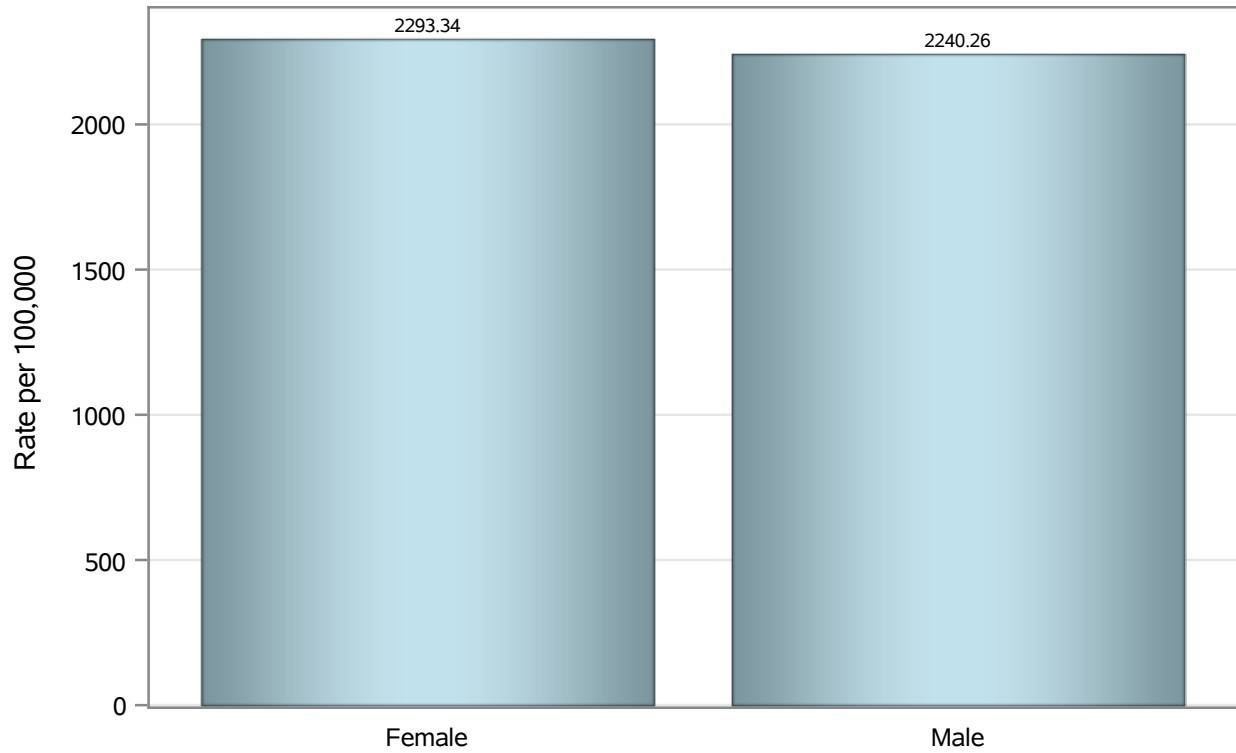
Note3: Hospitalizations are regardless of deceased status; Deaths are regardless of hospitalization status

Investigations are ongoing; data are subject to change.

Reporting through 21OCT2020

Henderson zip codes include 89002, 89011, 89012, 89014, 89015, 89044, 89052, 89074.

Case Birth Sex Rates in Henderson

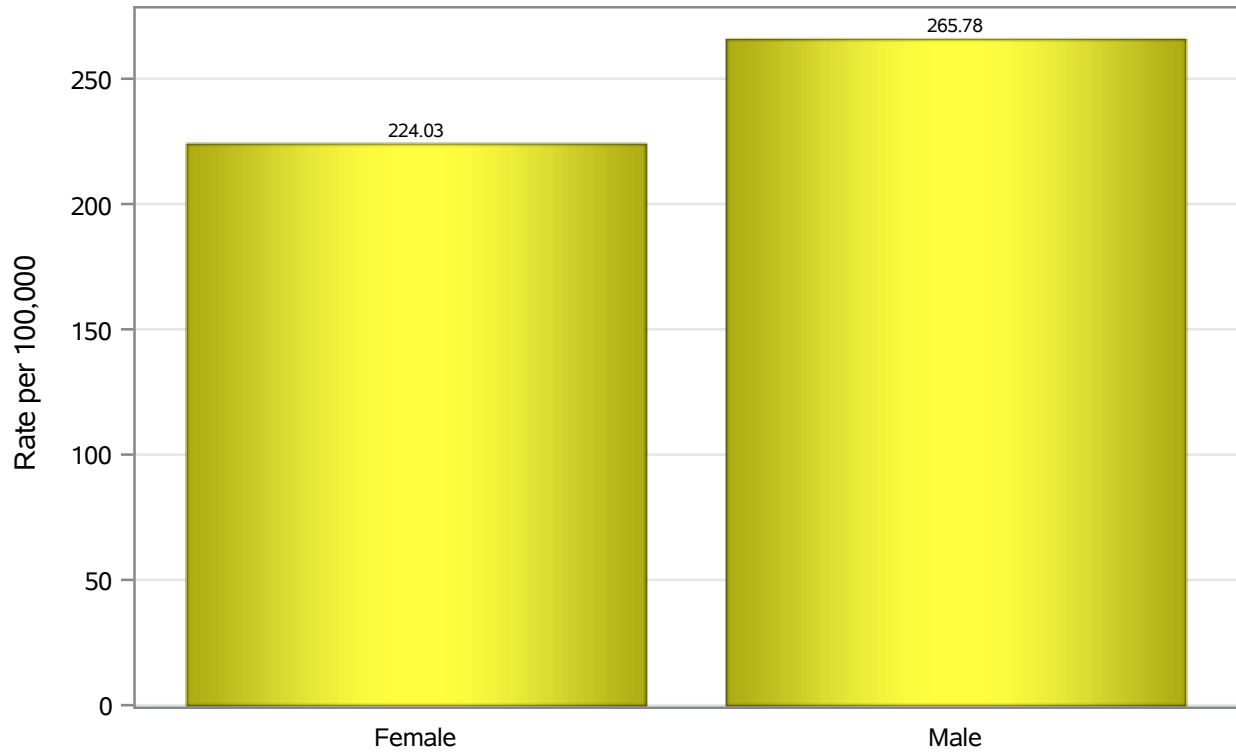


Investigations are ongoing; data are subject to change.

Reporting through 21OCT2020

Henderson zip codes include 89002, 89011, 89012, 89014, 89015, 89044, 89052, 89074.

Hospitalization Birth Sex Rates in Henderson

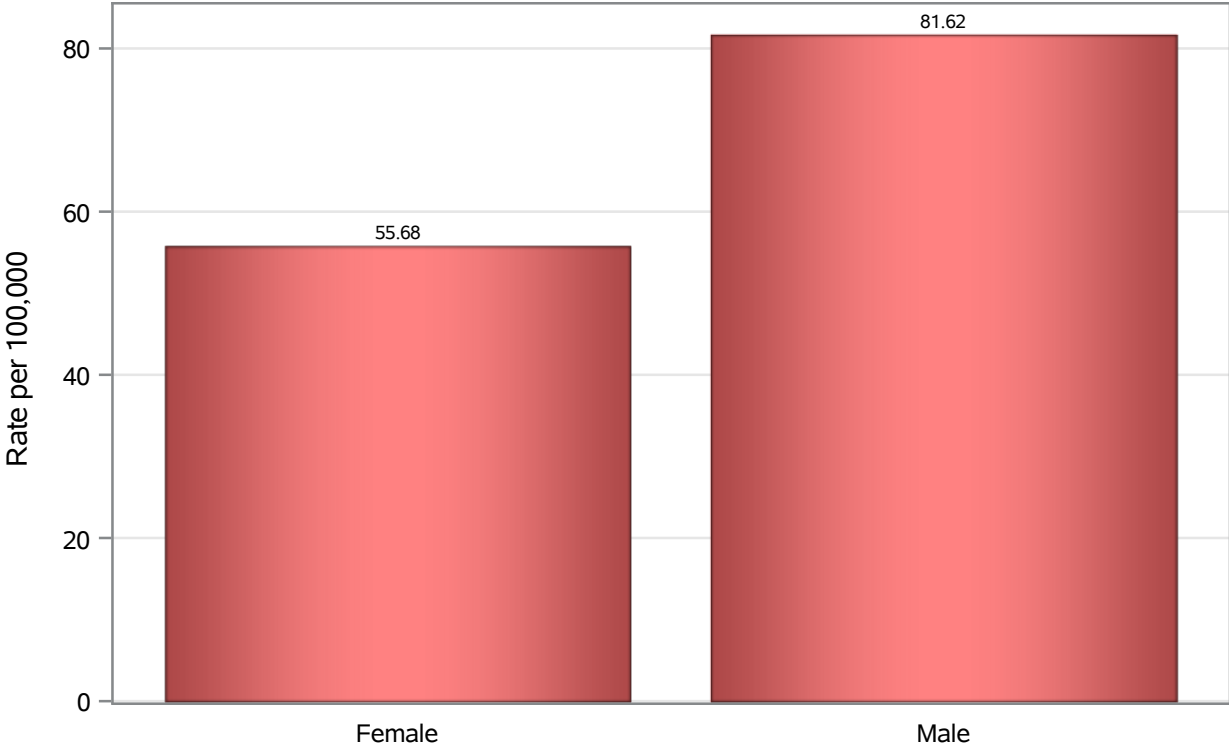


Investigations are ongoing; data are subject to change.

Reporting through 21OCT2020

Henderson zip codes include 89002, 89011, 89012, 89014, 89015, 89044, 89052, 89074.

Death Birth Sex Rates in Henderson



Investigations are ongoing; data are subject to change.
Reporting through 21OCT2020

Henderson zip codes include 89002, 89011, 89012, 89014, 89015, 89044, 89052, 89074.

Table 7: Birth Sex and COVID19 in Henderson

Case Status	Birth Sex Categories	N	%	Population	Rate per 100,000
Cases	Female	3542	51.4	154447	2293.3
	Male	3321	48.2	148242	2240.3
	Unknown	31	0.4	.	.
Hospitalizations	Female	346	46.6	154447	224.03
	Male	394	53.1	148242	265.78
	Unknown	2	0.3	.	.
Deaths	Female	86	41.1	154447	55.68
	Male	121	57.9	148242	81.62
	Unknown	2	1.0	.	.

Note1: Population data source for calculating rate estimates: U.S. Census Bureau, ACS 5-year estimate.

Note2: Rates for categories with fewer than 12 cases are suppressed due to high relative standard error.

Note3: Hospitalizations are regardless of deceased status; Deaths are regardless of hospitalization status

Investigations are ongoing; data are subject to change.

Reporting through 21OCT2020

Henderson zip codes include 89002, 89011, 89012, 89014, 89015, 89044, 89052, 89074.