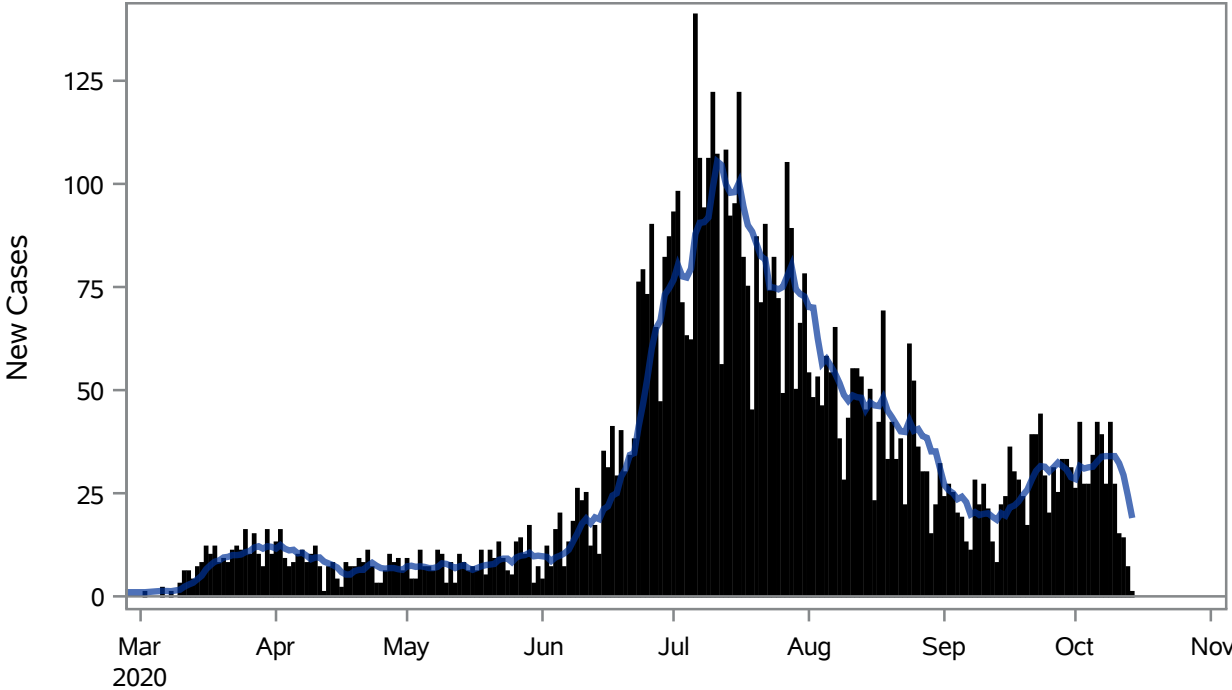


COVID19 Cases for Henderson, 7-Day Moving Average



■ New Cases — 7-Day Moving Average

Investigations are ongoing; data are subject to change.

Reporting through 14OCT2020

Henderson zip codes include 89002, 89011, 89012, 89014, 89015, 89044, 89052, 89074.

Table 1: New COVID19 Cases and 7-Day Moving Average in Henderson, Previous Two Weeks

Date (Daily)	New Cases	7-Day Moving Average
01OCT2020	26	28.43
02OCT2020	42	31.57
03OCT2020	27	31.00
04OCT2020	27	31.29
05OCT2020	34	31.43
06OCT2020	42	32.71
07OCT2020	39	33.86
08OCT2020	27	34.00
09OCT2020	42	34.00
10OCT2020	27	34.00
11OCT2020	15	32.29
12OCT2020	14	29.43

Note1: Event Date is calculated as follows based on completed information:

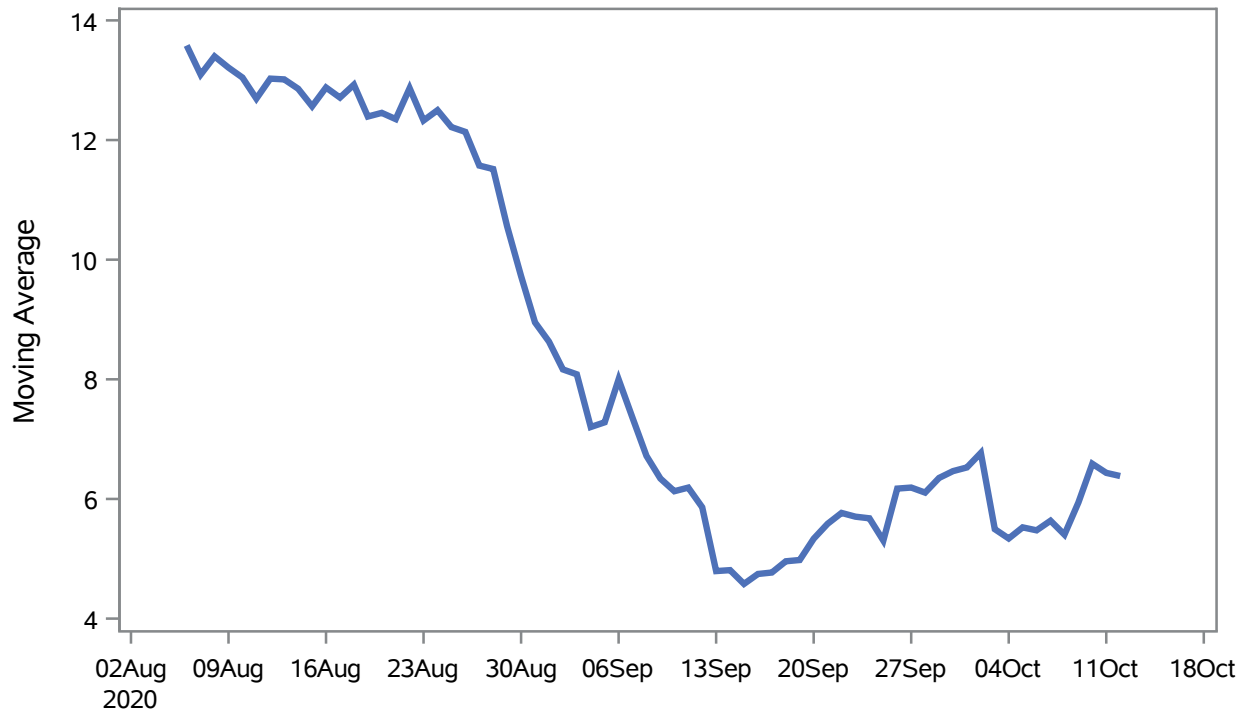
1) Disease onset date 2) Disease diagnosis date 3) Lab result collection date 4) Report date to SNHD.

Investigations are ongoing; data are subject to change.

Reporting through 14OCT2020

Henderson zip codes include 89002, 89011, 89012, 89014, 89015, 89044, 89052, 89074.

Percent of People Receiving COVID-19 Viral Tests Who Have Positive Results in Henderson



Investigations are ongoing; data are subject to change.

Reporting through 14OCT2020

Henderson zip codes include 89002, 89011, 89012, 89014, 89015, 89044, 89052, 89074.

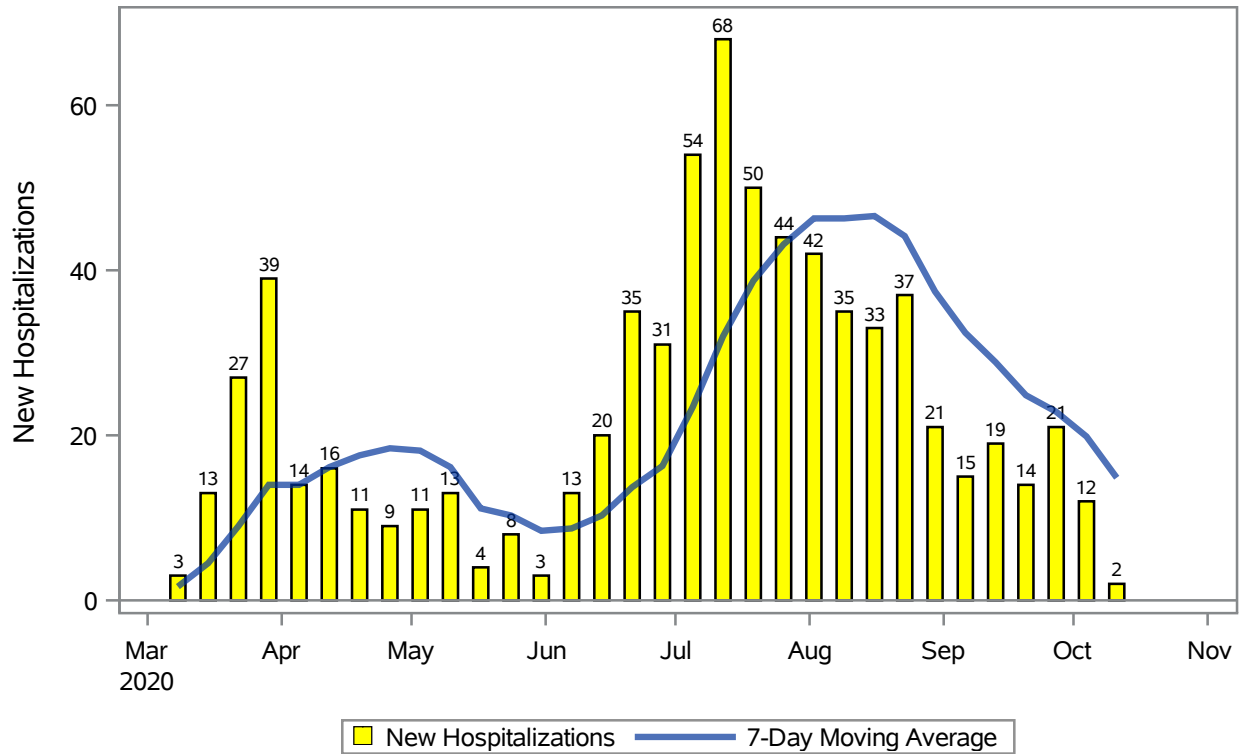
Table 2: Percent of People Receiving COVID-19 Viral Tests Who Have Positive Results in Henderson

Collection Date	Positive	Negative	Equivocal	Total	% Positivity	7-Day Moving Average
28SEP2020	23	481	0	504	4.56	6.11
29SEP2020	40	639	0	679	5.89	6.35
30SEP2020	33	595	0	628	5.25	6.47
01OCT2020	33	542	1	576	5.73	6.53
02OCT2020	44	765	0	809	5.44	6.77
03OCT2020	21	487	0	508	4.13	5.49
04OCT2020	14	206	0	220	6.36	5.34
05OCT2020	39	626	0	665	5.86	5.53
06OCT2020	51	869	0	920	5.54	5.48
07OCT2020	50	734	0	784	6.38	5.64
08OCT2020	44	1028	0	1072	4.10	5.40
09OCT2020	65	642	0	707	9.19	5.94
10OCT2020	43	453	0	496	8.67	6.59
11OCT2020	15	268	0	283	5.30	6.44
12OCT2020	19	327	0	346	5.49	6.38

Note: Testing Data includes a 3 day delay

**Investigations are ongoing; data are subject to change.
Reporting through 14OCT2020
Henderson zip codes include 89002, 89011, 89012, 89014, 89015, 89044, 89052, 89074.**

COVID19 Hospitalizations for Henderson, 7-Day Moving Average



Investigations are ongoing; data are subject to change.

Reporting through 14OCT2020

Henderson zip codes include 89002, 89011, 89012, 89014, 89015, 89044, 89052, 89074.

Table 3: New COVID19-Related Hospitalizations and 7-Day Moving Average in Henderson, previous month

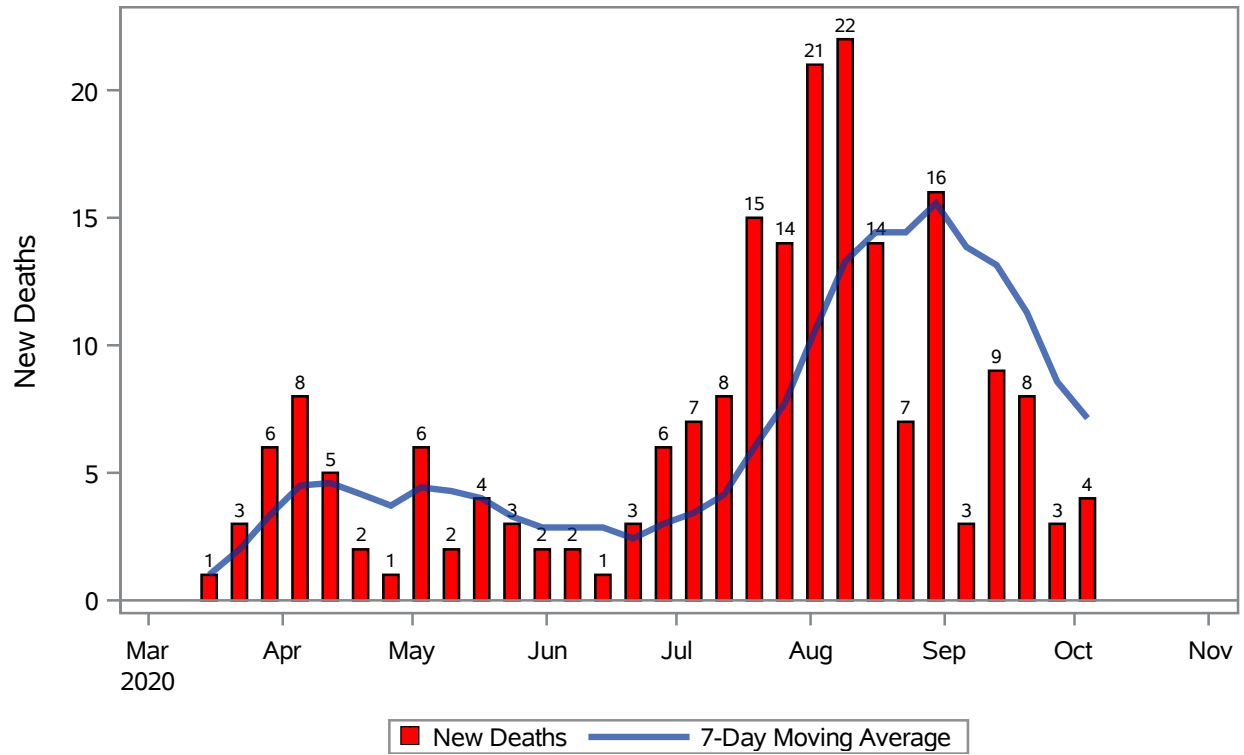
Week	Hospitalizations	7-Day Moving Average
20SEP2020	14	24.9
27SEP2020	21	22.9
04OCT2020	12	19.9
11OCT2020	2	14.9

Note1: Admission Date is calculated as follows based on completed information:
A) COVID19 Case is hospitalized B) COVID19 Case has a hospital admission date.

If admission date is missing, then the following is substituted temporarily, in order:
1) Disease onset date 2) Disease diagnosis date 3) Lab result collection date 4) Report date to SNHD.

**Investigations are ongoing; data are subject to change.
Reporting through 14OCT2020
Henderson zip codes include 89002, 89011, 89012, 89014, 89015, 89044, 89052, 89074.**

COVID19 Deaths for Henderson, 7-Day Moving Average



Investigations are ongoing; data are subject to change.

Reporting through 14OCT2020

Henderson zip codes include 89002, 89011, 89012, 89014, 89015, 89044, 89052, 89074.

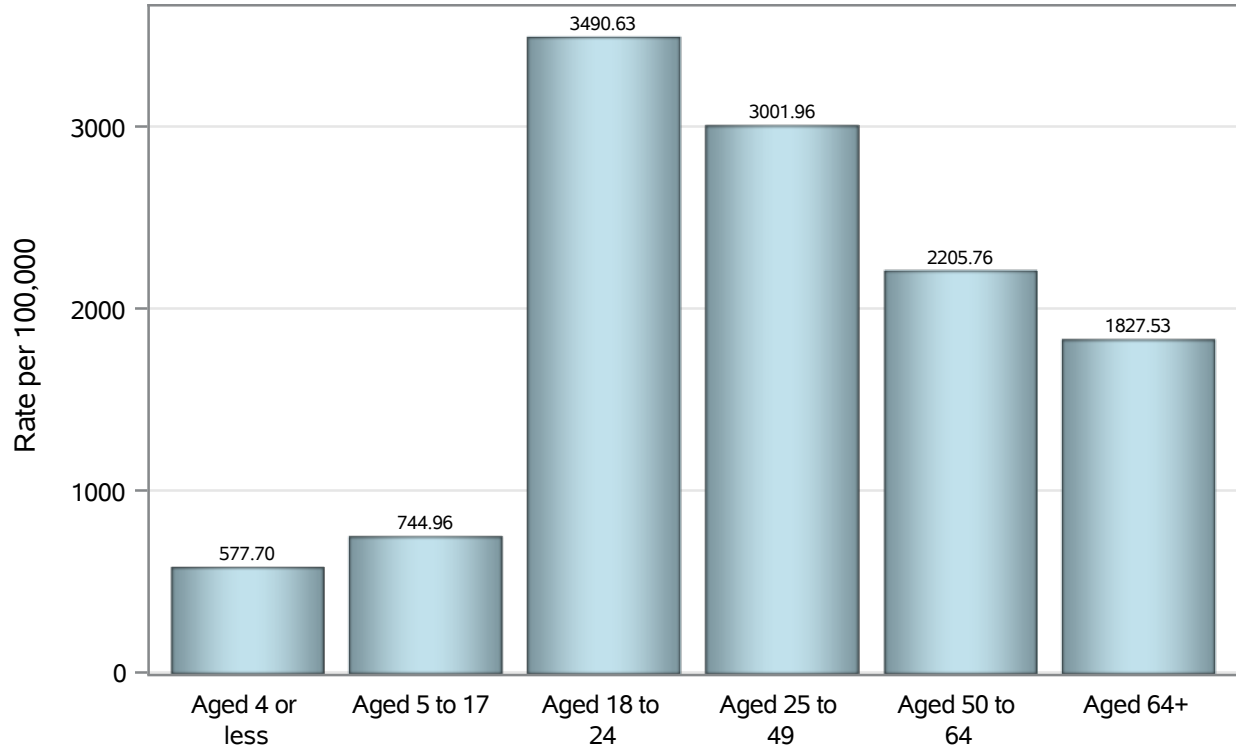
Table 4: New COVID19-Related Deaths and 7-Day Moving Average in Henderson, Previous Month

Week	Deaths	7-Day Moving Average
20SEP2020	8	11.3
27SEP2020	3	8.57
04OCT2020	4	7.14

Note1: Date of Death is calculated as follows based on completed information:
A) COVID19 Case is reported as deceased B) COVID19 Case has a reported date of death.

If date of death is missing, then the following is substituted temporarily, in order:
1) Disease onset date 2) Disease diagnosis date
3) Lab result collection date 4) Report date to SNHD.

Case Age Rates in Henderson

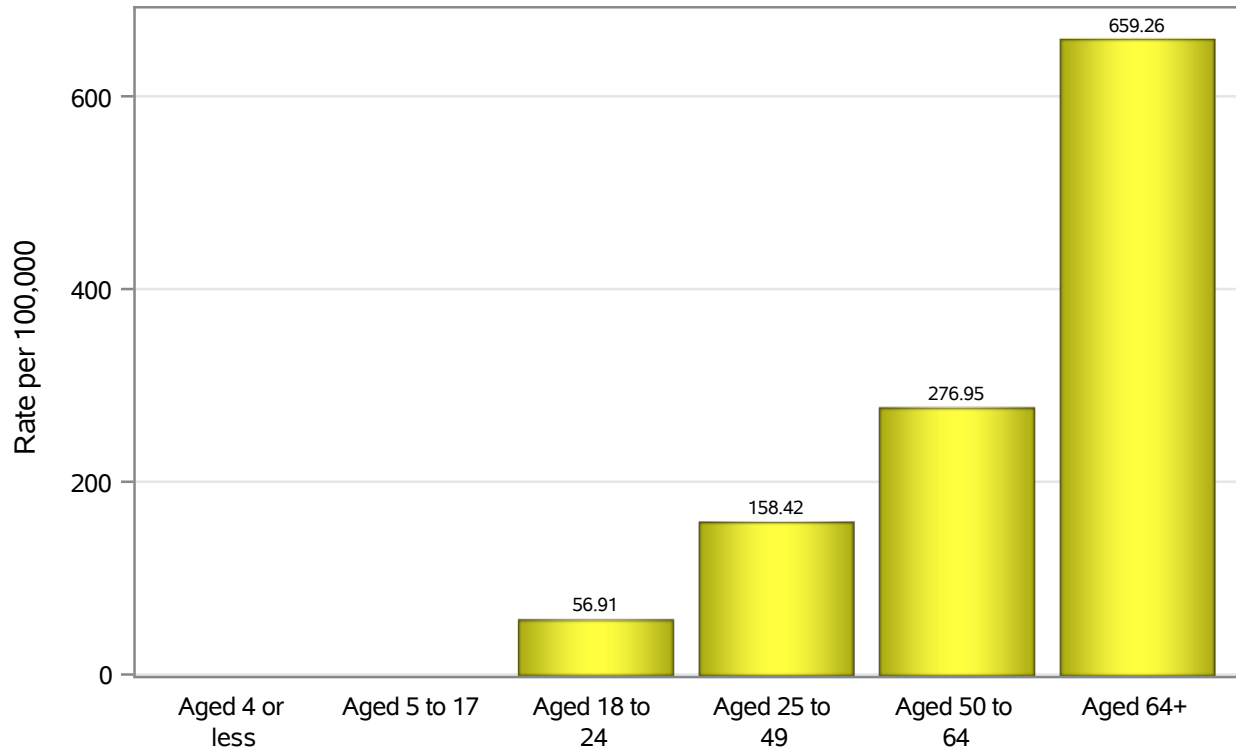


Investigations are ongoing; data are subject to change.

Reporting through 14OCT2020

Henderson zip codes include 89002, 89011, 89012, 89014, 89015, 89044, 89052, 89074.

Hospitalization Age Rates in Henderson

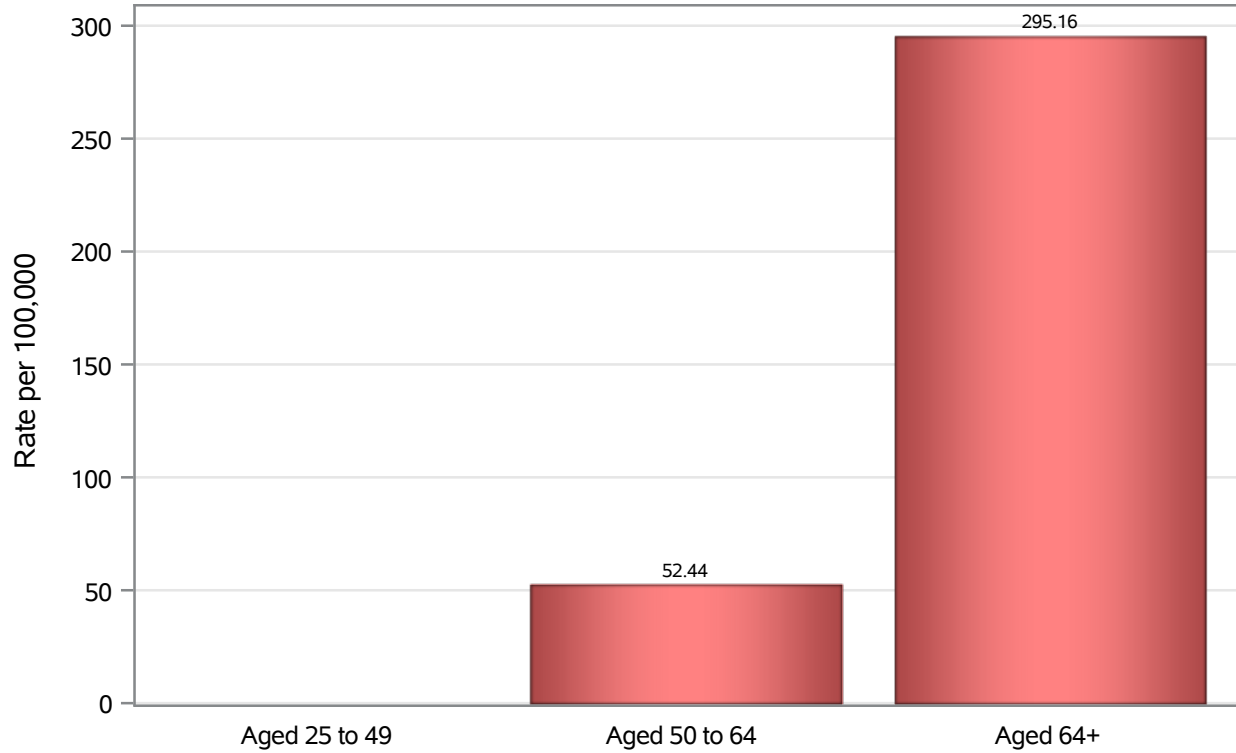


Investigations are ongoing; data are subject to change.

Reporting through 14OCT2020

Henderson zip codes include 89002, 89011, 89012, 89014, 89015, 89044, 89052, 89074.

Death Age Rates in Henderson



Investigations are ongoing; data are subject to change.

Reporting through 14OCT2020

Henderson zip codes include 89002, 89011, 89012, 89014, 89015, 89044, 89052, 89074.

Table 5: Age and COVID19 in Henderson

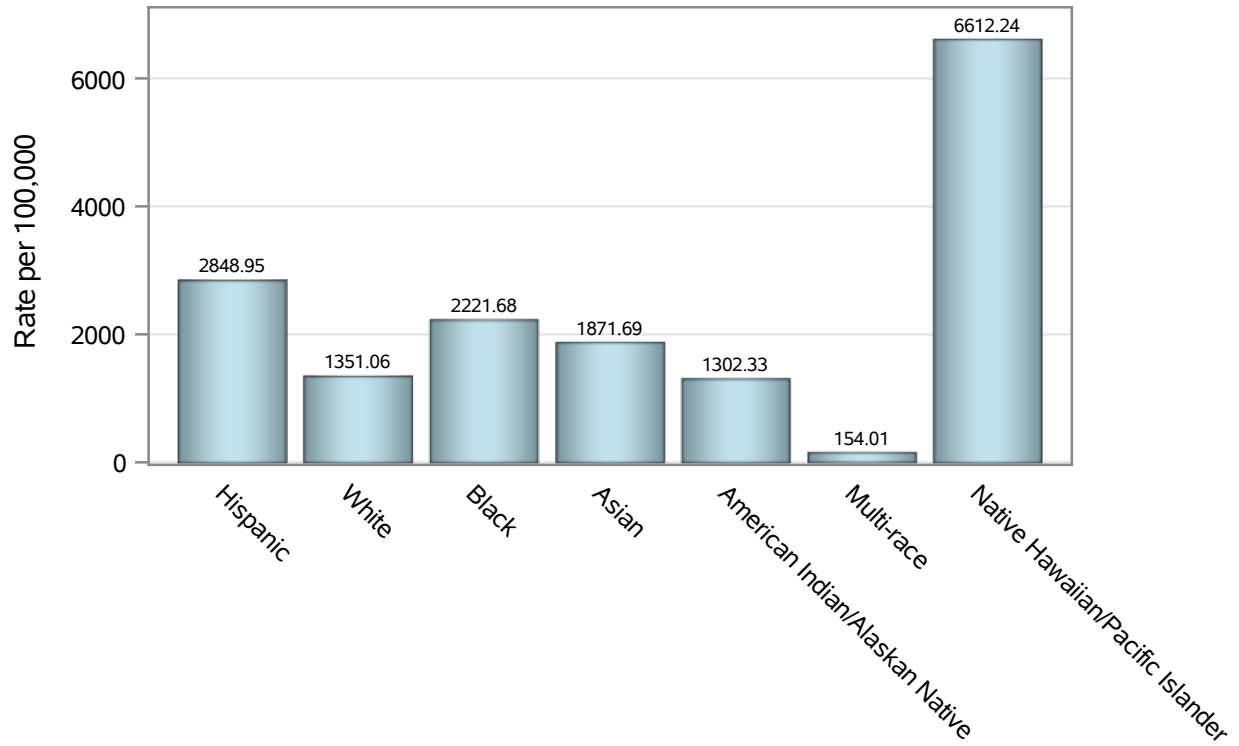
Case Status	Age Categories	N	%	Population	Rate per 100,000
Cases	Aged 4 or less	89	1.4	15,406	577.70
	Aged 5 to 17	364	5.5	48,862	744.96
	Aged 18 to 24	736	11.2	21,085	3490.6
	Aged 25 to 49	2994	45.6	99,735	3002.0
	Aged 50 to 64	1346	20.5	61,022	2205.8
	Aged 64+	1034	15.8	56,579	1827.5
Hospitalizations	Aged 4 or less	3	0.4	15,406	.
	Aged 5 to 17	4	0.6	48,862	.
	Aged 18 to 24	12	1.7	21,085	56.91
	Aged 25 to 49	158	22.0	99,735	158.42
	Aged 50 to 64	169	23.5	61,022	276.95
	Aged 64+	373	51.9	56,579	659.26
Deaths	Aged 25 to 49	5	2.5	99,735	.
	Aged 50 to 64	32	15.7	61,022	52.44
	Aged 64+	167	81.9	56,579	295.16

Note1: Population data source for calculating rate estimates: U.S. Census Bureau, ACS 5-year estimate.

Note2: Rates for categories with fewer than 12 cases are suppressed due to high relative standard error.

Note3: Hospitalizations are regardless of deceased status; Deaths are regardless of hospitalization status

Case Race/Ethnicity Rates in Henderson

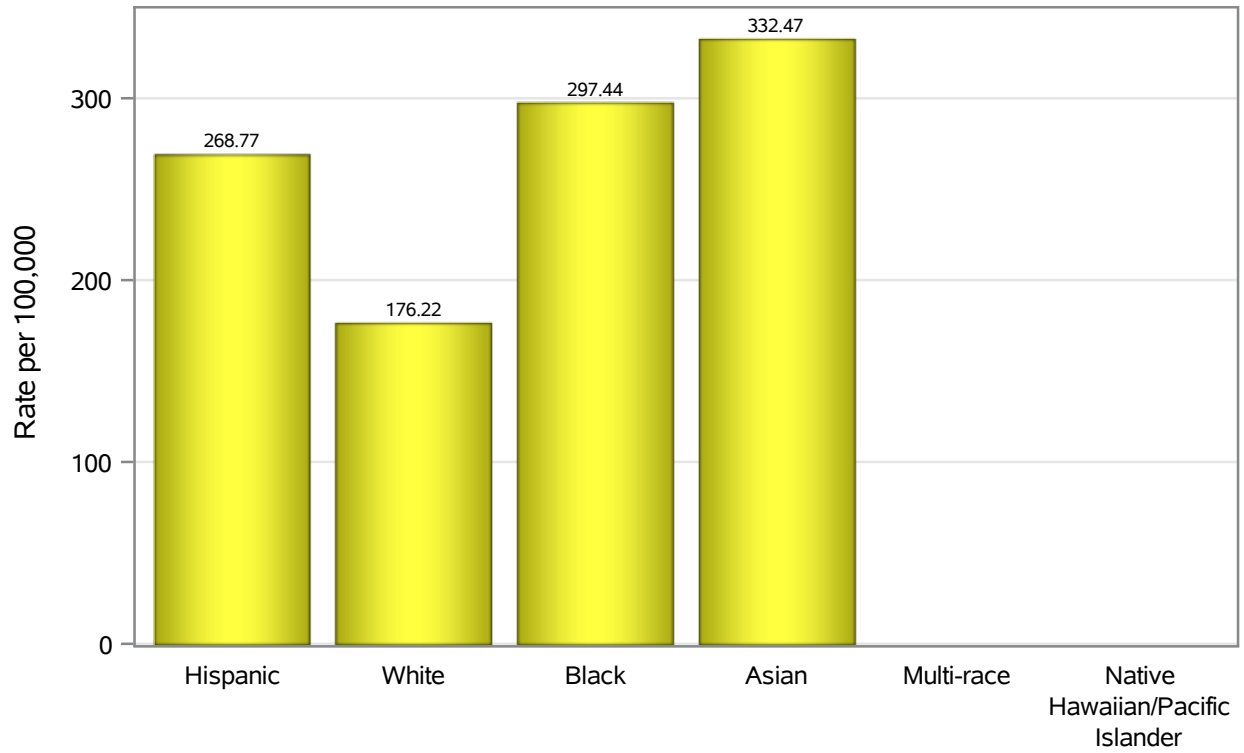


Investigations are ongoing; data are subject to change.

Reporting through 14OCT2020

Henderson zip codes include 89002, 89011, 89012, 89014, 89015, 89044, 89052, 89074.

Hospitalization Race/Ethnicity Rates in Henderson

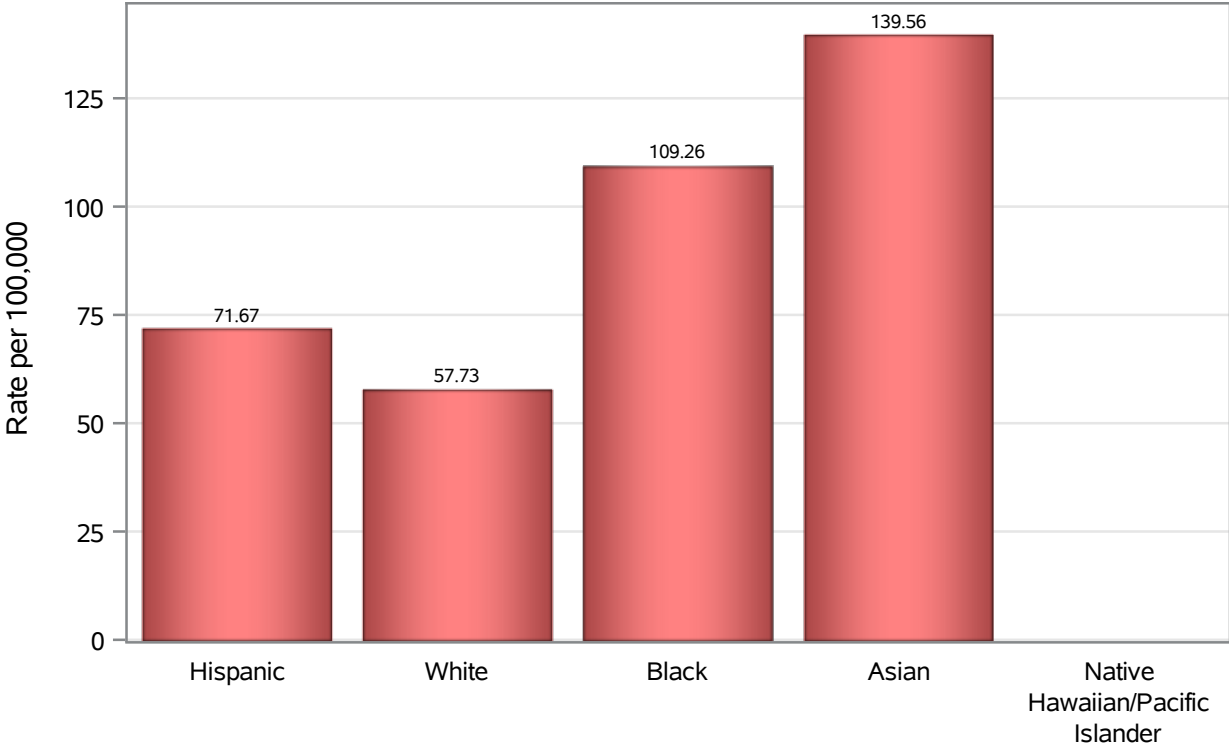


Investigations are ongoing; data are subject to change.

Reporting through 14OCT2020

Henderson zip codes include 89002, 89011, 89012, 89014, 89015, 89044, 89052, 89074.

Death Race/Ethnicity Rates in Henderson



Investigations are ongoing; data are subject to change.

Reporting through 14OCT2020

Henderson zip codes include 89002, 89011, 89012, 89014, 89015, 89044, 89052, 89074.

Table 6: Race/Ethnicity and COVID19 in Henderson

Case Status	Race Ethnicity Categories	N	%	Population	Rate per 100,000
Cases	Hispanic	1431	21.8	50,229	2849.0
	White	2668	40.7	197475	1351.1
	Black	366	5.6	16,474	2221.7
	Asian	456	6.9	24,363	1871.7
	American Indian/Alaskan Native	14	0.2	1,075	1302.3
	Multi-race	17	0.3	11,038	154.01
	Native Hawaiian/Pacific Islander	81	1.2	1,225	6612.2
	Unknown	1530	23.3	.	.
Hospitalizations	Hispanic	135	18.8	50,229	268.77
	White	348	48.4	197475	176.22
	Black	49	6.8	16,474	297.44
	Asian	81	11.3	24,363	332.47
	Multi-race	4	0.6	11,038	.
	Native Hawaiian/Pacific Islander	10	1.4	1,225	.
	Unknown	92	12.8	.	.
	Deaths	Hispanic	36	17.6	50,229
White		114	55.9	197475	57.73
Black		18	8.8	16,474	109.26
Asian		34	16.7	24,363	139.56
Native Hawaiian/Pacific Islander		1	0.5	1,225	.
Unknown		1	0.5	.	.

Note1: Population data source for calculating rate estimates: U.S. Census Bureau, ACS 5-year estimate.

Note2: Rates for categories with fewer than 12 cases are suppressed due to high relative standard error.

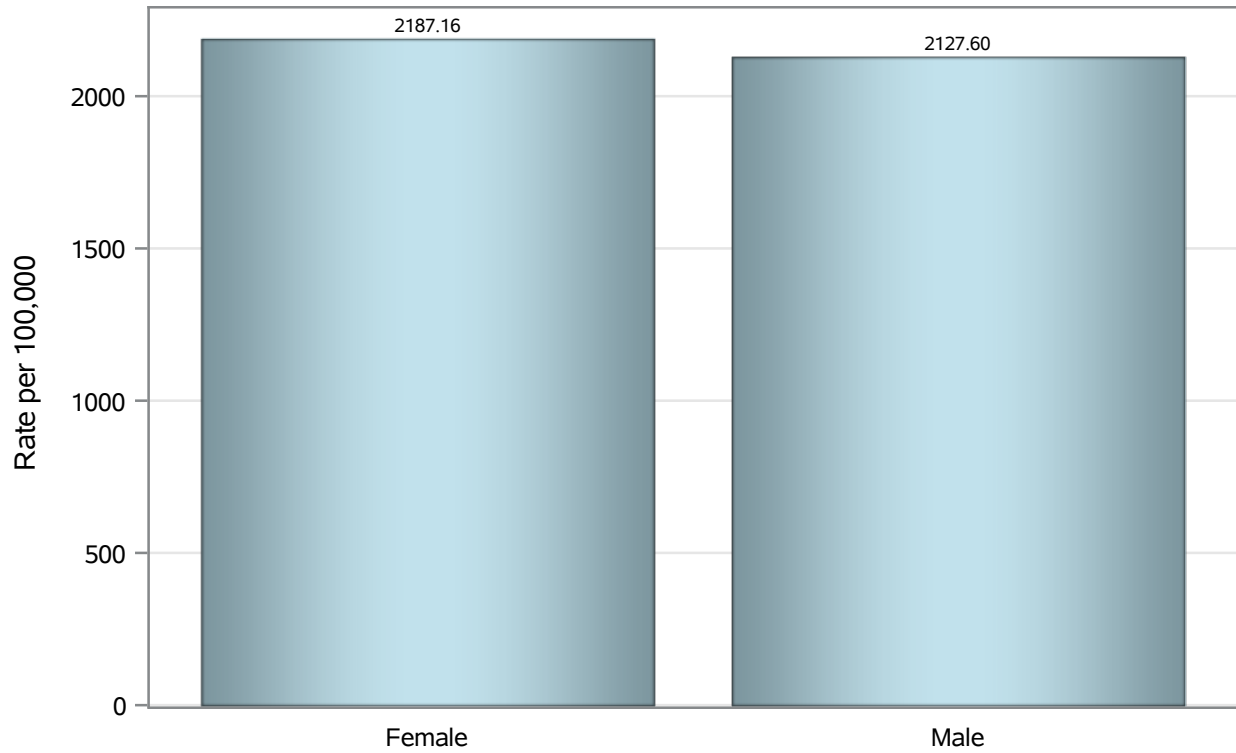
Note3: Hospitalizations are regardless of deceased status; Deaths are regardless of hospitalization status

Investigations are ongoing; data are subject to change.

Reporting through 14OCT2020

Henderson zip codes include 89002, 89011, 89012, 89014, 89015, 89044, 89052, 89074.

Case Birth Sex Rates in Henderson

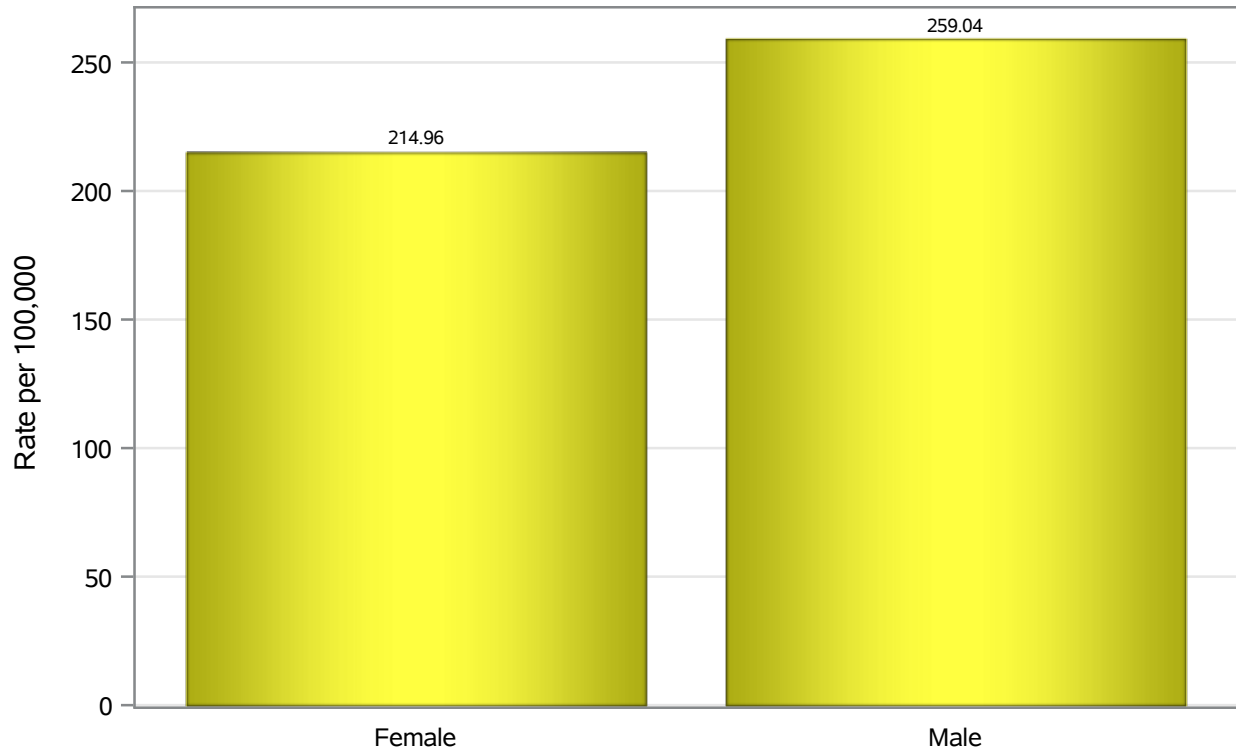


Investigations are ongoing; data are subject to change.

Reporting through 14OCT2020

Henderson zip codes include 89002, 89011, 89012, 89014, 89015, 89044, 89052, 89074.

Hospitalization Birth Sex Rates in Henderson

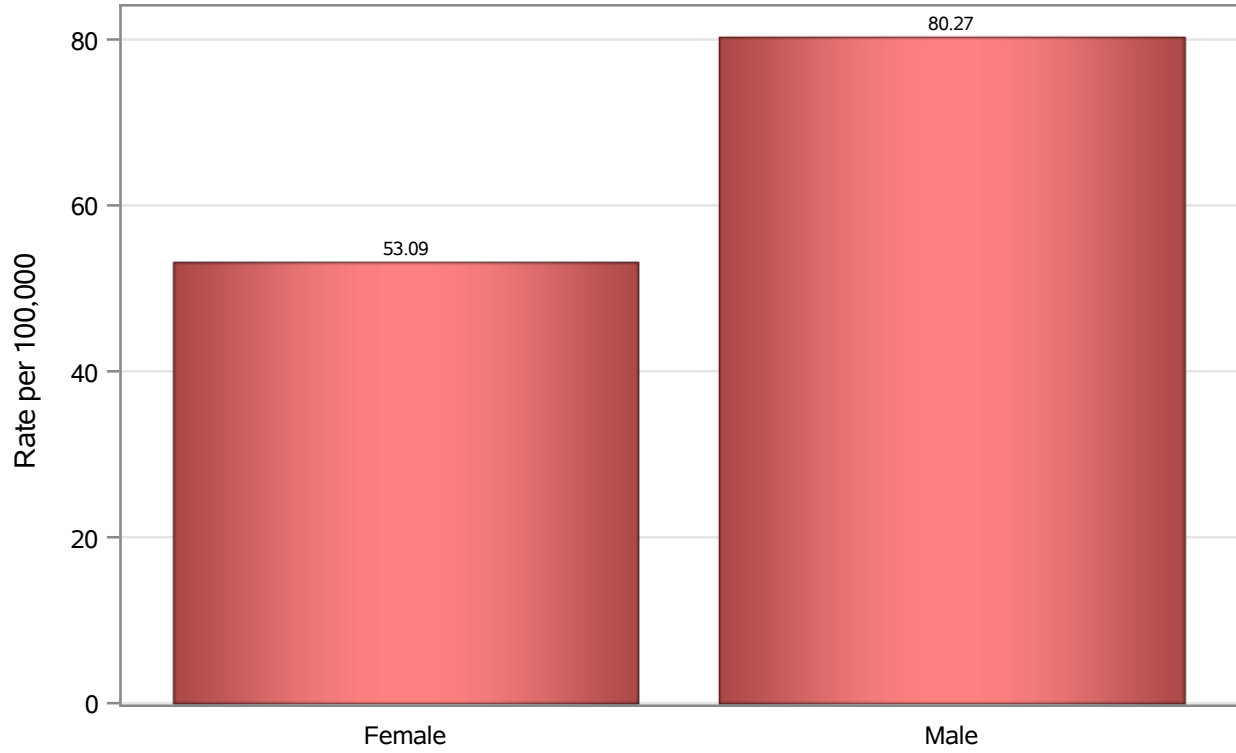


Investigations are ongoing; data are subject to change.

Reporting through 14OCT2020

Henderson zip codes include 89002, 89011, 89012, 89014, 89015, 89044, 89052, 89074.

Death Birth Sex Rates in Henderson



Investigations are ongoing; data are subject to change.

Reporting through 14OCT2020

Henderson zip codes include 89002, 89011, 89012, 89014, 89015, 89044, 89052, 89074.

Table 7: Birth Sex and COVID19 in Henderson

Case Status	Birth Sex Categories	N	%	Population	Rate per 100,000
Cases	Female	3378	51.5	154447	2187.2
	Male	3154	48.1	148242	2127.6
	Unknown	31	0.5	.	.
Hospitalizations	Female	332	46.2	154447	214.96
	Male	384	53.4	148242	259.04
	Unknown	3	0.4	.	.
Deaths	Female	82	40.2	154447	53.09
	Male	119	58.3	148242	80.27
	Unknown	3	1.5	.	.

Note1: Population data source for calculating rate estimates: U.S. Census Bureau, ACS 5-year estimate.

Note2: Rates for categories with fewer than 12 cases are suppressed due to high relative standard error.

Note3: Hospitalizations are regardless of deceased status; Deaths are regardless of hospitalization status

Investigations are ongoing; data are subject to change.

Reporting through 14OCT2020

Henderson zip codes include 89002, 89011, 89012, 89014, 89015, 89044, 89052, 89074.