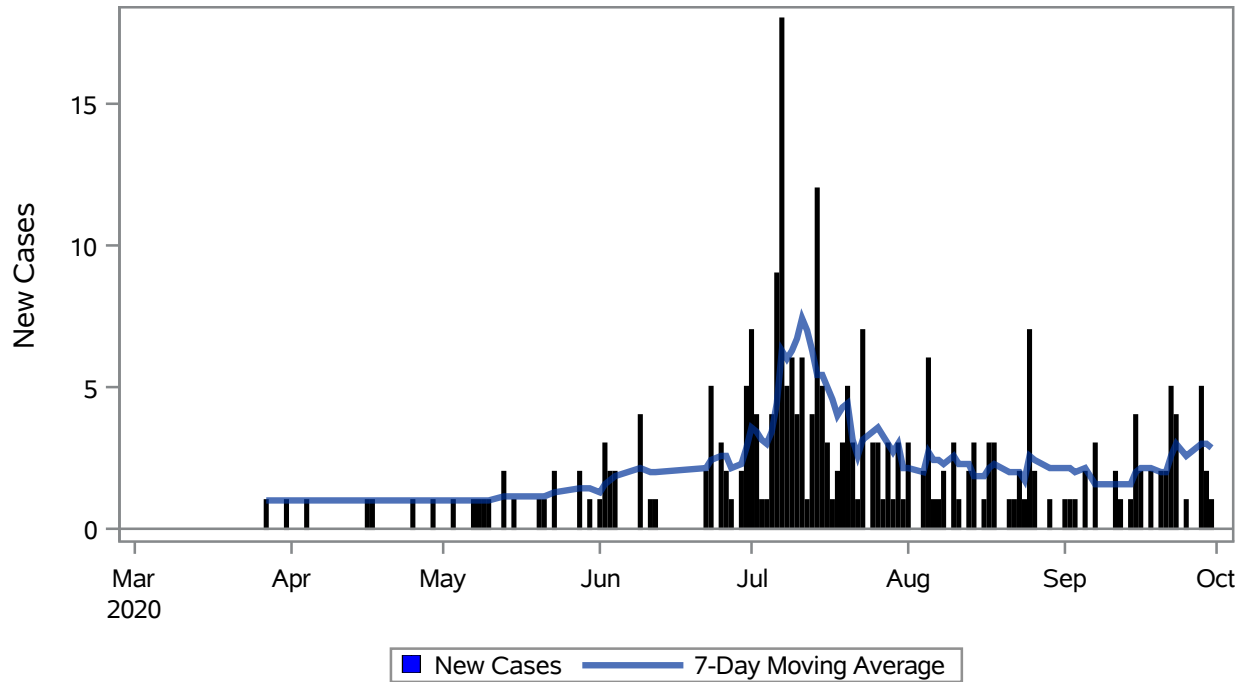


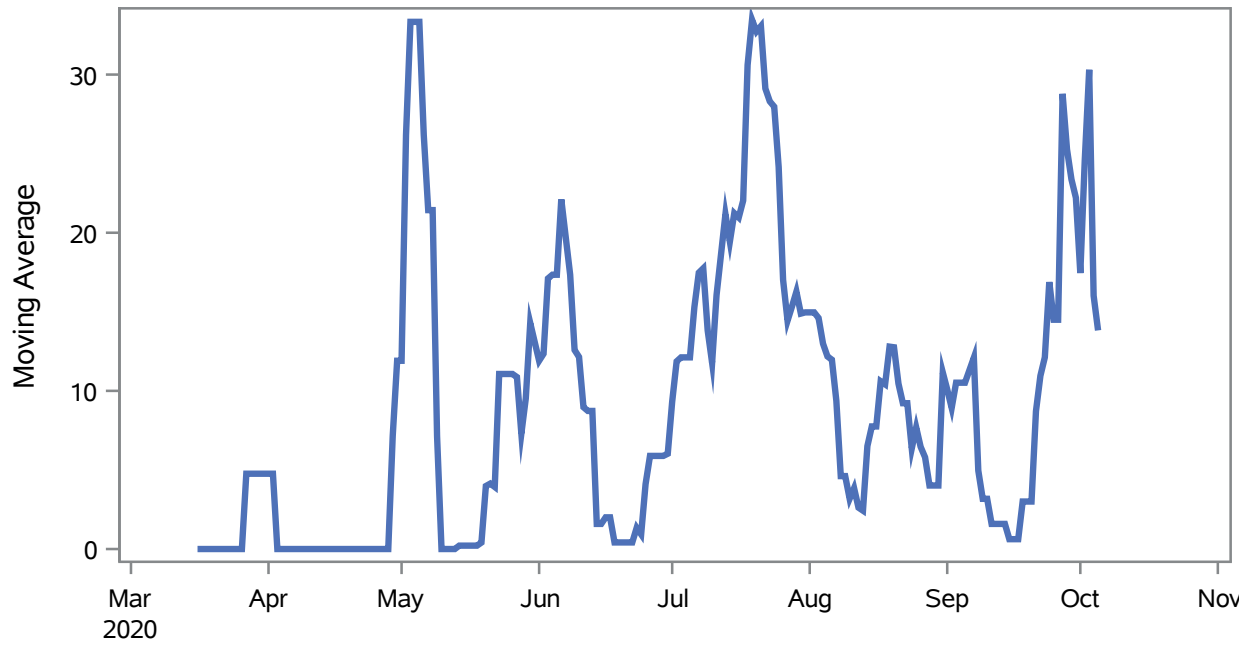
COVID19 Cases for Mesquite, 7-Day Moving Average



Investigations are ongoing; data are subject to change.
Reporting through 07OCT2020

Mesquite zip codes include 89027. The U.S. Census Bureau data uses Zip Code Tabulation Area (ZCTA), which does not list 89034 but has incorporated areas of 89034 within 89027 through the American Community Survey (ACS) 5-Year Estimates.

Percent of People Receiving COVID-19 Viral Tests Who Have Positive Results in Mesquite



Investigations are ongoing; data are subject to change.
Reporting through 07OCT2020

Mesquite zip codes include 89027. The U.S. Census Bureau data uses Zip Code Tabulation Area (ZCTA), which does not list 89034 but has incorporated areas of 89034 within 89027 through the American Community Survey (ACS) 5-Year Estimates.

Table 1: Age and COVID19 in Mesquite

Case Status	Age Categories	N	%	Population	Rate per 100,000
Cases	Aged 4 or less	2	0.8	702	--
	Aged 5 to 17	9	3.4	2,217	--
	Aged 18 to 24	29	10.9	938	3091.7
	Aged 25 to 49	91	34.2	3,386	2687.5
	Aged 50 to 64	66	24.8	3,371	1957.9
	Aged 64+	69	25.9	7,290	946.50
Hospitalizations	Aged 25 to 49	4	15.4	3,386	--
	Aged 50 to 64	8	30.8	3,371	--
	Aged 64+	14	53.8	7,290	192.04
Deaths	Aged 64+	3	100	7,290	--

Note1: Population data source for calculating rate estimates: U.S. Census Bureau, ACS 5-year estimate.

Note2: Rates for categories with fewer than 12 cases are suppressed due to high relative standard error.

Note3: Hospitalizations are regardless of deceased status; Deaths are regardless of hospitalization status

Investigations are ongoing; data are subject to change.

Reporting through 07OCT2020

Mesquite zip codes include 89027. The U.S. Census Bureau data uses Zip Code Tabulation Area (ZCTA), which does not list 89034 but has incorporated areas of 89034 within 89027 through the American Community Survey (ACS) 5-Year Estimates.

Table 2: Race/Ethnicity and COVID19 in Mesquite

Case Status	Race Ethnicity Categories	N	%	Population	Rate per 100,000
Cases	Hispanic	138	51.9	3,738	3691.8
	White	100	37.6	13,120	762.20
	American Indian/Alaskan Native	--	0.4	95	--
	Native Hawaiian/Pacific Islander	--	1.1	30	--
	Unknown	24	9.0	.	.
Hospitalizations	Hispanic	13	50.0	3,738	347.78
	White	11	42.3	13,120	--
	Native Hawaiian/Pacific Islander	--	3.8	30	--
	Unknown	1	3.8	.	.
Deaths	White	3	100	13,120	--

Note1: Population data source for calculating rate estimates: U.S. Census Bureau, ACS 5-year estimate.

Note2: Rates for categories with fewer than 12 cases are suppressed due to high relative standard error. Counts for categories with population less than 500 are suppressed for confidentiality.

Note3: Due to suppression, the total counts per case status may not equal expected totals.

Note4: Hospitalizations are regardless of deceased status; Deaths are regardless of hospitalization status

**Investigations are ongoing; data are subject to change.
Reporting through 07OCT2020**

Mesquite zip codes include 89027. The U.S. Census Bureau data uses Zip Code Tabulation Area (ZCTA), which does not list 89034 but has incorporated areas of 89034 within 89027 through the American Community Survey (ACS) 5-Year Estimates.

Table 3: Birth Sex and COVID19 in Mesquite

Case Status	Birth Sex Categories	N	%	Population	Rate per 100,000
Cases	Female	160	60.2	9,111	1756.1
	Male	104	39.1	8,793	1182.8
	Unknown	2	0.8	.	.
Hospitalizations	Female	16	61.5	9,111	175.61
	Male	10	38.5	8,793	--
Deaths	Male	3	100	8,793	--

Note1: Population data source for calculating rate estimates: U.S. Census Bureau, ACS 5-year estimate.

Note2: Rates for categories with fewer than 12 cases are suppressed due to high relative standard error. Counts for categories with population less than 500 are suppressed for confidentiality.

Note3: Hospitalizations are regardless of deceased status; Deaths are regardless of hospitalization status

**Investigations are ongoing; data are subject to change.
Reporting through 07OCT2020**

Mesquite zip codes include 89027. The U.S. Census Bureau data uses Zip Code Tabulation Area (ZCTA), which does not list 89034 but has incorporated areas of 89034 within 89027 through the American Community Survey (ACS) 5-Year Estimates.