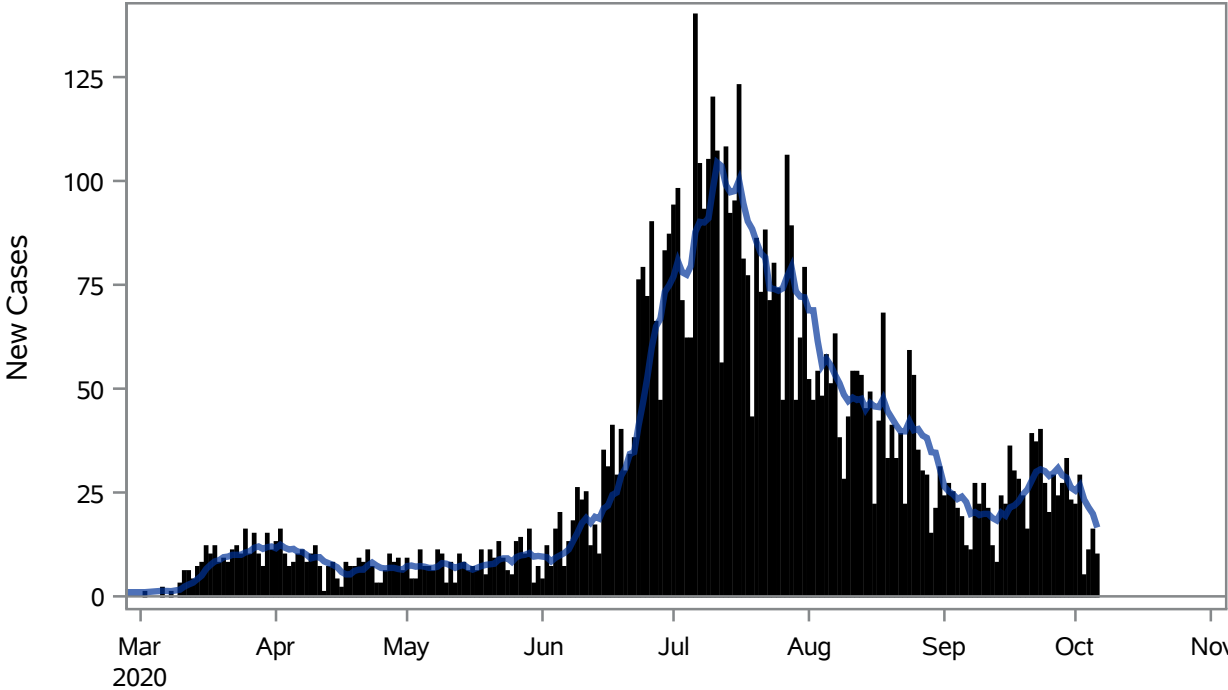


### COVID19 Cases for Henderson, 7-Day Moving Average



■ New Cases    — 7-Day Moving Average

Investigations are ongoing; data are subject to change.  
Reporting through 07OCT2020

Henderson zip codes include 89002, 89011, 89012, 89014, 89015, 89044, 89052, 89074.

**Table 1: New COVID19 Cases and 7-Day Moving Average in Henderson, Previous Two Weeks**

Date (Daily)	New Cases	7-Day Moving Average
24SEP2020	27	30.14
25SEP2020	20	29.00
26SEP2020	29	29.71
27SEP2020	24	30.86
28SEP2020	27	29.14
29SEP2020	33	28.57
30SEP2020	23	26.14
01OCT2020	22	25.43
02OCT2020	29	26.71
03OCT2020	5	23.29
04OCT2020	11	21.43
05OCT2020	16	19.86

---

Note1: Event Date is calculated as follows based on completed information:

1) Disease onset date 2) Disease diagnosis date 3) Lab result collection date 4) Report date to SNHD.

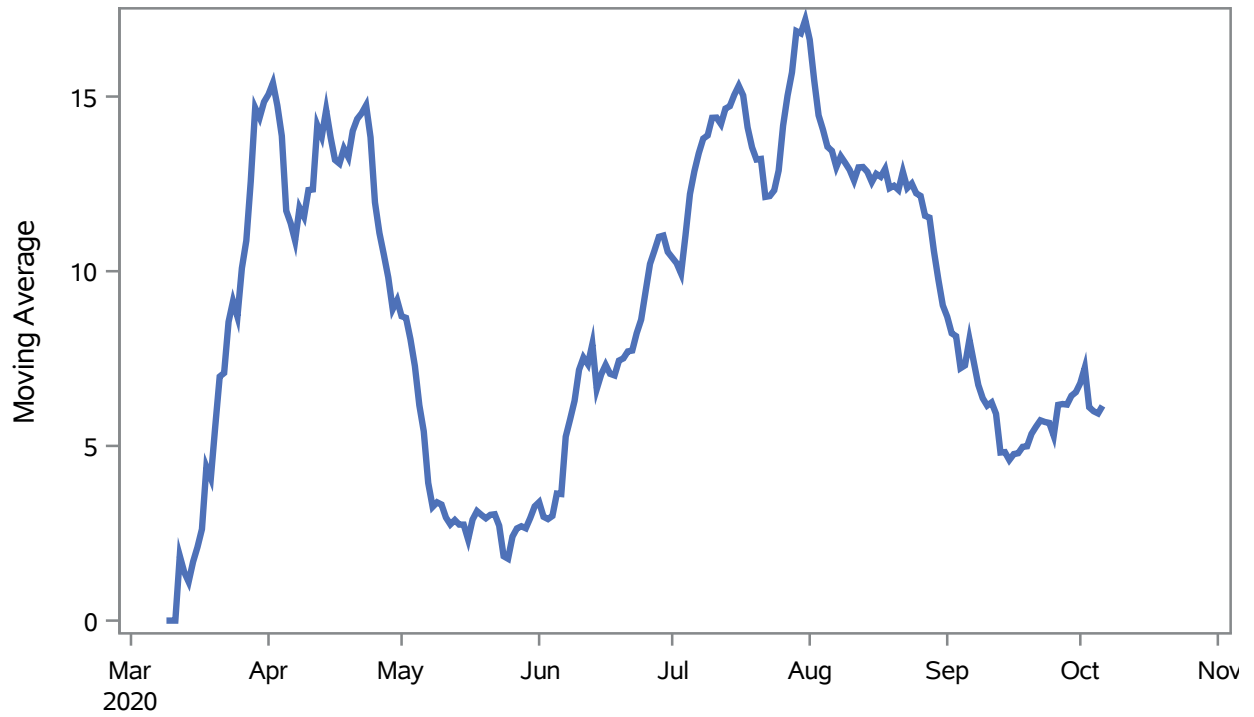
---

**Investigations are ongoing; data are subject to change.**

**Reporting through 07OCT2020**

**Henderson zip codes include 89002, 89011, 89012, 89014, 89015, 89044, 89052, 89074.**

### Percent of People Receiving COVID-19 Viral Tests Who Have Positive Results in Henderson



Investigations are ongoing; data are subject to change.

Reporting through 07OCT2020

Henderson zip codes include 89002, 89011, 89012, 89014, 89015, 89044, 89052, 89074.

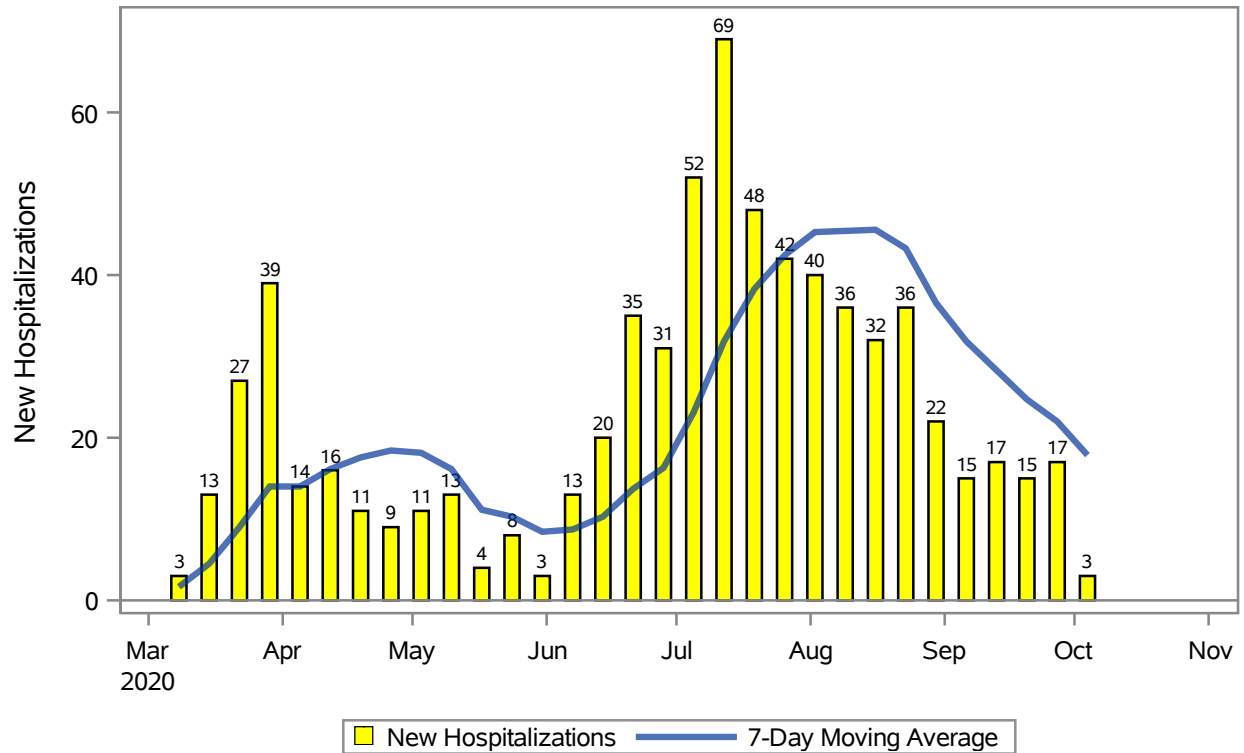
**Table 2: Percent of People Receiving COVID-19 Viral Tests Who Have Positive Results in Henderson**

Collection Date	Positive	Negative	Equivocal	Total	% Positivity	7-Day Moving Average
21SEP2020	23	451	0	474	4.85	5.55
22SEP2020	33	753	0	786	4.20	5.73
23SEP2020	27	562	0	589	4.58	5.69
24SEP2020	25	445	0	470	5.32	5.66
25SEP2020	25	636	1	662	3.78	5.29
26SEP2020	35	231	0	266	13.16	6.17
27SEP2020	12	148	0	160	7.50	6.20
28SEP2020	23	462	0	485	4.74	6.18
29SEP2020	40	630	0	670	5.97	6.44
30SEP2020	33	589	0	622	5.31	6.54
01OCT2020	33	429	0	462	7.14	6.80
02OCT2020	43	585	0	628	6.85	7.24
03OCT2020	20	362	0	382	5.24	6.11
04OCT2020	11	153	0	164	6.71	5.99
05OCT2020	8	178	0	186	4.30	5.93

Note: Testing Data includes a 3 day delay

**Investigations are ongoing; data are subject to change.  
Reporting through 07OCT2020  
Henderson zip codes include 89002, 89011, 89012, 89014, 89015, 89044, 89052, 89074.**

### COVID19 Hospitalizations for Henderson, 7-Day Moving Average



Investigations are ongoing; data are subject to change.  
Reporting through 07OCT2020

Henderson zip codes include 89002, 89011, 89012, 89014, 89015, 89044, 89052, 89074.

**Table 3: New COVID19-Related Hospitalizations and 7-Day Moving Average in Henderson, previous month**

Week	Hospitalizations	7-Day Moving Average
13SEP2020	17	28.3
20SEP2020	15	24.7
27SEP2020	17	22.0
04OCT2020	3	17.9

---

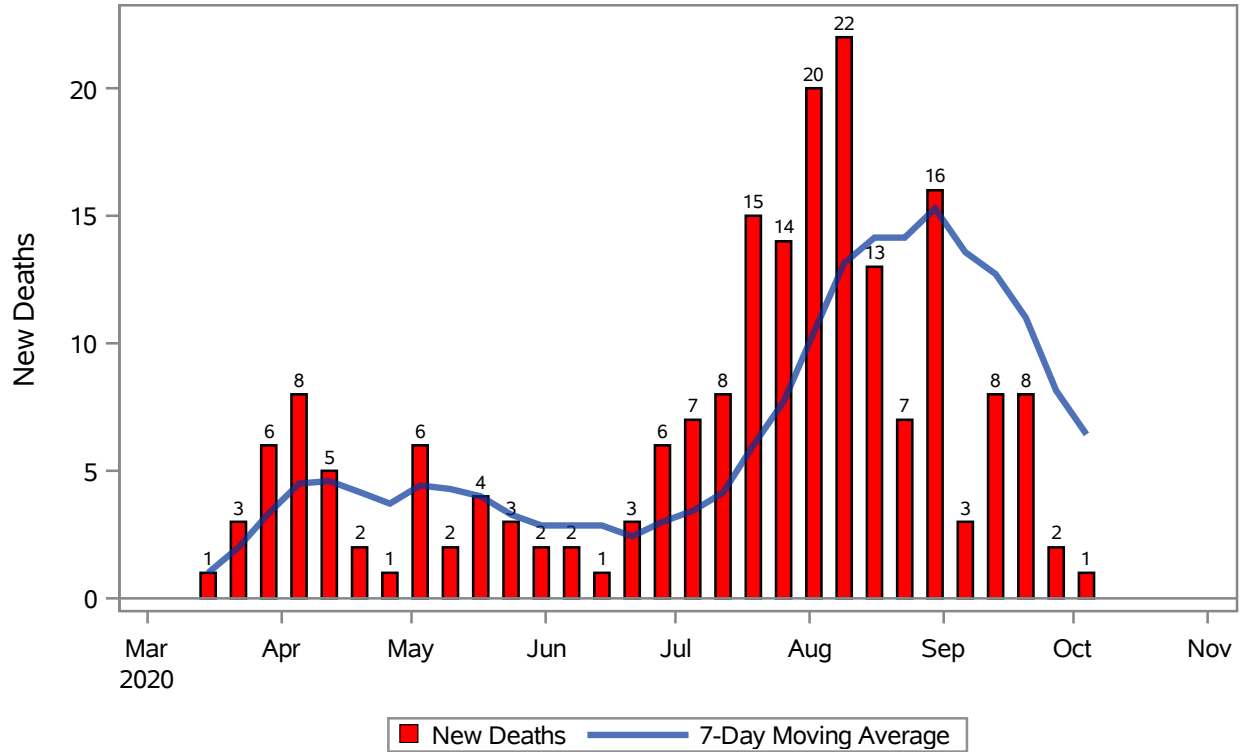
Note1: Admission Date is calculated as follows based on completed information:  
A) COVID19 Case is hospitalized B) COVID19 Case has a hospital admission date.

If admission date is missing, then the following is substituted temporarily, in order:  
1) Disease onset date 2) Disease diagnosis date 3) Lab result collection date 4) Report date to SNHD.

---

**Investigations are ongoing; data are subject to change.  
Reporting through 07OCT2020  
Henderson zip codes include 89002, 89011, 89012, 89014, 89015, 89044, 89052, 89074.**

### COVID19 Deaths for Henderson, 7-Day Moving Average



Investigations are ongoing; data are subject to change.

Reporting through 07OCT2020

Henderson zip codes include 89002, 89011, 89012, 89014, 89015, 89044, 89052, 89074.

**Table 4: New COVID19-Related Deaths and 7-Day Moving Average in Henderson, Previous Month**

Week	Deaths	7-Day Moving Average
13SEP2020	8	12.7
20SEP2020	8	11.0
27SEP2020	2	8.14
04OCT2020	1	6.43

---

Note1: Date of Death is calculated as follows based on completed information:  
A) COVID19 Case is reported as deceased B) COVID19 Case has a reported date of death.

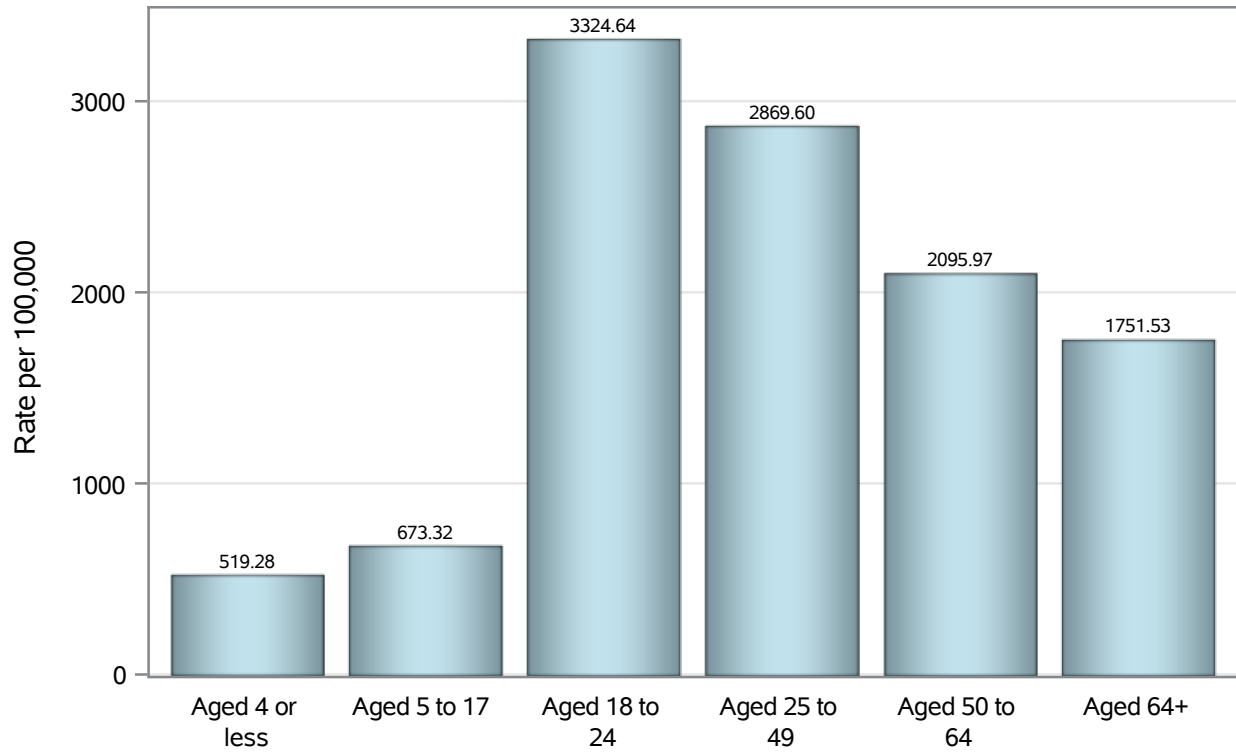
If date of death is missing, then the following is substituted temporarily, in order:  
1) Disease onset date 2) Disease diagnosis date  
3) Lab result collection date 4) Report date to SNHD.

---

**Investigations are ongoing; data are subject to change.  
Reporting through 07OCT2020  
Henderson zip codes include 89002, 89011, 89012, 89014, 89015, 89044, 89052, 89074.**



### Case Age Rates in Henderson

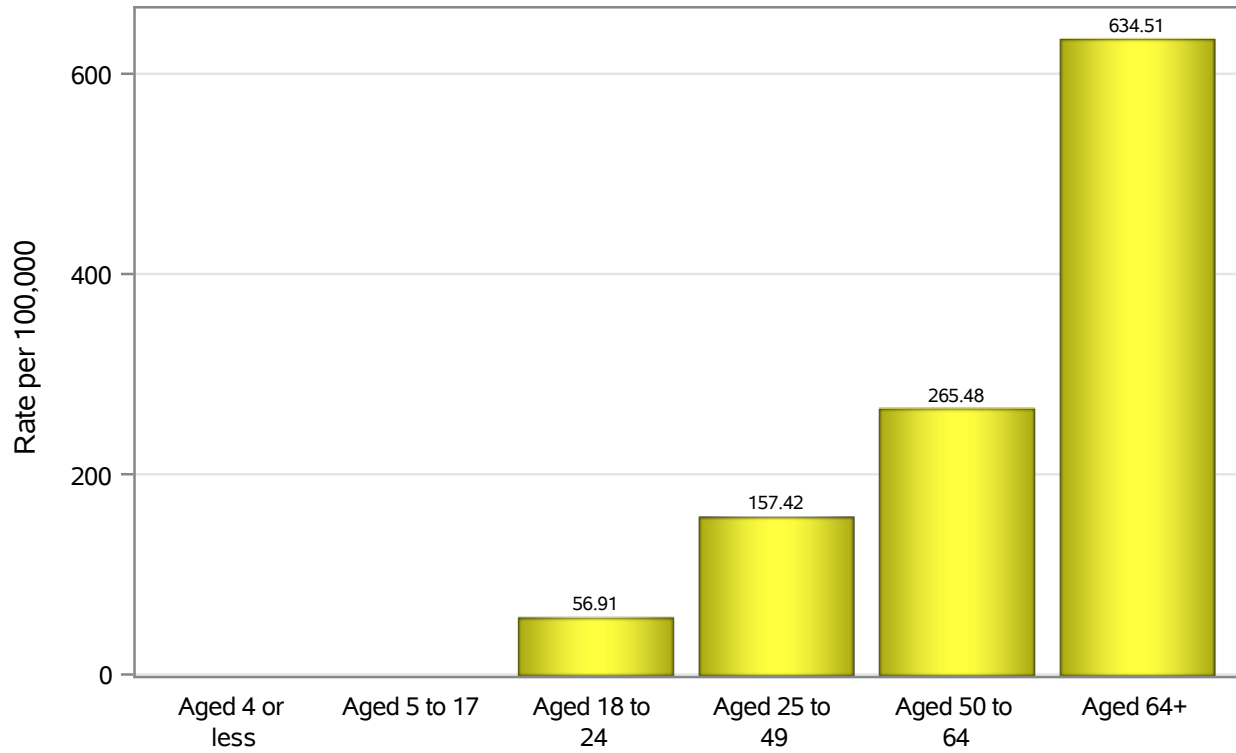


Investigations are ongoing; data are subject to change.

Reporting through 07OCT2020

Henderson zip codes include 89002, 89011, 89012, 89014, 89015, 89044, 89052, 89074.

### Hospitalization Age Rates in Henderson

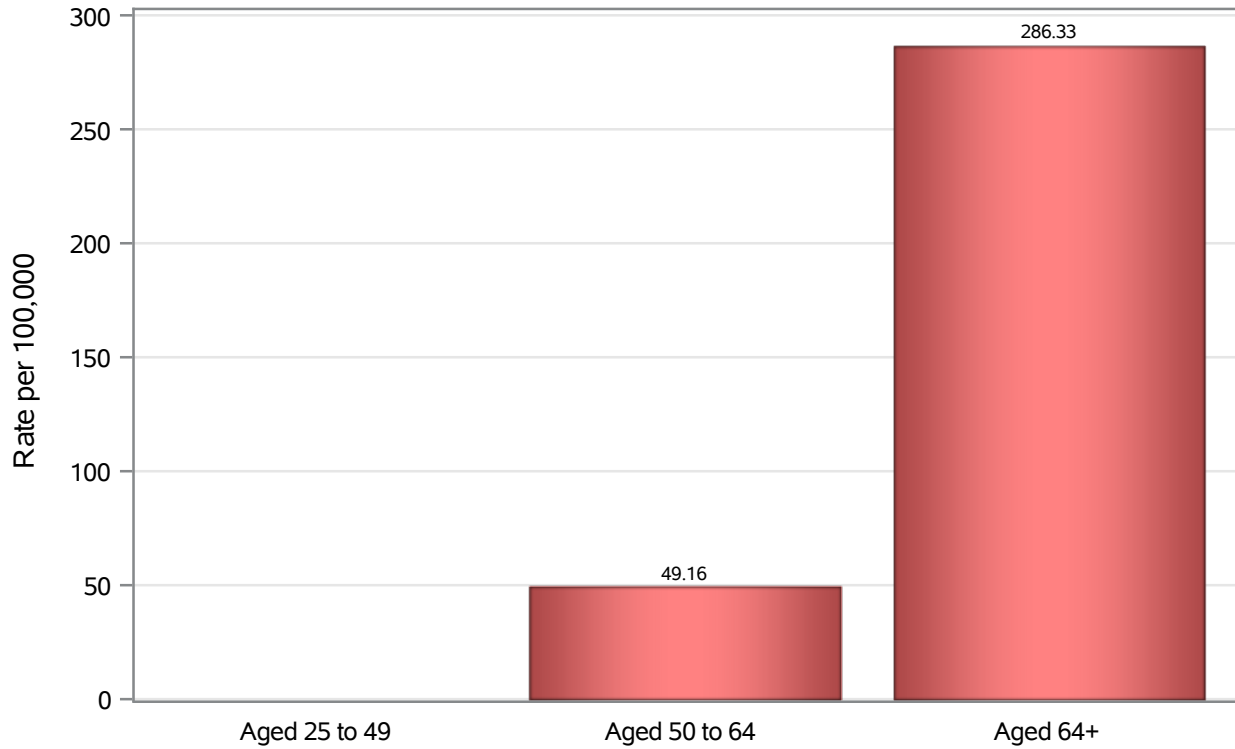


Investigations are ongoing; data are subject to change.

Reporting through 07OCT2020

Henderson zip codes include 89002, 89011, 89012, 89014, 89015, 89044, 89052, 89074.

### Death Age Rates in Henderson



Investigations are ongoing; data are subject to change.

Reporting through 07OCT2020

Henderson zip codes include 89002, 89011, 89012, 89014, 89015, 89044, 89052, 89074.

**Table 5: Age and COVID19 in Henderson**

Case Status	Age Categories	N	%	Population	Rate per 100,000
Cases	Aged 4 or less	80	1.3	15,406	519.28
	Aged 5 to 17	329	5.3	48,862	673.32
	Aged 18 to 24	701	11.2	21,085	3324.6
	Aged 25 to 49	2862	45.9	99,735	2869.6
	Aged 50 to 64	1279	20.5	61,022	2096.0
	Aged 64+	991	15.9	56,579	1751.5
Hospitalizations	Aged 4 or less	3	0.4	15,406	.
	Aged 5 to 17	4	0.6	48,862	.
	Aged 18 to 24	12	1.7	21,085	56.91
	Aged 25 to 49	157	22.5	99,735	157.42
	Aged 50 to 64	162	23.2	61,022	265.48
	Aged 64+	359	51.5	56,579	634.51
Deaths	Aged 25 to 49	5	2.5	99,735	.
	Aged 50 to 64	30	15.2	61,022	49.16
	Aged 64+	162	82.2	56,579	286.33

Note1: Population data source for calculating rate estimates: U.S. Census Bureau, ACS 5-year estimate.

Note2: Rates for categories with fewer than 12 cases are suppressed due to high relative standard error.

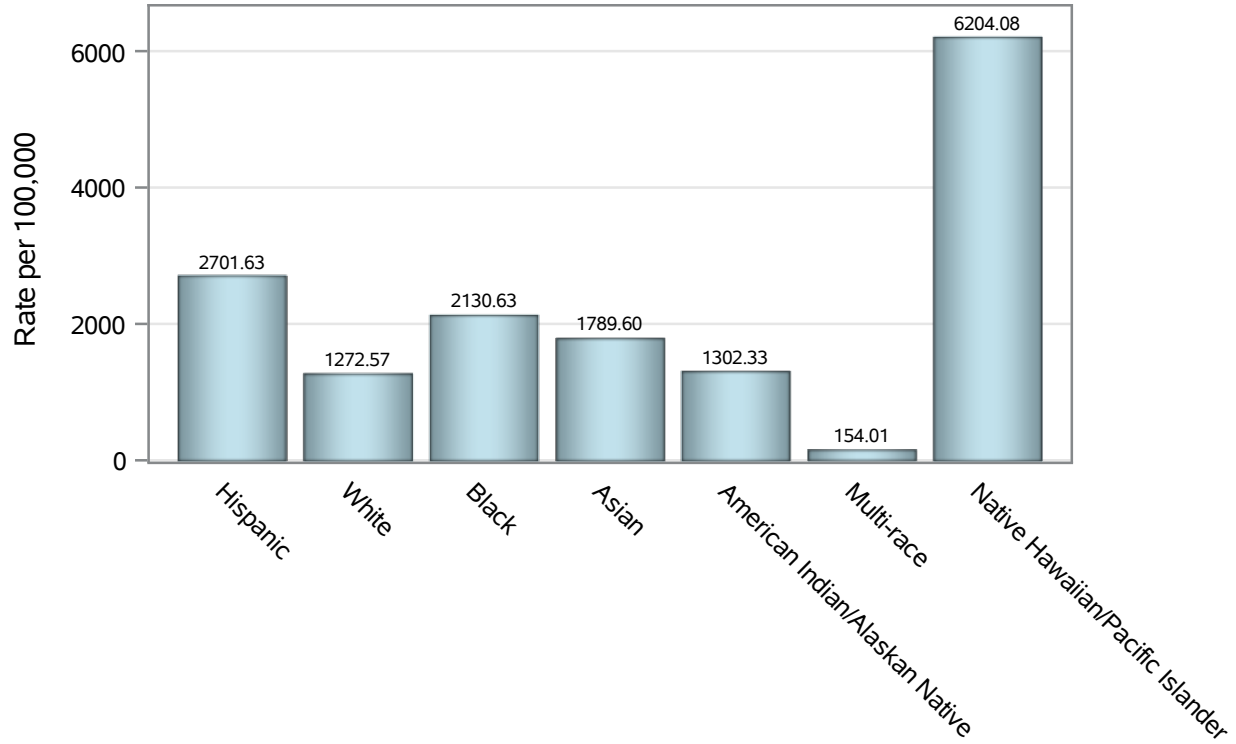
Note3: Hospitalizations are regardless of deceased status; Deaths are regardless of hospitalization status

**Investigations are ongoing; data are subject to change.**

**Reporting through 07OCT2020**

**Henderson zip codes include 89002, 89011, 89012, 89014, 89015, 89044, 89052, 89074.**

### Case Race/Ethnicity Rates in Henderson

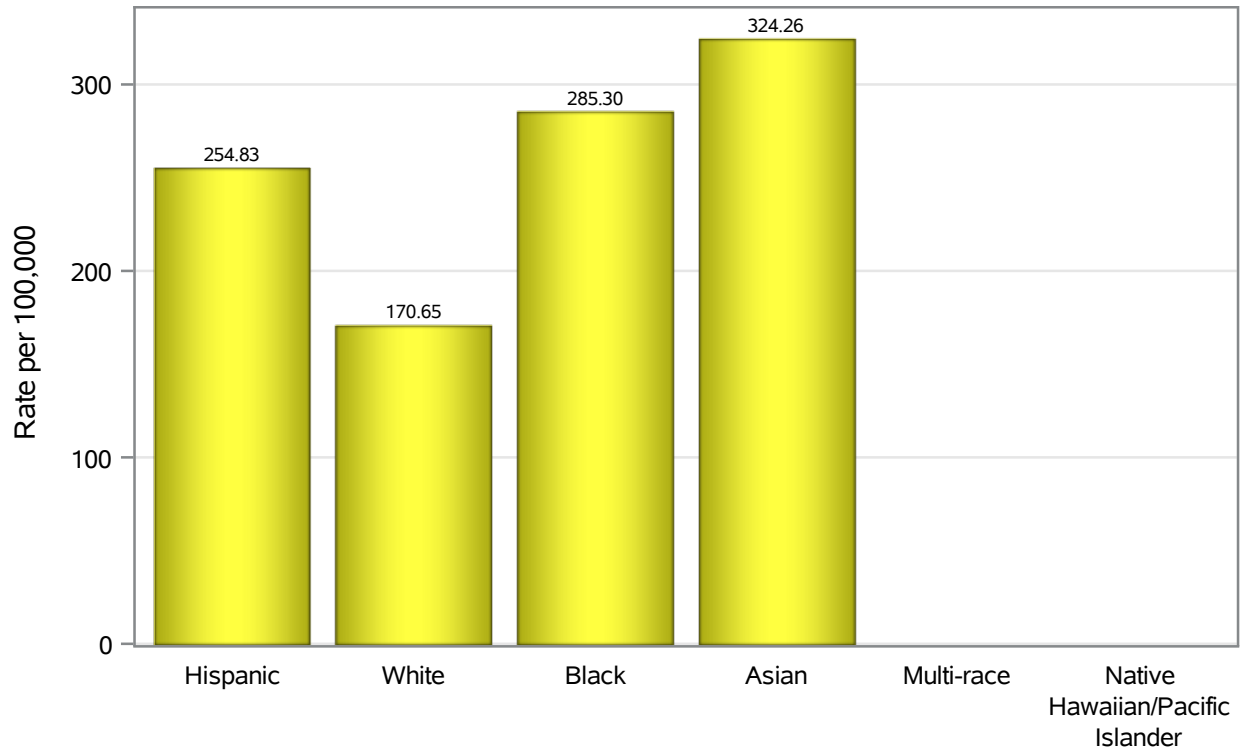


Investigations are ongoing; data are subject to change.

Reporting through 07OCT2020

Henderson zip codes include 89002, 89011, 89012, 89014, 89015, 89044, 89052, 89074.

### Hospitalization Race/Ethnicity Rates in Henderson

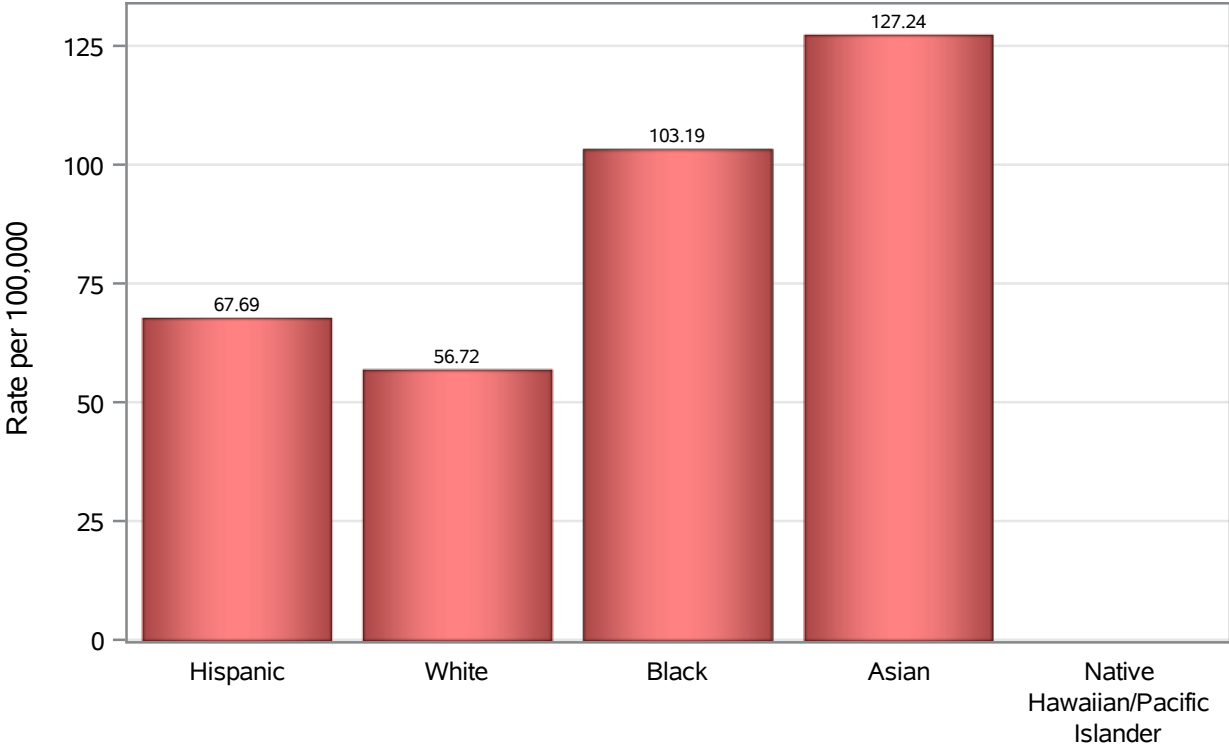


Investigations are ongoing; data are subject to change.

Reporting through 07OCT2020

Henderson zip codes include 89002, 89011, 89012, 89014, 89015, 89044, 89052, 89074.

### Death Race/Ethnicity Rates in Henderson



Investigations are ongoing; data are subject to change.

Reporting through 07OCT2020

Henderson zip codes include 89002, 89011, 89012, 89014, 89015, 89044, 89052, 89074.

**Table 6: Race/Ethnicity and COVID19 in Henderson**

Case Status	Race Ethnicity Categories	N	%	Population	Rate per 100,000
Cases	Hispanic	1357	21.7	50,229	2701.6
	White	2513	40.3	197475	1272.6
	Black	351	5.6	16,474	2130.6
	Asian	436	7.0	24,363	1789.6
	American Indian/Alaskan Native	14	0.2	1,075	1302.3
	Multi-race	17	0.3	11,038	154.01
	Native Hawaiian/Pacific Islander	76	1.2	1,225	6204.1
	Unknown	1478	23.7	.	.
Hospitalizations	Hispanic	128	18.4	50,229	254.83
	White	337	48.4	197475	170.65
	Black	47	6.7	16,474	285.30
	Asian	79	11.3	24,363	324.26
	Multi-race	4	0.6	11,038	.
	Native Hawaiian/Pacific Islander	9	1.3	1,225	.
	Unknown	93	13.3	.	.
	Deaths	Hispanic	34	17.3	50,229
White		112	56.9	197475	56.72
Black		17	8.6	16,474	103.19
Asian		31	15.7	24,363	127.24
Native Hawaiian/Pacific Islander		1	0.5	1,225	.
Unknown		2	1.0	.	.

Note1: Population data source for calculating rate estimates: U.S. Census Bureau, ACS 5-year estimate.

Note2: Rates for categories with fewer than 12 cases are suppressed due to high relative standard error.

Note3: Hospitalizations are regardless of deceased status; Deaths are regardless of hospitalization status

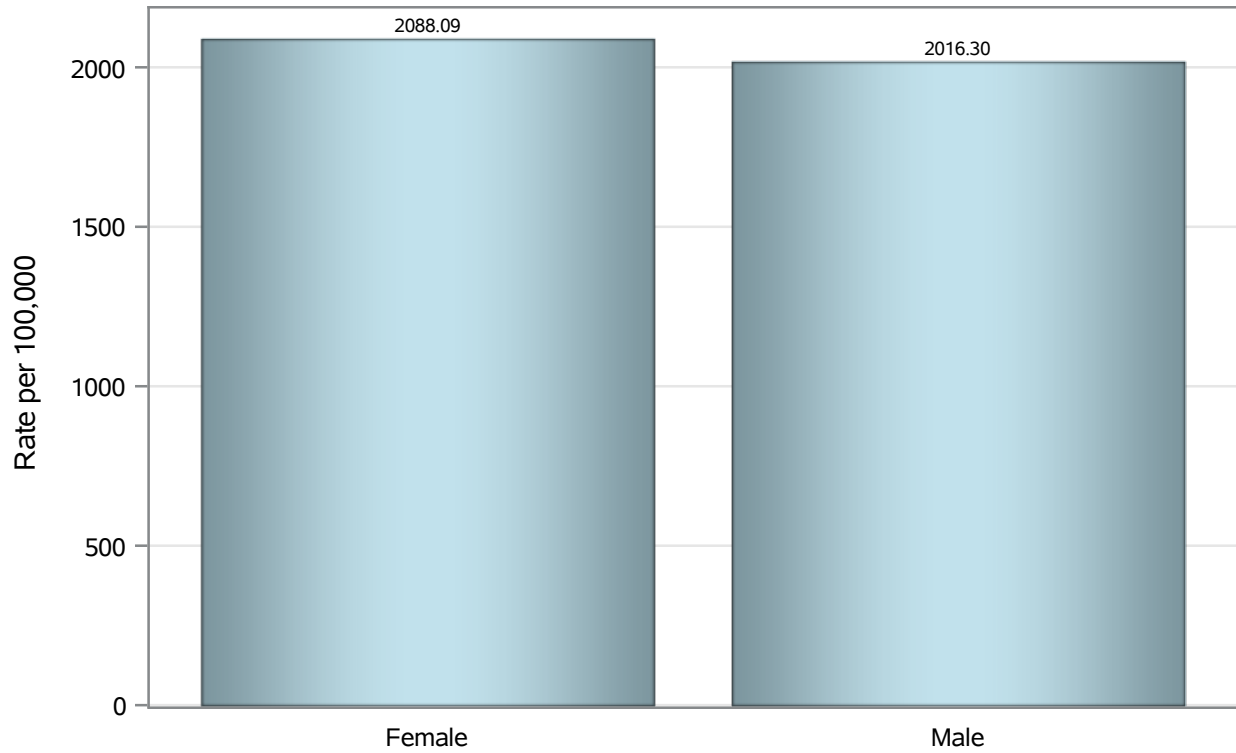
**Investigations are ongoing; data are subject to change.**

**Reporting through 07OCT2020**

**Henderson zip codes include 89002, 89011, 89012, 89014, 89015, 89044, 89052, 89074.**



### Case Birth Sex Rates in Henderson

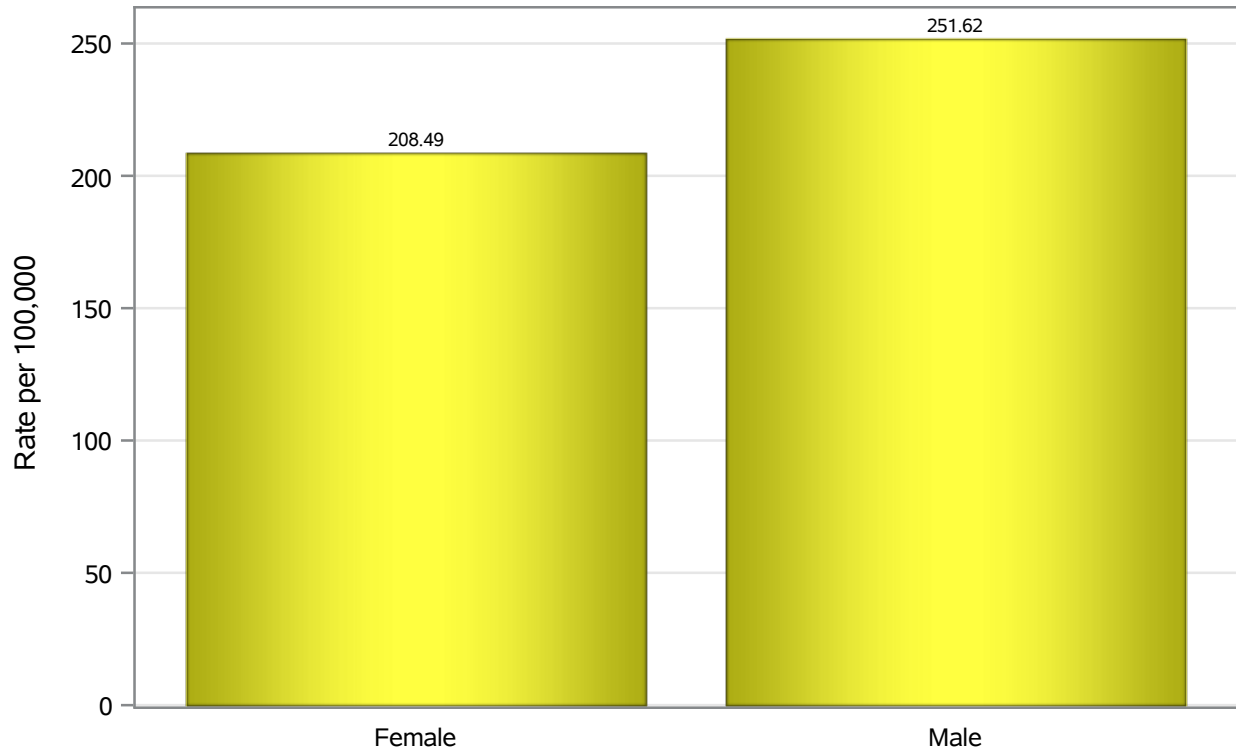


Investigations are ongoing; data are subject to change.

Reporting through 07OCT2020

Henderson zip codes include 89002, 89011, 89012, 89014, 89015, 89044, 89052, 89074.

### Hospitalization Birth Sex Rates in Henderson

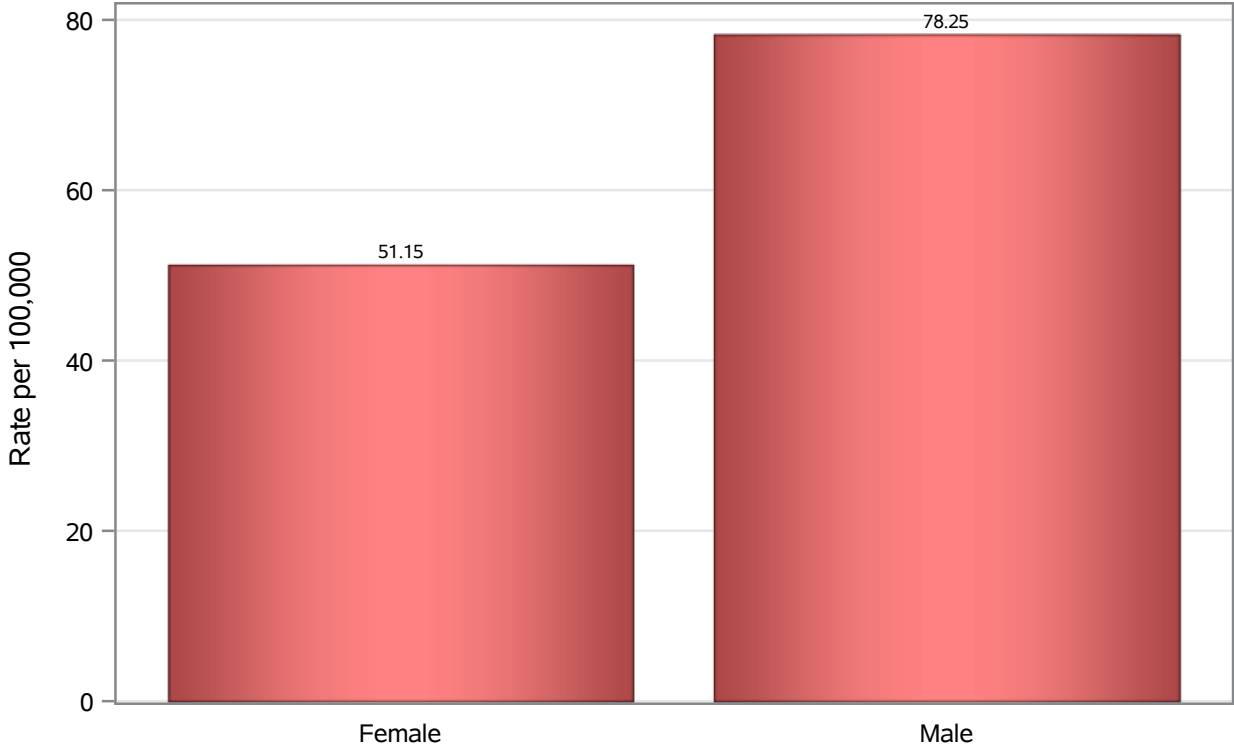


Investigations are ongoing; data are subject to change.

Reporting through 07OCT2020

Henderson zip codes include 89002, 89011, 89012, 89014, 89015, 89044, 89052, 89074.

### Death Birth Sex Rates in Henderson



Investigations are ongoing; data are subject to change.

Reporting through 07OCT2020

Henderson zip codes include 89002, 89011, 89012, 89014, 89015, 89044, 89052, 89074.

**Table 7: Birth Sex and COVID19 in Henderson**

Case Status	Birth Sex Categories	N	%	Population	Rate per 100,000
Cases	Female	3225	51.7	154447	2088.1
	Male	2989	47.9	148242	2016.3
	Unknown	28	0.4	.	.
Hospitalizations	Female	322	46.2	154447	208.49
	Male	373	53.5	148242	251.62
	Unknown	2	0.3	.	.
Deaths	Female	79	40.1	154447	51.15
	Male	116	58.9	148242	78.25
	Unknown	2	1.0	.	.

Note1: Population data source for calculating rate estimates: U.S. Census Bureau, ACS 5-year estimate.

Note2: Rates for categories with fewer than 12 cases are suppressed due to high relative standard error.

Note3: Hospitalizations are regardless of deceased status; Deaths are regardless of hospitalization status

**Investigations are ongoing; data are subject to change.**

**Reporting through 07OCT2020**

**Henderson zip codes include 89002, 89011, 89012, 89014, 89015, 89044, 89052, 89074.**