

COVID-19 Trends

Clark County, Nevada

Document creation date: October 28, 2020

- **General notes:** This report uses surveillance data collected by the Southern Nevada Health District. Due to delays related to laboratory processing, reporting, and case investigations, data from the most recent days are less complete than data from older time points. For this reason, as of June 10, 2020 this report will not display data from the previous three days prior to the date that the report was created. As many case investigations are ongoing, all data presented in this report are considered preliminary and subject to change. Data regarding cases, hospitalizations, deaths, and labs were last updated October 28, 2020 at 12:00 AM, and data is reported up through October 24, 2020.
- **Cases:** Symptom onset date was used for aggregating cases. If symptom onset date was missing, the following dates were substituted in this order: diagnosis date, lab collection date, report date (date case was reported to SNHD), event creation date (date case was entered into TriSano, SNHD's surveillance system).
- **Hospitalizations:** Admission date was used for aggregating hospitalizations. If admission date was missing, report date was substituted. If a person had more than one hospitalization after his/her COVID-19 diagnosis, only the first admission date was used.
- **Deaths:** Date of death was used for aggregating deaths. If date of death was missing, report date was used.
- For the "7-Day Average of Daily New Cases per 100K, by Age Group (Years)" graph and table, the population data source for calculating rate estimates was the "2019 ASRHO Estimates and Projections Summary for 2020, Office of the State Demographer for Nevada." Rates for individual age categories may be based on small numbers, which may give unstable estimates.
- All graphs in this report show data from approximately 60 days prior to the date of the report.
- All tables show data from the last 14 days before the current date, with the exception of the "Percent Change in Weekly Totals from Previous Week", which displays data from the previous eight completed weeks.
- For the "Percent of People Receiving COVID-19 Viral Tests Who Have Positive Results" graph, one person who has multiple specimens collected in one day is only reported once. If any of that person's tests are positive, that person counts as a positive result. If all of that individual's tests are negative, that person counts as a negative result. Laboratory tests were included if they were a test assessing for the presence of SARS-CoV-2 viral RNA, for example PCR tests. Antibody tests were excluded.

COVID-19 Cases

Clark County, NV

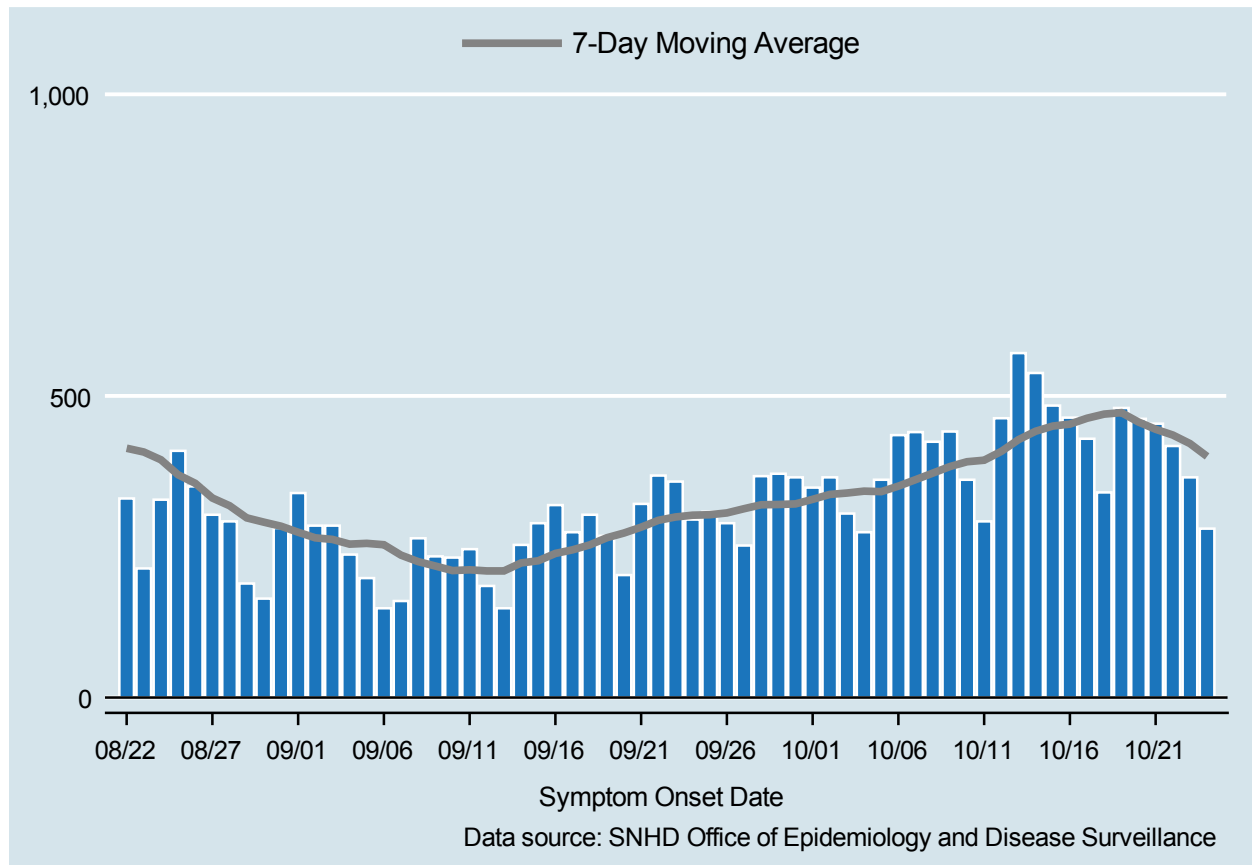


Table 1: COVID-19 Cases per Day, Clark County, NV

Date	Cases Per Day	7-Day Moving Average
OCT 11	292	393.4
OCT 12	463	408.0
OCT 13	571	427.4
OCT 14	538	441.4
OCT 15	484	450.0
OCT 16	464	453.3
OCT 17	429	463.0
OCT 18	340	469.9
OCT 19	480	472.3
OCT 20	462	456.7
OCT 21	454	444.7
OCT 22	417	435.1
OCT 23	365	421.0
OCT 24	280	399.7

COVID-19 Hospitalizations

Clark County, NV

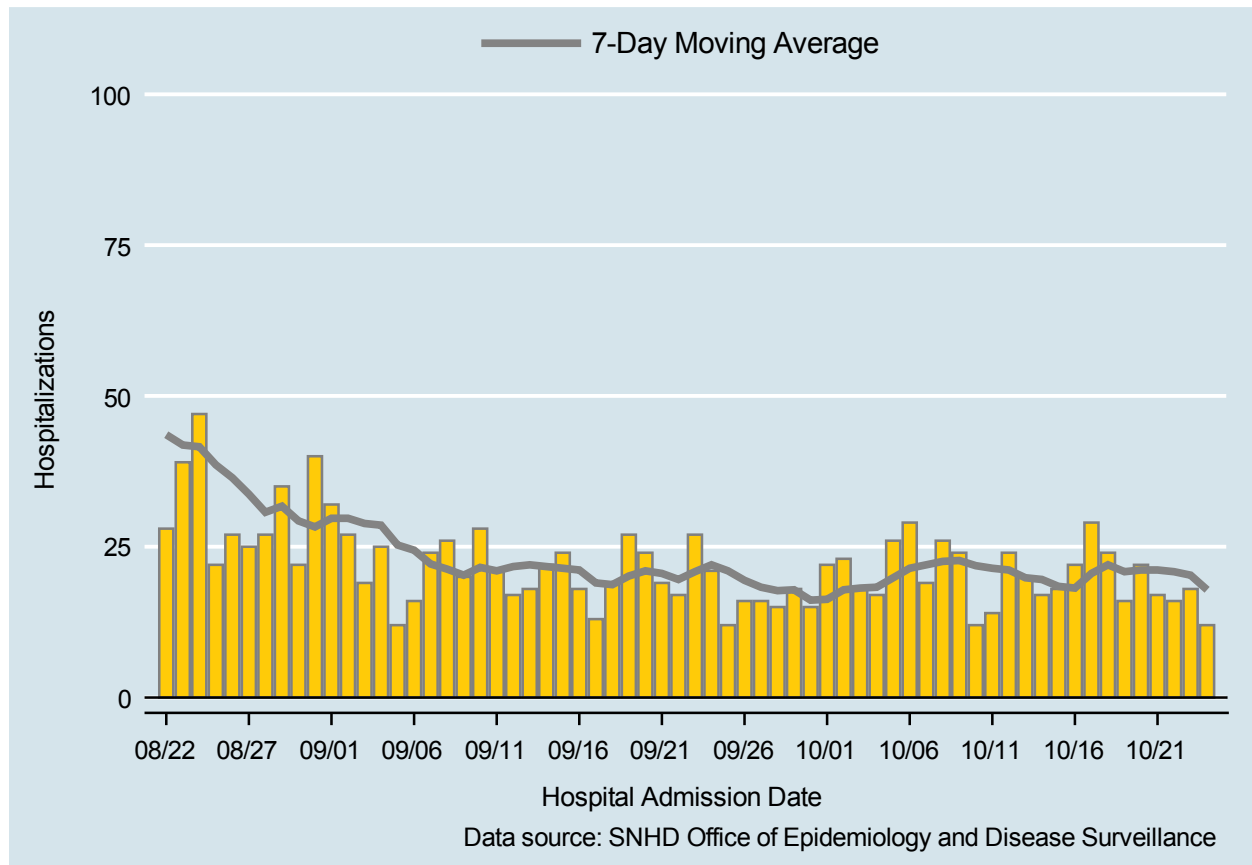


Table 2: COVID-19 Hospitalizations per Day, Clark County, NV

Date	Hospitalizations Per Day	7-Day Moving Average
OCT 11	14	21.4
OCT 12	24	21.1
OCT 13	20	19.9
OCT 14	17	19.6
OCT 15	18	18.4
OCT 16	22	18.1
OCT 17	29	20.6
OCT 18	24	22.0
OCT 19	16	20.9
OCT 20	22	21.1
OCT 21	17	21.1
OCT 22	16	20.9
OCT 23	18	20.3
OCT 24	12	17.9

COVID-19 Deaths

Clark County, NV

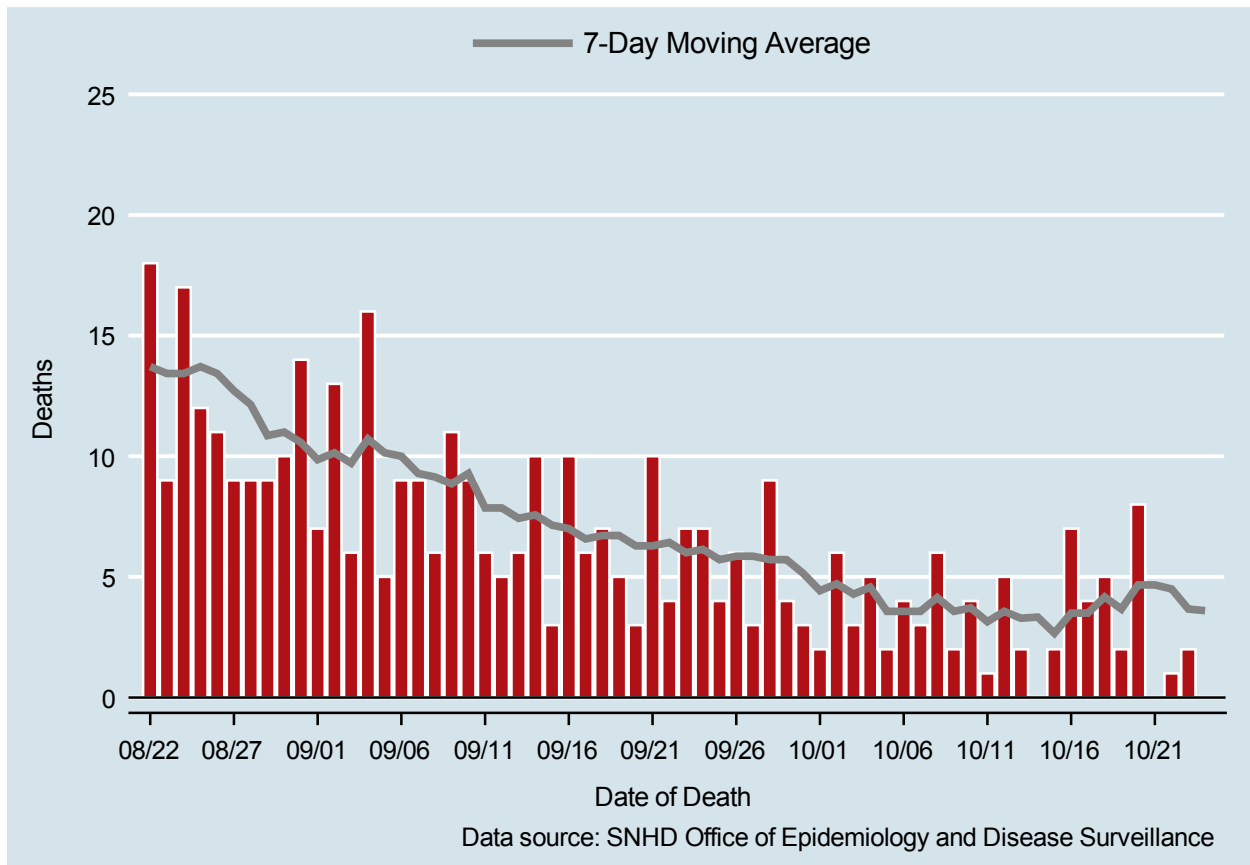


Table 3: COVID-19 Deaths per Day, Clark County, NV

Date	Deaths Per Day	7-Day Moving Average
OCT 11	1	3.1
OCT 12	5	3.6
OCT 13	2	3.3
OCT 14	.	3.3
OCT 15	2	2.7
OCT 16	7	3.5
OCT 17	4	3.5
OCT 18	5	4.2
OCT 19	2	3.7
OCT 20	8	4.7
OCT 21	.	4.7
OCT 22	1	4.5
OCT 23	2	3.7
OCT 24	.	3.6

7-Day Average of Daily New Cases per 100K, by Age Group (Years)

Clark County, NV

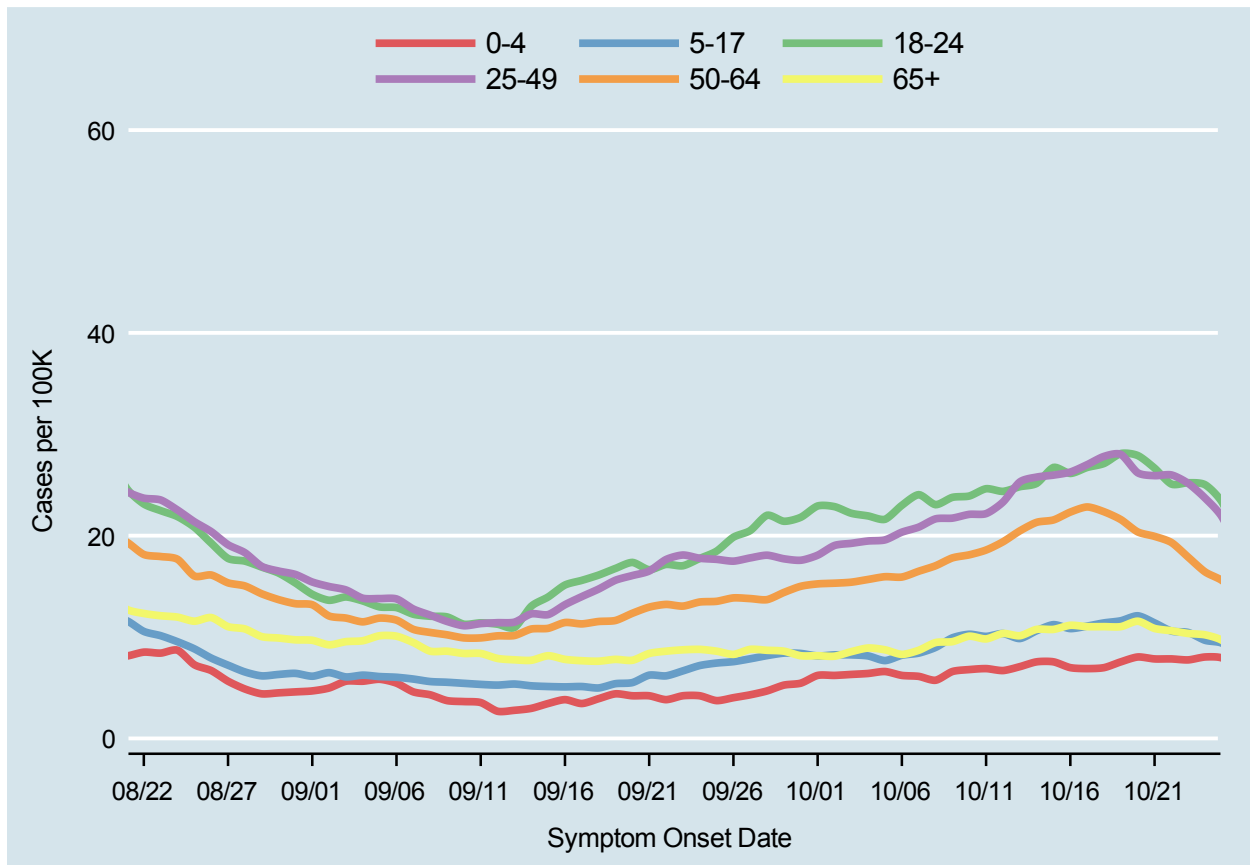
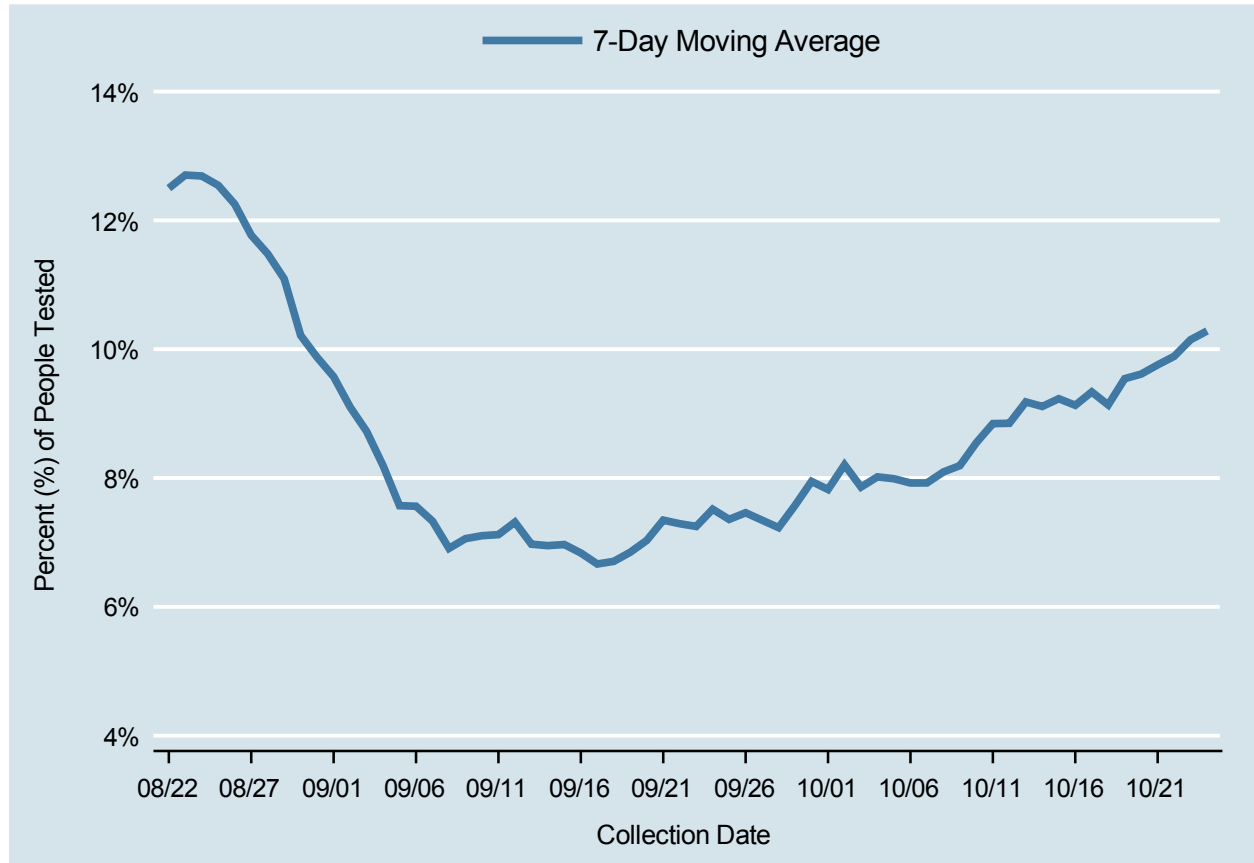


Table 4: 7-Day Average of Daily New Cases per 100K, by Age Group (Years)

Date	0-4	5-17	18-24	25-49	50-64	65+
OCT 11	6.9	10.1	24.6	22.2	18.6	9.8
OCT 12	6.7	10.3	24.4	23.3	19.4	10.4
OCT 13	7.1	9.9	24.8	25.3	20.5	10.1
OCT 14	7.6	10.6	25.2	25.8	21.3	10.8
OCT 15	7.6	11.2	26.7	26.0	21.5	10.8
OCT 16	7.0	10.8	26.1	26.3	22.3	11.2
OCT 17	6.9	11.1	26.7	27.0	22.8	11.0
OCT 18	7.0	11.4	27.1	27.8	22.4	11.0
OCT 19	7.6	11.6	28.1	28.0	21.6	11.0
OCT 20	8.0	12.1	27.9	26.2	20.4	11.6
OCT 21	7.8	11.4	26.7	25.9	19.9	10.8
OCT 22	7.8	10.6	25.1	26.0	19.3	10.6
OCT 23	7.7	10.4	25.2	25.2	17.9	10.4
OCT 24	8.0	9.7	25.0	23.7	16.4	10.2

Percent of People Receiving COVID-19 Vital Tests Who Have Positive Results

Clark County, NV



Report prepared by: Kellie Watkins, PhD, MS, Ying Zhang, PhD, MPH, Kathryn Barker, MPH (Office of Epidemiology and Disease Surveillance) and Lei Zhang, MS (Office of Informatics)