



COVID-19 Trends

Clark County, Nevada

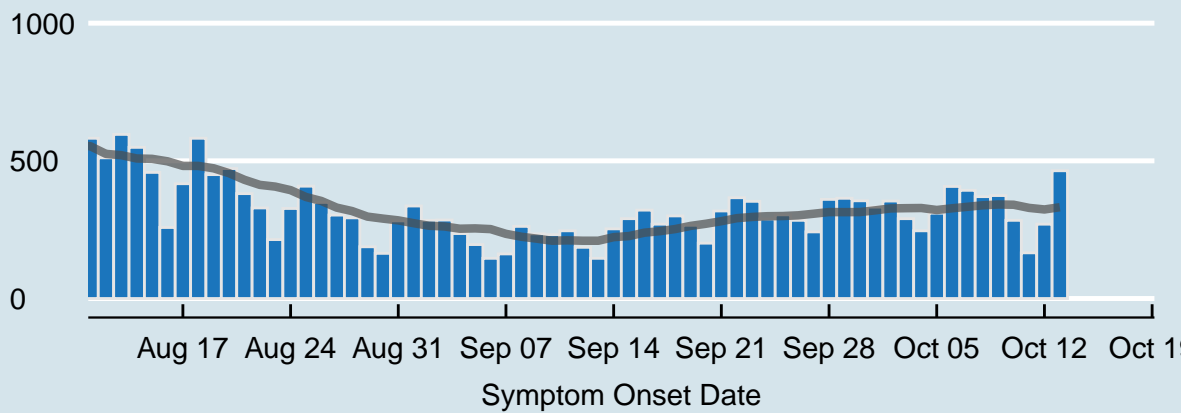
Document creation date: October 17, 2020

- General notes: This report uses surveillance data collected by the Southern Nevada Health District. Due to delays related to laboratory processing, reporting, and case investigations, data from the most recent days are less complete than data from older time points. For this reason, as of June 10, 2020 this report will not display data from the previous three days prior to the date that the report was created. As many case investigations are ongoing, all data presented in this report are considered preliminary and subject to change. Data regarding cases, hospitalizations, deaths, and labs were last updated October 17 at 12:00 AM, and data is reported up through October 13, 2020.
- Cases: Symptom onset date was used for aggregating cases. If symptom onset date was missing, the following dates were substituted in this order: diagnosis date, lab collection date, report date (date case was reported to SNHD), event creation date (date case was entered into TriSano, SNHD's surveillance system).
- Hospitalizations: Admission date was used for aggregating hospitalizations. If admission date was missing, report date was substituted. If a person had more than one hospitalization after his/her COVID-19 diagnosis, only the first admission date was used.
- Deaths: Date of death was used for aggregating deaths. If date of death was missing, report date was used.
- For the "7-Day Average of Daily New Cases per 100K, by Age Group (Years)" graph and table, the population data source for calculating rate estimates was the "2019 ASRHO Estimates and Projections Summary for 2020, Office of the State Demographer for Nevada." Rates for individual age categories may be based on small numbers, which may give unstable estimates.
- All graphs in this report show data from approximately 60 days prior to the date of the report.
- All tables show data from the last 14 days before the current date.
- For the "Percent of People Receiving COVID-19 Viral Tests Who Have Positive Results" graph, one person who has multiple specimens collected in one day is only reported once. If any of that person's tests are positive, that person counts as a positive result. If all of that individual's tests are negative, that person counts as a negative result. Laboratory tests were included if they were a test assessing for the presence of SARS-CoV-2 viral RNA, for example PCR tests. Antibody tests were excluded.

COVID-19 Cases

Clark County, NV

— 7-Day Moving Average



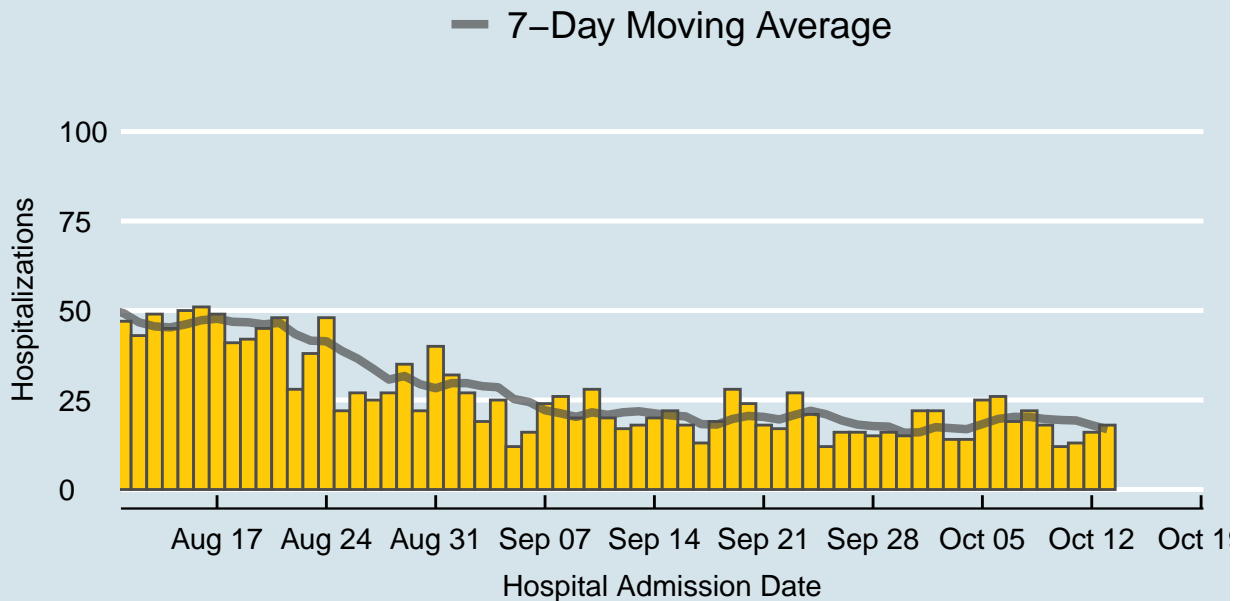
Data source: SNHD Office of Epidemiology and Disease Surveillance

Table 1: COVID-19 Cases per Day, Clark County, NV

Date	Cases per Day	7-Day Moving Average
Sep 30	355	314.0
Oct 01	332	320.1
Oct 02	354	327.3
Oct 03	290	328.1
Oct 04	246	328.7
Oct 05	310	321.6
Oct 06	407	327.7
Oct 07	393	333.1
Oct 08	370	338.6
Oct 09	374	341.4
Oct 10	284	340.6
Oct 11	166	329.1
Oct 12	270	323.4
Oct 13	464	331.6

COVID-19 Hospitalizations

Clark County, NV



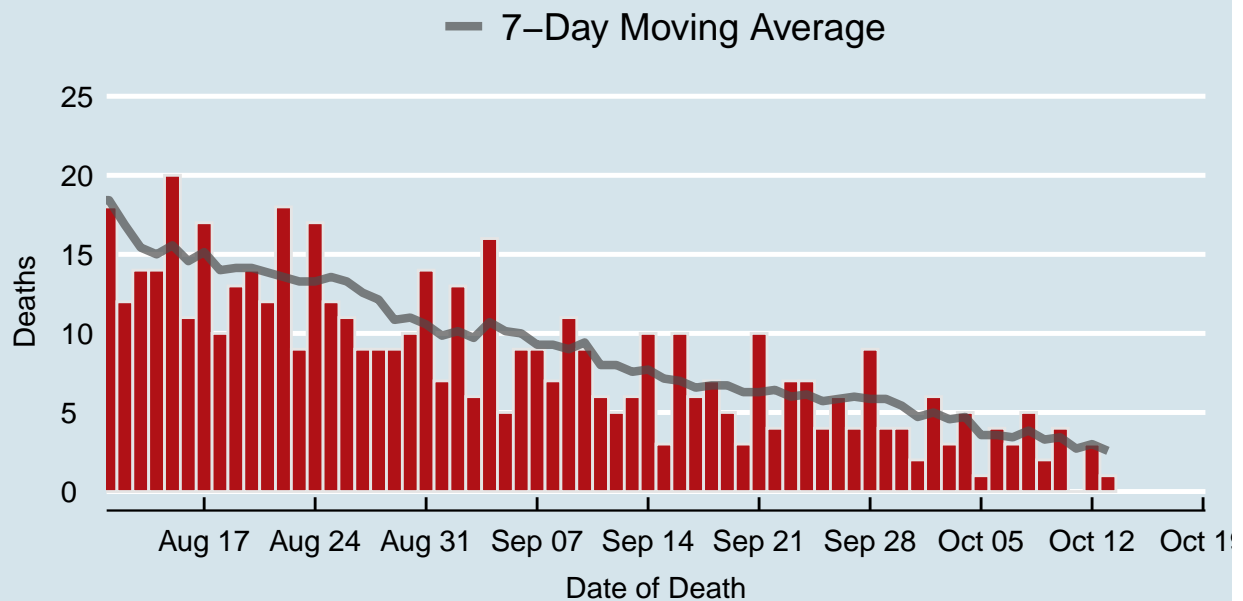
Data source: SNHD Office of Epidemiology and Disease Surveillance

Table 2: COVID-19 Hospitalizations per Day, Clark County, NV

Date	Hospitalizations per Day	7-Day Moving Average
Sep 30	15	15.9
Oct 01	22	16.0
Oct 02	22	17.4
Oct 03	14	17.1
Oct 04	14	16.9
Oct 05	25	18.3
Oct 06	26	19.7
Oct 07	19	20.3
Oct 08	22	20.3
Oct 09	18	19.7
Oct 10	12	19.4
Oct 11	13	19.3
Oct 12	16	18.0
Oct 13	18	16.9

COVID-19 Deaths

Clark County, NV



Data source: SNHD Office of Epidemiology and Disease Surveillance

Table 3: COVID-19 Deaths per Day, Clark County, NV

Date	Deaths per Day	7-Day Moving Average
Sep 30	4	5.4
Oct 01	2	4.7
Oct 02	6	5.0
Oct 03	3	4.6
Oct 04	5	4.7
Oct 05	1	3.6
Oct 06	4	3.6
Oct 07	3	3.4
Oct 08	5	3.9
Oct 09	2	3.3
Oct 10	4	3.4
Oct 11	0	2.7
Oct 12	3	3.0
Oct 13	1	2.6

7-Day Average of Daily New Cases per 100K, by Age Group (Years)

Clark County, NV

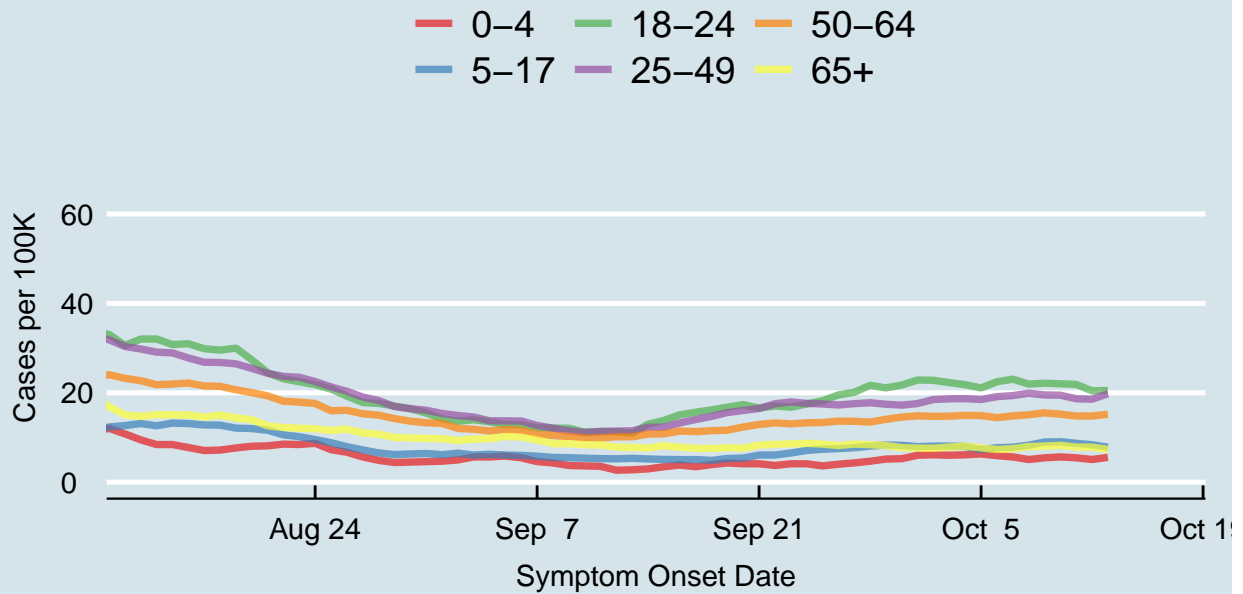
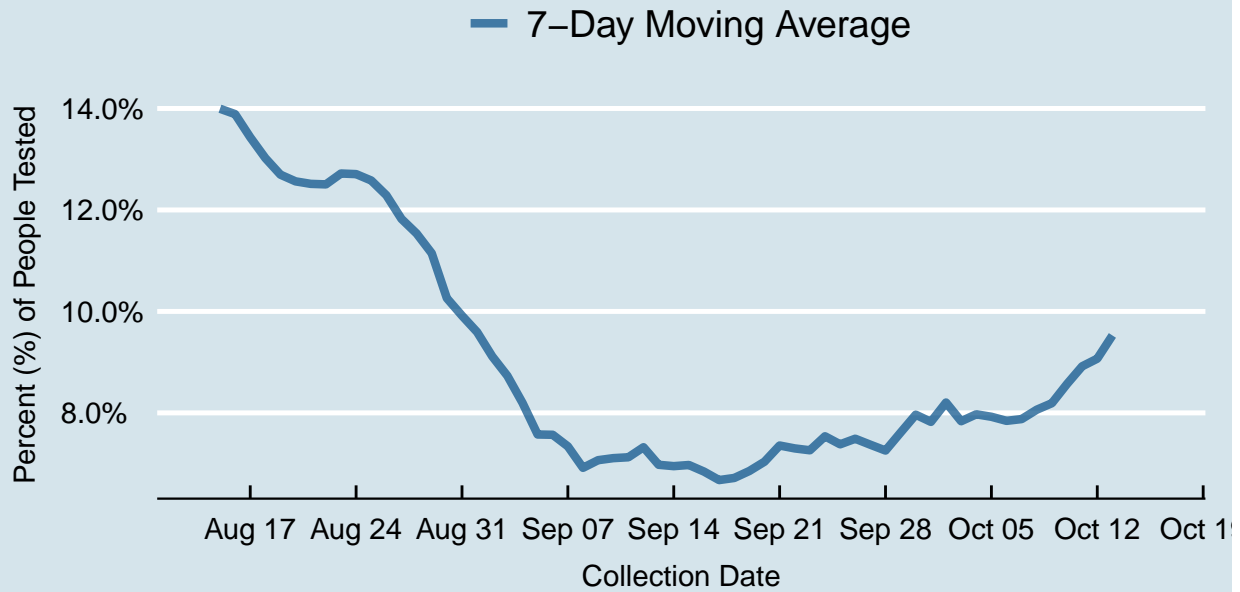


Table 4: 7-Day Average of Daily New Cases per 100K, by Age Group (Years)

Symptom Onset Date	0-4	5-17	18-24	25-49	50-64	65+
Oct 01	6.0	8.0	22.9	17.6	14.8	7.6
Oct 02	6.1	8.1	22.8	18.5	14.7	7.6
Oct 03	6.0	8.1	22.3	18.6	14.8	7.8
Oct 04	6.1	8.0	21.8	18.7	14.9	8.1
Oct 05	6.3	7.3	21.1	18.5	14.9	7.7
Oct 06	5.9	7.7	22.5	19.1	14.4	7.3
Oct 07	5.6	7.8	23.1	19.4	14.8	7.5
Oct 08	5.1	8.3	21.9	19.9	15.1	8.0
Oct 09	5.5	9.0	22.1	19.5	15.5	8.1
Oct 10	5.6	9.0	22.0	19.5	15.2	8.2
Oct 11	5.5	8.7	21.9	18.7	14.8	7.8
Oct 12	5.1	8.4	20.4	18.6	14.8	7.8
Oct 13	5.5	7.8	20.5	19.8	15.2	7.3
Sep 30	5.3	8.2	21.7	17.2	14.6	7.7

Percent of People Receiving COVID-19 Viral Tests Who Have Positive Results

Clark County, NV





Report prepared by: Kellie Watkins, PhD, MS, Ying Zhang, PhD, MPH (Office of Epidemiology and Disease Surveillance) and Lei Zhang, MS (Office of Informatics)