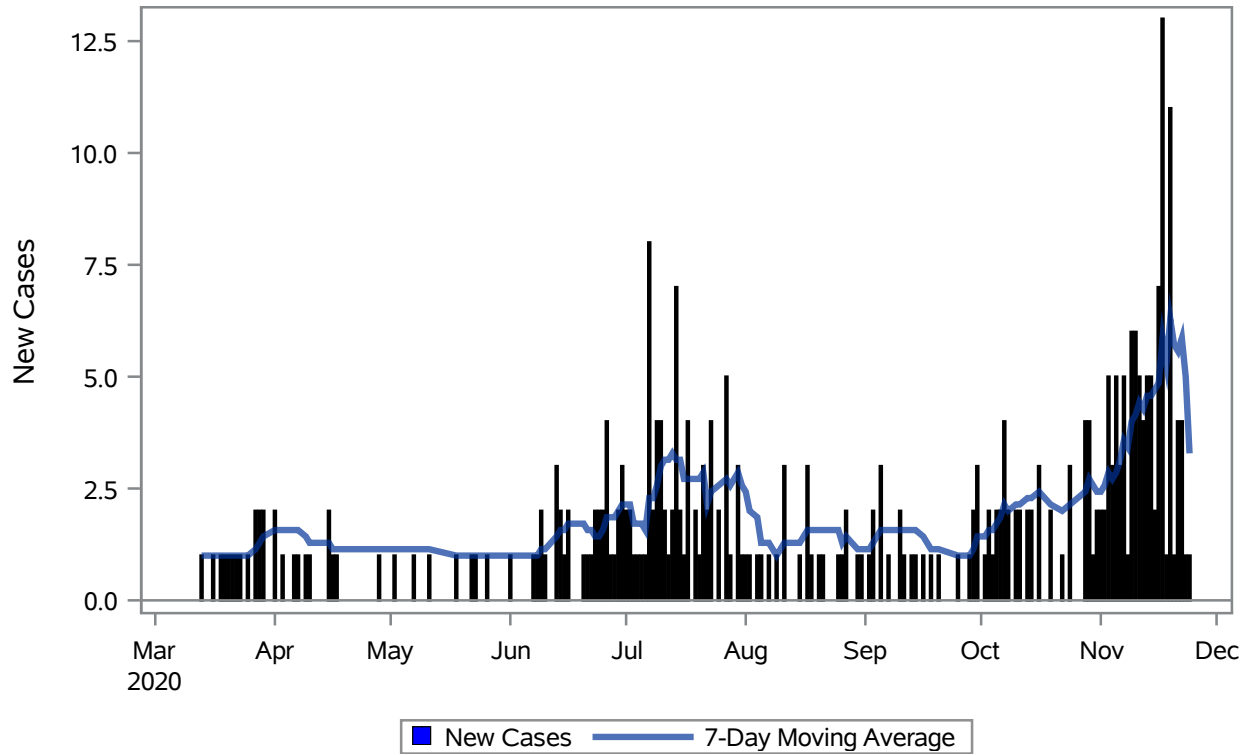


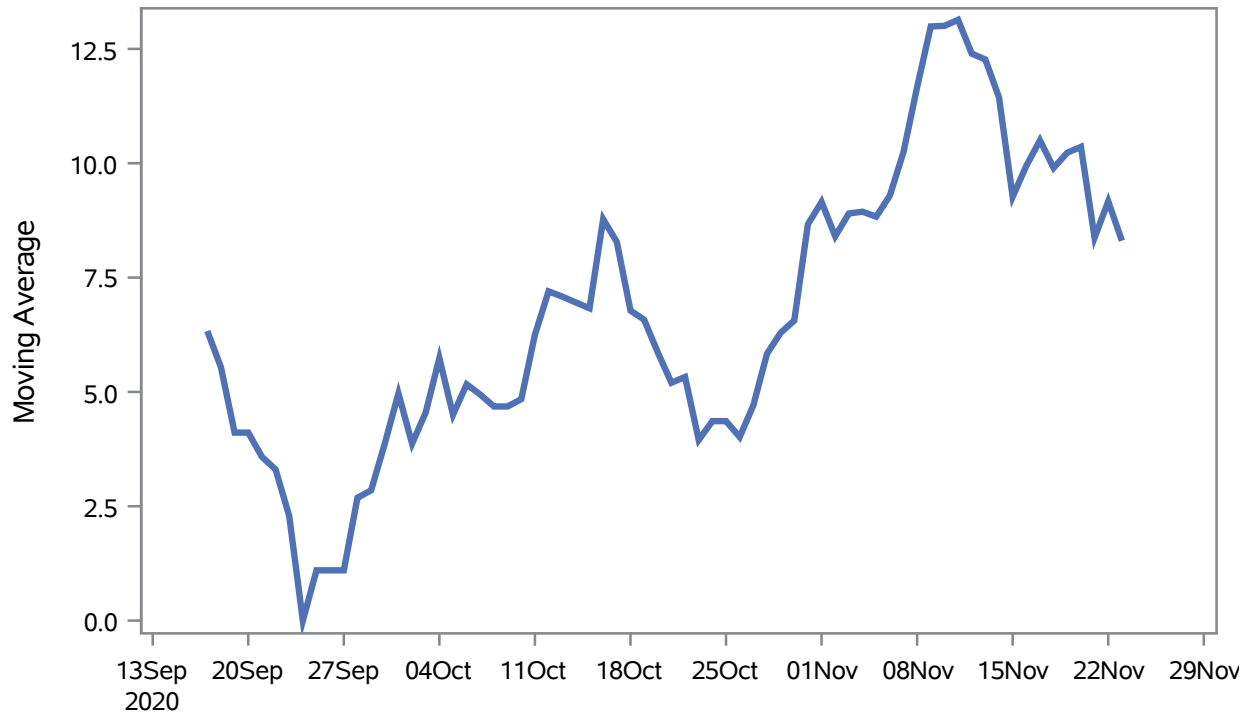
COVID19 Cases for Boulder City, 7-Day Moving Average



■ New Cases — 7-Day Moving Average

Investigations are ongoing; data are subject to change.
Reporting through 25NOV2020
Boulder City zip codes include 89005.

Percent of People Receiving COVID-19 Viral Tests Who Have Positive Results in Boulder City



Investigations are ongoing; data are subject to change.

Reporting through 25NOV2020

Boulder City zip codes include 89005.

Table 1: Age and COVID19 in Boulder City

Case Status	Age Categories	N	%	Population	Rate per 100,000
Cases	Aged 4 or less	5	1.6	659	--
	Aged 5 to 17	14	4.3	2,123	659.44
	Aged 18 to 24	27	8.4	921	2931.6
	Aged 25 to 49	119	37.0	3,509	3391.3
	Aged 50 to 64	73	22.7	3,701	1972.4
	Aged 64+	84	26.1	4,767	1762.1
Hospitalizations	Aged 50 to 64	8	27.6	3,701	--
	Aged 64+	21	72.4	4,767	440.53
Deaths	Aged 50 to 64	1	8.3	3,701	--
	Aged 64+	11	91.7	4,767	--

Note1: Population data source for calculating rate estimates: U.S. Census Bureau, ACS 5-year estimate.

Note2: Rates for categories with fewer than 12 cases are suppressed due to high relative standard error.

Note3: Hospitalizations are regardless of deceased status; Deaths are regardless of hospitalization status

**Investigations are ongoing; data are subject to change.
Reporting through 25NOV2020
Boulder City zip codes include 89005.**

Table 2: Race/Ethnicity and COVID19 in Boulder City

Case Status	Race Ethnicity Categories	N	%	Population	Rate per 100,000
Cases	Hispanic	27	8.4	1,164	2319.6
	White	213	66.1	13,569	1569.8
	Black	--	--	51	--
	Asian	--	--	199	--
	American Indian/Alaskan Native	--	--	140	--
	Unknown	76	23.6	.	.
Hospitalizations	Hispanic	1	3.4	1,164	--
	White	23	79.3	13,569	169.50
	Unknown	5	17.2	.	.
Deaths	White	11	91.7	13,569	--
	Unknown	1	8.3	.	.

Note1: Population data source for calculating rate estimates: U.S. Census Bureau, ACS 5-year estimate.

Note2: Rates for categories with fewer than 12 cases are suppressed due to high relative standard error. Counts for categories with population less than 500 are suppressed for confidentiality.

Note3: Due to suppression, the total counts per case status may not equal expected totals.

Note4: Hospitalizations are regardless of deceased status; Deaths are regardless of hospitalization status

**Investigations are ongoing; data are subject to change.
Reporting through 25NOV2020
Boulder City zip codes include 89005.**