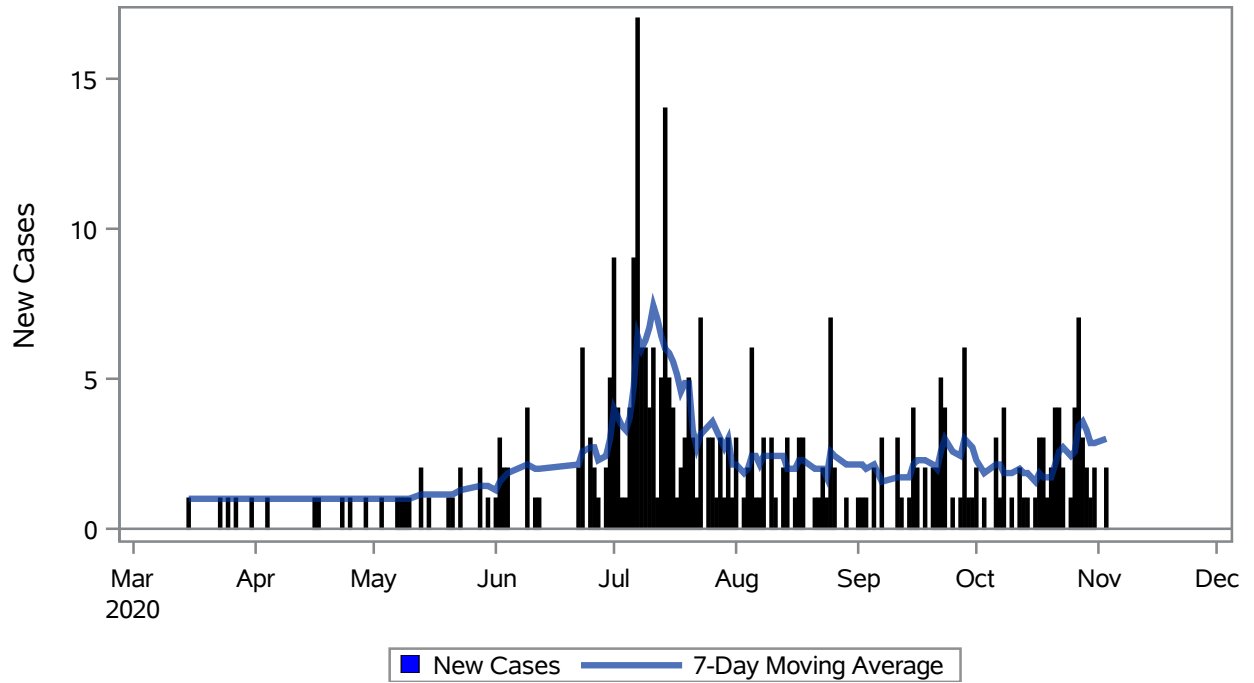


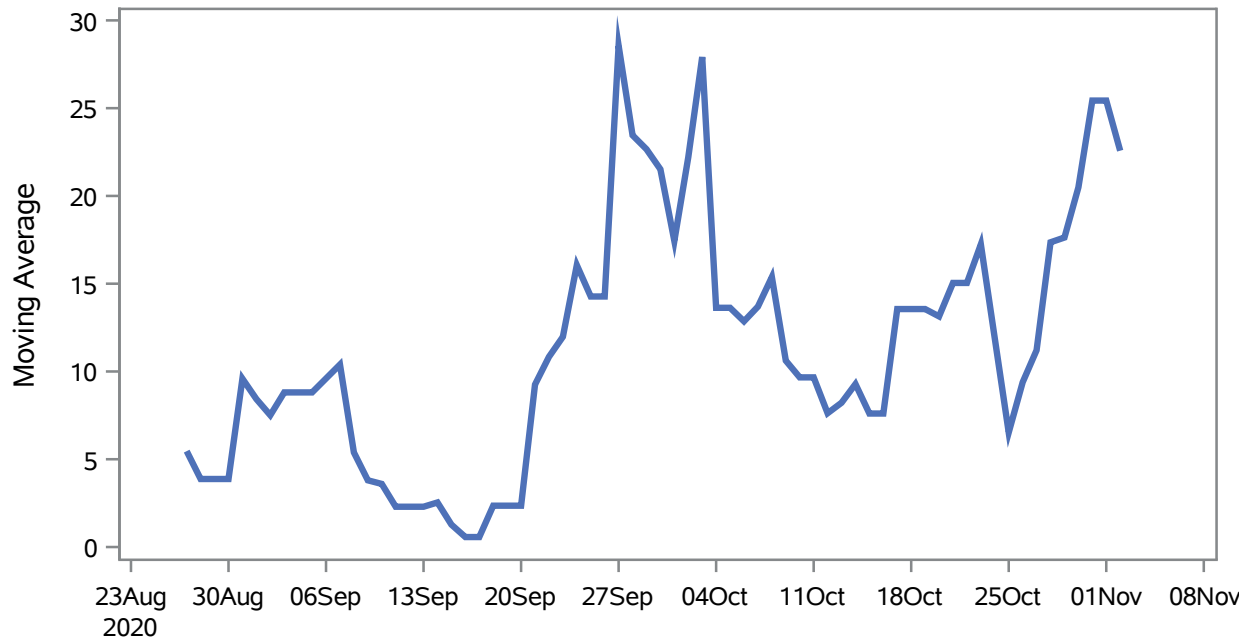
### COVID19 Cases for Mesquite, 7-Day Moving Average



Investigations are ongoing; data are subject to change.  
Reporting through 04NOV2020

Mesquite zip codes include 89027,89034. The U.S. Census Bureau data uses Zip Code Tabulation Area (ZCTA), which does not list 89034 but has incorporated areas of 89034 within 89027 through the American Community Survey (ACS) 5-Year Estimates.

### Percent of People Receiving COVID-19 Viral Tests Who Have Positive Results in Mesquite



Investigations are ongoing; data are subject to change.  
Reporting through 04NOV2020

Mesquite zip codes include 89027,89034. The U.S. Census Bureau data uses Zip Code Tabulation Area (ZCTA), which does not list 89034 but has incorporated areas of 89034 within 89027 through the American Community Survey (ACS) 5-Year Estimates.

**Table 1: Age and COVID19 in Mesquite**

Case Status	Age Categories	N	%	Population	Rate per 100,000
Cases	Aged 4 or less	4	1.2	702	--
	Aged 5 to 17	12	3.6	2,217	541.27
	Aged 18 to 24	31	9.2	938	3304.9
	Aged 25 to 49	110	32.7	3,386	3248.7
	Aged 50 to 64	84	25.0	3,371	2491.8
	Aged 64+	95	28.3	7,290	1303.2
Hospitalizations	Aged 25 to 49	4	14.3	3,386	--
	Aged 50 to 64	8	28.6	3,371	--
	Aged 64+	16	57.1	7,290	219.48
Deaths	Aged 64+	4	100	7,290	--

Note1: Population data source for calculating rate estimates: U.S. Census Bureau, ACS 5-year estimate.

Note2: Rates for categories with fewer than 12 cases are suppressed due to high relative standard error.

Note3: Hospitalizations are regardless of deceased status; Deaths are regardless of hospitalization status

**Investigations are ongoing; data are subject to change.**

**Reporting through 04NOV2020**

**Mesquite zip codes include 89027,89034. The U.S. Census Bureau data uses Zip Code Tabulation Area (ZCTA), which does not list 89034 but has incorporated areas of 89034 within 89027 through the American Community Survey (ACS) 5-Year Estimates.**

**Table 2: Race/Ethnicity and COVID19 in Mesquite**

Case Status	Race Ethnicity Categories	N	%	Population	Rate per 100,000
Cases	Hispanic	155	46.1	3,738	4146.6
	White	139	41.4	13,120	1059.5
	Asian	--	--	486	--
	American Indian/Alaskan Native	--	--	95	--
	Native Hawaiian/Pacific Islander	--	--	30	--
	Unknown	37	11.0	.	.
Hospitalizations	Hispanic	13	46.4	3,738	347.78
	White	13	46.4	13,120	99.09
	Native Hawaiian/Pacific Islander	--	--	30	--
	Unknown	--	--	.	.
Deaths	White	4	100	13,120	--

Note1: Population data source for calculating rate estimates: U.S. Census Bureau, ACS 5-year estimate.

Note2: Rates for categories with fewer than 12 cases are suppressed due to high relative standard error. Counts for categories with population less than 500 are suppressed for confidentiality.

Note3: Due to suppression, the total counts per case status may not equal expected totals.

Note4: Hospitalizations are regardless of deceased status; Deaths are regardless of hospitalization status

**Investigations are ongoing; data are subject to change.**

**Reporting through 04NOV2020**

**Mesquite zip codes include 89027,89034. The U.S. Census Bureau data uses Zip Code Tabulation Area (ZCTA), which does not list 89034 but has incorporated areas of 89034 within 89027 through the American Community Survey (ACS) 5-Year Estimates.**

**Table 3: Birth Sex and COVID19 in Mesquite**

Case Status	Birth Sex Categories	N	%	Population	Rate per 100,000
Cases	Female	206	61.3	9,111	2261.0
	Male	127	37.8	8,793	1444.3
	Unknown	3	0.9	.	.
Hospitalizations	Female	17	60.7	9,111	186.59
	Male	11	39.3	8,793	--
Deaths	Male	4	100	8,793	--

Note1: Population data source for calculating rate estimates: U.S. Census Bureau, ACS 5-year estimate.

Note2: Rates for categories with fewer than 12 cases are suppressed due to high relative standard error. Counts for categories with population less than 500 are suppressed for confidentiality.

Note3: Hospitalizations are regardless of deceased status; Deaths are regardless of hospitalization status

**Investigations are ongoing; data are subject to change.**

**Reporting through 04NOV2020**

**Mesquite zip codes include 89027,89034. The U.S. Census Bureau data uses Zip Code Tabulation Area (ZCTA), which does not list 89034 but has incorporated areas of 89034 within 89027 through the American Community Survey (ACS) 5-Year Estimates.**