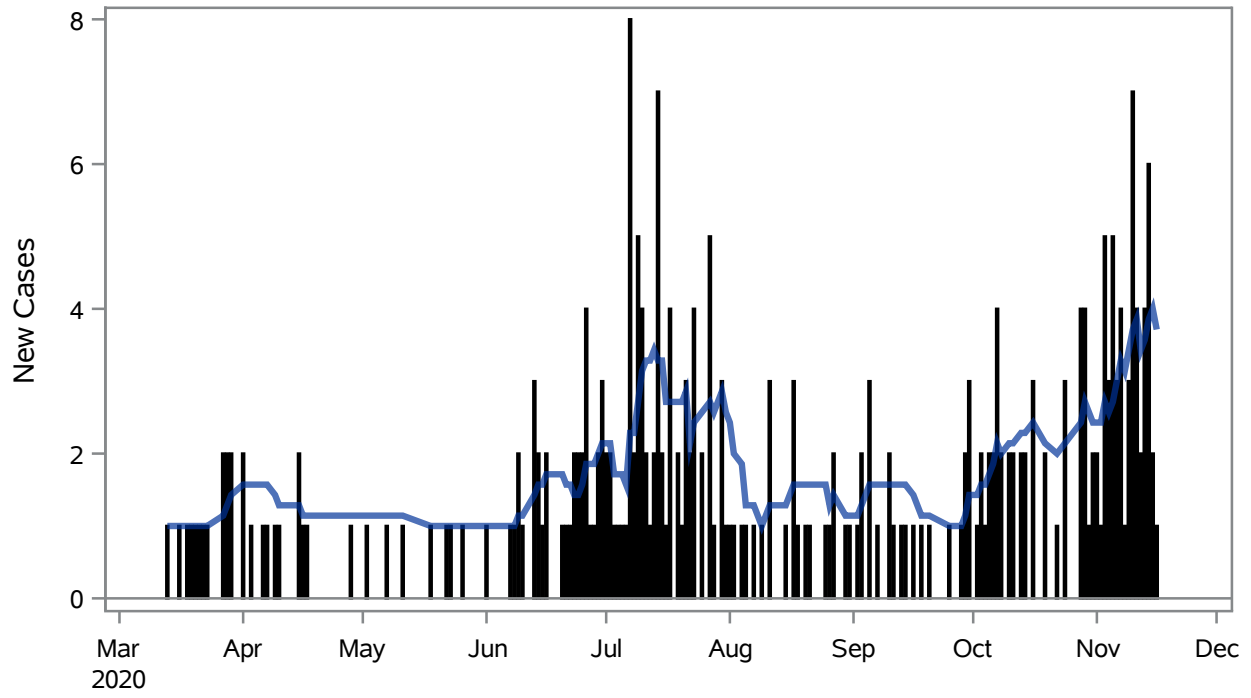


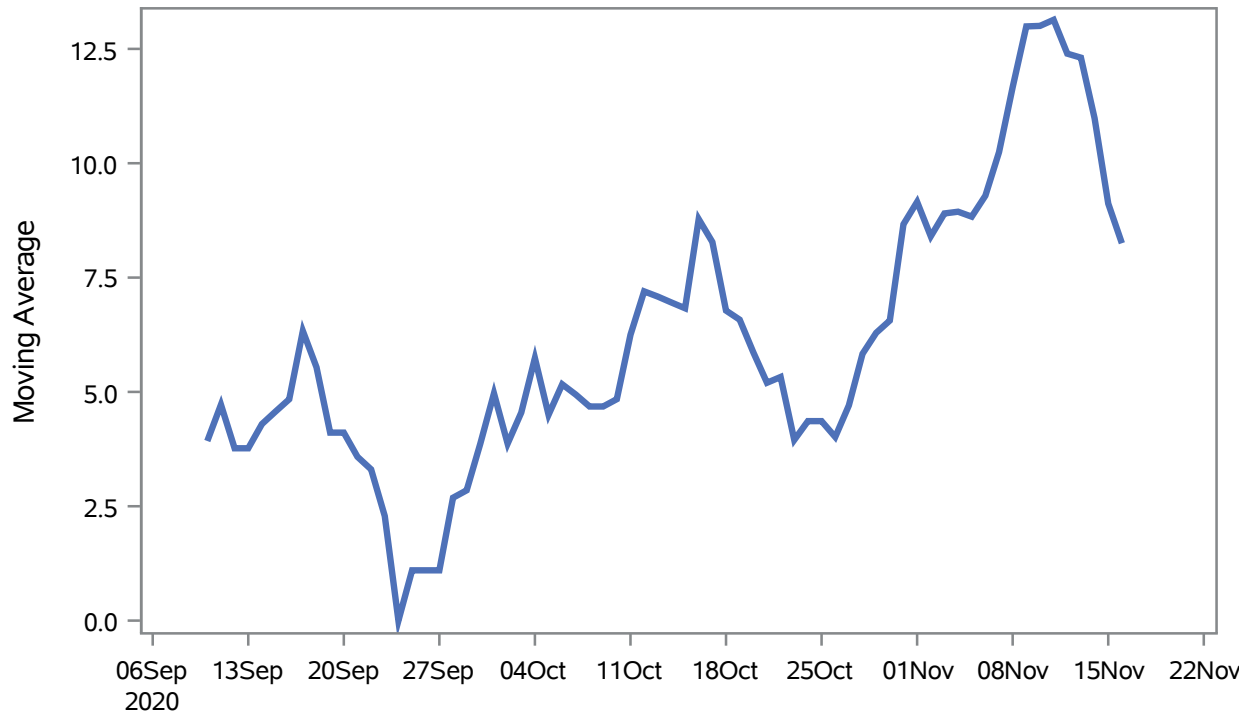
COVID19 Cases for Boulder City, 7-Day Moving Average



■ New Cases — 7-Day Moving Average

Investigations are ongoing; data are subject to change.
Reporting through 18NOV2020
Boulder City zip codes include 89005.

Percent of People Receiving COVID-19 Viral Tests Who Have Positive Results in Boulder City



Investigations are ongoing; data are subject to change.

Reporting through 18NOV2020

Boulder City zip codes include 89005.

Table 1: Age and COVID19 in Boulder City

Case Status	Age Categories	N	%	Population	Rate per 100,000
Cases	Aged 4 or less	5	1.8	659	--
	Aged 5 to 17	12	4.4	2,123	565.24
	Aged 18 to 24	22	8.0	921	2388.7
	Aged 25 to 49	101	36.9	3,509	2878.3
	Aged 50 to 64	64	23.4	3,701	1729.3
	Aged 64+	70	25.5	4,767	1468.4
Hospitalizations	Aged 25 to 49	1	3.4	3,509	--
	Aged 50 to 64	8	27.6	3,701	--
	Aged 64+	20	69.0	4,767	419.55
Deaths	Aged 50 to 64	1	10.0	3,701	--
	Aged 64+	9	90.0	4,767	--

Note1: Population data source for calculating rate estimates: U.S. Census Bureau, ACS 5-year estimate.

Note2: Rates for categories with fewer than 12 cases are suppressed due to high relative standard error.

Note3: Hospitalizations are regardless of deceased status; Deaths are regardless of hospitalization status

**Investigations are ongoing; data are subject to change.
Reporting through 18NOV2020
Boulder City zip codes include 89005.**

Table 2: Race/Ethnicity and COVID19 in Boulder City

Case Status	Race Ethnicity Categories	N	%	Population	Rate per 100,000
Cases	Hispanic	25	9.1	1,164	2147.8
	White	182	66.4	13,569	1341.3
	Black	--	--	51	--
	Asian	--	--	199	--
	American Indian/Alaskan Native	--	--	140	--
	Unknown	61	22.3	.	.
Hospitalizations	Hispanic	1	3.4	1,164	--
	White	23	79.3	13,569	169.50
	Unknown	5	17.2	.	.
Deaths	White	9	90.0	13,569	--
	Unknown	1	10.0	.	.

Note1: Population data source for calculating rate estimates: U.S. Census Bureau, ACS 5-year estimate.

Note2: Rates for categories with fewer than 12 cases are suppressed due to high relative standard error. Counts for categories with population less than 500 are suppressed for confidentiality.

Note3: Due to suppression, the total counts per case status may not equal expected totals.

Note4: Hospitalizations are regardless of deceased status; Deaths are regardless of hospitalization status

**Investigations are ongoing; data are subject to change.
Reporting through 18NOV2020
Boulder City zip codes include 89005.**