

# COVID-19 Trends

Clark County, Nevada

Document creation date: November 6, 2020

- General notes: This report uses surveillance data collected by the Southern Nevada Health District. Due to delays related to laboratory processing, reporting, and case investigations, data from the most recent days are less complete than data from older time points. For this reason, as of June 10, 2020 this report will not display data from the previous three days prior to the date that the report was created. As many case investigations are ongoing, all data presented in this report are considered preliminary and subject to change. Data regarding cases, hospitalizations, deaths, and labs were last updated November 6, 2020 at 12:00 AM, and data is reported up through November 2, 2020.
- Cases: Symptom onset date was used for aggregating cases. If symptom onset date was missing, the following dates were substituted in this order: diagnosis date, lab collection date, report date (date case was reported to SNHD), event creation date (date case was entered into TriSano, SNHD's surveillance system).
- Hospitalizations: Admission date was used for aggregating hospitalizations. If admission date was missing, report date was substituted. If a person had more than one hospitalization after his/her COVID-19 diagnosis, only the first admission date was used.
- Deaths: Date of death was used for aggregating deaths. If date of death was missing, report date was used.
- For the "7-Day Average of Daily New Cases per 100K, by Age Group (Years)" graph and table, the population data source for calculating rate estimates was the "2019 ASRHO Estimates and Projections Summary for 2020, Office of the State Demographer for Nevada." Rates for individual age categories may be based on small numbers, which may give unstable estimates.
- All graphs in this report show data from approximately 60 days prior to the date of the report.
- All tables show data from the last 14 days before the current date, with the exception of the "Percent Change in Weekly Totals from Previous Week", which displays data from the previous eight completed weeks.
- For the "Percent of People Receiving COVID-19 Viral Tests Who Have Positive Results" graph, one person who has multiple specimens collected in one day is only reported once. If any of that person's tests are positive, that person counts as a positive result. If all of that individual's tests are negative, that person counts as a negative result. Laboratory tests were included if they were a test assessing for the presence of SARS-CoV-2 viral RNA, for example PCR tests. Antibody tests were excluded.

# COVID-19 Cases

Clark County, NV

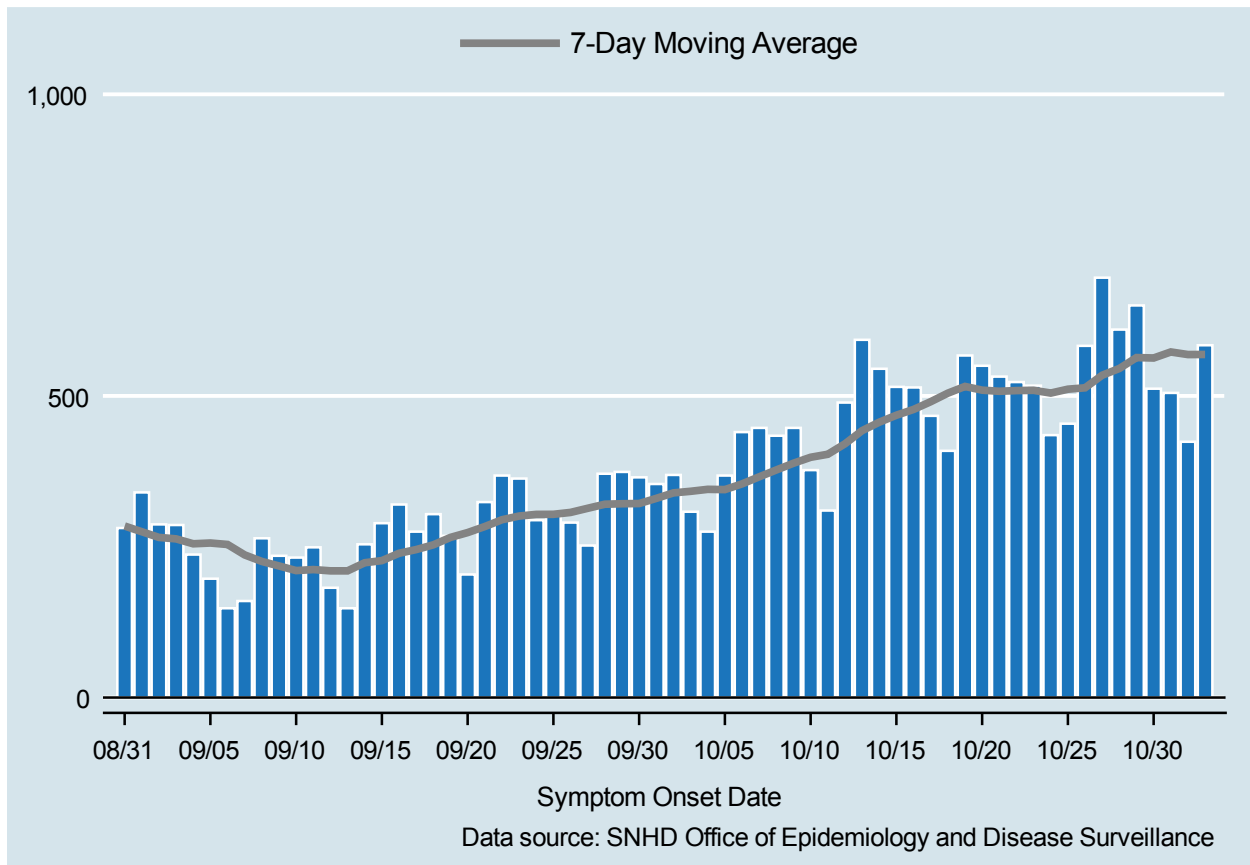


Table 1: COVID-19 Cases per Day, Clark County, NV

Date	Cases Per Day	7-Day Moving Average
OCT 20	550	509.6
OCT 21	532	507.7
OCT 22	523	508.9
OCT 23	517	509.3
OCT 24	435	504.7
OCT 25	454	511.1
OCT 26	583	513.4
OCT 27	696	534.3
OCT 28	610	545.4
OCT 29	650	563.6
OCT 30	512	562.9
OCT 31	505	572.9
NOV 01	424	568.6
NOV 02	584	568.7

# COVID-19 Hospitalizations

Clark County, NV

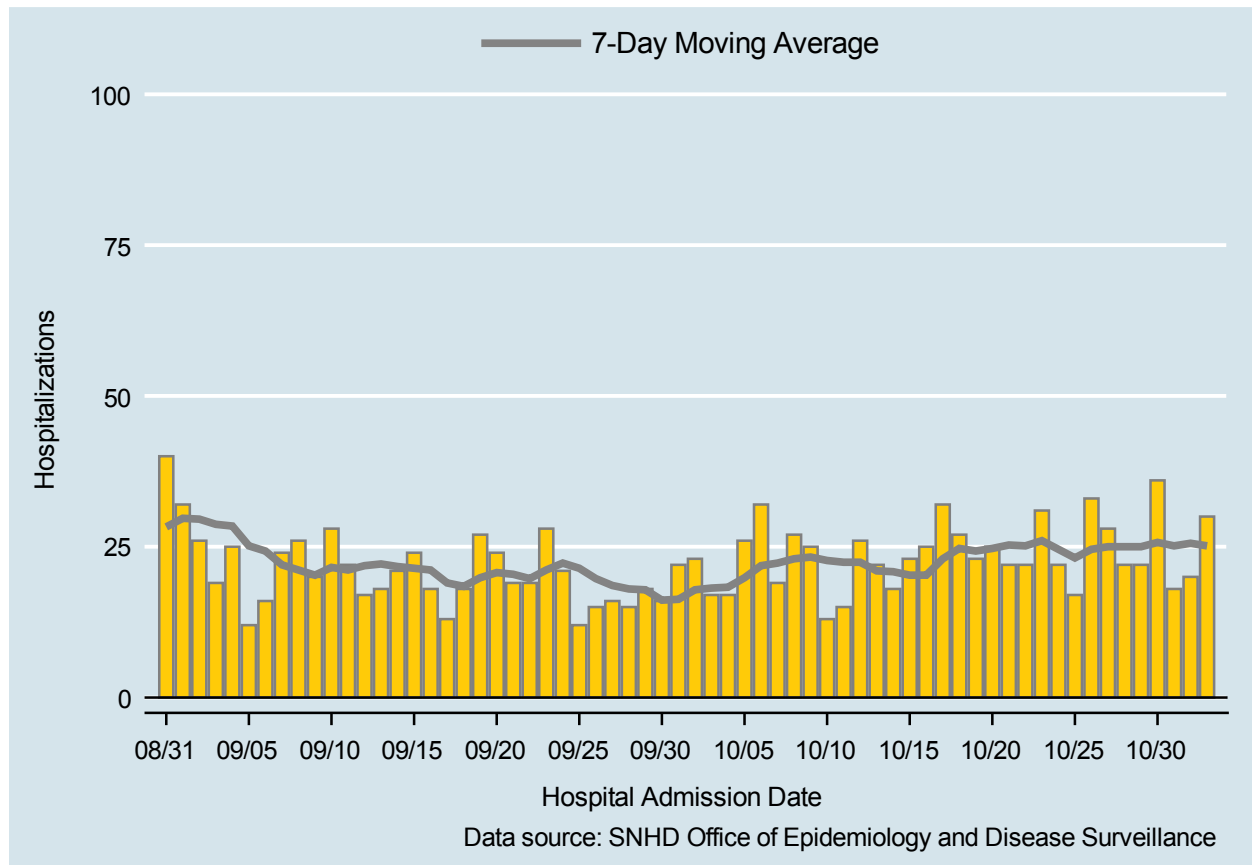


Table 2: COVID-19 Hospitalizations per Day, Clark County, NV

Date	Hospitalizations Per Day	7-Day Moving Average
OCT 20	25	24.7
OCT 21	22	25.3
OCT 22	22	25.1
OCT 23	31	26.0
OCT 24	22	24.6
OCT 25	17	23.1
OCT 26	33	24.6
OCT 27	28	25.0
OCT 28	22	25.0
OCT 29	22	25.0
OCT 30	36	25.7
OCT 31	18	25.1
NOV 01	20	25.6
NOV 02	30	25.1

## COVID-19 Deaths

Clark County, NV

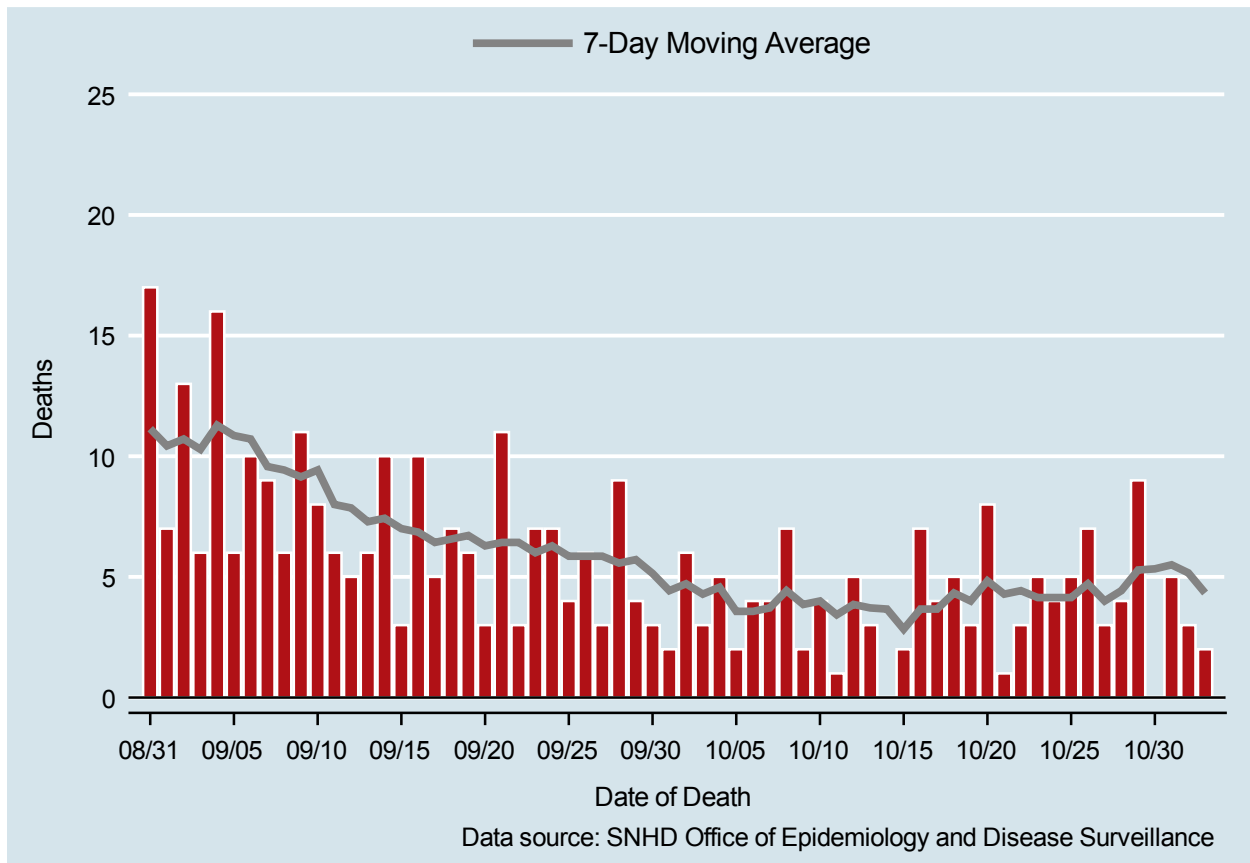


Table 3: COVID-19 Deaths per Day, Clark County, NV

Date	Deaths Per Day	7-Day Moving Average
OCT 20	8	4.8
OCT 21	1	4.3
OCT 22	3	4.4
OCT 23	5	4.1
OCT 24	4	4.1
OCT 25	5	4.1
OCT 26	7	4.7
OCT 27	3	4.0
OCT 28	4	4.4
OCT 29	9	5.3
OCT 30	.	5.3
OCT 31	5	5.5
NOV 01	3	5.2
NOV 02	2	4.3

## 7-Day Average of Daily New Cases per 100K, by Age Group (Years)

Clark County, NV

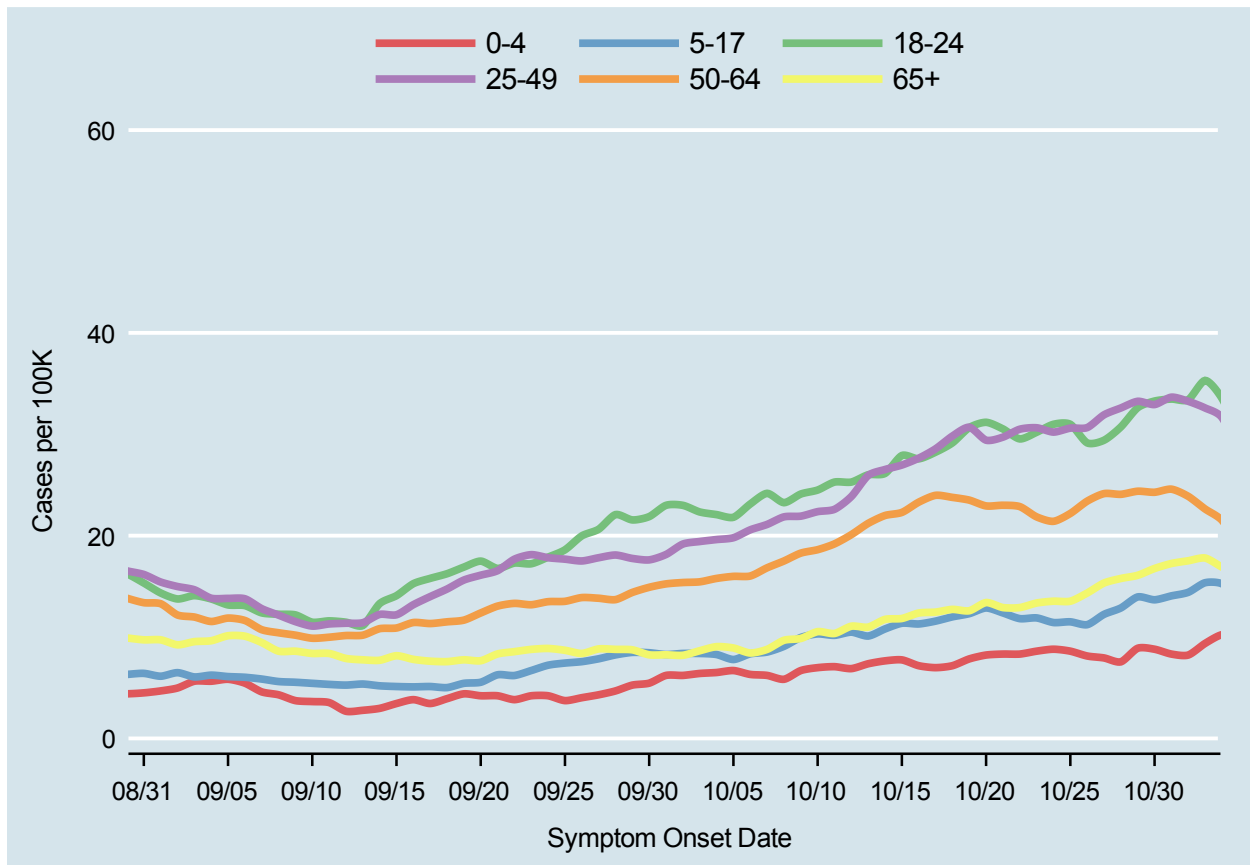
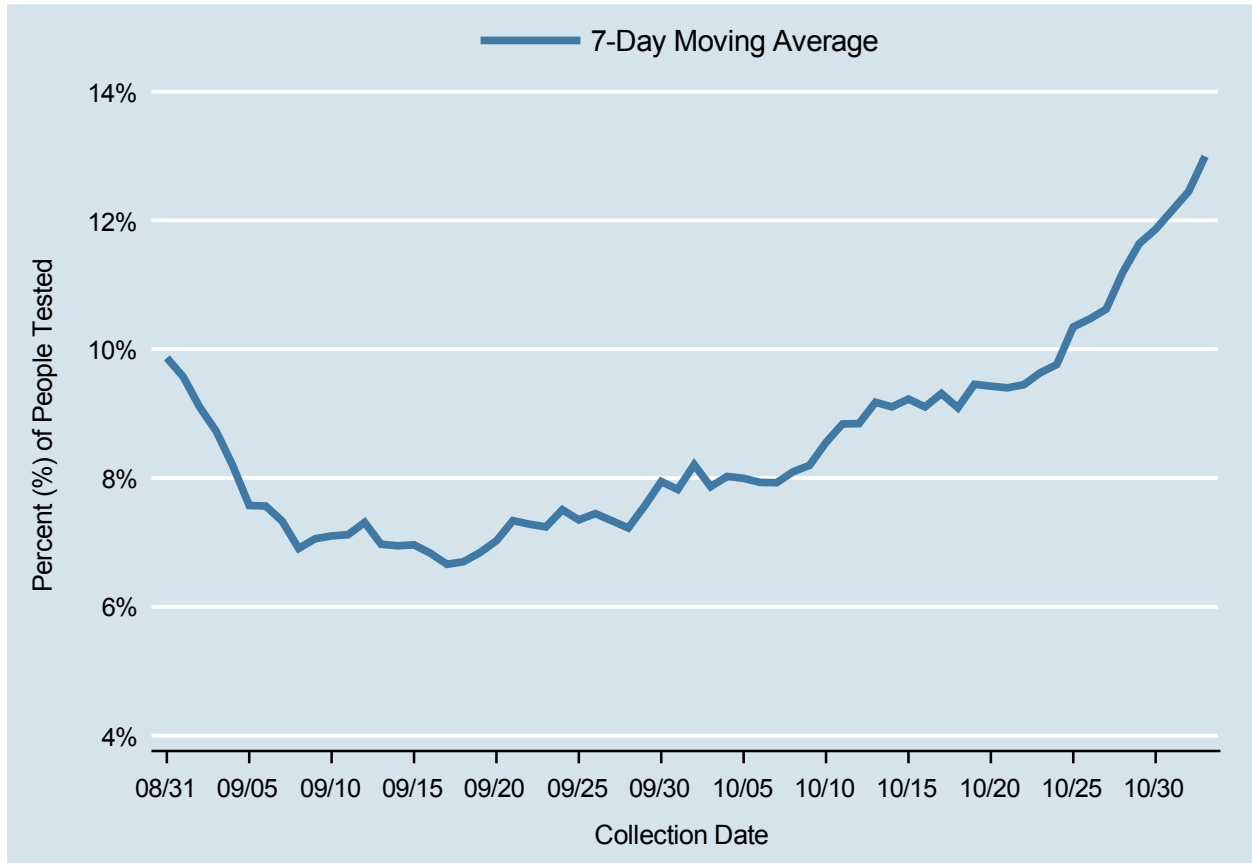


Table 4: 7-Day Average of Daily New Cases per 100K, by Age Group (Years)

Date	0-4	5-17	18-24	25-49	50-64	65+
OCT 20	8.2	12.9	31.2	29.4	22.9	13.4
OCT 21	8.3	12.4	30.5	29.7	23.0	12.9
OCT 22	8.3	11.8	29.5	30.5	22.9	12.9
OCT 23	8.6	11.9	30.2	30.6	21.9	13.4
OCT 24	8.8	11.4	31.0	30.2	21.4	13.5
OCT 25	8.6	11.5	31.0	30.6	22.2	13.5
OCT 26	8.1	11.2	29.1	30.7	23.4	14.3
OCT 27	7.9	12.2	29.4	31.9	24.1	15.3
OCT 28	7.6	12.9	30.7	32.6	24.1	15.8
OCT 29	8.9	14.0	32.6	33.2	24.4	16.1
OCT 30	8.8	13.7	33.3	32.9	24.3	16.8
OCT 31	8.3	14.1	33.5	33.7	24.6	17.3
NOV 01	8.2	14.4	33.4	33.2	23.9	17.5
NOV 02	9.4	15.4	35.3	32.6	22.6	17.8

# Percent of People Receiving COVID-19 Vital Tests Who Have Positive Results

Clark County, NV



*Report prepared by: Kellie Watkins, PhD, MS, Ying Zhang, PhD, MPH, Kathryn Barker, MPH (Office of Epidemiology and Disease Surveillance) and Lei Zhang, MS (Office of Informatics)*