

# COVID-19 Trends

Clark County, Nevada

Document creation date: November 5, 2020

- **General notes:** This report uses surveillance data collected by the Southern Nevada Health District. Due to delays related to laboratory processing, reporting, and case investigations, data from the most recent days are less complete than data from older time points. For this reason, as of June 10, 2020 this report will not display data from the previous three days prior to the date that the report was created. As many case investigations are ongoing, all data presented in this report are considered preliminary and subject to change. Data regarding cases, hospitalizations, deaths, and labs were last updated November 5, 2020 at 12:00 AM, and data is reported up through November 1, 2020.
- **Cases:** Symptom onset date was used for aggregating cases. If symptom onset date was missing, the following dates were substituted in this order: diagnosis date, lab collection date, report date (date case was reported to SNHD), event creation date (date case was entered into TriSano, SNHD's surveillance system).
- **Hospitalizations:** Admission date was used for aggregating hospitalizations. If admission date was missing, report date was substituted. If a person had more than one hospitalization after his/her COVID-19 diagnosis, only the first admission date was used.
- **Deaths:** Date of death was used for aggregating deaths. If date of death was missing, report date was used.
- For the "7-Day Average of Daily New Cases per 100K, by Age Group (Years)" graph and table, the population data source for calculating rate estimates was the "2019 ASRHO Estimates and Projections Summary for 2020, Office of the State Demographer for Nevada." Rates for individual age categories may be based on small numbers, which may give unstable estimates.
- All graphs in this report show data from approximately 60 days prior to the date of the report.
- All tables show data from the last 14 days before the current date, with the exception of the "Percent Change in Weekly Totals from Previous Week", which displays data from the previous eight completed weeks.
- For the "Percent of People Receiving COVID-19 Viral Tests Who Have Positive Results" graph, one person who has multiple specimens collected in one day is only reported once. If any of that person's tests are positive, that person counts as a positive result. If all of that individual's tests are negative, that person counts as a negative result. Laboratory tests were included if they were a test assessing for the presence of SARS-CoV-2 viral RNA, for example PCR tests. Antibody tests were excluded.

## COVID-19 Cases

Clark County, NV

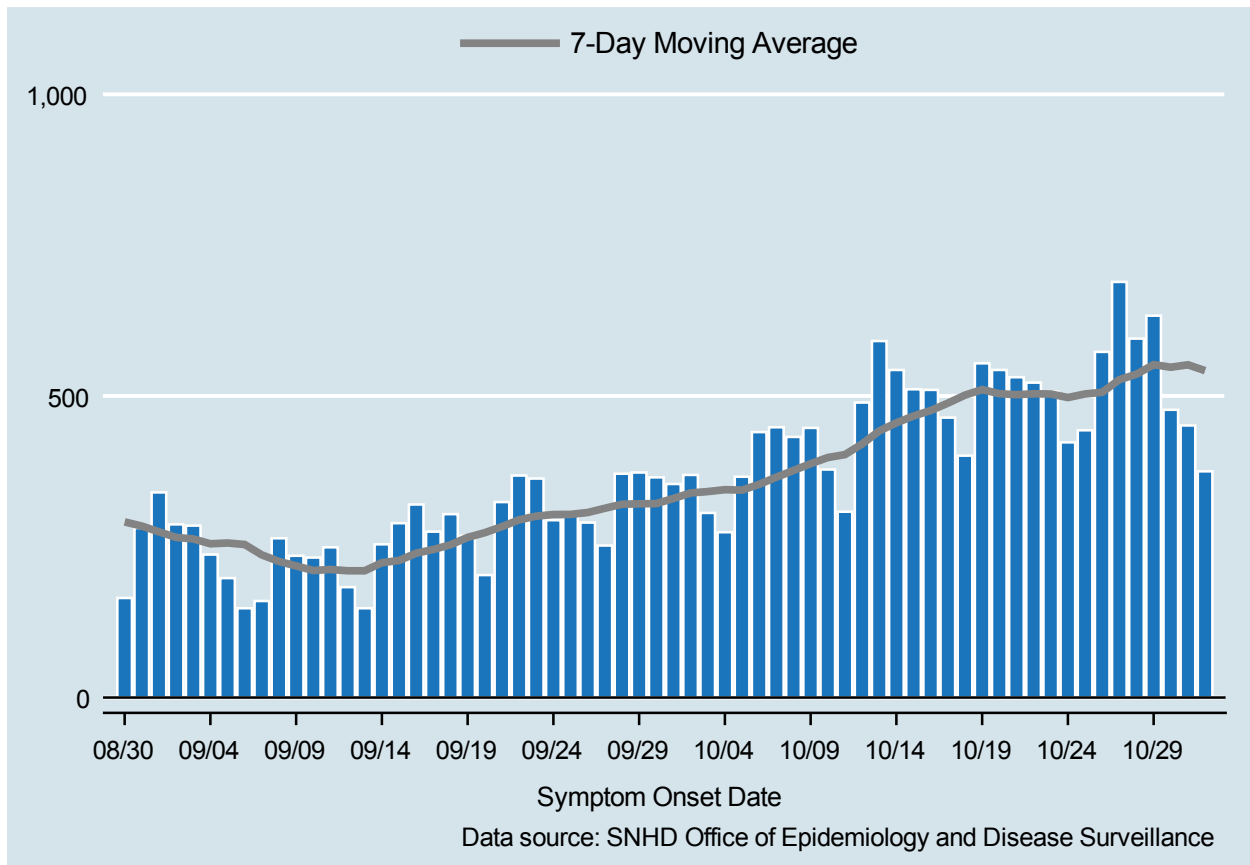


Table 1: COVID-19 Cases per Day, Clark County, NV

Date	Cases Per Day	7-Day Moving Average
OCT 19	554	510.6
OCT 20	543	503.7
OCT 21	531	502.0
OCT 22	522	503.6
OCT 23	507	503.1
OCT 24	423	497.3
OCT 25	443	503.3
OCT 26	573	506.0
OCT 27	689	526.9
OCT 28	595	536.0
OCT 29	633	551.9
OCT 30	477	547.6
OCT 31	451	551.6
NOV 01	375	541.9

# COVID-19 Hospitalizations

Clark County, NV

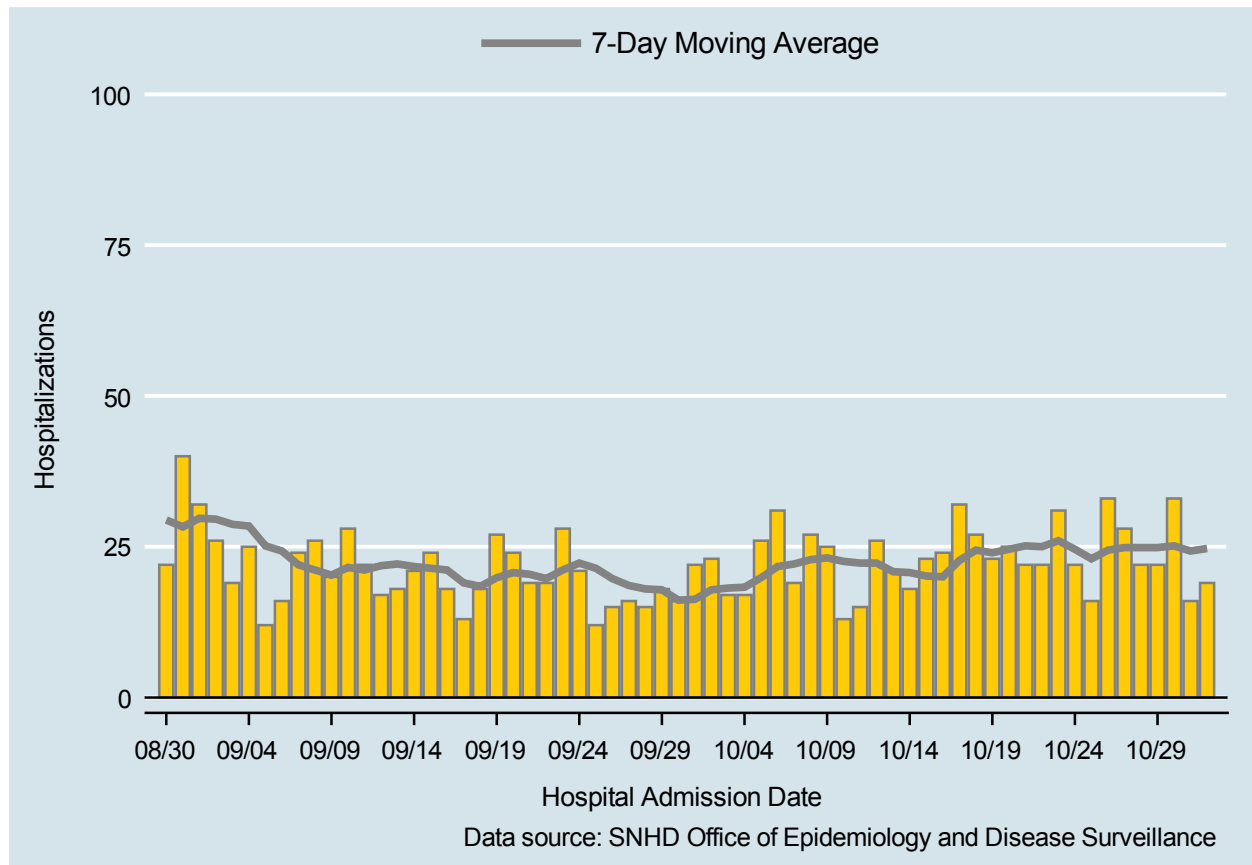


Table 2: COVID-19 Hospitalizations per Day, Clark County, NV

Date	Hospitalizations Per Day	7-Day Moving Average
OCT 19	23	24.0
OCT 20	25	24.6
OCT 21	22	25.1
OCT 22	22	25.0
OCT 23	31	26.0
OCT 24	22	24.6
OCT 25	16	23.0
OCT 26	33	24.4
OCT 27	28	24.9
OCT 28	22	24.9
OCT 29	22	24.9
OCT 30	33	25.1
OCT 31	16	24.3
NOV 01	19	24.7

## COVID-19 Deaths

Clark County, NV

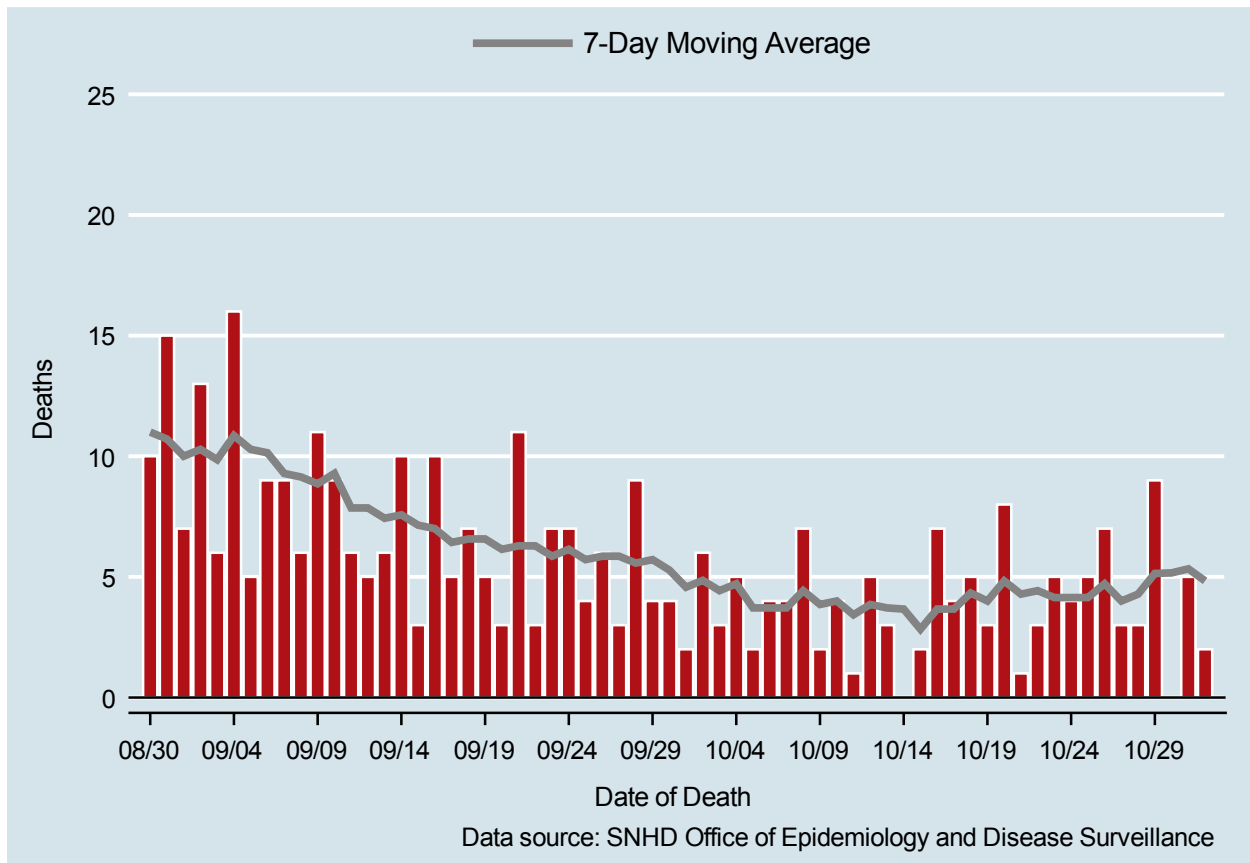


Table 3: COVID-19 Deaths per Day, Clark County, NV

Date	Deaths Per Day	7-Day Moving Average
OCT 19	3	4.0
OCT 20	8	4.8
OCT 21	1	4.3
OCT 22	3	4.4
OCT 23	5	4.1
OCT 24	4	4.1
OCT 25	5	4.1
OCT 26	7	4.7
OCT 27	3	4.0
OCT 28	3	4.3
OCT 29	9	5.1
OCT 30	.	5.2
OCT 31	5	5.3
NOV 01	2	4.8

## 7-Day Average of Daily New Cases per 100K, by Age Group (Years)

Clark County, NV

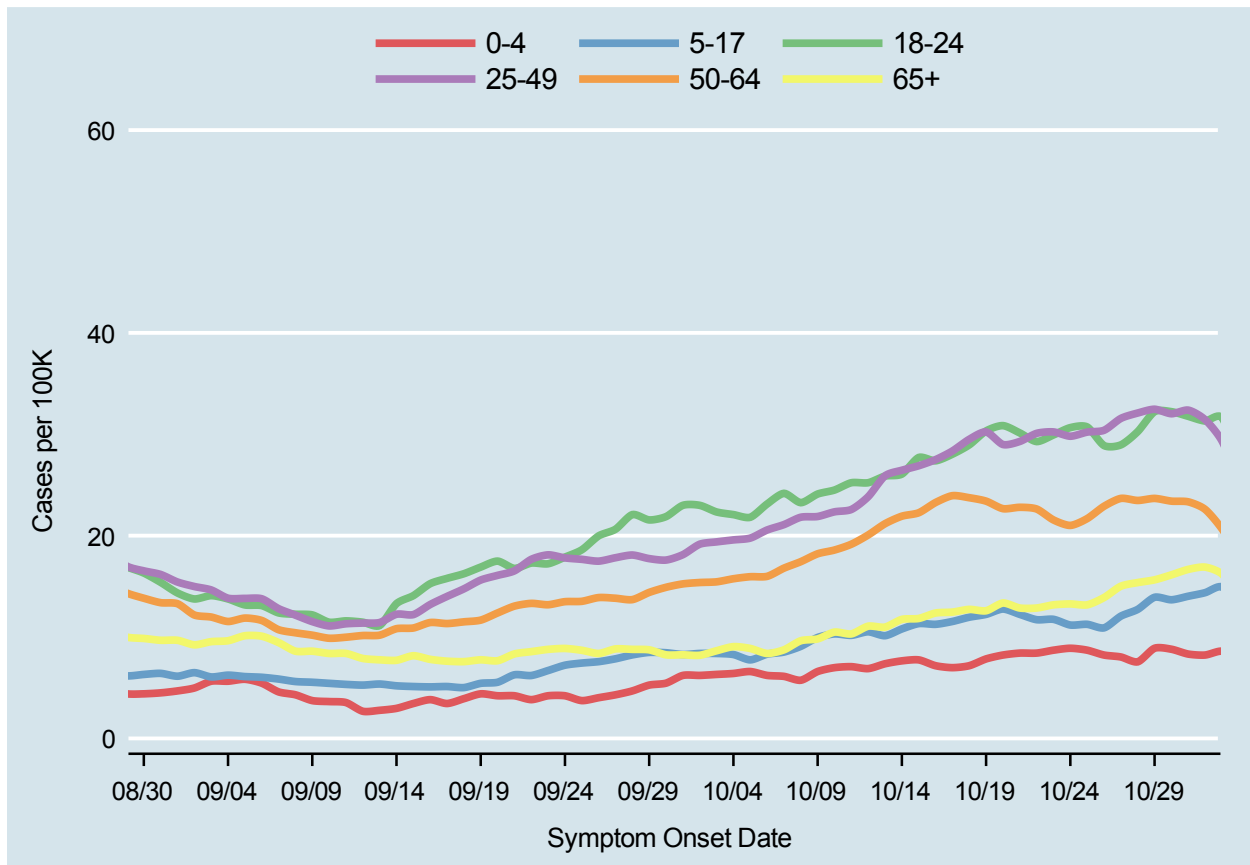
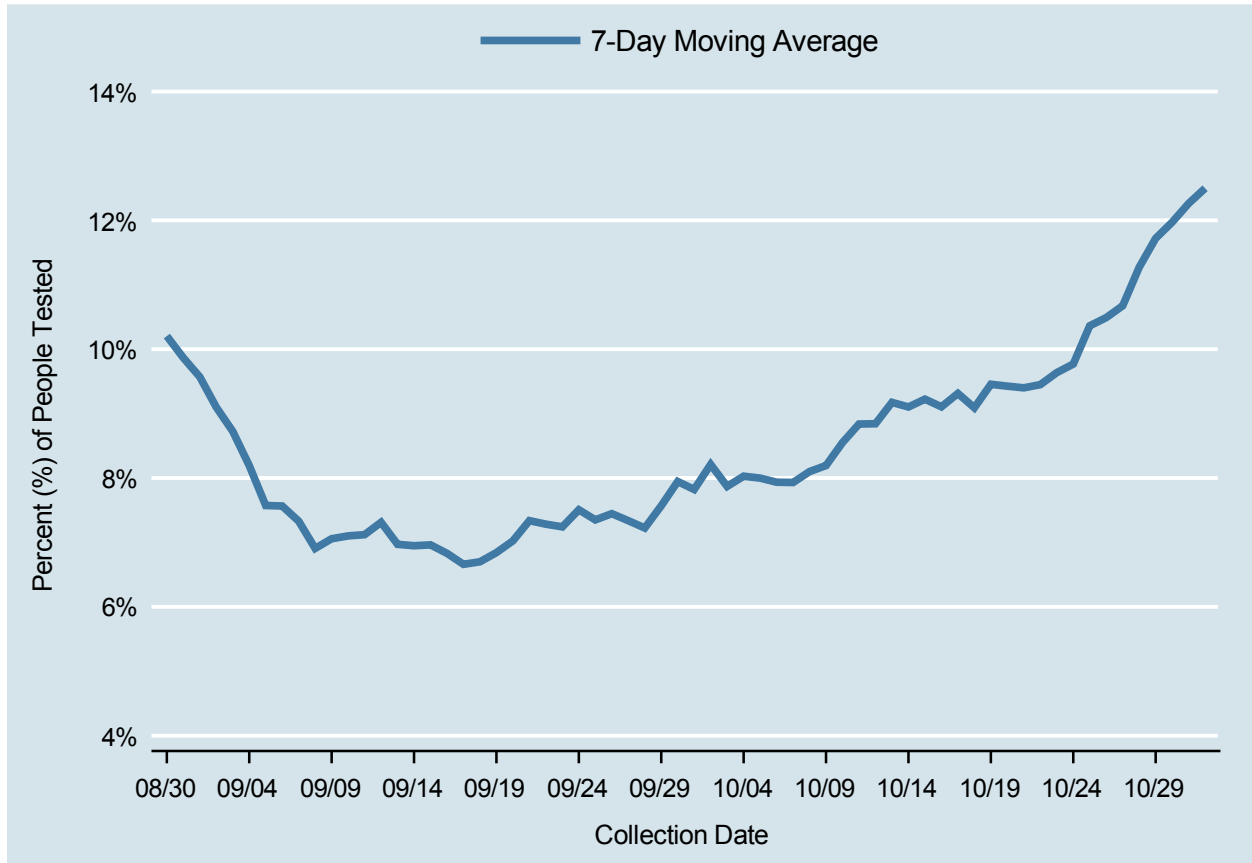


Table 4: 7-Day Average of Daily New Cases per 100K, by Age Group (Years)

Date	0-4	5-17	18-24	25-49	50-64	65+
OCT 19	7.8	12.2	30.3	30.2	23.4	12.6
OCT 20	8.2	12.8	30.9	29.0	22.7	13.4
OCT 21	8.4	12.2	30.1	29.3	22.8	12.9
OCT 22	8.4	11.7	29.3	30.1	22.6	12.9
OCT 23	8.7	11.7	29.9	30.2	21.5	13.2
OCT 24	8.9	11.2	30.7	29.8	21.0	13.3
OCT 25	8.7	11.3	30.7	30.2	21.7	13.2
OCT 26	8.2	10.9	28.9	30.4	22.9	13.9
OCT 27	8.0	12.1	29.0	31.6	23.7	15.0
OCT 28	7.6	12.7	30.3	32.1	23.5	15.4
OCT 29	8.9	13.9	32.2	32.5	23.7	15.6
OCT 30	8.8	13.7	32.2	32.0	23.4	16.1
OCT 31	8.3	14.0	31.8	32.4	23.3	16.7
NOV 01	8.2	14.4	31.3	31.4	22.6	16.9

# Percent of People Receiving COVID-19 Vital Tests Who Have Positive Results

Clark County, NV



*Report prepared by: Kellie Watkins, PhD, MS, Ying Zhang, PhD, MPH, Kathryn Barker, MPH (Office of Epidemiology and Disease Surveillance) and Lei Zhang, MS (Office of Informatics)*