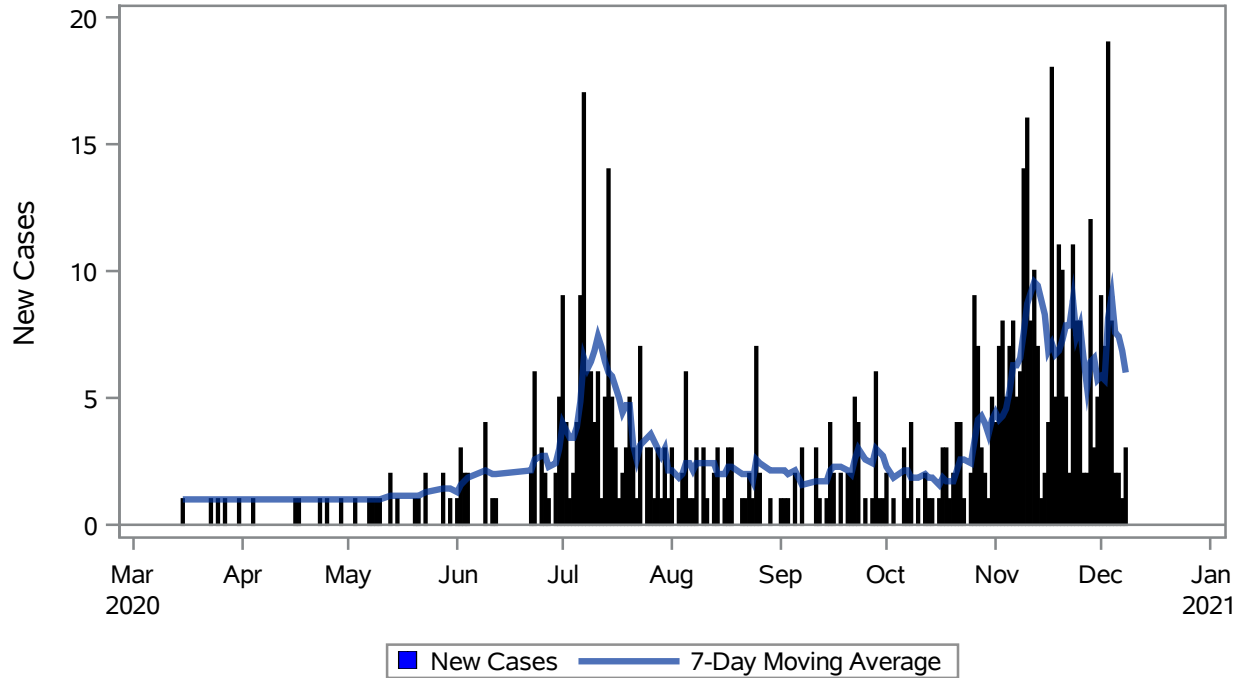


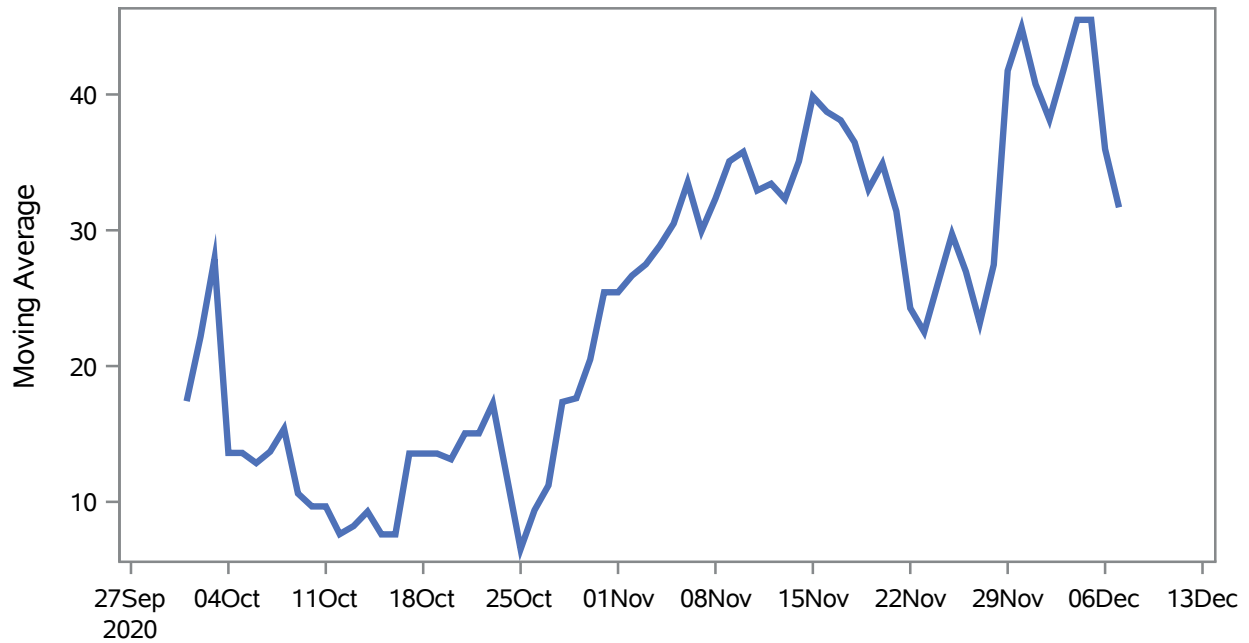
### COVID19 Cases for Mesquite, 7-Day Moving Average



Investigations are ongoing; data are subject to change.  
Reporting through 09DEC2020

Mesquite zip codes include 89027,89034. The U.S. Census Bureau data uses Zip Code Tabulation Area (ZCTA), which does not list 89034 but has incorporated areas of 89034 within 89027 through the American Community Survey (ACS) 5-Year Estimates.

## Percent of People Receiving COVID-19 Viral Tests Who Have Positive Results in Mesquite



Investigations are ongoing; data are subject to change.  
Reporting through 09DEC2020

Mesquite zip codes include 89027,89034. The U.S. Census Bureau data uses Zip Code Tabulation Area (ZCTA), which does not list 89034 but has incorporated areas of 89034 within 89027 through the American Community Survey (ACS) 5-Year Estimates.

**Table 1: Age and COVID19 in Mesquite**

Case Status	Age Categories	N	%	Population	Rate per 100,000
Cases	Aged 4 or less	7	1.2	702	--
	Aged 5 to 17	30	5.0	2,217	1353.2
	Aged 18 to 24	55	9.2	938	5863.5
	Aged 25 to 49	184	30.7	3,386	5434.1
	Aged 50 to 64	138	23.0	3,371	4093.7
	Aged 64+	186	31.0	7,290	2551.4
Hospitalizations	Aged 25 to 49	4	10.5	3,386	--
	Aged 50 to 64	9	23.7	3,371	--
	Aged 64+	25	65.8	7,290	342.94
Deaths	Aged 64+	14	100	7,290	192.04

Note1: Population data source for calculating rate estimates: U.S. Census Bureau, ACS 5-year estimate.

Note2: Rates for categories with fewer than 12 cases are suppressed due to high relative standard error.

Note3: Hospitalizations are regardless of deceased status; Deaths are regardless of hospitalization status

**Investigations are ongoing; data are subject to change.**

**Reporting through 09DEC2020**

**Mesquite zip codes include 89027,89034. The U.S. Census Bureau data uses Zip Code Tabulation Area (ZCTA), which does not list 89034 but has incorporated areas of 89034 within 89027 through the American Community Survey (ACS) 5-Year Estimates.**

**Table 2: Race/Ethnicity and COVID19 in Mesquite**

Case Status	Race Ethnicity Categories	N	%	Population	Rate per 100,000
Cases	Hispanic	226	37.7	3,738	6046.0
	White	246	41.0	13,120	1875.0
	Black	--	--	148	--
	Asian	--	--	486	--
	American Indian/Alaskan Native	--	--	95	--
	Multi-race	--	--	240	--
	Native Hawaiian/Pacific Islander	--	--	30	--
	Unknown	113	18.8	.	.
Hospitalizations	Hispanic	13	34.2	3,738	347.78
	White	21	55.3	13,120	160.06
	Multi-race	--	--	240	--
	Native Hawaiian/Pacific Islander	--	--	30	--
	Unknown	--	--	.	.
Deaths	Hispanic	1	7.1	3,738	--
	White	12	85.7	13,120	91.46
	Unknown	--	--	.	.

Note1: Population data source for calculating rate estimates: U.S. Census Bureau, ACS 5-year estimate.

Note2: Rates for categories with fewer than 12 cases are suppressed due to high relative standard error. Counts for categories with population less than 500 are suppressed for confidentiality.

Note3: Due to suppression, the total counts per case status may not equal expected totals.

Note4: Hospitalizations are regardless of deceased status; Deaths are regardless of hospitalization status

**Investigations are ongoing; data are subject to change.**

**Reporting through 09DEC2020**

**Mesquite zip codes include 89027,89034. The U.S. Census Bureau data uses Zip Code Tabulation Area (ZCTA), which does not list 89034 but has incorporated areas of 89034 within 89027 through the American Community Survey (ACS) 5-Year Estimates.**

**Table 3: Birth Sex and COVID19 in Mesquite**

Case Status	Birth Sex Categories	N	%	Population	Rate per 100,000
Cases	Female	332	55.3	9,111	3643.9
	Male	265	44.2	8,793	3013.8
	Unknown	3	0.5	.	.
Hospitalizations	Female	22	57.9	9,111	241.47
	Male	16	42.1	8,793	181.96
Deaths	Female	4	28.6	9,111	--
	Male	10	71.4	8,793	--

Note1: Population data source for calculating rate estimates: U.S. Census Bureau, ACS 5-year estimate.

Note2: Rates for categories with fewer than 12 cases are suppressed due to high relative standard error. Counts for categories with population less than 500 are suppressed for confidentiality.

Note3: Hospitalizations are regardless of deceased status; Deaths are regardless of hospitalization status

**Investigations are ongoing; data are subject to change.**

**Reporting through 09DEC2020**

**Mesquite zip codes include 89027,89034. The U.S. Census Bureau data uses Zip Code Tabulation Area (ZCTA), which does not list 89034 but has incorporated areas of 89034 within 89027 through the American Community Survey (ACS) 5-Year Estimates.**