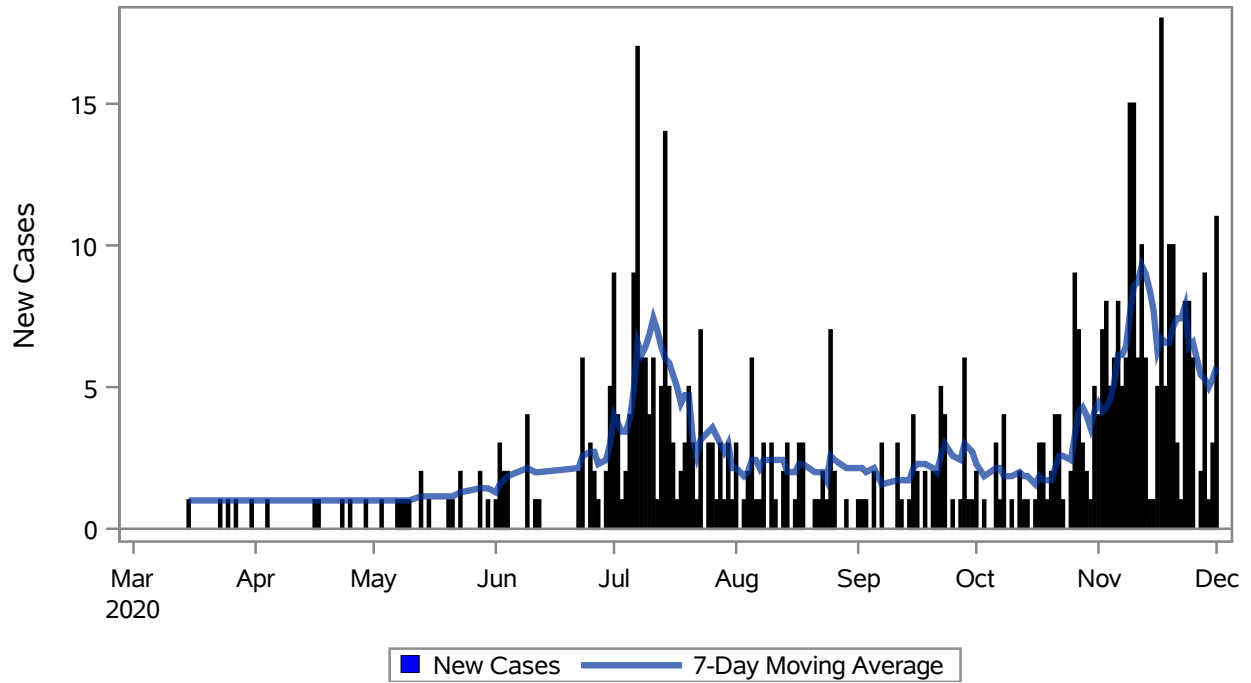


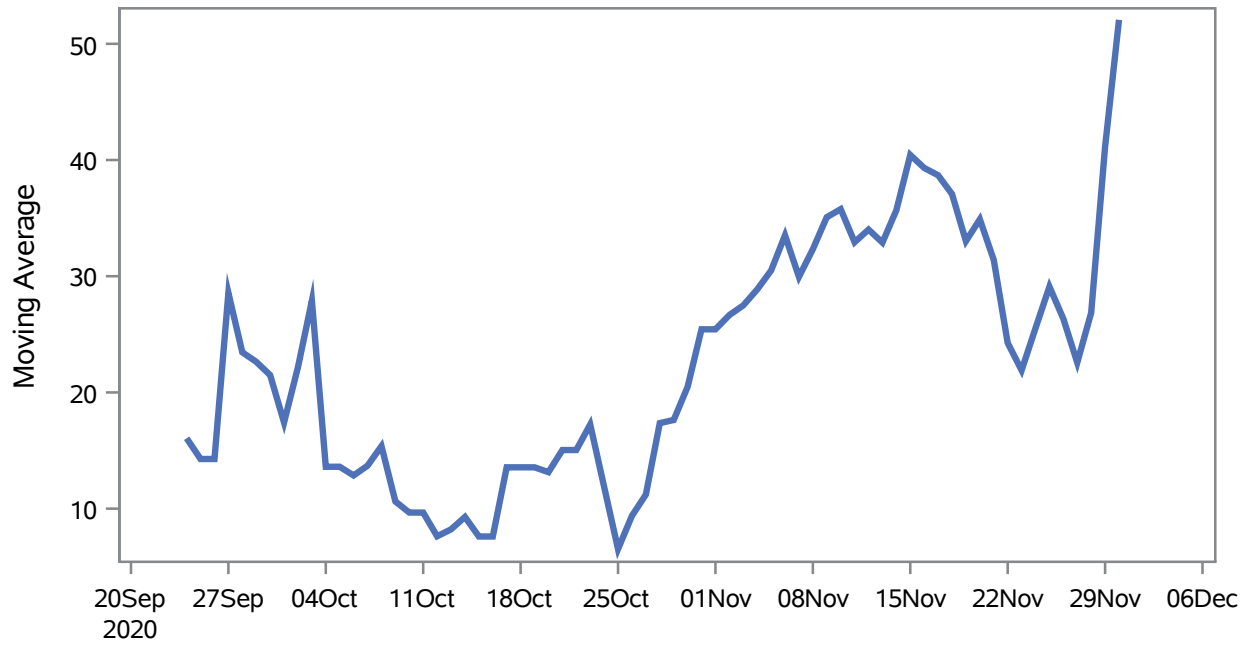
### COVID19 Cases for Mesquite, 7-Day Moving Average



Investigations are ongoing; data are subject to change.  
Reporting through 02DEC2020

Mesquite zip codes include 89027,89034. The U.S. Census Bureau data uses Zip Code Tabulation Area (ZCTA), which does not list 89034 but has incorporated areas of 89034 within 89027 through the American Community Survey (ACS) 5-Year Estimates.

### Percent of People Receiving COVID-19 Viral Tests Who Have Positive Results in Mesquite



Investigations are ongoing; data are subject to change.  
Reporting through 02DEC2020

Mesquite zip codes include 89027,89034. The U.S. Census Bureau data uses Zip Code Tabulation Area (ZCTA), which does not list 89034 but has incorporated areas of 89034 within 89027 through the American Community Survey (ACS) 5-Year Estimates.

**Table 1: Age and COVID19 in Mesquite**

Case Status	Age Categories	N	%	Population	Rate per 100,000
Cases	Aged 4 or less	6	1.1	702	--
	Aged 5 to 17	28	5.2	2,217	1263.0
	Aged 18 to 24	47	8.7	938	5010.7
	Aged 25 to 49	168	31.1	3,386	4961.6
	Aged 50 to 64	128	23.7	3,371	3797.1
	Aged 64+	164	30.3	7,290	2249.7
Hospitalizations	Aged 25 to 49	4	11.8	3,386	--
	Aged 50 to 64	9	26.5	3,371	--
	Aged 64+	21	61.8	7,290	288.07
Deaths	Aged 64+	11	100	7,290	--

Note1: Population data source for calculating rate estimates: U.S. Census Bureau, ACS 5-year estimate.

Note2: Rates for categories with fewer than 12 cases are suppressed due to high relative standard error.

Note3: Hospitalizations are regardless of deceased status; Deaths are regardless of hospitalization status

**Investigations are ongoing; data are subject to change.**

**Reporting through 02DEC2020**

**Mesquite zip codes include 89027,89034. The U.S. Census Bureau data uses Zip Code Tabulation Area (ZCTA), which does not list 89034 but has incorporated areas of 89034 within 89027 through the American Community Survey (ACS) 5-Year Estimates.**

**Table 2: Race/Ethnicity and COVID19 in Mesquite**

Case Status	Race Ethnicity Categories	N	%	Population	Rate per 100,000
Cases	Hispanic	210	38.8	3,738	5618.0
	White	224	41.4	13,120	1707.3
	Black	--	--	148	--
	Asian	--	--	486	--
	American Indian/Alaskan Native	--	--	95	--
	Multi-race	--	--	240	--
	Native Hawaiian/Pacific Islander	--	--	30	--
	Unknown	95	17.6	.	.
Hospitalizations	Hispanic	13	38.2	3,738	347.78
	White	17	50.0	13,120	129.57
	Multi-race	--	--	240	--
	Native Hawaiian/Pacific Islander	--	--	30	--
	Unknown	--	--	.	.
Deaths	Hispanic	1	9.1	3,738	--
	White	9	81.8	13,120	--
	Unknown	--	--	.	.

Note1: Population data source for calculating rate estimates: U.S. Census Bureau, ACS 5-year estimate.

Note2: Rates for categories with fewer than 12 cases are suppressed due to high relative standard error. Counts for categories with population less than 500 are suppressed for confidentiality.

Note3: Due to suppression, the total counts per case status may not equal expected totals.

Note4: Hospitalizations are regardless of deceased status; Deaths are regardless of hospitalization status

**Investigations are ongoing; data are subject to change.**

**Reporting through 02DEC2020**

**Mesquite zip codes include 89027,89034. The U.S. Census Bureau data uses Zip Code Tabulation Area (ZCTA), which does not list 89034 but has incorporated areas of 89034 within 89027 through the American Community Survey (ACS) 5-Year Estimates.**

**Table 3: Birth Sex and COVID19 in Mesquite**

Case Status	Birth Sex Categories	N	%	Population	Rate per 100,000
Cases	Female	300	55.5	9,111	3292.7
	Male	237	43.8	8,793	2695.3
	Unknown	4	0.7	.	.
Hospitalizations	Female	20	58.8	9,111	219.51
	Male	14	41.2	8,793	159.22
Deaths	Female	2	18.2	9,111	--
	Male	8	72.7	8,793	--
	Unknown	1	9.1	.	.

Note1: Population data source for calculating rate estimates: U.S. Census Bureau, ACS 5-year estimate.

Note2: Rates for categories with fewer than 12 cases are suppressed due to high relative standard error. Counts for categories with population less than 500 are suppressed for confidentiality.

Note3: Hospitalizations are regardless of deceased status; Deaths are regardless of hospitalization status

**Investigations are ongoing; data are subject to change.**

**Reporting through 02DEC2020**

**Mesquite zip codes include 89027,89034. The U.S. Census Bureau data uses Zip Code Tabulation Area (ZCTA), which does not list 89034 but has incorporated areas of 89034 within 89027 through the American Community Survey (ACS) 5-Year Estimates.**