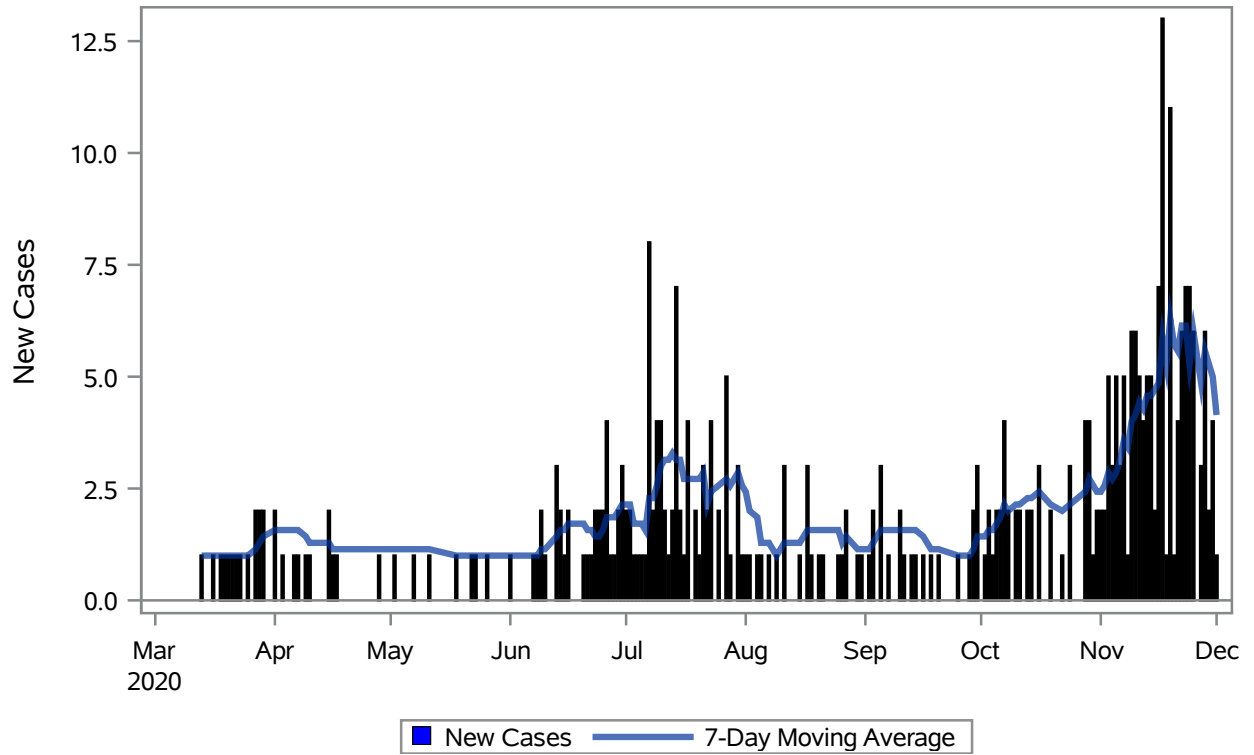
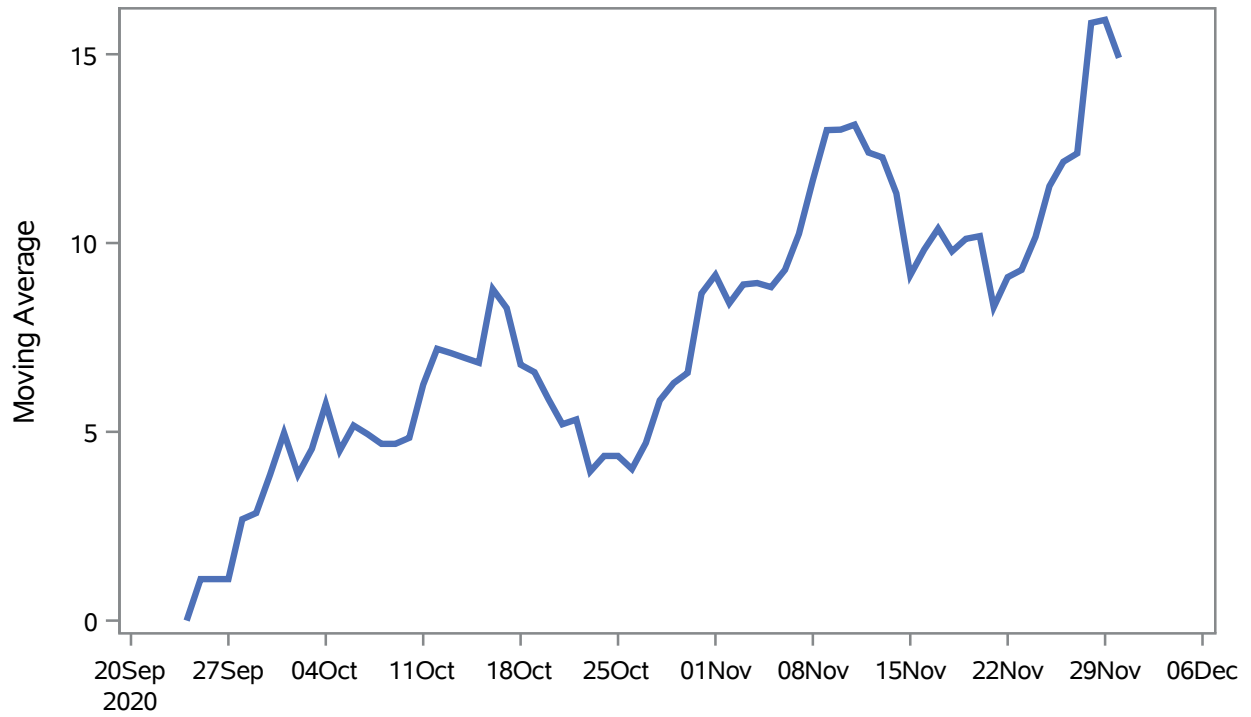


COVID19 Cases for Boulder City, 7-Day Moving Average



Investigations are ongoing; data are subject to change.
Reporting through 02DEC2020
Boulder City zip codes include 89005.

Percent of People Receiving COVID-19 Viral Tests Who Have Positive Results in Boulder City



Investigations are ongoing; data are subject to change.

Reporting through 02DEC2020

Boulder City zip codes include 89005.

Table 1: Age and COVID19 in Boulder City

Case Status	Age Categories	N	%	Population	Rate per 100,000
Cases	Aged 4 or less	6	1.7	659	--
	Aged 5 to 17	16	4.5	2,123	753.65
	Aged 18 to 24	33	9.2	921	3583.1
	Aged 25 to 49	127	35.5	3,509	3619.3
	Aged 50 to 64	84	23.5	3,701	2269.7
	Aged 64+	92	25.7	4,767	1929.9
Hospitalizations	Aged 50 to 64	9	30.0	3,701	--
	Aged 64+	21	70.0	4,767	440.53
Deaths	Aged 50 to 64	1	8.3	3,701	--
	Aged 64+	11	91.7	4,767	--

Note1: Population data source for calculating rate estimates: U.S. Census Bureau, ACS 5-year estimate.

Note2: Rates for categories with fewer than 12 cases are suppressed due to high relative standard error.

Note3: Hospitalizations are regardless of deceased status; Deaths are regardless of hospitalization status

**Investigations are ongoing; data are subject to change.
Reporting through 02DEC2020
Boulder City zip codes include 89005.**

Table 2: Race/Ethnicity and COVID19 in Boulder City

Case Status	Race Ethnicity Categories	N	%	Population	Rate per 100,000
Cases	Hispanic	29	8.1	1,164	2491.4
	White	228	63.7	13,569	1680.3
	Black	--	--	51	--
	Asian	--	--	199	--
	American Indian/Alaskan Native	--	--	140	--
	Unknown	94	26.3	.	.
Hospitalizations	Hispanic	1	3.3	1,164	--
	White	23	76.7	13,569	169.50
	Unknown	6	20.0	.	.
Deaths	White	11	91.7	13,569	--
	Unknown	1	8.3	.	.

Note1: Population data source for calculating rate estimates: U.S. Census Bureau, ACS 5-year estimate.

Note2: Rates for categories with fewer than 12 cases are suppressed due to high relative standard error. Counts for categories with population less than 500 are suppressed for confidentiality.

Note3: Due to suppression, the total counts per case status may not equal expected totals.

Note4: Hospitalizations are regardless of deceased status; Deaths are regardless of hospitalization status

**Investigations are ongoing; data are subject to change.
Reporting through 02DEC2020
Boulder City zip codes include 89005.**