

# COVID-19 Trends

Clark County, Nevada

Document creation date: December 27, 2020

- General notes: This report uses surveillance data collected by the Southern Nevada Health District. Due to delays related to laboratory processing, reporting, and case investigations, data from the most recent days are less complete than data from older time points. For this reason, as of June 10, 2020 this report will not display data from the previous three days prior to the date that the report was created. As many case investigations are ongoing, all data presented in this report are considered preliminary and subject to change. Data regarding cases, hospitalizations, deaths, and labs were last updated December 27, 2020 at 12:00 AM, and data is reported up through December 23, 2020.
- Cases: Symptom onset date was used for aggregating cases. If symptom onset date was missing, the following dates were substituted in this order: diagnosis date, lab collection date, report date (date case was reported to SNHD), event creation date (date case was entered into TriSano, SNHD's surveillance system).
- Hospitalizations: Admission date was used for aggregating hospitalizations. If admission date was missing, report date was substituted. If a person had more than one hospitalization after his/her COVID-19 diagnosis, only the first admission date was used.
- Deaths: Date of death was used for aggregating deaths. If date of death was missing, report date was used.
- For the "7-Day Average of Daily New Cases per 100K, by Age Group (Years)" graph and table, the population data source for calculating rate estimates was the "2019 ASRHO Estimates and Projections Summary for 2020, Office of the State Demographer for Nevada." Rates for individual age categories may be based on small numbers, which may give unstable estimates.
- All graphs in this report show data from approximately 60 days prior to the date of the report.
- All tables show data from the last 14 days before the current date, with the exception of the "Percent Change in Weekly Totals from Previous Week", which displays data from the previous eight completed weeks.
- For the "Percent of People Receiving COVID-19 Viral Tests Who Have Positive Results" graph, one person who has multiple specimens collected in one day is only reported once. If any of that person's tests are positive, that person counts as a positive result. If all of that individual's tests are negative, that person counts as a negative result. Laboratory tests were included if they were a test assessing for the presence of SARS-CoV-2 viral RNA, for example PCR tests. Antibody tests were excluded.

# COVID-19 Cases

Clark County, NV

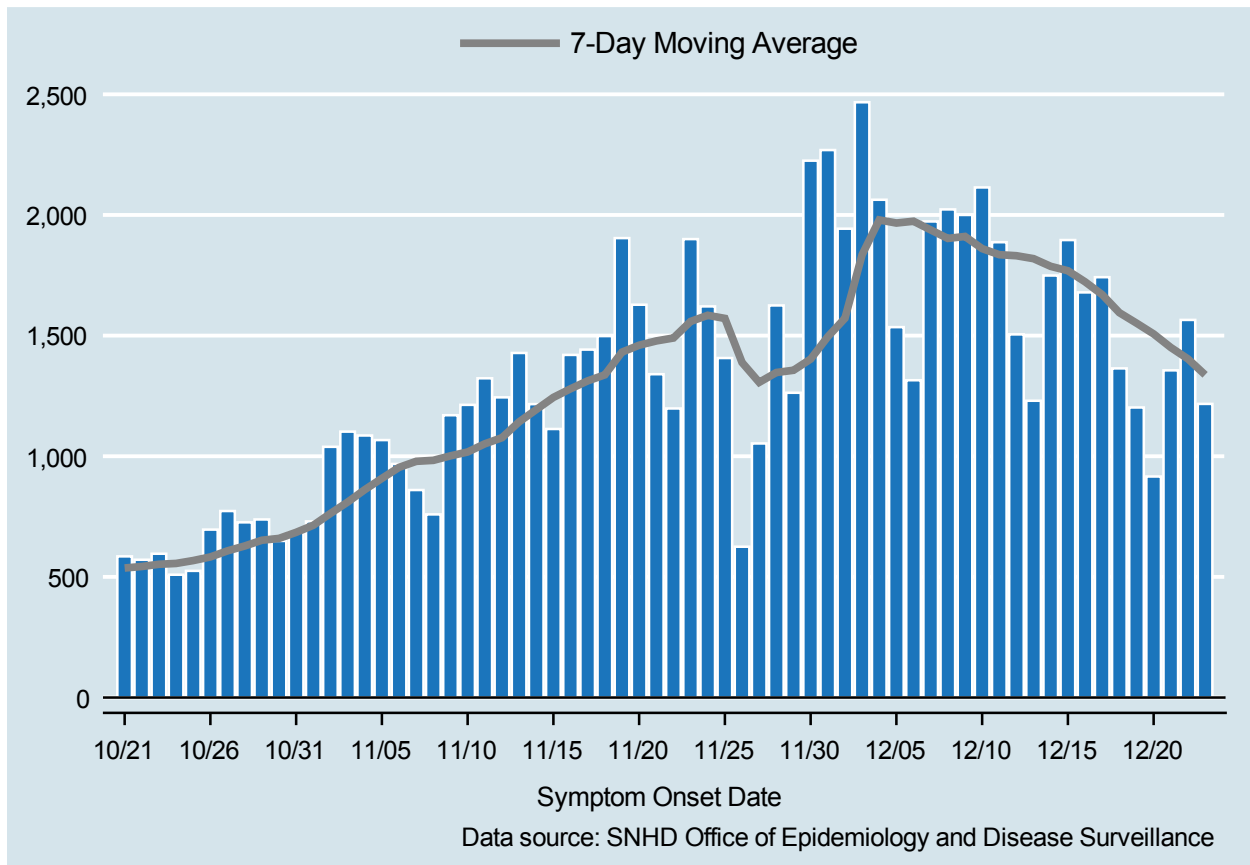


Table 1: COVID-19 Cases per Day, Clark County, NV

Date	Cases Per Day	7-Day Moving Average
DEC 10	2,114	1,860.4
DEC 11	1,887	1,835.3
DEC 12	1,505	1,831.0
DEC 13	1,230	1,818.9
DEC 14	1,749	1,786.9
DEC 15	1,896	1,768.7
DEC 16	1,679	1,722.9
DEC 17	1,742	1,669.7
DEC 18	1,364	1,595.0
DEC 19	1,202	1,551.7
DEC 20	916	1,506.9
DEC 21	1,356	1,450.7
DEC 22	1,565	1,403.4
DEC 23	1,217	1,337.4

# COVID-19 Hospitalizations

Clark County, NV

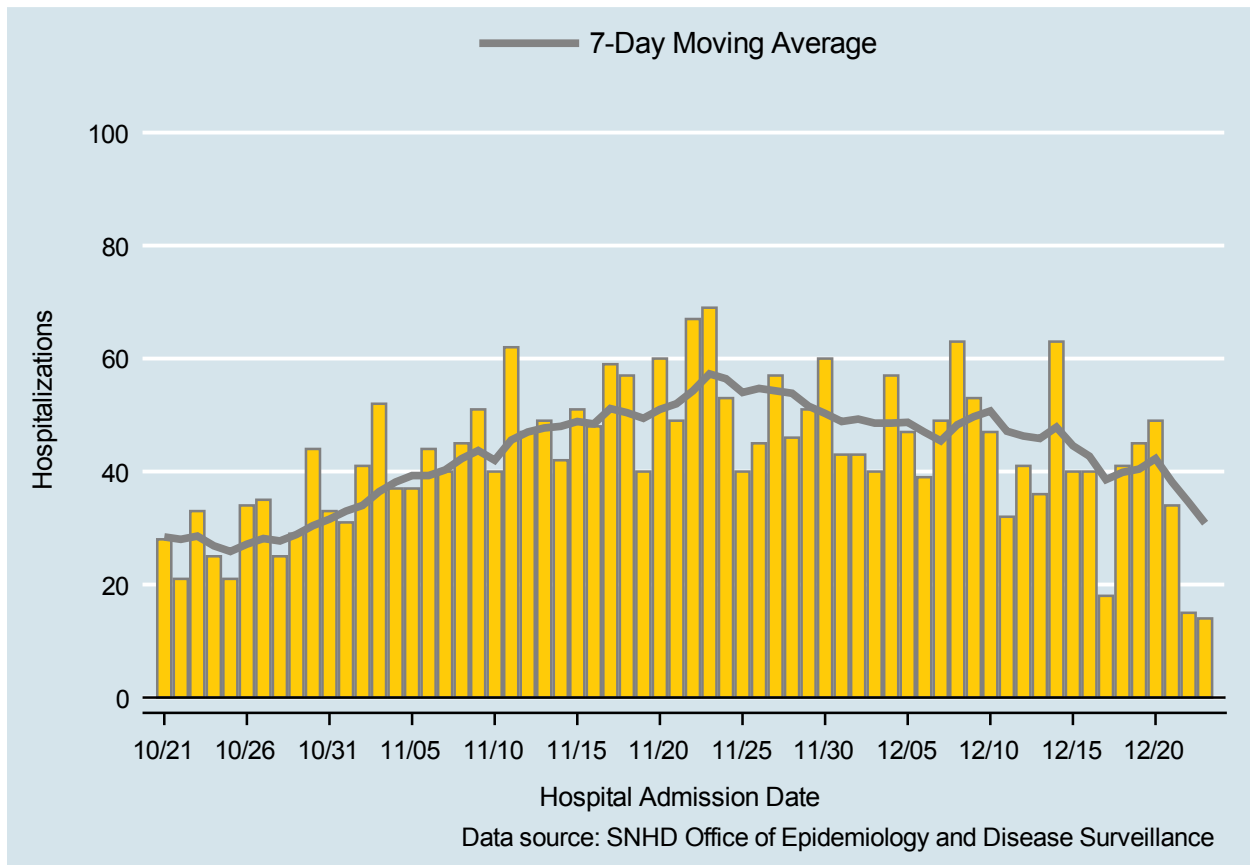


Table 2: COVID-19 Hospitalizations per Day, Clark County, NV

Date	Hospitalizations Per Day	7-Day Moving Average
DEC 10	47	50.7
DEC 11	32	47.1
DEC 12	41	46.3
DEC 13	36	45.9
DEC 14	63	47.9
DEC 15	40	44.6
DEC 16	40	42.7
DEC 17	18	38.6
DEC 18	41	39.9
DEC 19	45	40.4
DEC 20	49	42.3
DEC 21	34	38.1
DEC 22	15	34.6
DEC 23	14	30.9

# COVID-19 Deaths

Clark County, NV

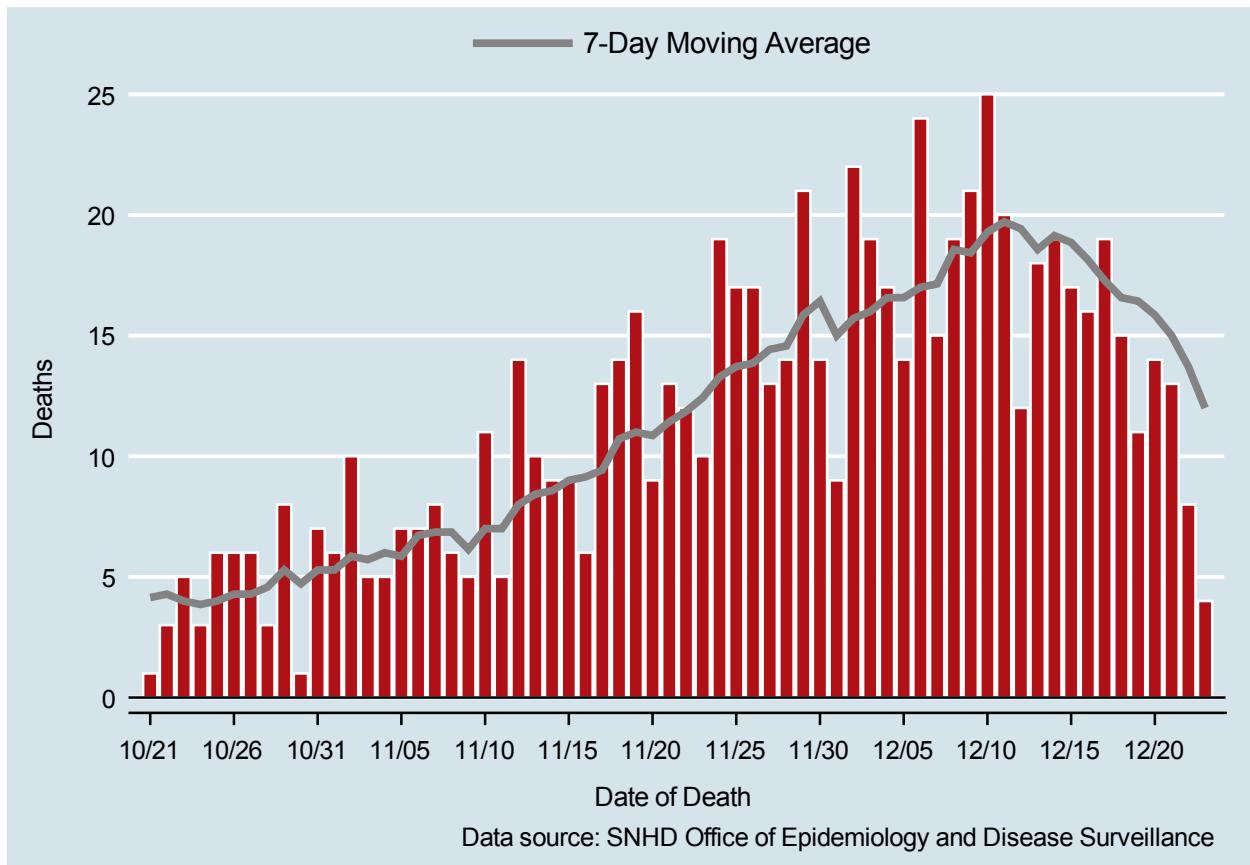


Table 3: COVID-19 Deaths per Day, Clark County, NV

Date	Deaths Per Day	7-Day Moving Average
DEC 10	25	19.3
DEC 11	20	19.7
DEC 12	12	19.4
DEC 13	18	18.6
DEC 14	19	19.1
DEC 15	17	18.9
DEC 16	16	18.1
DEC 17	19	17.3
DEC 18	15	16.6
DEC 19	11	16.4
DEC 20	14	15.9
DEC 21	13	15.0
DEC 22	8	13.7
DEC 23	4	12.0

## 7-Day Average of Daily New Cases per 100K, by Age Group (Years)

Clark County, NV

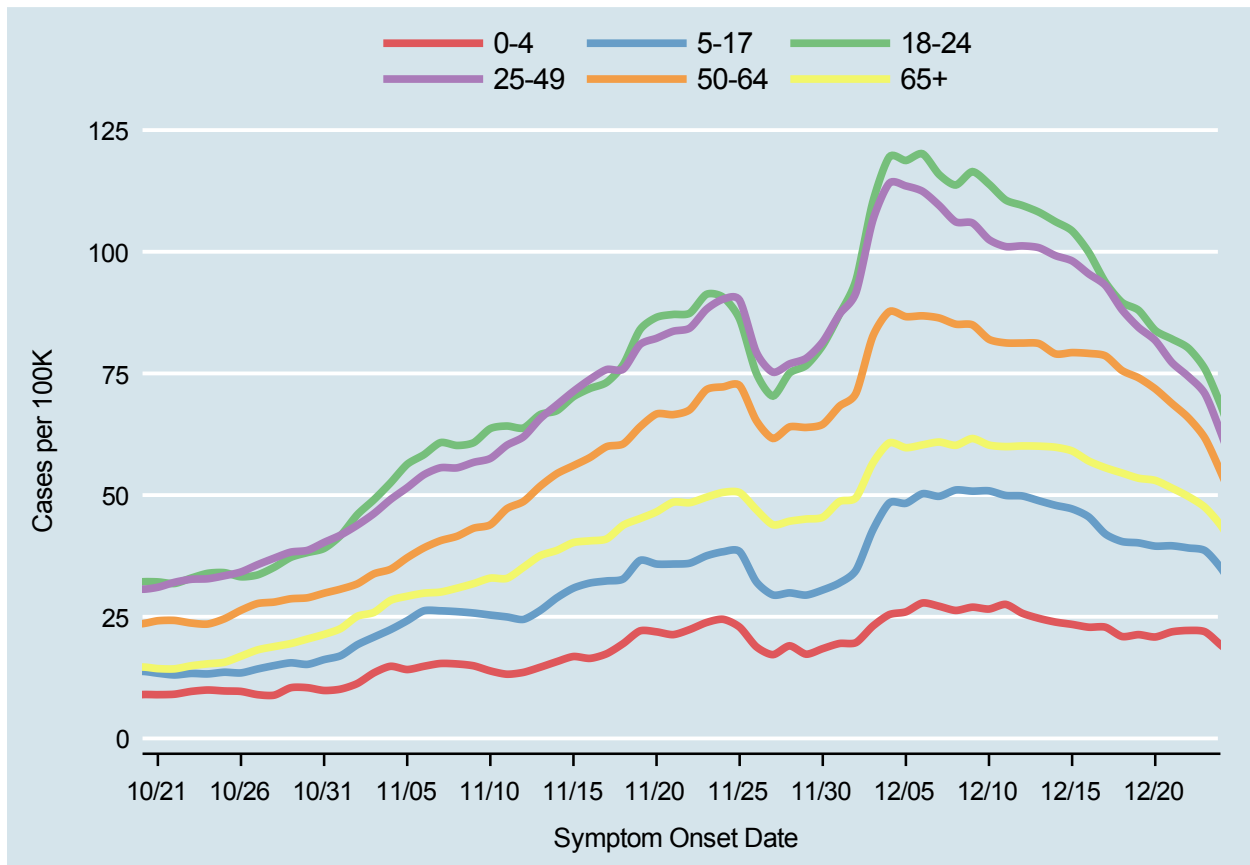
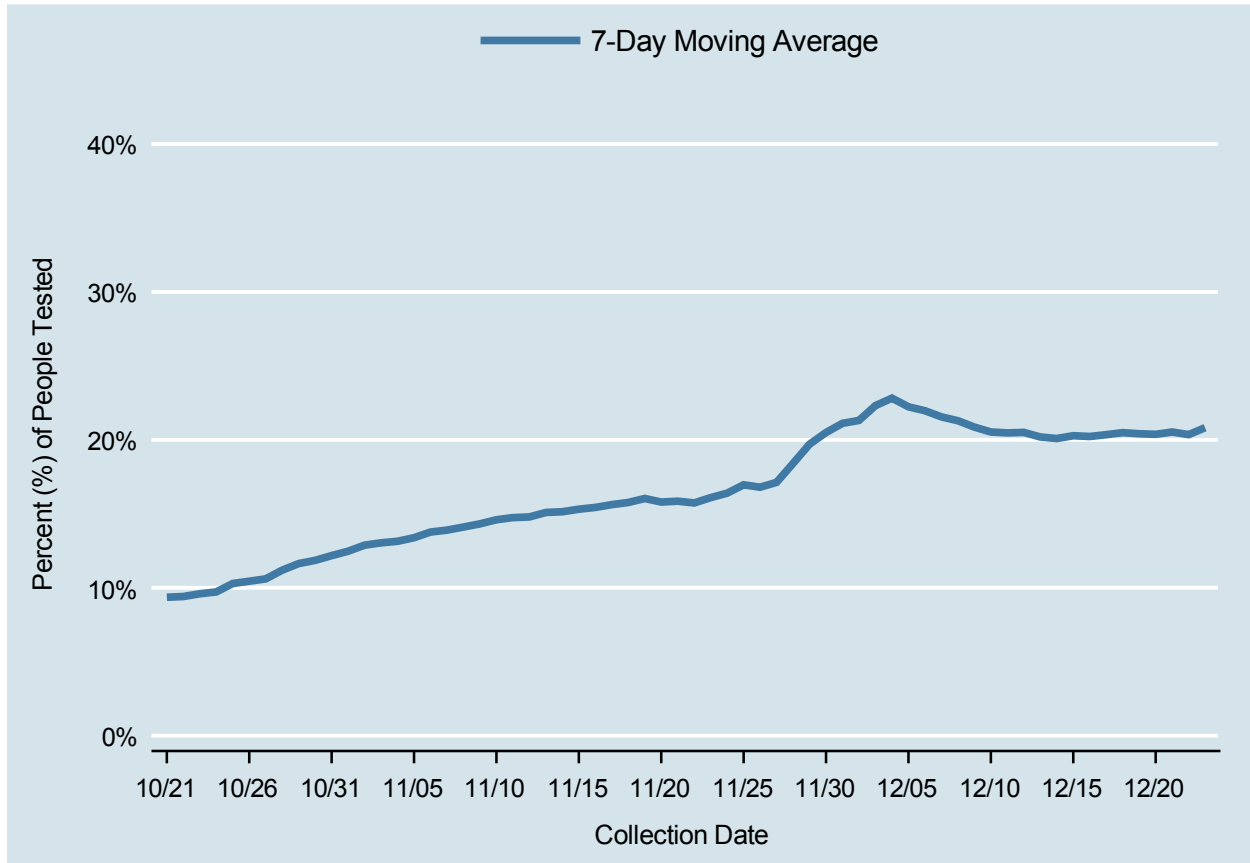


Table 4: 7-Day Average of Daily New Cases per 100K, by Age Group (Years)

Date	0-4	5-17	18-24	25-49	50-64	65+
DEC 10	26.6	50.9	113.9	102.5	82.0	60.3
DEC 11	27.5	49.9	110.6	101.1	81.3	60.0
DEC 12	25.7	49.8	109.5	101.2	81.2	60.1
DEC 13	24.7	48.8	108.1	100.8	81.1	60.1
DEC 14	23.9	47.9	106.2	99.2	79.0	59.8
DEC 15	23.4	47.2	104.3	98.1	79.3	59.1
DEC 16	22.9	45.5	99.9	95.5	79.1	57.0
DEC 17	22.9	42.0	93.7	93.1	78.6	55.6
DEC 18	20.9	40.5	89.6	88.1	75.6	54.5
DEC 19	21.3	40.2	88.0	84.4	74.1	53.5
DEC 20	20.8	39.5	83.8	81.8	71.8	53.0
DEC 21	21.9	39.6	82.1	77.3	68.8	51.4
DEC 22	22.2	39.1	80.2	74.3	65.9	49.7
DEC 23	21.9	38.6	75.9	70.8	61.6	47.5

# Percent of People Receiving COVID-19 Viral Tests Who Have Positive Results

Clark County, NV



*Report prepared by: Kellie Watkins, PhD, MS, Ying Zhang, PhD, MPH, Kathryn Barker, MPH (Office of Epidemiology and Disease Surveillance) and Lei Zhang, MS (Office of Informatics)*