

## COVID-19 Trends

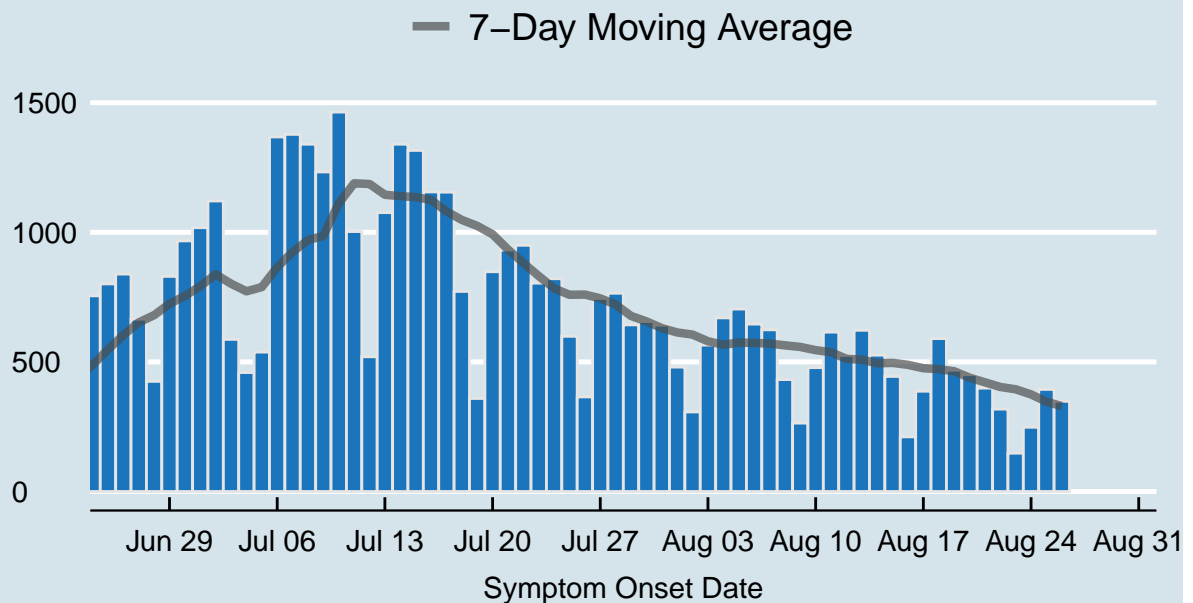
Clark County, Nevada

Document creation date: August 30, 2020

- General notes: This report uses surveillance data collected by the Southern Nevada Health District. Due to delays related to laboratory processing, reporting, and case investigations, data from the most recent days are less complete than data from older time points. For this reason, as of June 10, 2020 this report will not display data from the previous three days prior to the date that the report was created. As many case investigations are ongoing, all data presented in this report are considered preliminary and subject to change. Data regarding cases, hospitalizations, deaths, and labs were last updated August 30 at 12:00 AM, and data is reported up through August 26, 2020.
- Cases: Symptom onset date was used for aggregating cases. If symptom onset date was missing, the following dates were substituted in this order: diagnosis date, lab collection date, report date (date case was reported to SNHD), event creation date (date case was entered into TriSano, SNHD's surveillance system).
- Hospitalizations: Admission date was used for aggregating hospitalizations. If admission date was missing, report date was substituted. If a person had more than one hospitalization after his/her COVID-19 diagnosis, only the first admission date was used.
- Deaths: Date of death was used for aggregating deaths. If date of death was missing, report date was used.
- For the "7-Day Average of Daily New Cases per 100K, by Age Group (Years)" graph and table, the population data source for calculating rate estimates was the "2019 ASRHO Estimates and Projections Summary for 2020, Office of the State Demographer for Nevada." Rates for individual age categories may be based on small numbers, which may give unstable estimates.
- All graphs in this report show data from approximately 60 days prior to the date of the report.
- All tables show data from the last 14 days before the current date.
- For the "Percent of People Receiving COVID-19 Viral Tests Who Have Positive Results" graph, one person who has multiple specimens collected in one day is only reported once. If any of that person's tests are positive, that person counts as a positive result. If all of that individual's tests are negative, that person counts as a negative result. Laboratory tests were included if they were a test assessing for the presence of SARS-CoV-2 viral RNA, for example PCR tests. Antibody tests were excluded.

## COVID-19 Cases

Clark County, NV



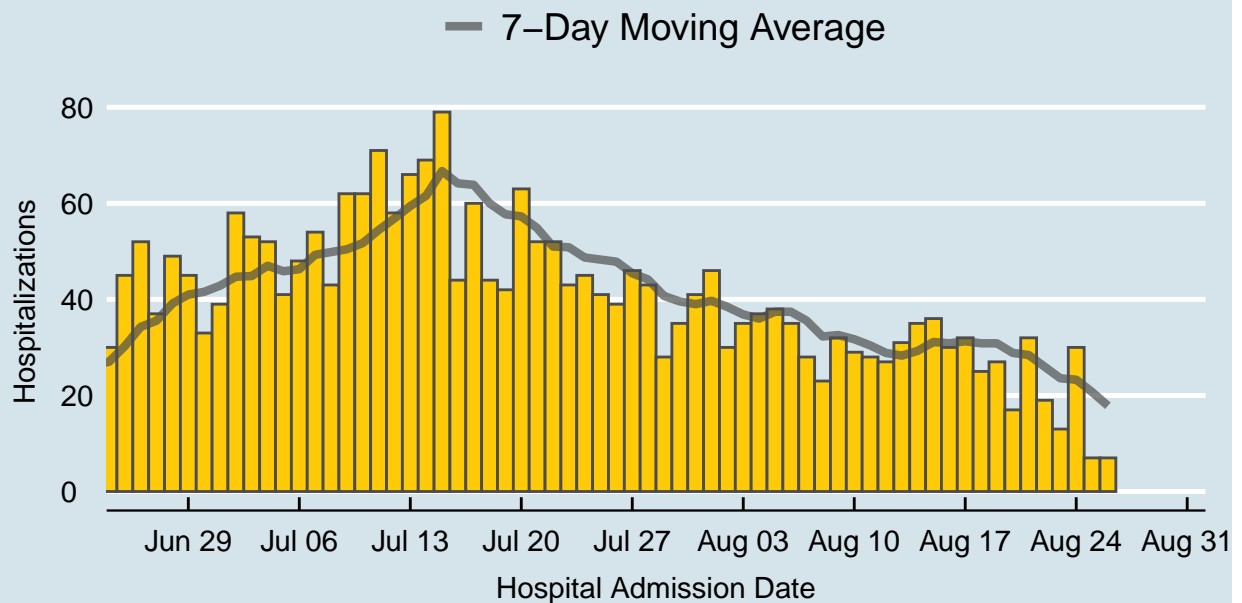
Data source: SNHD Office of Epidemiology and Disease Surveillance

Table 1: COVID-19 Cases per Day, Clark County, NV

Date	Cases per Day	7-Day Moving Average
Aug 13	622	508.6
Aug 14	526	494.6
Aug 15	444	496.3
Aug 16	211	488.7
Aug 17	387	475.7
Aug 18	590	472.1
Aug 19	468	464.0
Aug 20	451	439.6
Aug 21	399	421.4
Aug 22	318	403.4
Aug 23	148	394.4
Aug 24	248	374.6
Aug 25	394	346.6
Aug 26	348	329.4

## COVID-19 Hospitalizations

Clark County, NV



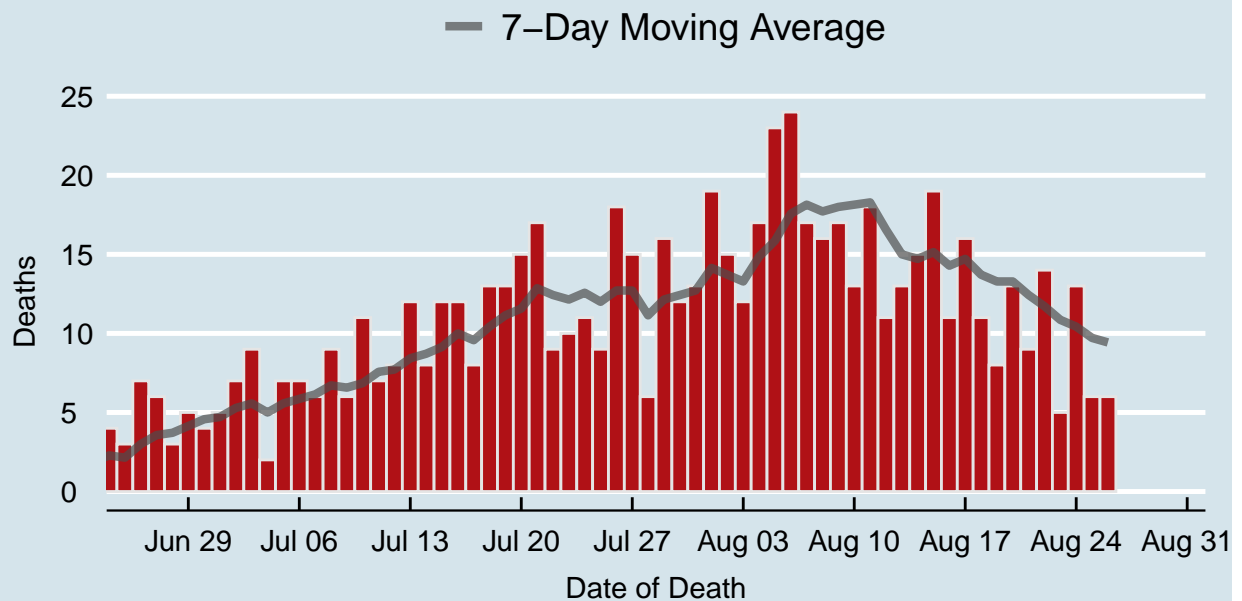
Data source: SNHD Office of Epidemiology and Disease Surveillance

Table 2: COVID-19 Hospitalizations per Day, Clark County, NV

Date	Hospitalizations per Day	7-Day Moving Average
Aug 13	31	28.3
Aug 14	35	29.3
Aug 15	36	31.1
Aug 16	30	30.9
Aug 17	32	31.3
Aug 18	25	30.9
Aug 19	27	30.9
Aug 20	17	28.9
Aug 21	32	28.4
Aug 22	19	26.0
Aug 23	13	23.6
Aug 24	30	23.3
Aug 25	7	20.7
Aug 26	7	17.9

## COVID-19 Deaths

Clark County, NV



Data source: SNHD Office of Epidemiology and Disease Surveillance

Table 3: COVID-19 Deaths per Day, Clark County, NV

Date	Deaths per Day	7-Day Moving Average
Aug 13	13	15.0
Aug 14	15	14.7
Aug 15	19	15.1
Aug 16	11	14.3
Aug 17	16	14.7
Aug 18	11	13.7
Aug 19	8	13.3
Aug 20	13	13.3
Aug 21	9	12.4
Aug 22	14	11.7
Aug 23	5	10.9
Aug 24	13	10.4
Aug 25	6	9.7
Aug 26	6	9.4

## 7-Day Average of Daily New Cases per 100K, by Age Group (Years)

Clark County, NV

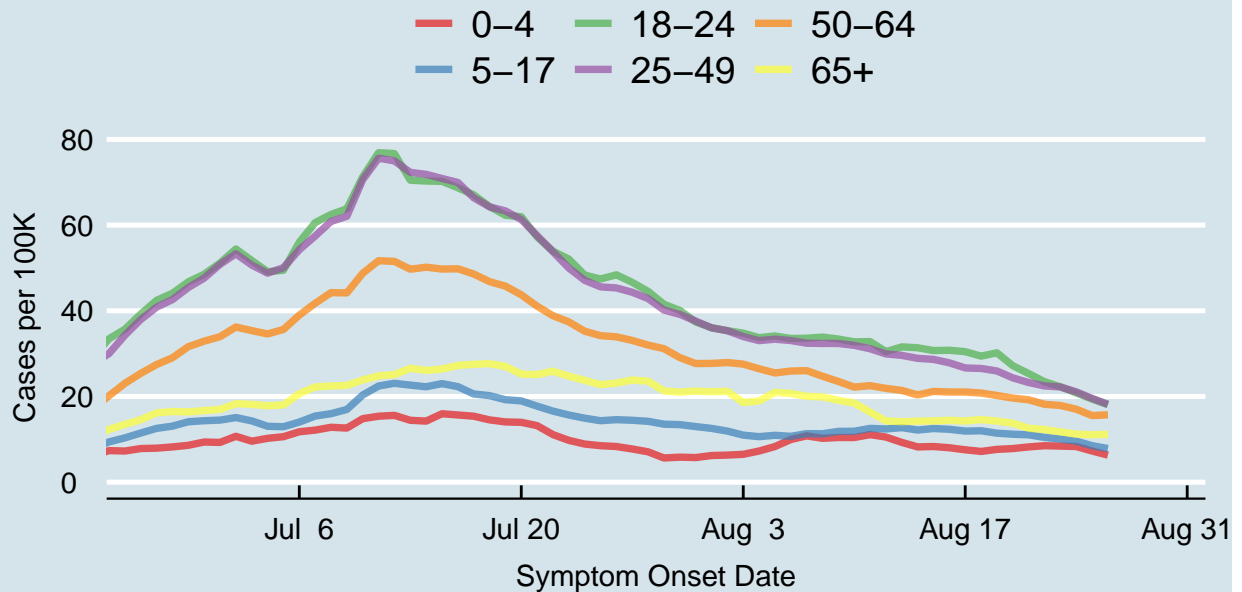
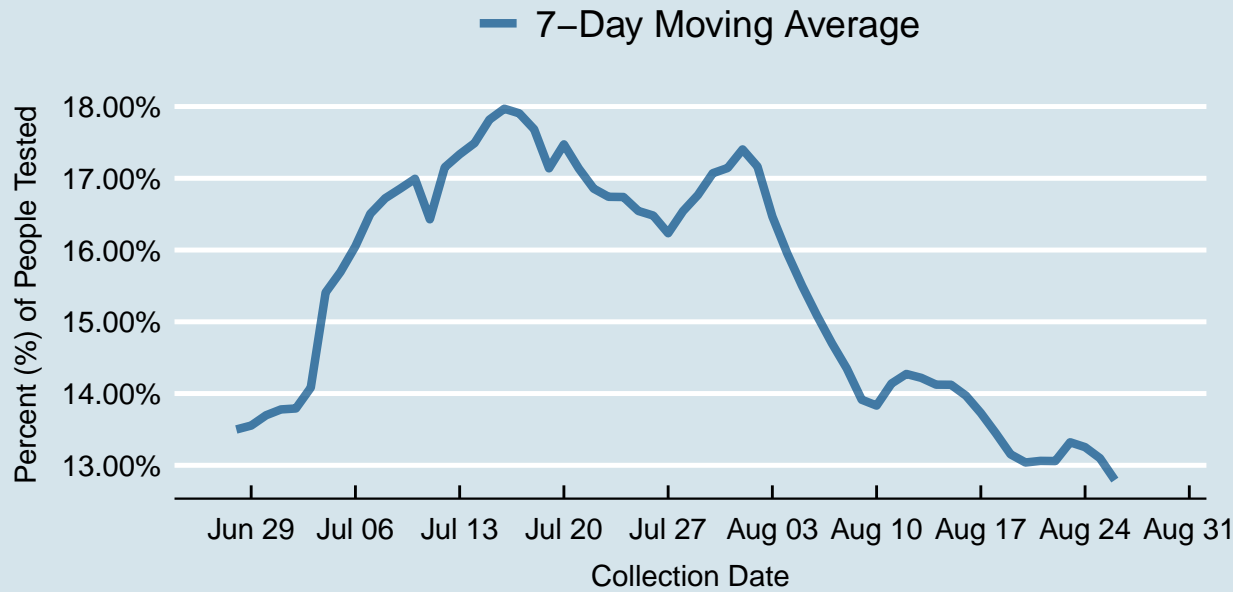


Table 4: 7-Day Average of Daily New Cases per 100K, by Age Group (Years)

Symptom Onset Date	0-4	5-17	18-24	25-49	50-64	65+
Aug 13	9.3	12.7	31.6	29.6	21.4	14.1
Aug 14	8.2	12.2	31.4	28.9	20.4	14.3
Aug 15	8.3	12.5	30.7	28.7	21.2	14.3
Aug 16	8.0	12.3	30.8	27.9	21.0	14.4
Aug 17	7.6	11.9	30.5	26.7	21.0	14.3
Aug 18	7.2	12.0	29.4	26.5	20.8	14.6
Aug 19	7.7	11.4	30.2	26.0	20.2	14.3
Aug 20	7.8	11.2	27.2	24.3	19.6	13.8
Aug 21	8.2	11.0	25.3	23.3	19.2	12.6
Aug 22	8.5	10.4	23.4	22.5	18.2	12.3
Aug 23	8.4	10.1	22.3	22.2	17.9	11.7
Aug 24	8.3	9.6	20.8	21.1	17.0	11.2
Aug 25	7.3	8.5	19.4	19.6	15.5	11.1
Aug 26	6.3	7.9	18.1	18.2	15.7	11.2

## Percent of People Receiving COVID-19 Viral Tests Who Have Positive Results

Clark County, NV





*Report prepared by: Kellie Watkins, PhD, MS, Ying Zhang, PhD, MPH (Office of Epidemiology and Disease Surveillance) and Lei Zhang, MS (Office of Informatics)*