

# COVID-19 Trends

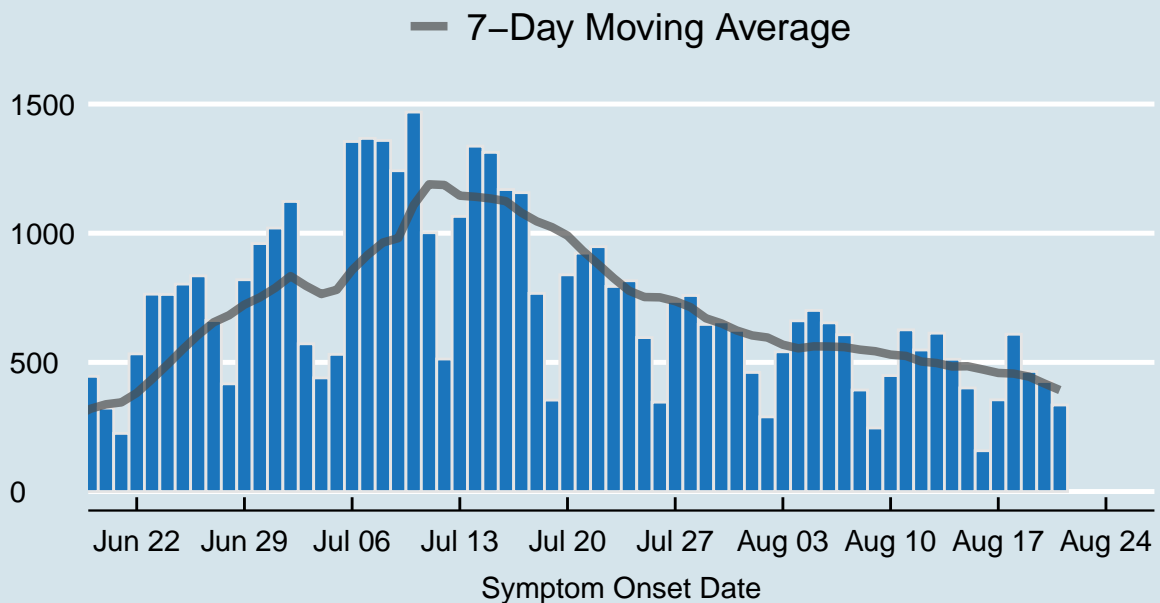
## Clark County, Nevada

Document creation date: August 25, 2020

- General notes: This report uses surveillance data collected by the Southern Nevada Health District. Due to delays related to laboratory processing, reporting, and case investigations, data from the most recent days are less complete than data from older time points. For this reason, as of June 10, 2020 this report will not display data from the previous three days prior to the date that the report was created. As many case investigations are ongoing, all data presented in this report are considered preliminary and subject to change. Data regarding cases, hospitalizations, deaths, and labs were last updated August 25 at 12:00 AM, and data is reported up through August 21, 2020.
- Cases: Symptom onset date was used for aggregating cases. If symptom onset date was missing, the following dates were substituted in this order: diagnosis date, lab collection date, report date (date case was reported to SNHD), event creation date (date case was entered into TriSano, SNHD's surveillance system).
- Hospitalizations: Admission date was used for aggregating hospitalizations. If admission date was missing, report date was substituted. If a person had more than one hospitalization after his/her COVID-19 diagnosis, only the first admission date was used.
- Deaths: Date of death was used for aggregating deaths. If date of death was missing, report date was used.
- For the "7-Day Average of Daily New Cases per 100K, by Age Group (Years)" graph and table, the population data source for calculating rate estimates was the "2019 ASRHO Estimates and Projections Summary for 2020, Office of the State Demographer for Nevada." Rates for individual age categories may be based on small numbers, which may give unstable estimates.
- All graphs in this report show data from approximately 60 days prior to the date of the report.
- All tables show data from the last 14 days before the current date.
- For the "Percent of People Receiving COVID-19 Viral Tests Who Have Positive Results" graph, one person who has multiple specimens collected in one day is only reported once. If any of that person's tests are positive, that person counts as a positive result. If all of that individual's tests are negative, that person counts as a negative result. Laboratory tests were included if they were a test assessing for the presence of SARS-CoV-2 viral RNA, for example PCR tests. Antibody tests were excluded.

## COVID-19 Cases

Clark County, NV



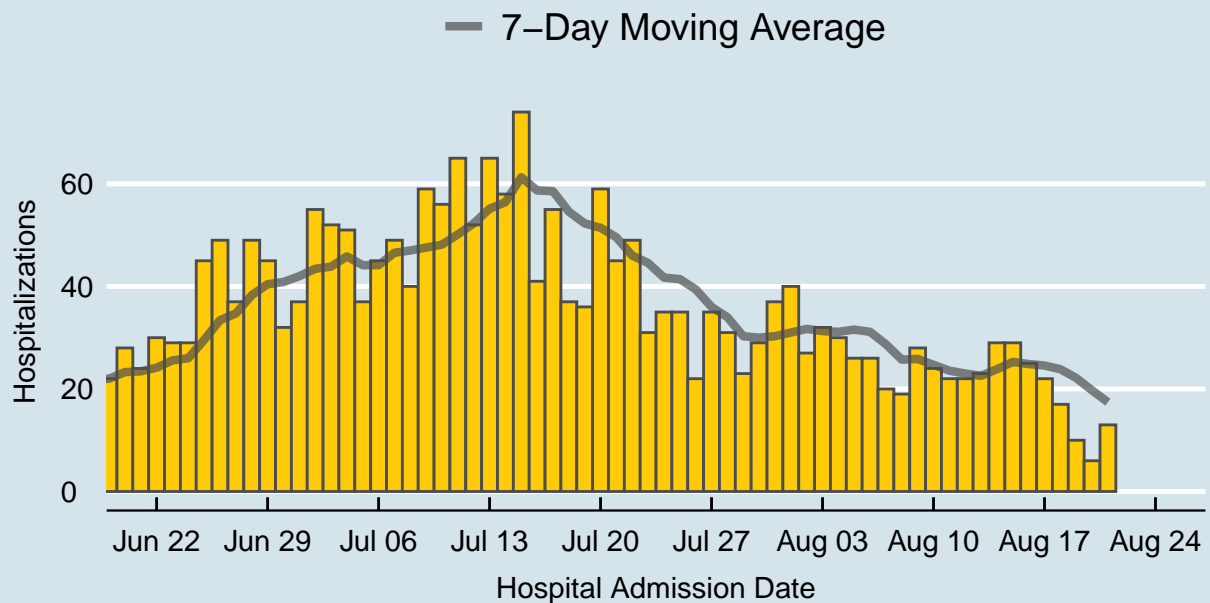
Data source: SNHD Office of Epidemiology and Disease Surveillance

Table 1: COVID-19 Cases per Day, Clark County, NV

Date	Cases per Day	7-Day Moving Average
Aug 08	393	549.3
Aug 09	246	543.1
Aug 10	449	530.0
Aug 11	626	525.0
Aug 12	548	503.1
Aug 13	613	497.4
Aug 14	512	483.9
Aug 15	401	485.0
Aug 16	158	472.4
Aug 17	355	459.0
Aug 18	609	456.6
Aug 19	465	444.7
Aug 20	426	418.0
Aug 21	335	392.7

## COVID-19 Hospitalizations

Clark County, NV



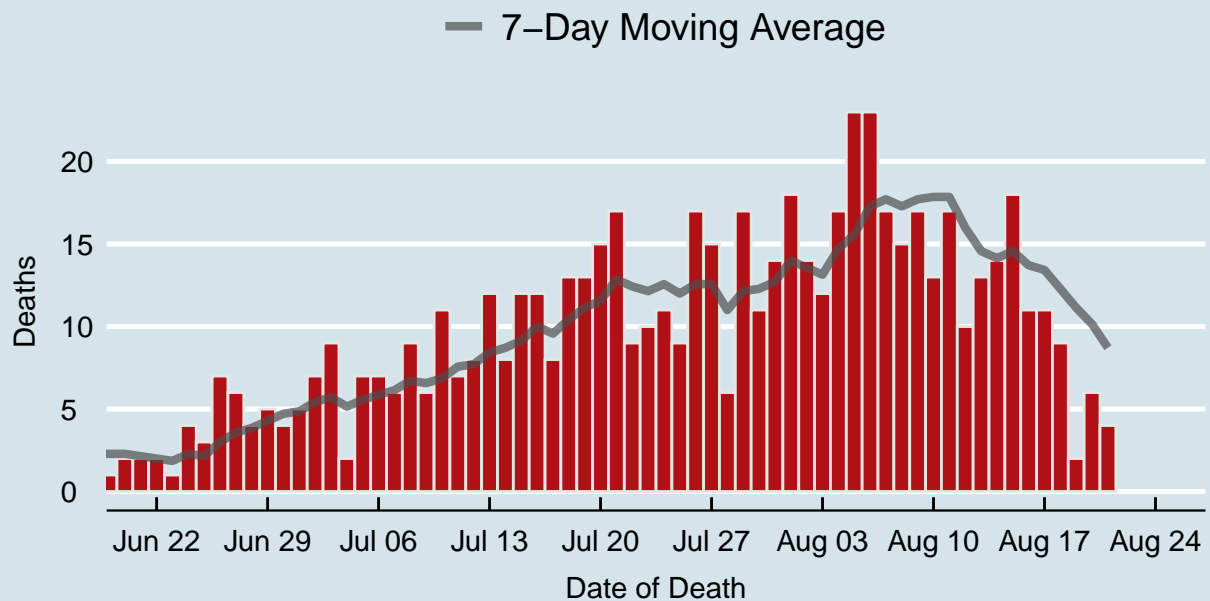
Data source: SNHD Office of Epidemiology and Disease Surveillance

Table 2: COVID-19 Hospitalizations per Day, Clark County, NV

Date	Hospitalizations per Day	7-Day Moving Average
Aug 08	19	25.7
Aug 09	28	25.9
Aug 10	24	24.7
Aug 11	22	23.6
Aug 12	22	23.0
Aug 13	23	22.6
Aug 14	29	23.9
Aug 15	29	25.3
Aug 16	25	24.9
Aug 17	22	24.6
Aug 18	17	23.9
Aug 19	10	22.1
Aug 20	6	19.7
Aug 21	13	17.4

## COVID-19 Deaths

Clark County, NV



Data source: SNHD Office of Epidemiology and Disease Surveillance

Table 3: COVID-19 Deaths per Day, Clark County, NV

Date	Deaths per Day	7-Day Moving Average
Aug 08	15	17.3
Aug 09	17	17.7
Aug 10	13	17.9
Aug 11	17	17.9
Aug 12	10	16.0
Aug 13	13	14.6
Aug 14	14	14.1
Aug 15	18	14.6
Aug 16	11	13.7
Aug 17	11	13.4
Aug 18	9	12.3
Aug 19	2	11.1
Aug 20	6	10.1
Aug 21	4	8.7

## 7-Day Average of Daily New Cases per 100K, by Age Group (Years)

Clark County, NV

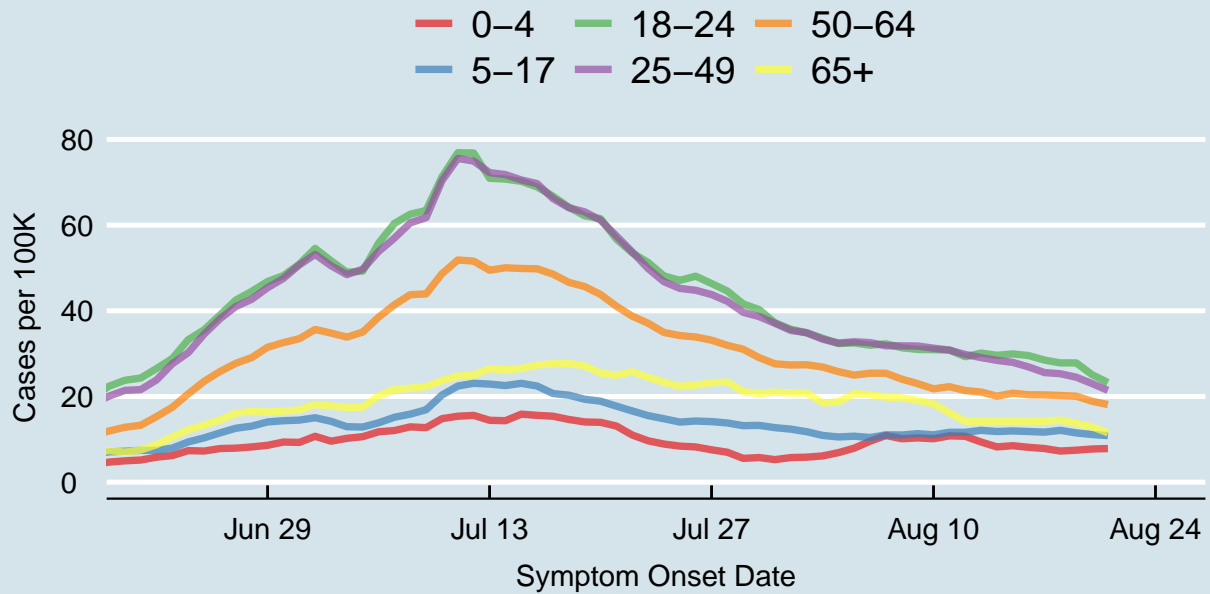
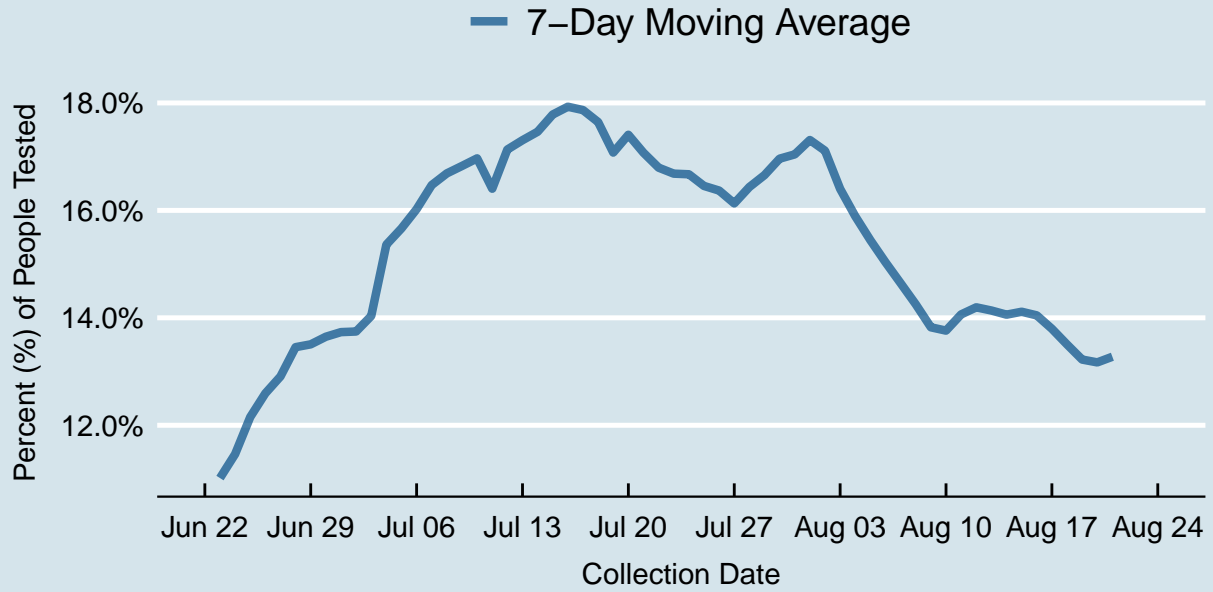


Table 4: 7-Day Average of Daily New Cases per 100K, by Age Group (Years)

Symptom Onset Date	0-4	5-17	18-24	25-49	50-64	65+
Aug 08	10.1	11.0	31.4	31.8	24.0	19.7
Aug 09	10.3	11.3	31.0	31.8	23.0	19.0
Aug 10	10.1	11.0	30.9	31.3	21.8	18.3
Aug 11	10.8	11.6	30.9	30.8	22.3	16.2
Aug 12	10.7	11.6	29.3	29.8	21.4	14.2
Aug 13	9.4	12.1	30.1	29.1	21.0	14.2
Aug 14	8.2	11.8	29.6	28.4	20.1	14.2
Aug 15	8.5	12.0	29.9	28.0	20.8	14.2
Aug 16	8.1	11.8	29.5	26.9	20.4	14.1
Aug 17	7.8	11.7	28.5	25.6	20.4	14.2
Aug 18	7.3	12.1	27.8	25.3	20.2	14.5
Aug 19	7.5	11.5	27.8	24.5	20.1	13.7
Aug 20	7.7	11.1	25.1	23.0	18.9	12.9
Aug 21	7.8	10.9	23.3	21.4	18.1	11.5

## Percent of People Receiving COVID-19 Viral Tests Who Have Positive Results

Clark County, NV





*Report prepared by: Kellie Watkins, PhD, MS, Ying Zhang, PhD, MPH (Office of Epidemiology and Disease Surveillance) and Lei Zhang, MS (Office of Informatics)*