

COVID-19 Trends

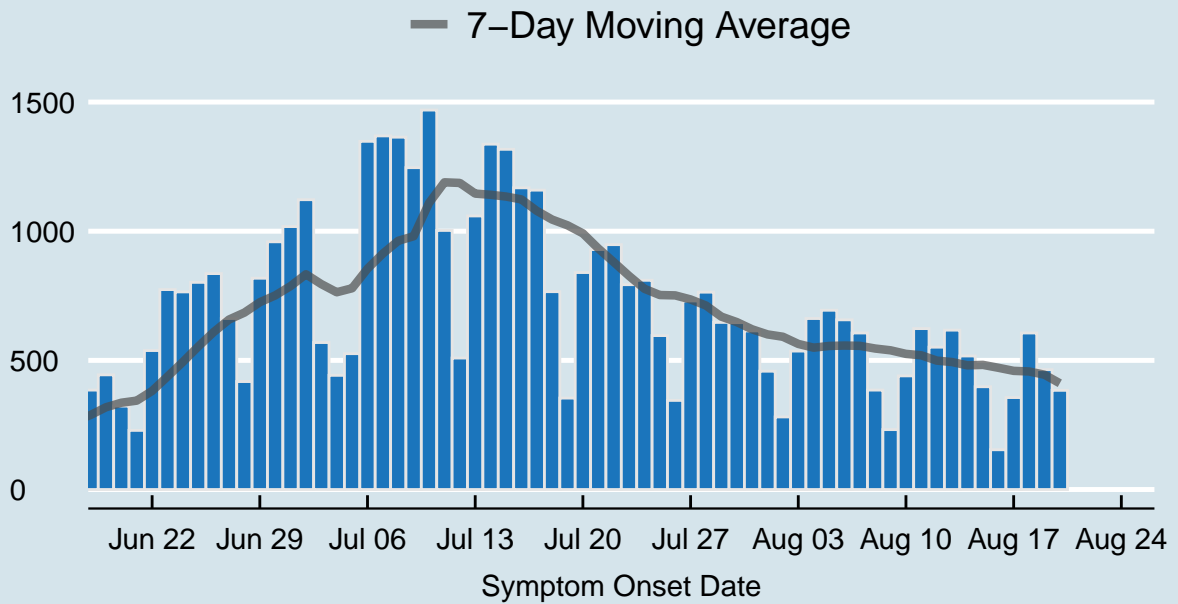
Clark County, Nevada

Document creation date: August 24, 2020

- General notes: This report uses surveillance data collected by the Southern Nevada Health District. Due to delays related to laboratory processing, reporting, and case investigations, data from the most recent days are less complete than data from older time points. For this reason, as of June 10, 2020 this report will not display data from the previous three days prior to the date that the report was created. As many case investigations are ongoing, all data presented in this report are considered preliminary and subject to change. Data regarding cases, hospitalizations, deaths, and labs were last updated August 24 at 12:00 AM, and data is reported up through August 20, 2020.
- Cases: Symptom onset date was used for aggregating cases. If symptom onset date was missing, the following dates were substituted in this order: diagnosis date, lab collection date, report date (date case was reported to SNHD), event creation date (date case was entered into TriSano, SNHD's surveillance system).
- Hospitalizations: Admission date was used for aggregating hospitalizations. If admission date was missing, report date was substituted. If a person had more than one hospitalization after his/her COVID-19 diagnosis, only the first admission date was used.
- Deaths: Date of death was used for aggregating deaths. If date of death was missing, report date was used.
- For the "7-Day Average of Daily New Cases per 100K, by Age Group (Years)" graph and table, the population data source for calculating rate estimates was the "2019 ASRHO Estimates and Projections Summary for 2020, Office of the State Demographer for Nevada." Rates for individual age categories may be based on small numbers, which may give unstable estimates.
- All graphs in this report show data from approximately 60 days prior to the date of the report.
- All tables show data from the last 14 days before the current date.
- For the "Percent of People Receiving COVID-19 Viral Tests Who Have Positive Results" graph, one person who has multiple specimens collected in one day is only reported once. If any of that person's tests are positive, that person counts as a positive result. If all of that individual's tests are negative, that person counts as a negative result. Laboratory tests were included if they were a test assessing for the presence of SARS-CoV-2 viral RNA, for example PCR tests. Antibody tests were excluded.

COVID-19 Cases

Clark County, NV



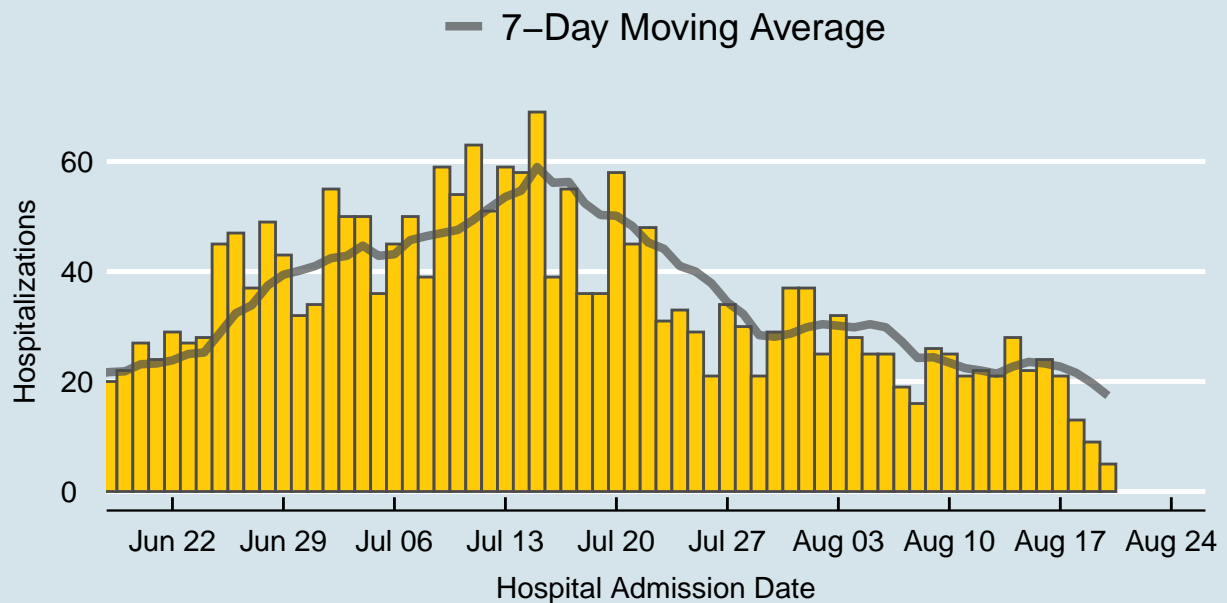
Data source: SNHD Office of Epidemiology and Disease Surveillance

Table 1: COVID-19 Cases per Day, Clark County, NV

Date	Cases per Day	7-Day Moving Average
Aug 07	606	556.3
Aug 08	385	545.9
Aug 09	232	538.9
Aug 10	440	525.1
Aug 11	623	519.6
Aug 12	551	499.1
Aug 13	617	493.4
Aug 14	517	480.7
Aug 15	398	482.6
Aug 16	154	471.4
Aug 17	356	459.4
Aug 18	606	457.0
Aug 19	464	444.6
Aug 20	384	411.3

COVID-19 Hospitalizations

Clark County, NV



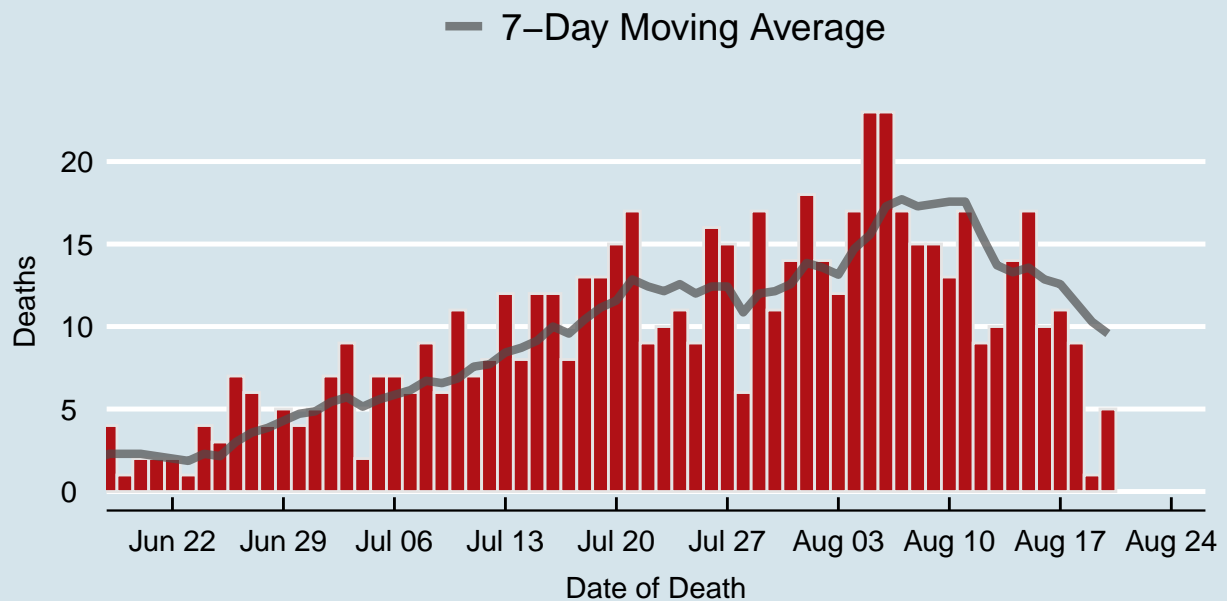
Data source: SNHD Office of Epidemiology and Disease Surveillance

Table 2: COVID-19 Hospitalizations per Day, Clark County, NV

Date	Hospitalizations per Day	7-Day Moving Average
Aug 07	19	27.3
Aug 08	16	24.3
Aug 09	26	24.4
Aug 10	25	23.4
Aug 11	21	22.4
Aug 12	22	22.0
Aug 13	21	21.4
Aug 14	28	22.7
Aug 15	22	23.6
Aug 16	24	23.3
Aug 17	21	22.7
Aug 18	13	21.6
Aug 19	9	19.7
Aug 20	5	17.4

COVID-19 Deaths

Clark County, NV



Data source: SNHD Office of Epidemiology and Disease Surveillance

Table 3: COVID-19 Deaths per Day, Clark County, NV

Date	Deaths per Day	7-Day Moving Average
Aug 07	17	17.7
Aug 08	15	17.3
Aug 09	15	17.4
Aug 10	13	17.6
Aug 11	17	17.6
Aug 12	9	15.6
Aug 13	10	13.7
Aug 14	14	13.3
Aug 15	17	13.6
Aug 16	10	12.9
Aug 17	11	12.6
Aug 18	9	11.4
Aug 19	1	10.3
Aug 20	5	9.6

7-Day Average of Daily New Cases per 100K, by Age Group (Years)

Clark County, NV

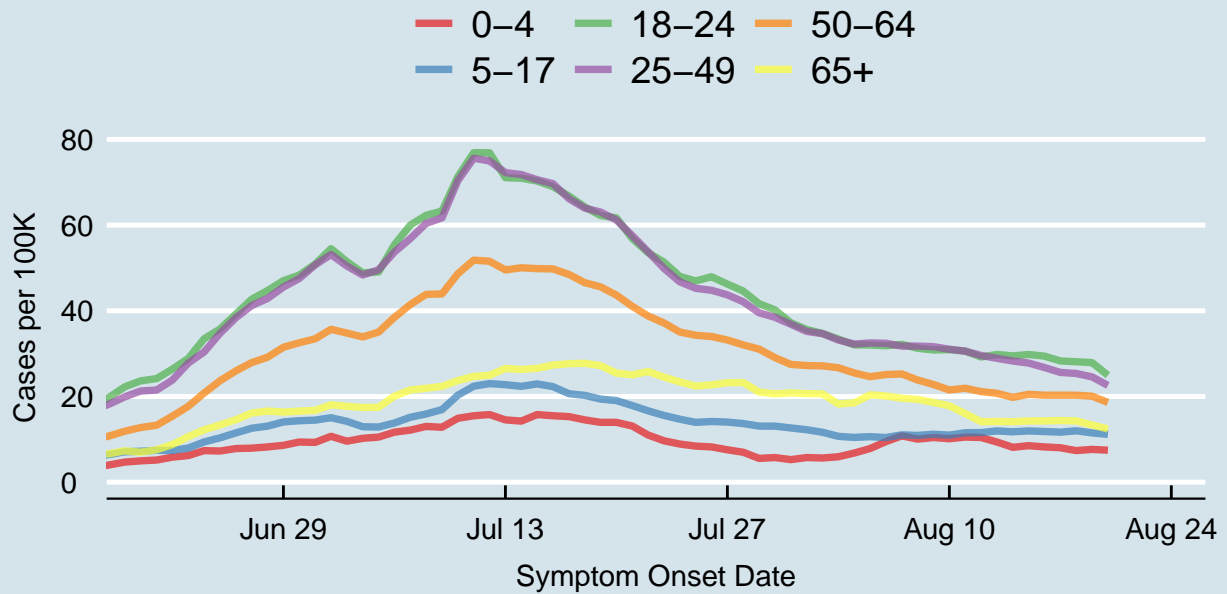
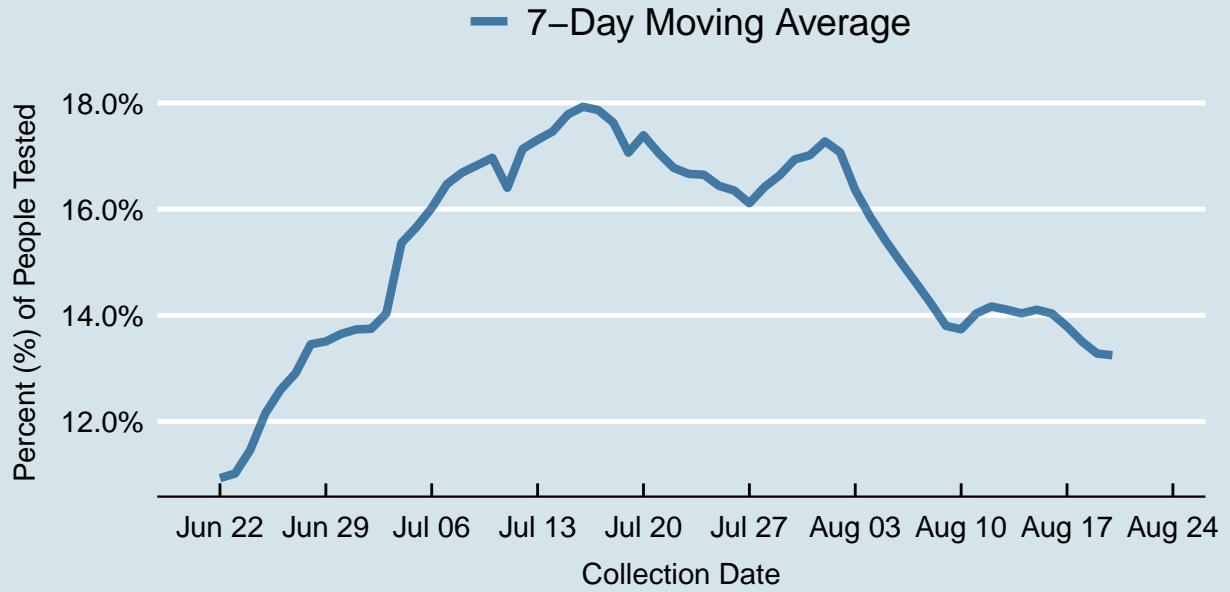


Table 4: 7-Day Average of Daily New Cases per 100K, by Age Group (Years)

Symptom Onset Date	0-4	5-17	18-24	25-49	50-64	65+
Aug 07	10.8	11.0	32.2	31.7	25.3	19.6
Aug 08	10.0	10.9	31.2	31.8	23.8	19.3
Aug 09	10.4	11.2	30.9	31.6	22.8	18.6
Aug 10	10.1	11.0	30.9	31.0	21.5	17.8
Aug 11	10.5	11.5	30.6	30.6	21.9	16.0
Aug 12	10.4	11.6	29.2	29.6	21.1	14.1
Aug 13	9.4	12.0	29.8	28.9	20.7	14.2
Aug 14	8.1	11.7	29.5	28.3	19.8	14.1
Aug 15	8.5	12.0	29.8	27.8	20.5	14.3
Aug 16	8.2	11.8	29.4	26.8	20.3	14.3
Aug 17	8.0	11.7	28.3	25.6	20.3	14.4
Aug 18	7.4	12.0	28.1	25.4	20.3	14.3
Aug 19	7.7	11.5	27.9	24.6	20.1	13.4
Aug 20	7.5	11.1	25.0	22.6	18.6	12.4

Percent of People Receiving COVID-19 Viral Tests Who Have Positive Results

Clark County, NV





Report prepared by: Kellie Watkins, PhD, MS, Ying Zhang, PhD, MPH (Office of Epidemiology and Disease Surveillance) and Lei Zhang, MS (Office of Informatics)