

COVID-19 Trends

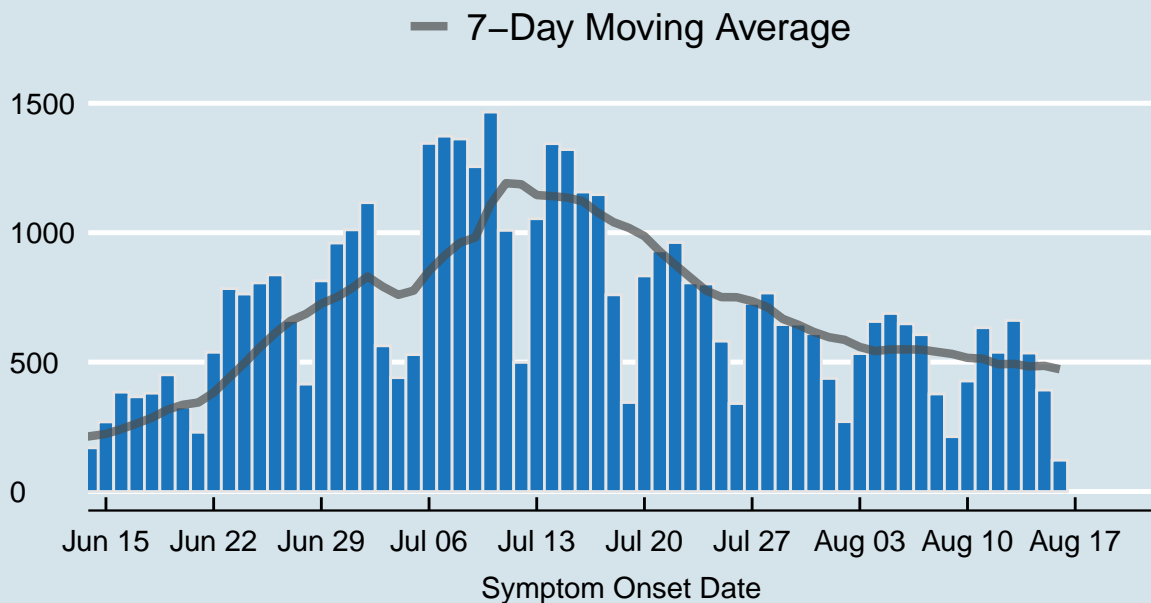
Clark County, Nevada

Document creation date: August 20, 2020

- General notes: This report uses surveillance data collected by the Southern Nevada Health District. Due to delays related to laboratory processing, reporting, and case investigations, data from the most recent days are less complete than data from older time points. For this reason, as of June 10, 2020 this report will not display data from the previous three days prior to the date that the report was created. As many case investigations are ongoing, all data presented in this report are considered preliminary and subject to change. Data regarding cases, hospitalizations, deaths, and labs were last updated August 20 at 12:00 AM, and data is reported up through August 16, 2020.
- Cases: Symptom onset date was used for aggregating cases. If symptom onset date was missing, the following dates were substituted in this order: diagnosis date, lab collection date, report date (date case was reported to SNHD), event creation date (date case was entered into TriSano, SNHD's surveillance system).
- Hospitalizations: Admission date was used for aggregating hospitalizations. If admission date was missing, report date was substituted. If a person had more than one hospitalization after his/her COVID-19 diagnosis, only the first admission date was used.
- Deaths: Date of death was used for aggregating deaths. If date of death was missing, report date was used.
- For the "7-Day Average of Daily New Cases per 100K, by Age Group (Years)" graph and table, the population data source for calculating rate estimates was the "2019 ASRHO Estimates and Projections Summary for 2020, Office of the State Demographer for Nevada." Rates for individual age categories may be based on small numbers, which may give unstable estimates.
- All graphs in this report show data from approximately 60 days prior to the date of the report.
- All tables show data from the last 14 days before the current date.
- For the "Percent of People Receiving COVID-19 Viral Tests Who Have Positive Results" graph, one person who has multiple specimens collected in one day is only reported once. If any of that person's tests are positive, that person counts as a positive result. If all of that individual's tests are negative, that person counts as a negative result. Laboratory tests were included if they were a test assessing for the presence of SARS-CoV-2 viral RNA, for example PCR tests. Antibody tests were excluded.

COVID-19 Cases

Clark County, NV



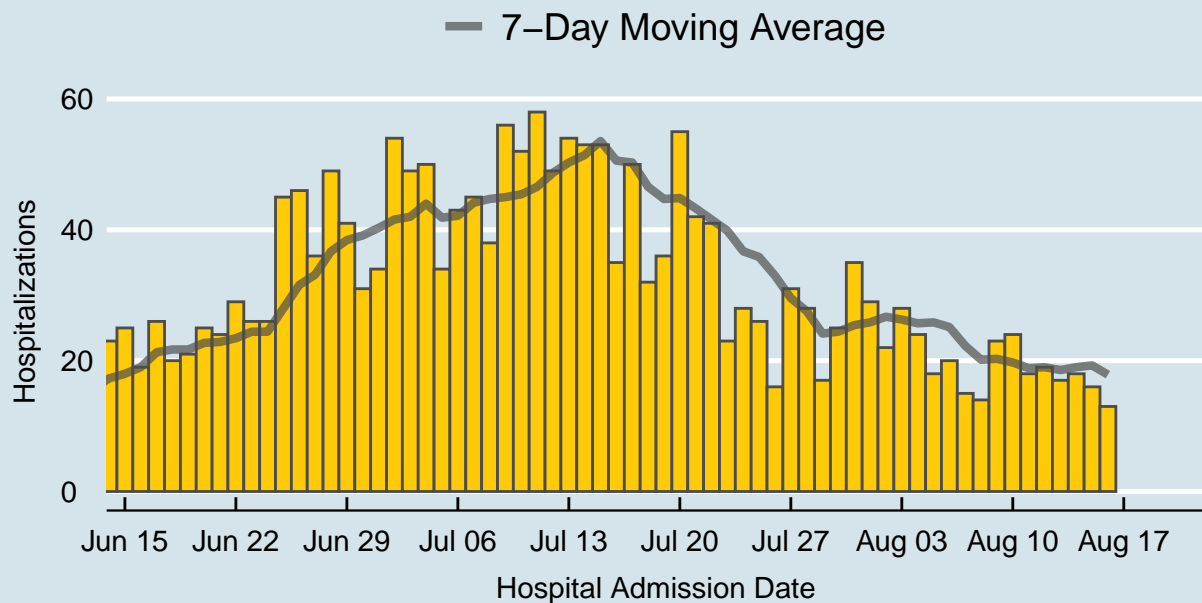
Data source: SNHD Office of Epidemiology and Disease Surveillance

Table 1: COVID-19 Cases per Day, Clark County, NV

Date	Cases per Day	7-Day Moving Average
Aug 03	533	558.4
Aug 04	657	542.7
Aug 05	688	548.9
Aug 06	648	549.0
Aug 07	606	548.4
Aug 08	377	539.9
Aug 09	212	531.6
Aug 10	427	516.4
Aug 11	633	513.0
Aug 12	538	491.6
Aug 13	661	493.4
Aug 14	535	483.3
Aug 15	392	485.4
Aug 16	121	472.4

COVID-19 Hospitalizations

Clark County, NV



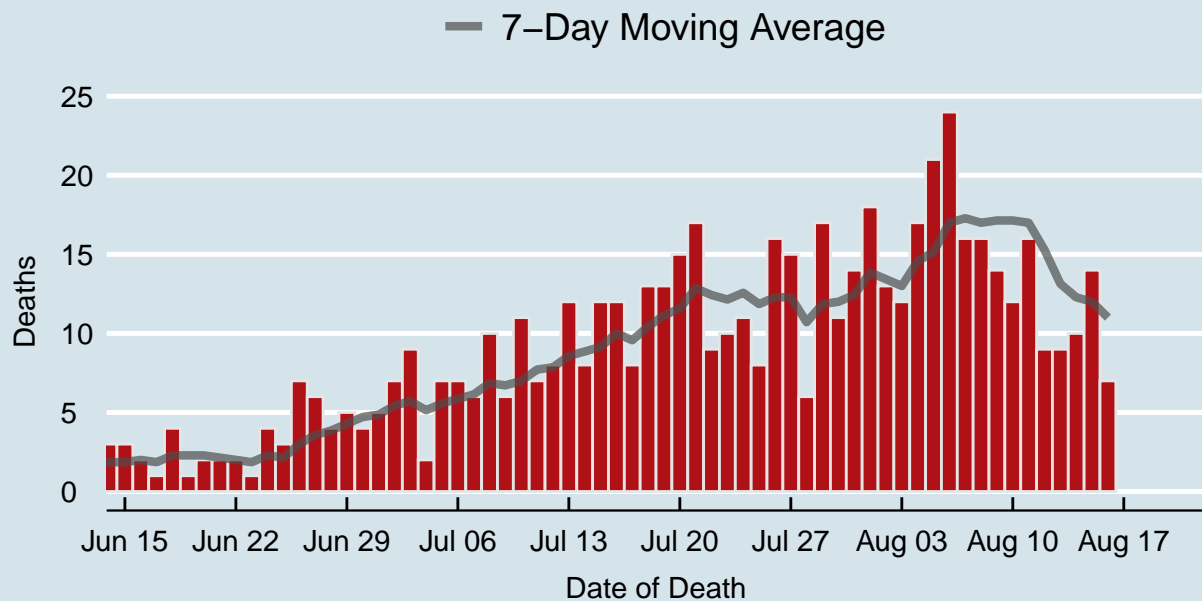
Data source: SNHD Office of Epidemiology and Disease Surveillance

Table 2: COVID-19 Hospitalizations per Day, Clark County, NV

Date	Hospitalizations per Day	7-Day Moving Average
Aug 03	28	26.3
Aug 04	24	25.7
Aug 05	18	25.9
Aug 06	20	25.1
Aug 07	15	22.3
Aug 08	14	20.1
Aug 09	23	20.3
Aug 10	24	19.7
Aug 11	18	18.9
Aug 12	19	19.0
Aug 13	17	18.6
Aug 14	18	19.0
Aug 15	16	19.3
Aug 16	13	17.9

COVID-19 Deaths

Clark County, NV



Data source: SNHD Office of Epidemiology and Disease Surveillance

Table 3: COVID-19 Deaths per Day, Clark County, NV

Date	Deaths per Day	7-Day Moving Average
Aug 03	12	13
Aug 04	17	15
Aug 05	21	15
Aug 06	24	17
Aug 07	16	17
Aug 08	16	17
Aug 09	14	17
Aug 10	12	17
Aug 11	16	17
Aug 12	9	15
Aug 13	9	13
Aug 14	10	12
Aug 15	14	12
Aug 16	7	11

7-Day Average of Daily New Cases per 100K, by Age Group (Years)

Clark County, NV

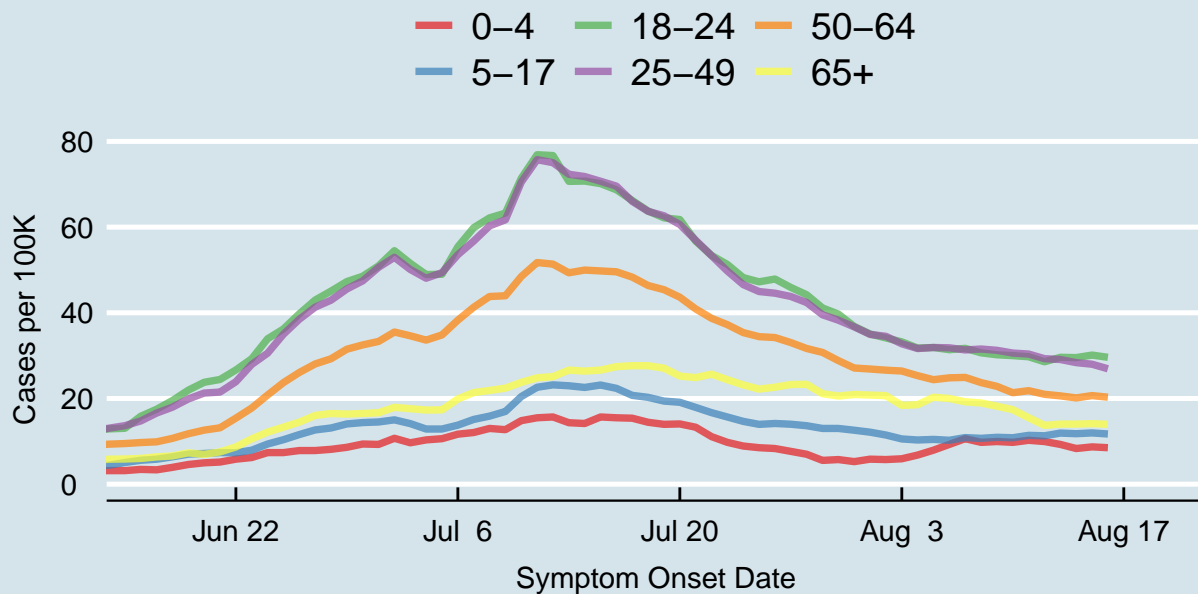
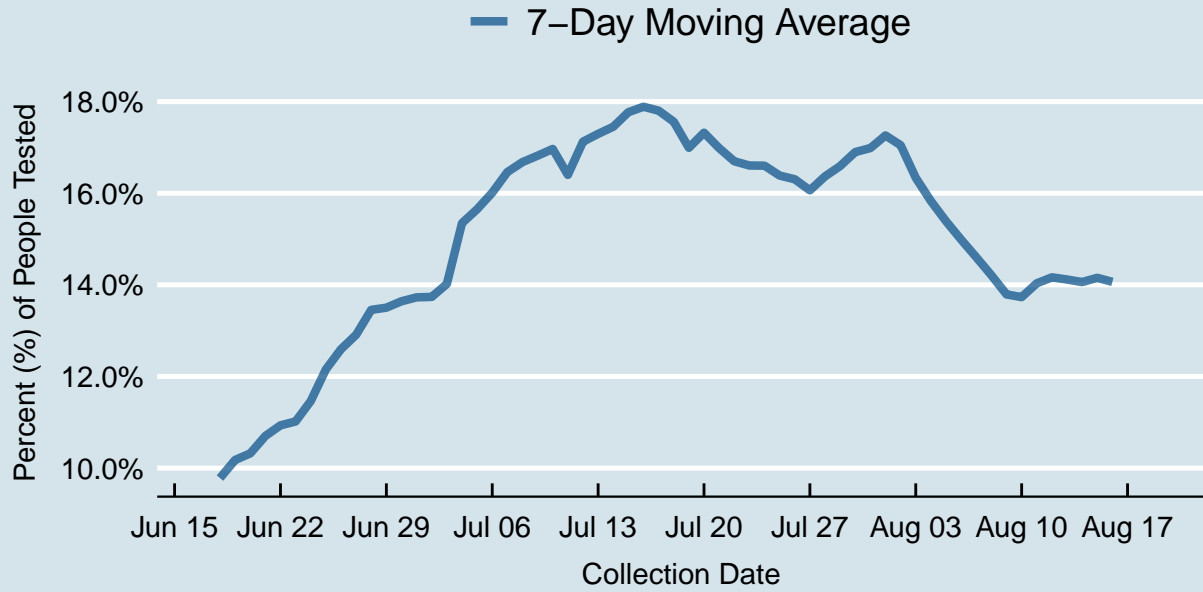


Table 4: 7-Day Average of Daily New Cases per 100K, by Age Group (Years)

Symptom Onset Date	0-4	5-17	18-24	25-49	50-64	65+
Aug 03	5.9	10.6	33.2	32.8	26.4	18.4
Aug 04	6.8	10.3	31.8	31.7	25.3	18.6
Aug 05	7.9	10.4	31.9	31.9	24.4	20.3
Aug 06	9.3	10.2	31.4	31.8	24.8	20.0
Aug 07	10.6	10.9	31.7	31.3	24.9	19.2
Aug 08	9.8	10.7	30.7	31.5	23.7	19.0
Aug 09	9.9	10.9	30.2	31.2	22.8	18.2
Aug 10	9.8	10.8	30.0	30.6	21.3	17.4
Aug 11	10.2	11.4	29.7	30.4	21.8	15.5
Aug 12	9.9	11.3	28.6	29.3	21.0	13.7
Aug 13	9.3	11.9	29.6	29.1	20.6	14.0
Aug 14	8.3	11.8	29.5	28.4	20.1	14.0
Aug 15	8.7	12.0	30.1	28.0	20.7	14.1
Aug 16	8.5	11.7	29.6	26.9	20.3	14.0

Percent of People Receiving COVID-19 Viral Tests Who Have Positive Results

Clark County, NV





Report prepared by: Kellie Watkins, PhD, MS, Ying Zhang, PhD, MPH (Office of Epidemiology and Disease Surveillance) and Lei Zhang, MS (Office of Informatics)