

# COVID-19 Trends

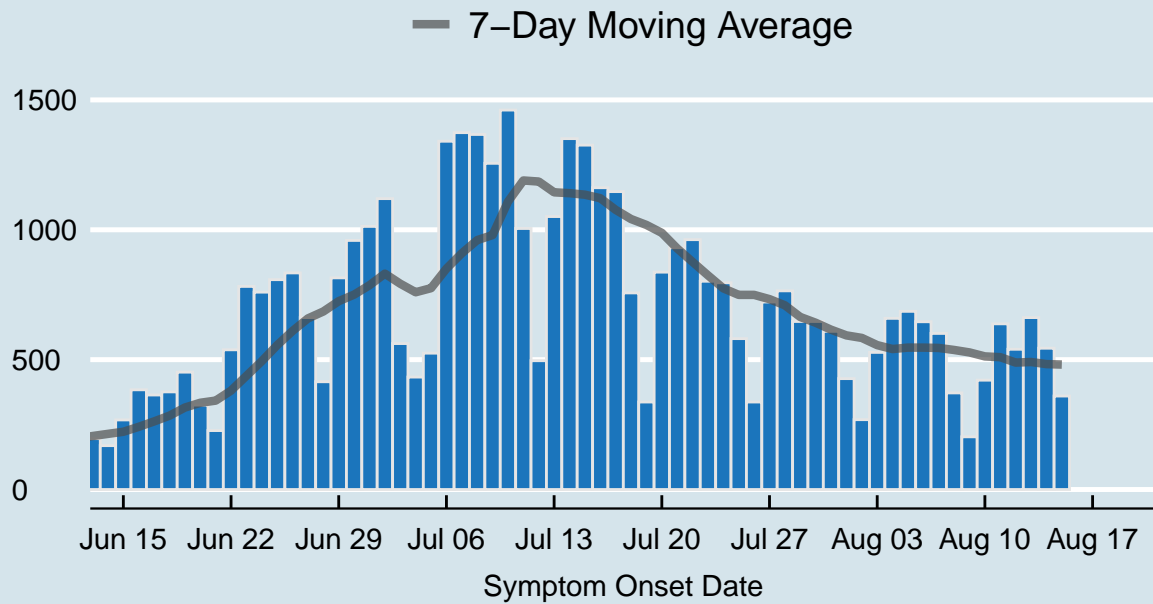
Clark County, Nevada

Document creation date: August 19, 2020

- General notes: This report uses surveillance data collected by the Southern Nevada Health District. Due to delays related to laboratory processing, reporting, and case investigations, data from the most recent days are less complete than data from older time points. For this reason, as of June 10, 2020 this report will not display data from the previous three days prior to the date that the report was created. As many case investigations are ongoing, all data presented in this report are considered preliminary and subject to change. Data regarding cases, hospitalizations, deaths, and labs were last updated August 19 at 12:00 AM, and data is reported up through August 15, 2020.
- Cases: Symptom onset date was used for aggregating cases. If symptom onset date was missing, the following dates were substituted in this order: diagnosis date, lab collection date, report date (date case was reported to SNHD), event creation date (date case was entered into TriSano, SNHD's surveillance system).
- Hospitalizations: Admission date was used for aggregating hospitalizations. If admission date was missing, report date was substituted. If a person had more than one hospitalization after his/her COVID-19 diagnosis, only the first admission date was used.
- Deaths: Date of death was used for aggregating deaths. If date of death was missing, report date was used.
- For the "7-Day Average of Daily New Cases per 100K, by Age Group (Years)" graph and table, the population data source for calculating rate estimates was the "2019 ASRHO Estimates and Projections Summary for 2020, Office of the State Demographer for Nevada." Rates for individual age categories may be based on small numbers, which may give unstable estimates.
- All graphs in this report show data from approximately 60 days prior to the date of the report.
- All tables show data from the last 14 days before the current date.
- For the "Percent of People Receiving COVID-19 Viral Tests Who Have Positive Results" graph, one person who has multiple specimens collected in one day is only reported once. If any of that person's tests are positive, that person counts as a positive result. If all of that individual's tests are negative, that person counts as a negative result. Laboratory tests were included if they were a test assessing for the presence of SARS-CoV-2 viral RNA, for example PCR tests. Antibody tests were excluded.

## COVID-19 Cases

Clark County, NV



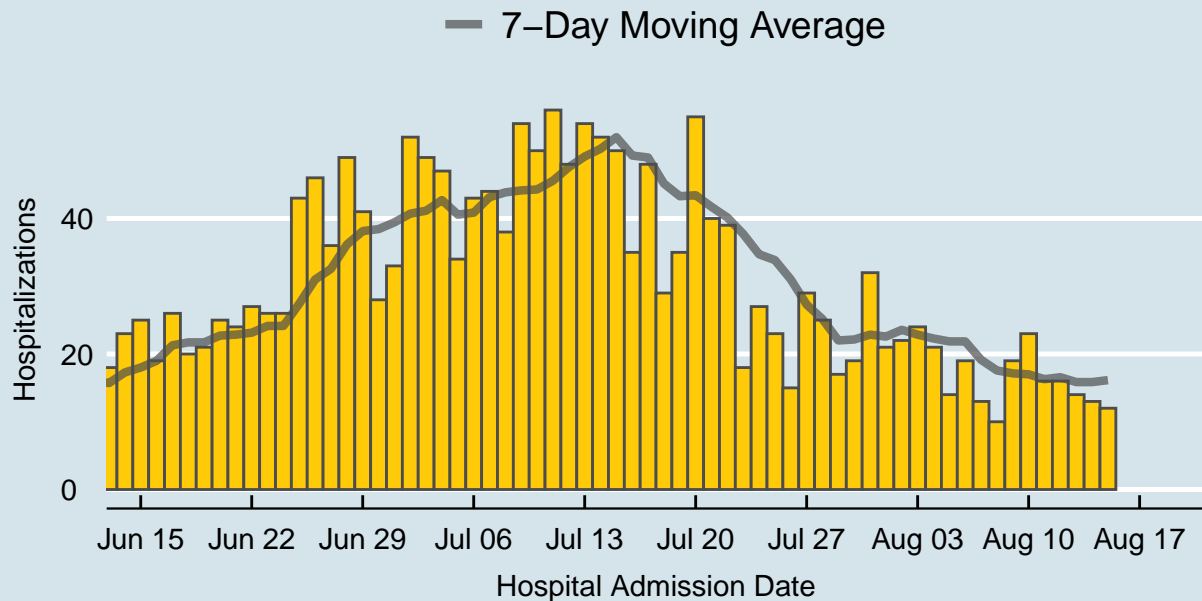
Data source: SNHD Office of Epidemiology and Disease Surveillance

Table 1: COVID-19 Cases per Day, Clark County, NV

Date	Cases per Day	7-Day Moving Average
Aug 02	269	583.7
Aug 03	528	556.0
Aug 04	659	540.9
Aug 05	686	546.4
Aug 06	646	546.3
Aug 07	601	545.1
Aug 08	372	537.3
Aug 09	203	527.9
Aug 10	421	512.6
Aug 11	638	509.6
Aug 12	540	488.7
Aug 13	662	491.0
Aug 14	544	482.9
Aug 15	360	481.1

## COVID-19 Hospitalizations

Clark County, NV



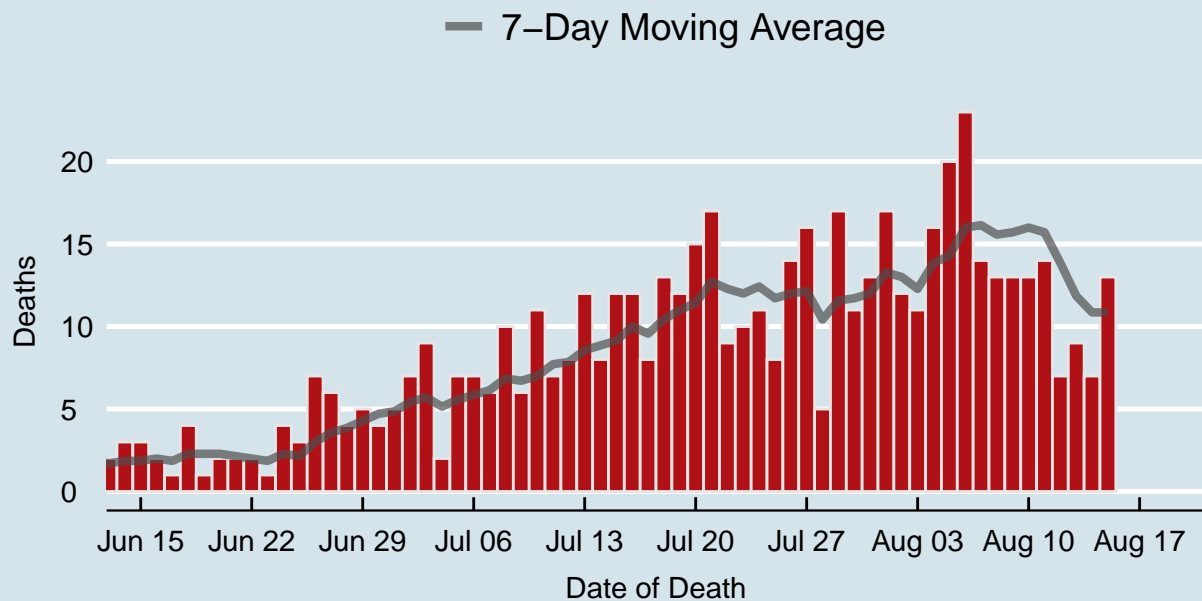
Data source: SNHD Office of Epidemiology and Disease Surveillance

Table 2: COVID-19 Hospitalizations per Day, Clark County, NV

Date	Hospitalizations per Day	7-Day Moving Average
Aug 02	22	23.6
Aug 03	24	22.9
Aug 04	21	22.3
Aug 05	14	21.9
Aug 06	19	21.9
Aug 07	13	19.1
Aug 08	10	17.6
Aug 09	19	17.1
Aug 10	23	17.0
Aug 11	16	16.3
Aug 12	16	16.6
Aug 13	14	15.9
Aug 14	13	15.9
Aug 15	12	16.1

## COVID-19 Deaths

Clark County, NV



Data source: SNHD Office of Epidemiology and Disease Surveillance

Table 3: COVID-19 Deaths per Day, Clark County, NV

Date	Deaths per Day	7-Day Moving Average
Aug 02	12	13
Aug 03	11	12
Aug 04	16	14
Aug 05	20	14
Aug 06	23	16
Aug 07	14	16
Aug 08	13	16
Aug 09	13	16
Aug 10	13	16
Aug 11	14	16
Aug 12	7	14
Aug 13	9	12
Aug 14	7	11
Aug 15	13	11

## 7-Day Average of Daily New Cases per 100K, by Age Group (Years)

Clark County, NV

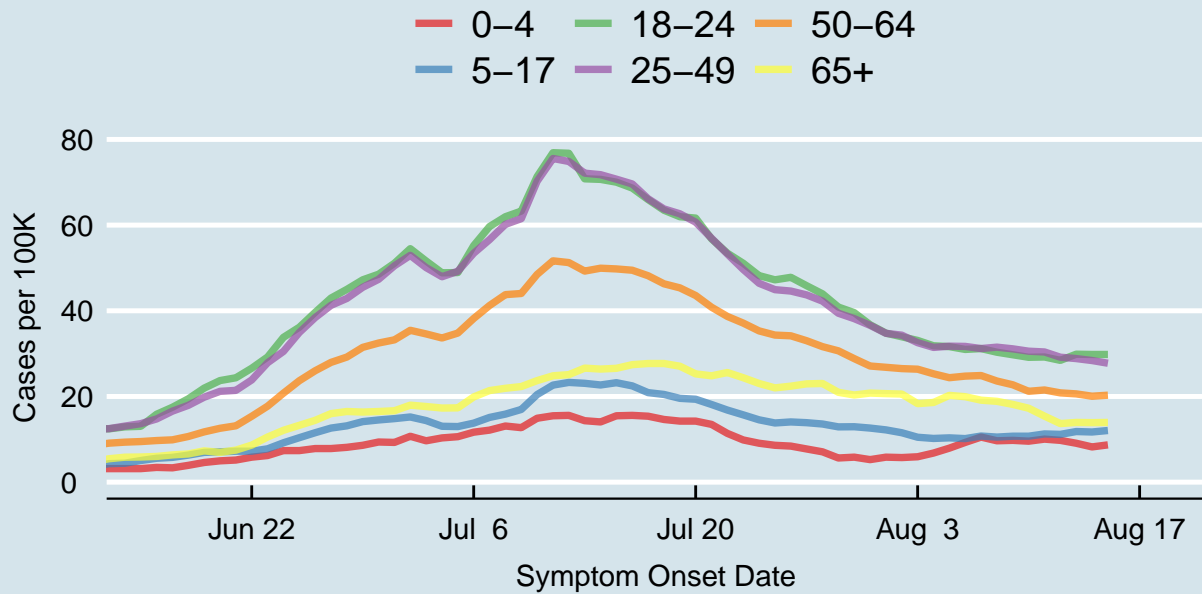
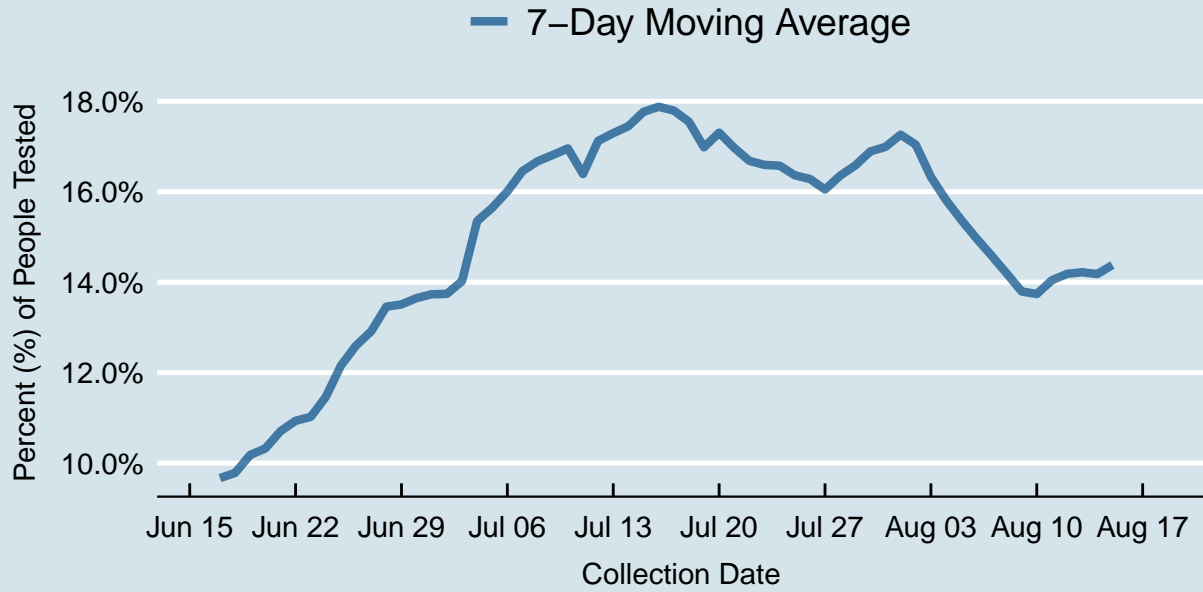


Table 4: 7-Day Average of Daily New Cases per 100K, by Age Group (Years)

Symptom Onset Date	0-4	5-17	18-24	25-49	50-64	65+
Aug 02	5.7	11.5	33.9	34.3	26.5	20.6
Aug 03	5.9	10.5	33.1	32.6	26.4	18.3
Aug 04	6.8	10.2	31.8	31.5	25.3	18.6
Aug 05	7.9	10.3	31.6	31.7	24.4	20.3
Aug 06	9.3	10.2	31.0	31.7	24.8	19.9
Aug 07	10.5	10.8	31.2	31.2	24.9	19.1
Aug 08	9.7	10.5	30.3	31.5	23.6	18.9
Aug 09	9.8	10.7	29.7	31.1	22.7	18.2
Aug 10	9.6	10.7	29.1	30.6	21.2	17.3
Aug 11	10.0	11.3	29.2	30.4	21.5	15.4
Aug 12	9.8	11.1	28.4	29.2	20.8	13.7
Aug 13	9.1	11.8	29.9	28.8	20.6	13.9
Aug 14	8.2	11.7	29.8	28.4	20.1	13.9
Aug 15	8.7	12.1	29.8	27.8	20.3	13.9

## Percent of People Receiving COVID-19 Viral Tests Who Have Positive Results

Clark County, NV





*Report prepared by: Kellie Watkins, PhD, MS, Ying Zhang, PhD, MPH (Office of Epidemiology and Disease Surveillance) and Lei Zhang, MS (Office of Informatics)*