

# COVID-19 Trends

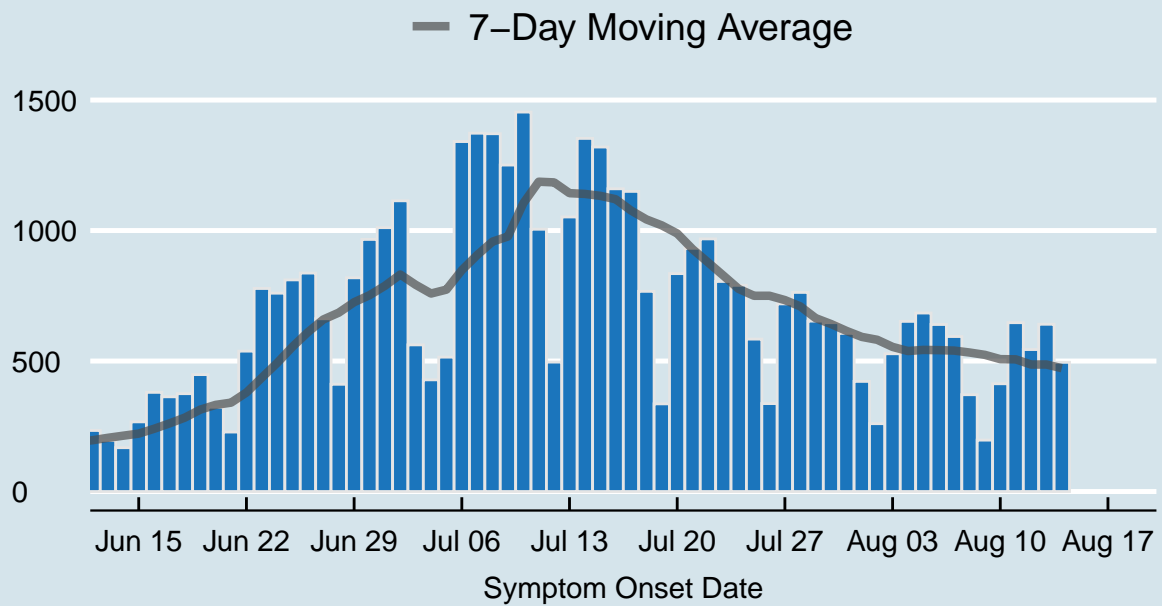
Clark County, Nevada

Document creation date: August 18, 2020

- General notes: This report uses surveillance data collected by the Southern Nevada Health District. Due to delays related to laboratory processing, reporting, and case investigations, data from the most recent days are less complete than data from older time points. For this reason, as of June 10, 2020 this report will not display data from the previous three days prior to the date that the report was created. As many case investigations are ongoing, all data presented in this report are considered preliminary and subject to change. Data regarding cases, hospitalizations, deaths, and labs were last updated August 18 at 12:00 AM, and data is reported up through August 14, 2020.
- Cases: Symptom onset date was used for aggregating cases. If symptom onset date was missing, the following dates were substituted in this order: diagnosis date, lab collection date, report date (date case was reported to SNHD), event creation date (date case was entered into TriSano, SNHD's surveillance system).
- Hospitalizations: Admission date was used for aggregating hospitalizations. If admission date was missing, report date was substituted. If a person had more than one hospitalization after his/her COVID-19 diagnosis, only the first admission date was used.
- Deaths: Date of death was used for aggregating deaths. If date of death was missing, report date was used.
- For the "7-Day Average of Daily New Cases per 100K, by Age Group (Years)" graph and table, the population data source for calculating rate estimates was the "2019 ASRHO Estimates and Projections Summary for 2020, Office of the State Demographer for Nevada." Rates for individual age categories may be based on small numbers, which may give unstable estimates.
- All graphs in this report show data from approximately 60 days prior to the date of the report.
- All tables show data from the last 14 days before the current date.
- For the "Percent of People Receiving COVID-19 Viral Tests Who Have Positive Results" graph, one person who has multiple specimens collected in one day is only reported once. If any of that person's tests are positive, that person counts as a positive result. If all of that individual's tests are negative, that person counts as a negative result. Laboratory tests were included if they were a test assessing for the presence of SARS-CoV-2 viral RNA, for example PCR tests. Antibody tests were excluded.

## COVID-19 Cases

Clark County, NV



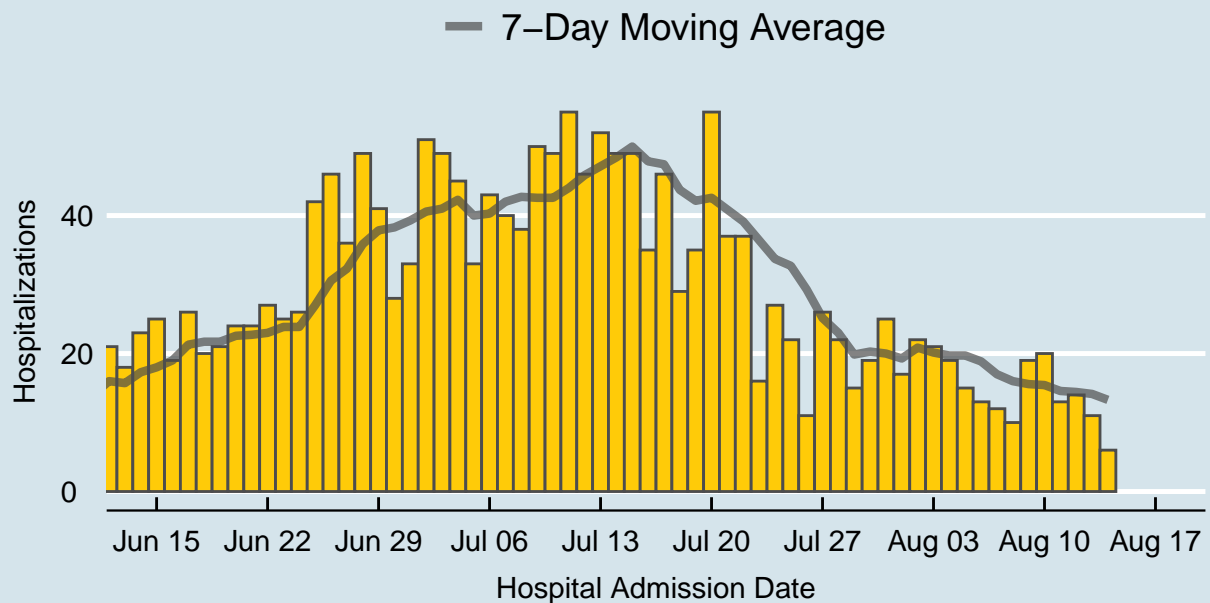
Data source: SNHD Office of Epidemiology and Disease Surveillance

Table 1: COVID-19 Cases per Day, Clark County, NV

Date	Cases per Day	7-Day Moving Average
Aug 01	422	592.4
Aug 02	260	581.4
Aug 03	528	554.1
Aug 04	652	538.3
Aug 05	684	542.7
Aug 06	640	541.7
Aug 07	594	540.0
Aug 08	371	532.7
Aug 09	197	523.7
Aug 10	413	507.3
Aug 11	647	506.6
Aug 12	544	486.6
Aug 13	641	486.7
Aug 14	495	472.6

## COVID-19 Hospitalizations

Clark County, NV



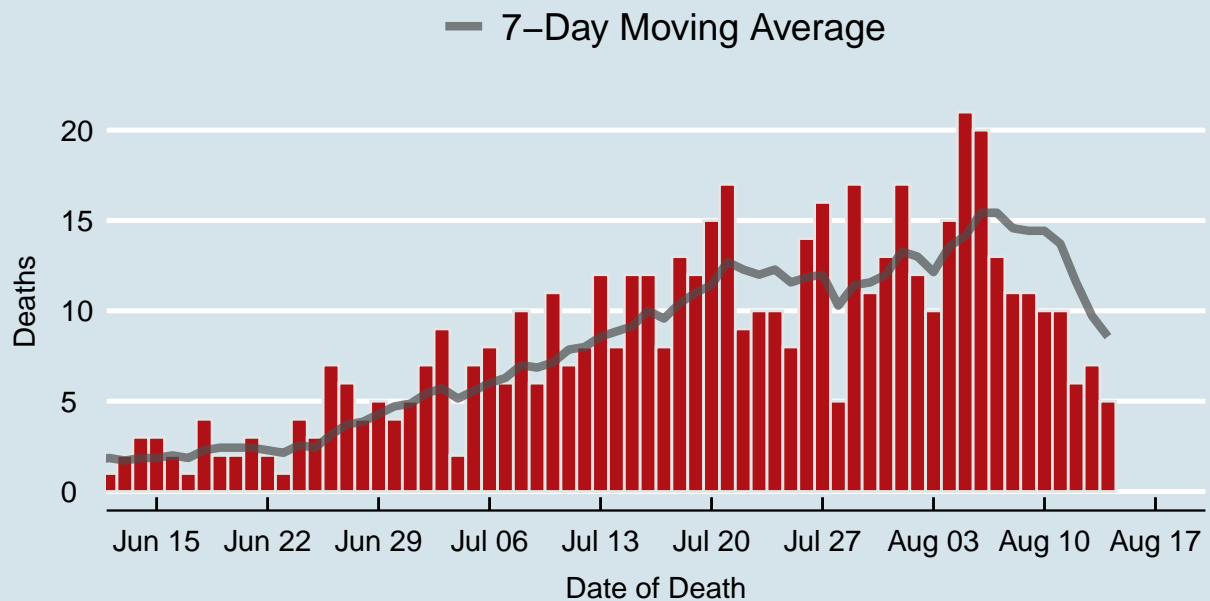
Data source: SNHD Office of Epidemiology and Disease Surveillance

Table 2: COVID-19 Hospitalizations per Day, Clark County, NV

Date	Hospitalizations per Day	7-Day Moving Average
Aug 01	17	19.3
Aug 02	22	20.9
Aug 03	21	20.1
Aug 04	19	19.7
Aug 05	15	19.7
Aug 06	13	18.9
Aug 07	12	17.0
Aug 08	10	16.0
Aug 09	19	15.6
Aug 10	20	15.4
Aug 11	13	14.6
Aug 12	14	14.4
Aug 13	11	14.1
Aug 14	6	13.3

## COVID-19 Deaths

Clark County, NV



Data source: SNHD Office of Epidemiology and Disease Surveillance

Table 3: COVID-19 Deaths per Day, Clark County, NV

Date	Deaths per Day	7-Day Moving Average
Aug 01	17	13.3
Aug 02	12	13.0
Aug 03	10	12.1
Aug 04	15	13.6
Aug 05	21	14.1
Aug 06	20	15.4
Aug 07	13	15.4
Aug 08	11	14.6
Aug 09	11	14.4
Aug 10	10	14.4
Aug 11	10	13.7
Aug 12	6	11.6
Aug 13	7	9.7
Aug 14	5	8.6

## 7-Day Average of Daily New Cases per 100K, by Age Group (Years)

Clark County, NV

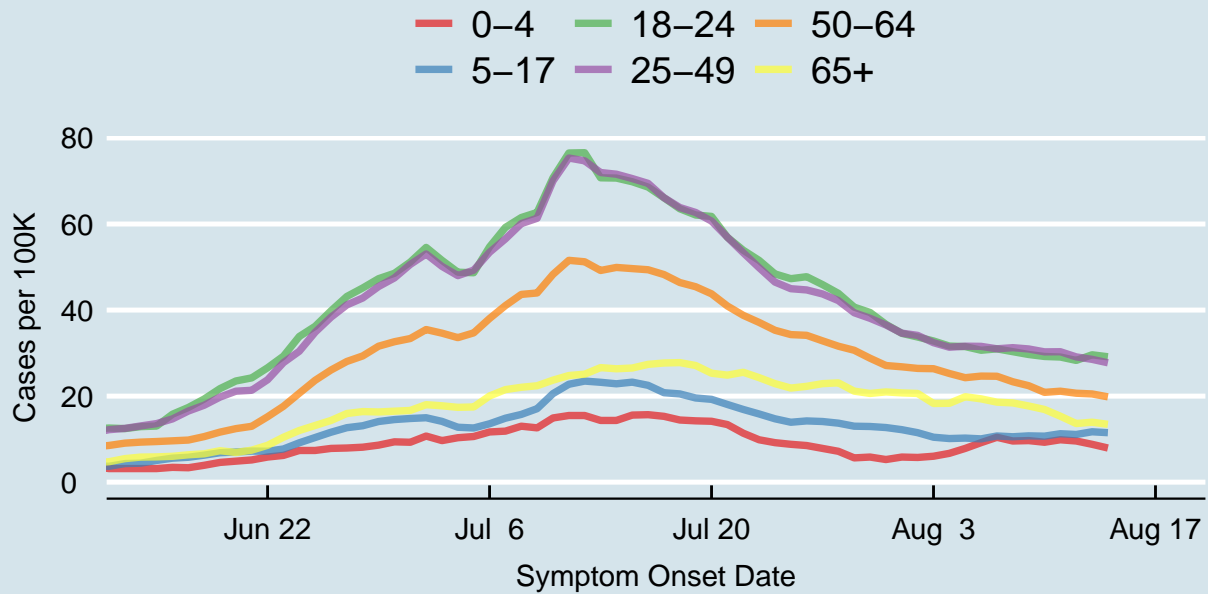
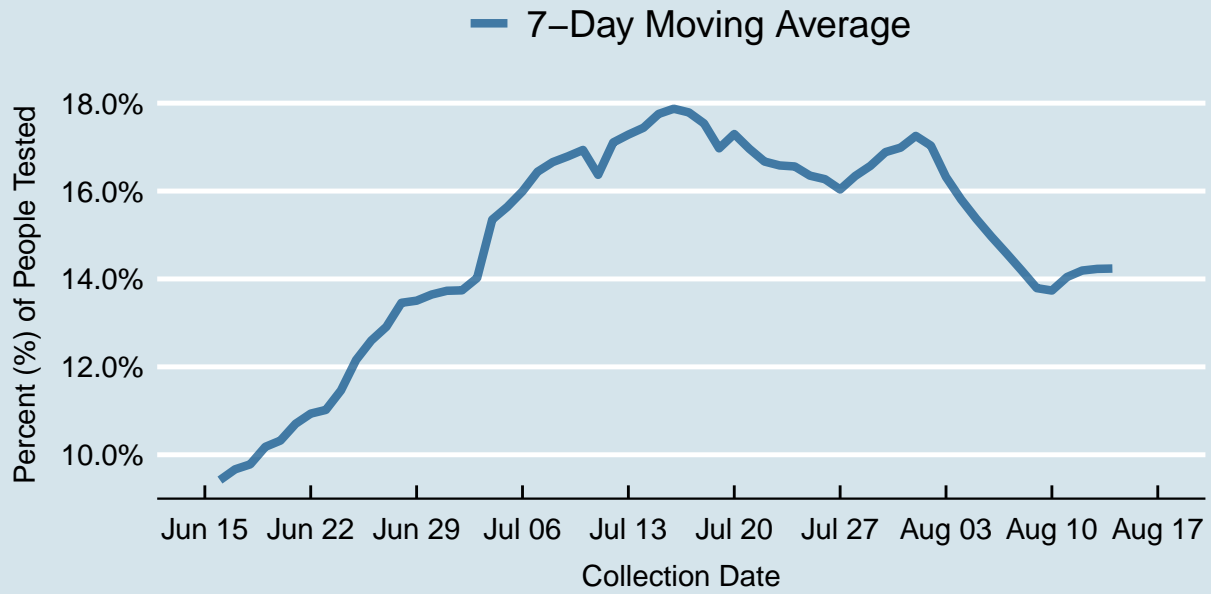


Table 4: 7-Day Average of Daily New Cases per 100K, by Age Group (Years)

Symptom Onset Date	0-4	5-17	18-24	25-49	50-64	65+
Aug 01	5.8	12.2	34.6	34.6	26.8	20.7
Aug 02	5.7	11.5	33.7	34.1	26.4	20.6
Aug 03	6.0	10.4	32.8	32.4	26.4	18.3
Aug 04	6.7	10.1	31.6	31.4	25.3	18.3
Aug 05	7.8	10.2	31.5	31.6	24.3	19.9
Aug 06	9.2	10.1	30.7	31.6	24.7	19.4
Aug 07	10.4	10.7	31.0	31.0	24.6	18.6
Aug 08	9.6	10.6	30.3	31.3	23.3	18.4
Aug 09	9.7	10.8	29.7	31.0	22.4	17.7
Aug 10	9.3	10.7	29.2	30.3	20.9	16.9
Aug 11	9.9	11.3	29.1	30.3	21.1	15.3
Aug 12	9.6	11.1	28.3	29.1	20.7	13.6
Aug 13	8.8	11.7	29.6	28.5	20.5	13.9
Aug 14	7.9	11.5	29.1	27.7	19.8	13.4

## Percent of People Receiving COVID-19 Viral Tests Who Have Positive Results

Clark County, NV





*Report prepared by: Kellie Watkins, PhD, MS, Ying Zhang, PhD, MPH (Office of Epidemiology and Disease Surveillance) and Lei Zhang, MS (Office of Informatics)*