

COVID-19 Trends, Clark County, NV

(FOR OFFICIAL USE ONLY)

Document creation date: January 31, 2024

Technical Notes:

- **General notes:** This report uses surveillance data collected by the Southern Nevada Health District. Due to delays related to laboratory processing, reporting, and case investigations, data from the most recent days are less complete than data from older time points. For this reason, as of June 10, 2020 this report will not display data from the previous three days prior to the date that the report was created. As many case investigations are ongoing, all data presented in this report are considered preliminary and subject to change. Data regarding cases, hospitalizations, deaths, and labs were last updated January 31, 2024 at 12:00 AM, and data is reported up through January 30, 2024.
- **Cases:** Symptom onset date was used for aggregating cases. If symptom onset date was missing, the following dates were substituted in this order: diagnosis date, lab collection date, report date (date case was reported to SNHD), event creation date (date case was entered into EpiTrax, SNHD's surveillance system).
- **Hospitalizations:** Admission date reported the the Nevada Hospital Association was used for aggregating hospitalizations. One person could have more than one admissions.
- **Hospital admission levels** were based on 7-day total of new COVID-19 hospital admissions per 100,000 population: high means greater than or equal to 20.0 per 100,000, medium means less than 20.0 but greater than or equal to 10.0 per 100,000, low means less than 10.0 per 100,000.
- **Deaths:** Date of death was used for aggregating deaths. If date of death was missing, report date was used.
- The population data source for calculating rate estimates was from Nevada State Demographer "2019 ASRHO Estimates and Projections Summary 2000 to 2038", 2020 projection, vintage 2019. Rates for individual age categories may be based on small numbers, which may give unstable estimates.

- The "Percent Change in Weekly Totals from Previous Week" graph and table display the percentage change in weekly totals of cases, hospitalizations, and deaths from the previous weekly totals. For the purpose of calculating weekly totals, weeks start on Monday and end on Sunday. A particular week will only be displayed in the report if data of every day in that week has been released. For example, if the report was created on June 10, 2020, the last day of reported data will be from Saturday June 6. Since data is only available for six of the seven days in that particular week, that week will not be included in the report.
- All graphs in this report show data from approximately 60 days prior to the date of the report.
- All tables show data from the last 14 days before the current date, with the exception of the "Percent Change in Weekly Totals from Previous Week", which displays data from the previous eight completed weeks.
- For the "Percent of People Receiving COVID-19 PCR Tests Who Have Positive Results" graph, one person who has multiple specimens collected in one day is only reported once. If any test of that person is positive, that person counts as a positive result. If all tests of that individual are negative, that person counts as a negative result. Laboratory tests were included if they were a test assessing for the presence of SARS-CoV-2 viral RNA, for example PCR tests. Antibody and antigen tests were excluded.
- For the "Percent of Total COVID-19 PCR Tests With Positive Results" graph, the numerator is the total number of positive tests, and the denominator is the total number of tests performed. Multiple tests are possible for each individual per day if more than one sample was collected. Laboratory tests were included if they were a test assessing for the presence of SARS-CoV-2 viral RNA, for example PCR tests. Antibody and antigen tests were excluded. Laboratory test results were included if they were reported electronically by laboratories or providers. Tests were excluded if entered by SNHD surveillance staff manually, as surveillance staff do not typically enter negative results, and this would bias the results of the graph in the positive direction.
- Syndromic Surveillance: Data source is the Electronic Surveillance System for the Early Notification of Community-based Epidemics (ESSENCE) Nevada. These data capture the Percent of emergency department visits that could presumptively be related to COVID-19 at non-federal acute care hospitals in Clark County. This includes visits where 1) the chief complaint of the patient was a symptom of coronavirus-like illness (i.e., fever and chills, cough, shortness of breath); or 2) a patient was diagnosed with symptoms of coronavirus-like illness; or 3) a patient was diagnosed with COVID-19. Visits among patients who were diagnosed with Influenza were excluded.

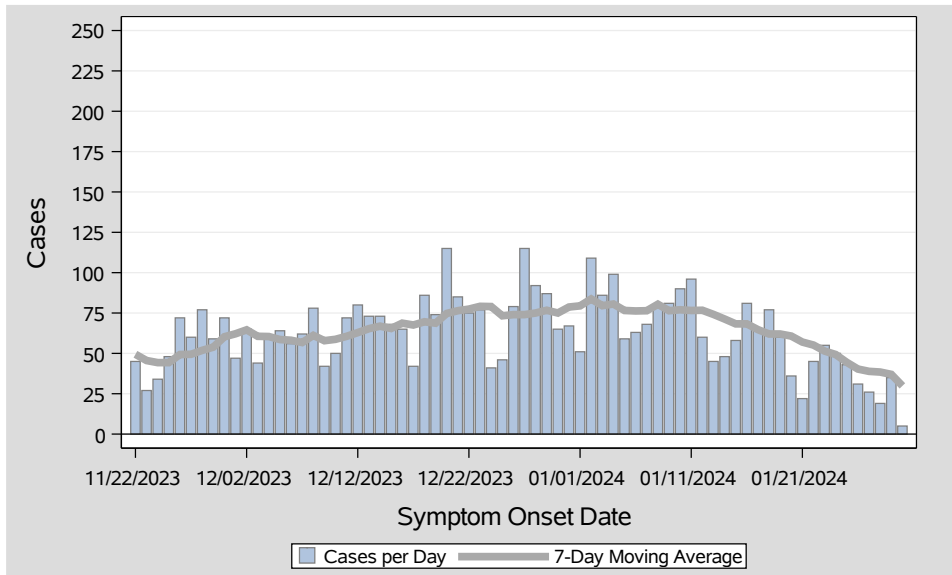


Table 1: COVID-19 Cases per Day, Clark County, NV

| Date | Cases Per Day | 7-Day Moving Average |
|--------|---------------|----------------------|
| Jan 14 | 48 | 71.3 |
| Jan 15 | 58 | 68.3 |
| Jan 16 | 81 | 68.3 |
| Jan 17 | 65 | 64.7 |
| Jan 18 | 77 | 62.0 |
| Jan 19 | 60 | 62.0 |
| Jan 20 | 36 | 60.7 |
| Jan 21 | 22 | 57.0 |
| Jan 22 | 45 | 55.1 |
| Jan 23 | 55 | 51.4 |
| Jan 24 | 50 | 49.3 |
| Jan 25 | 43 | 44.4 |
| Jan 26 | 31 | 40.3 |
| Jan 27 | 26 | 38.9 |
| Jan 28 | 19 | 38.4 |
| Jan 29 | 35 | 37.0 |
| Jan 30 | 5 | 29.9 |

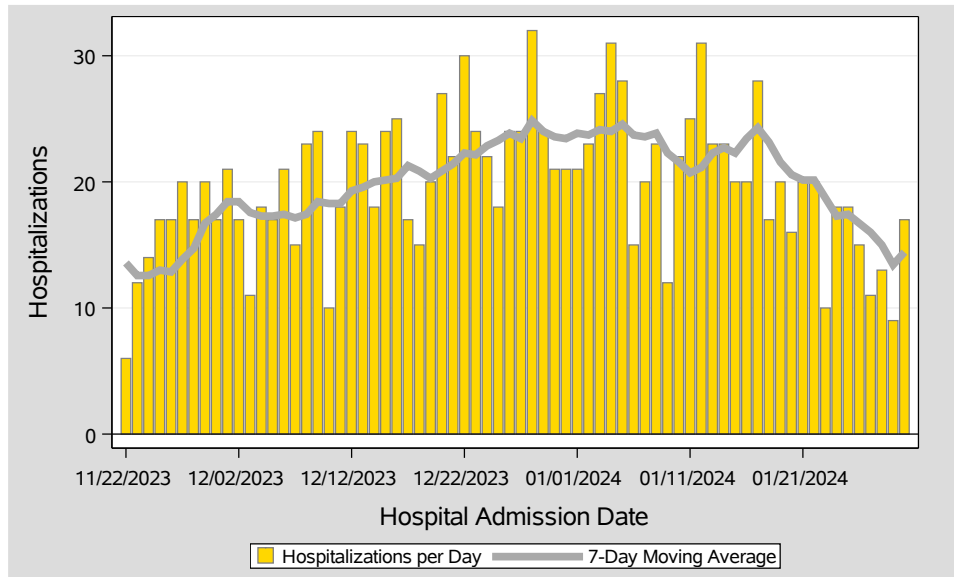


Table 2: COVID-19 Hospitalizations per Day, Clark County, NV

| Date | Hospitalizations Per Day | 7-Day Moving Average | 7-Day Total Hospitalizations per 100K | Hospital Admission Level |
|--------|--------------------------|----------------------|---------------------------------------|--------------------------|
| Jan 14 | 23 | 22.7 | 6.86 | Low |
| Jan 15 | 20 | 22.3 | 6.73 | Low |
| Jan 16 | 20 | 23.4 | 7.07 | Low |
| Jan 17 | 28 | 24.3 | 7.33 | Low |
| Jan 18 | 17 | 23.1 | 6.99 | Low |
| Jan 19 | 20 | 21.6 | 6.51 | Low |
| Jan 20 | 16 | 20.6 | 6.21 | Low |
| Jan 21 | 20 | 20.1 | 6.08 | Low |
| Jan 22 | 20 | 20.1 | 6.08 | Low |
| Jan 23 | 10 | 18.7 | 5.65 | Low |
| Jan 24 | 18 | 17.3 | 5.22 | Low |
| Jan 25 | 18 | 17.4 | 5.26 | Low |
| Jan 26 | 15 | 16.7 | 5.05 | Low |
| Jan 27 | 11 | 16.0 | 4.83 | Low |
| Jan 28 | 13 | 15.0 | 4.53 | Low |
| Jan 29 | 9 | 13.4 | 4.05 | Low |
| Jan 30 | 17 | 14.4 | 4.36 | Low |

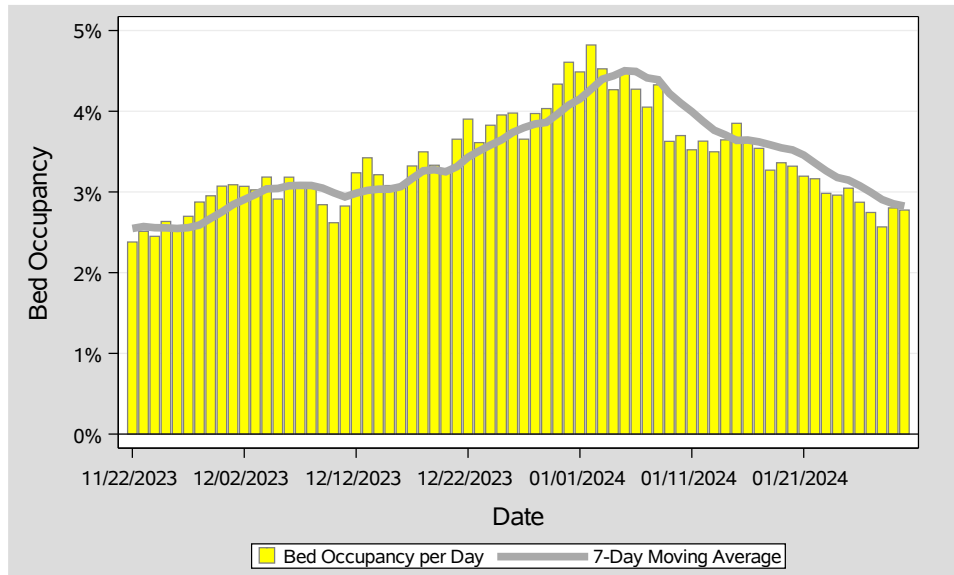


Table 3: Percent of Bed Occupancy per Day, Clark County, NV

| Date | Bed Occupancy Per Day | 7-Day Moving Average |
|--------|-----------------------|----------------------|
| Jan 14 | 3.65% | 3.71% |
| Jan 15 | 3.85% | 3.64% |
| Jan 16 | 3.66% | 3.64% |
| Jan 17 | 3.54% | 3.62% |
| Jan 18 | 3.27% | 3.58% |
| Jan 19 | 3.36% | 3.55% |
| Jan 20 | 3.32% | 3.52% |
| Jan 21 | 3.20% | 3.46% |
| Jan 22 | 3.16% | 3.36% |
| Jan 23 | 2.98% | 3.26% |
| Jan 24 | 2.96% | 3.18% |
| Jan 25 | 3.05% | 3.15% |
| Jan 26 | 2.87% | 3.08% |
| Jan 27 | 2.75% | 3.00% |
| Jan 28 | 2.57% | 2.91% |
| Jan 29 | 2.80% | 2.85% |
| Jan 30 | 2.78% | 2.82% |

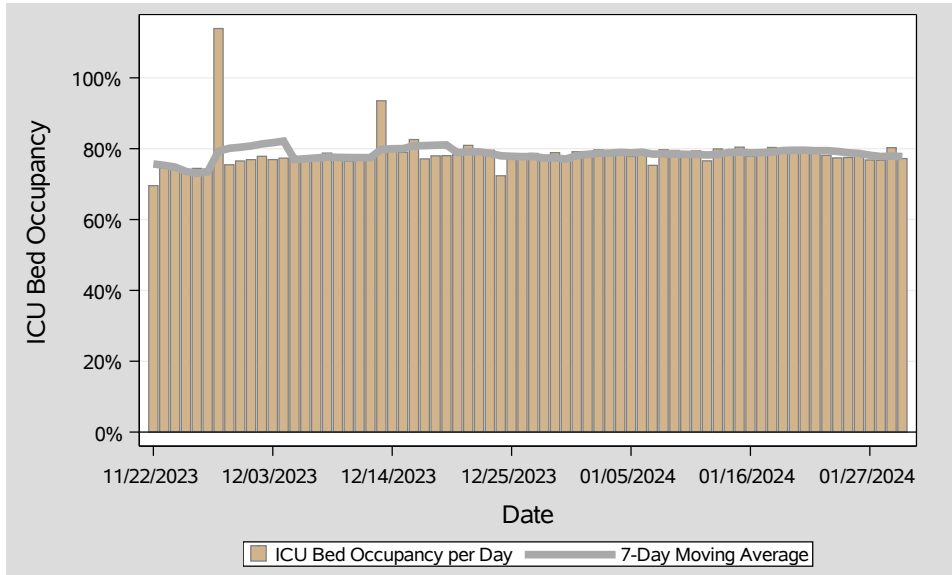


Table 4: Percent of ICU Bed Occupancy per Day, Clark County, NV

| Date | ICU Bed Occupancy Per Day | 7-Day Moving Average |
|--------|---------------------------|----------------------|
| Jan 14 | 79.23% | 78.94% |
| Jan 15 | 80.44% | 79.04% |
| Jan 16 | 77.89% | 78.82% |
| Jan 17 | 78.92% | 78.90% |
| Jan 18 | 80.34% | 79.04% |
| Jan 19 | 79.73% | 79.50% |
| Jan 20 | 80.32% | 79.55% |
| Jan 21 | 79.39% | 79.57% |
| Jan 22 | 79.41% | 79.43% |
| Jan 23 | 78.12% | 79.46% |
| Jan 24 | 77.40% | 79.24% |
| Jan 25 | 77.51% | 78.84% |
| Jan 26 | 78.49% | 78.66% |
| Jan 27 | 76.81% | 78.16% |
| Jan 28 | 76.72% | 77.78% |
| Jan 29 | 80.29% | 77.91% |
| Jan 30 | 77.22% | 77.78% |

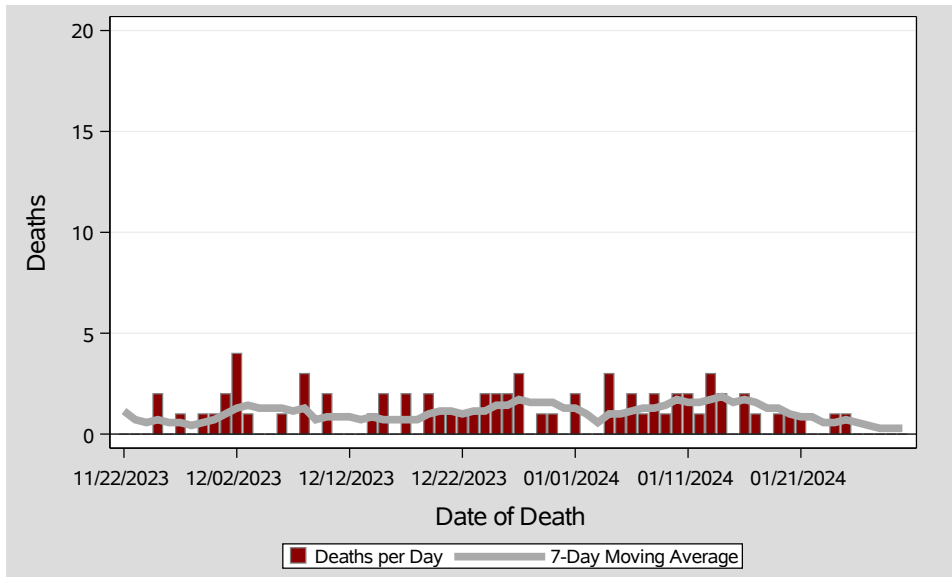


Table 5: COVID-19 Deaths per Day, Clark County, NV

| Date | Deaths Per Day | 7-Day Moving Average |
|--------|----------------|----------------------|
| Jan 14 | 2 | 1.9 |
| Jan 15 | 0 | 1.6 |
| Jan 16 | 2 | 1.7 |
| Jan 17 | 1 | 1.6 |
| Jan 18 | 0 | 1.3 |
| Jan 19 | 1 | 1.3 |
| Jan 20 | 1 | 1.0 |
| Jan 21 | 1 | 0.9 |
| Jan 22 | 0 | 0.9 |
| Jan 23 | 0 | 0.6 |
| Jan 24 | 1 | 0.6 |
| Jan 25 | 1 | 0.7 |
| Jan 26 | 0 | 0.6 |
| Jan 27 | 0 | 0.4 |
| Jan 28 | 0 | 0.3 |
| Jan 29 | 0 | 0.3 |
| Jan 30 | 0 | 0.3 |

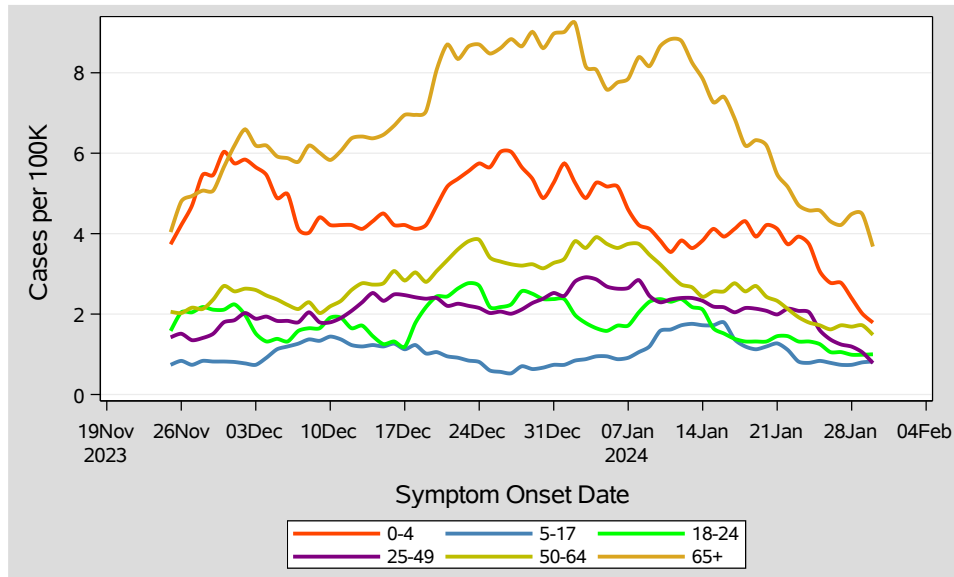


Table 6: 7-Day Average of Daily New Cases per 100K, by Age Group (Years)

| Date | 0-4 | 5-17 | 18-24 | 25-49 | 50-64 | 65+ |
|--------|-----|------|-------|-------|-------|-----|
| Jan 14 | 3.8 | 1.7 | 2.1 | 2.3 | 2.4 | 7.9 |
| Jan 15 | 4.1 | 1.7 | 1.6 | 2.2 | 2.6 | 7.3 |
| Jan 16 | 3.9 | 1.8 | 1.5 | 2.2 | 2.6 | 7.4 |
| Jan 17 | 4.1 | 1.4 | 1.4 | 2.0 | 2.8 | 6.9 |
| Jan 18 | 4.3 | 1.2 | 1.3 | 2.2 | 2.6 | 6.2 |
| Jan 19 | 3.9 | 1.1 | 1.3 | 2.1 | 2.7 | 6.3 |
| Jan 20 | 4.2 | 1.2 | 1.3 | 2.1 | 2.4 | 6.2 |
| Jan 21 | 4.1 | 1.3 | 1.4 | 2.0 | 2.3 | 5.5 |
| Jan 22 | 3.7 | 1.1 | 1.4 | 2.1 | 2.1 | 5.2 |
| Jan 23 | 3.9 | 0.8 | 1.3 | 2.1 | 1.9 | 4.7 |
| Jan 24 | 3.7 | 0.8 | 1.3 | 2.0 | 1.8 | 4.6 |
| Jan 25 | 3.1 | 0.8 | 1.3 | 1.6 | 1.7 | 4.6 |
| Jan 26 | 2.8 | 0.8 | 1.1 | 1.4 | 1.6 | 4.3 |
| Jan 27 | 2.8 | 0.7 | 1.1 | 1.2 | 1.7 | 4.2 |
| Jan 28 | 2.4 | 0.7 | 1.0 | 1.2 | 1.7 | 4.5 |
| Jan 29 | 2.0 | 0.8 | 1.0 | 1.0 | 1.7 | 4.5 |
| Jan 30 | 1.8 | 0.8 | 1.0 | 0.8 | 1.5 | 3.7 |

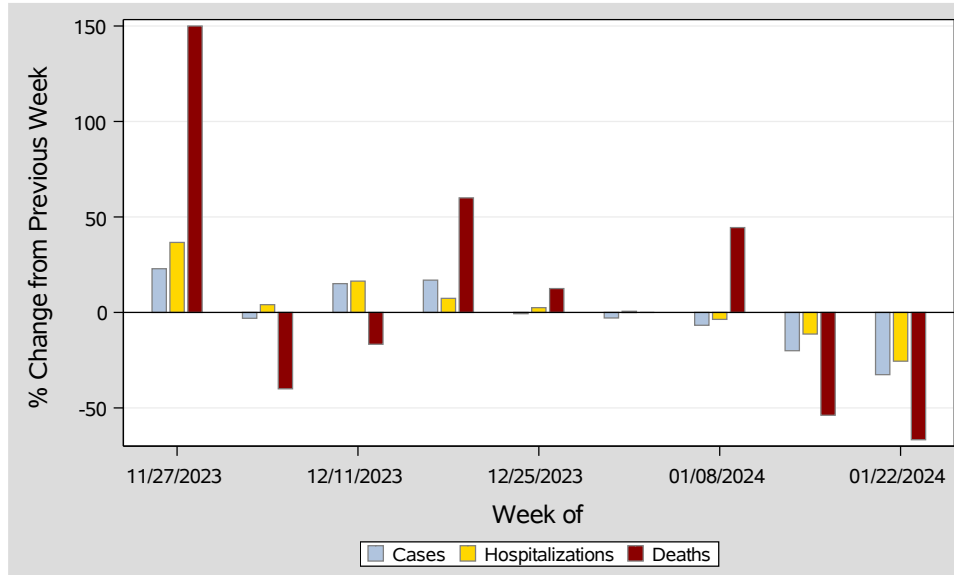


Table 7: Percent Change in Weekly Totals from Previous Week

| Week | Case(n) | Cases(%) | Hosp(n) | Hosp(%) | Deaths(n) | Deaths(%) |
|-----------------|---------|----------|---------|---------|-----------|-----------|
| Nov 27 - Dec 03 | 424 | 22.9 | 123 | 36.7 | 10 | 150.0 |
| Dec 04 - Dec 10 | 411 | -3.1 | 128 | 4.1 | 6 | -40.0 |
| Dec 11 - Dec 17 | 473 | 15.1 | 149 | 16.4 | 5 | -16.7 |
| Dec 18 - Dec 24 | 553 | 16.9 | 160 | 7.4 | 8 | 60.0 |
| Dec 25 - Dec 31 | 551 | -0.4 | 164 | 2.5 | 9 | 12.5 |
| Jan 01 - Jan 07 | 535 | -2.9 | 165 | 0.6 | 9 | 0.0 |
| Jan 08 - Jan 14 | 499 | -6.7 | 159 | -3.6 | 13 | 44.4 |
| Jan 15 - Jan 21 | 399 | -20.0 | 141 | -11.3 | 6 | -53.8 |
| Jan 22 - Jan 28 | 269 | -32.6 | 105 | -25.5 | 2 | -66.7 |

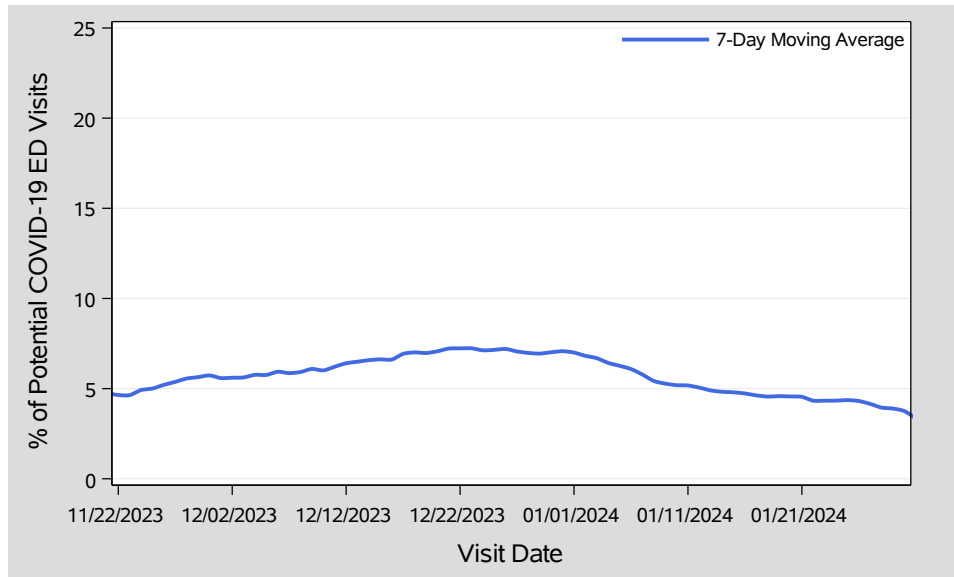


Table 8: Syndromic Surveillance: Percent of ED Visits Potentially Related to COVID-19

| Visit Date | Possible COVID Visits | Total ED Visits | (%) | 7-Day Average (%) |
|------------|-----------------------|-----------------|-----|-------------------|
| Jan 14 | 148 | 2,872 | 5.2 | 4.8 |
| Jan 15 | 160 | 3,145 | 5.1 | 4.8 |
| Jan 16 | 149 | 3,454 | 4.3 | 4.7 |
| Jan 17 | 136 | 3,239 | 4.2 | 4.6 |
| Jan 18 | 126 | 3,149 | 4.0 | 4.6 |
| Jan 19 | 145 | 3,300 | 4.4 | 4.6 |
| Jan 20 | 142 | 2,952 | 4.8 | 4.6 |
| Jan 21 | 143 | 2,858 | 5.0 | 4.5 |
| Jan 22 | 121 | 3,366 | 3.6 | 4.3 |
| Jan 23 | 147 | 3,414 | 4.3 | 4.3 |
| Jan 24 | 142 | 3,356 | 4.2 | 4.3 |
| Jan 25 | 138 | 3,282 | 4.2 | 4.4 |
| Jan 26 | 128 | 3,172 | 4.0 | 4.3 |
| Jan 27 | 108 | 2,924 | 3.7 | 4.2 |
| Jan 28 | 101 | 2,839 | 3.6 | 3.9 |
| Jan 29 | 109 | 3,382 | 3.2 | 3.9 |
| Jan 30 | 77 | 2,318 | 3.3 | 3.8 |

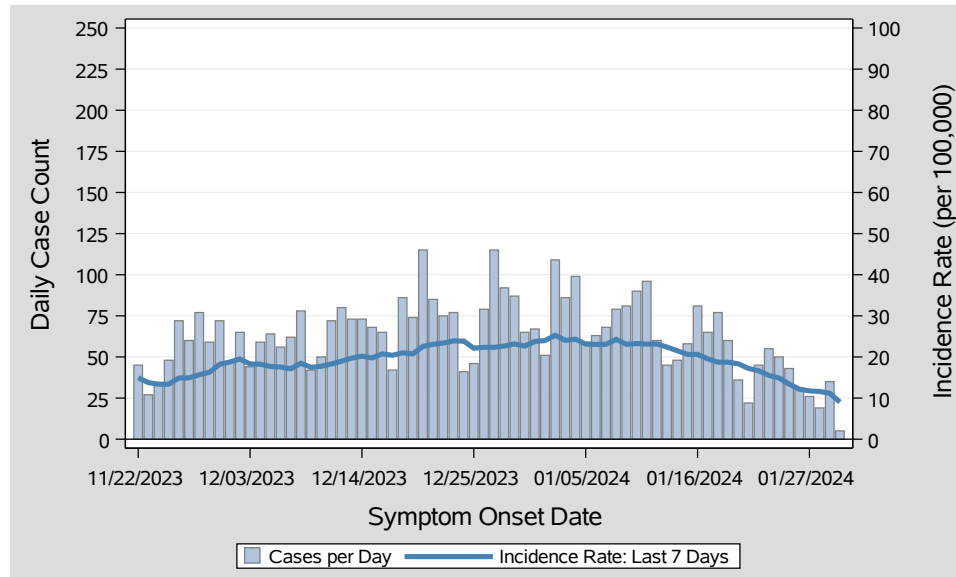


Table 9: COVID-19 Cases per Day and Incidence Rate in the Last 7 Days, Clark County, NV

| Onset Date | Cases Per Day | Last 7 Days | |
|------------|---------------|------------------|----------------|
| | | Total Case Count | Incidence Rate |
| Jan 14 | 48 | 499 | 21.5 |
| Jan 15 | 58 | 478 | 20.6 |
| Jan 16 | 81 | 478 | 20.6 |
| Jan 17 | 65 | 453 | 19.5 |
| Jan 18 | 77 | 434 | 18.7 |
| Jan 19 | 60 | 434 | 18.7 |
| Jan 20 | 36 | 425 | 18.3 |
| Jan 21 | 22 | 399 | 17.2 |
| Jan 22 | 45 | 386 | 16.7 |
| Jan 23 | 55 | 360 | 15.5 |
| Jan 24 | 50 | 345 | 14.9 |
| Jan 25 | 43 | 311 | 13.4 |
| Jan 26 | 31 | 282 | 12.2 |
| Jan 27 | 26 | 272 | 11.7 |
| Jan 28 | 19 | 269 | 11.6 |
| Jan 29 | 35 | 259 | 11.2 |
| Jan 30 | 5 | 209 | 9.0 |

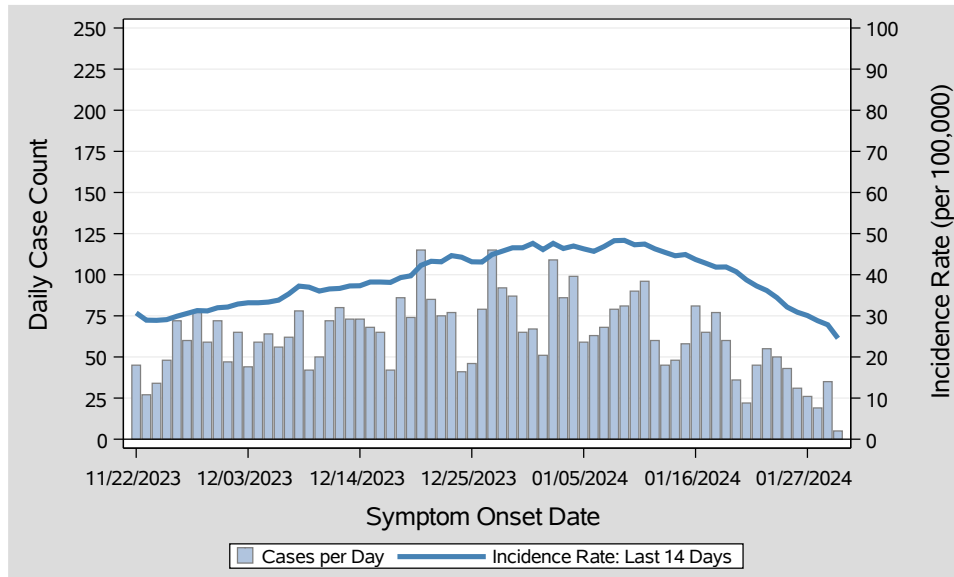


Table 10: COVID-19 Cases per Day and Incidence Rate in the Last 14 Days, Clark County, NV

| Onset Date | Cases Per Day | Last 14 Days | |
|------------|---------------|------------------|----------------|
| | | Total Case Count | Incidence Rate |
| Jan 14 | 48 | 1,034 | 44.6 |
| Jan 15 | 58 | 1,041 | 44.9 |
| Jan 16 | 81 | 1,013 | 43.7 |
| Jan 17 | 65 | 992 | 42.8 |
| Jan 18 | 77 | 970 | 41.8 |
| Jan 19 | 60 | 971 | 41.9 |
| Jan 20 | 36 | 944 | 40.7 |
| Jan 21 | 22 | 898 | 38.7 |
| Jan 22 | 45 | 864 | 37.3 |
| Jan 23 | 55 | 838 | 36.1 |
| Jan 24 | 50 | 798 | 34.4 |
| Jan 25 | 43 | 745 | 32.1 |
| Jan 26 | 31 | 716 | 30.9 |
| Jan 27 | 26 | 697 | 30.1 |
| Jan 28 | 19 | 668 | 28.8 |
| Jan 29 | 35 | 645 | 27.8 |
| Jan 30 | 5 | 569 | 24.5 |